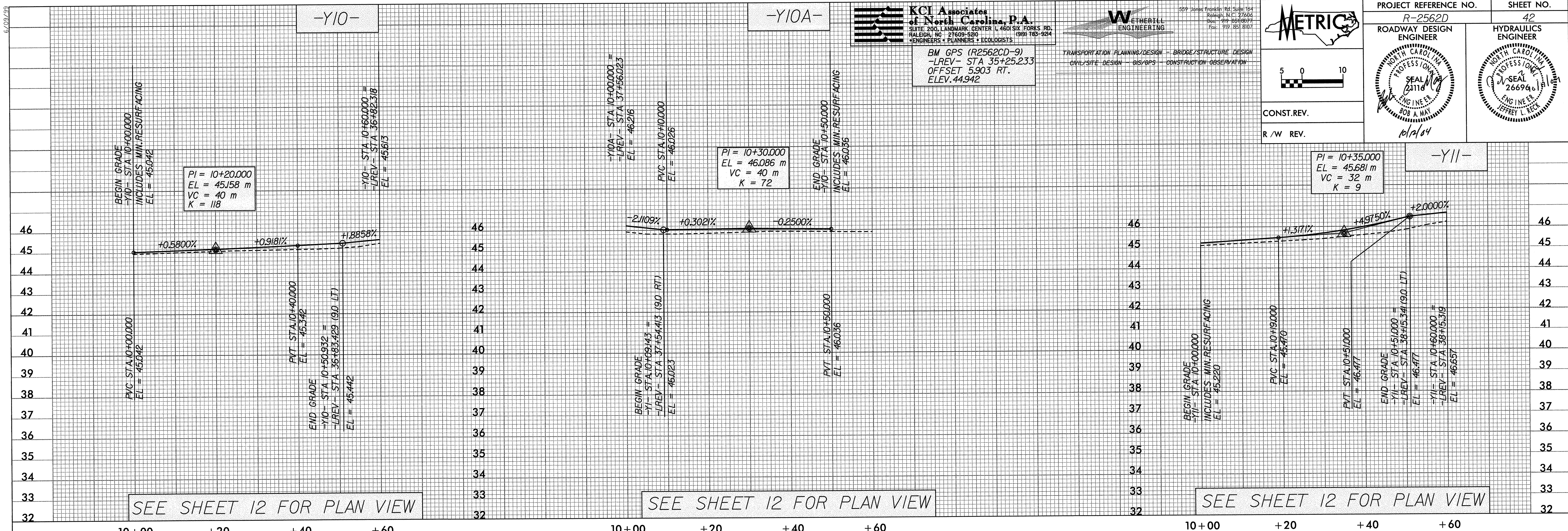


6/23/04

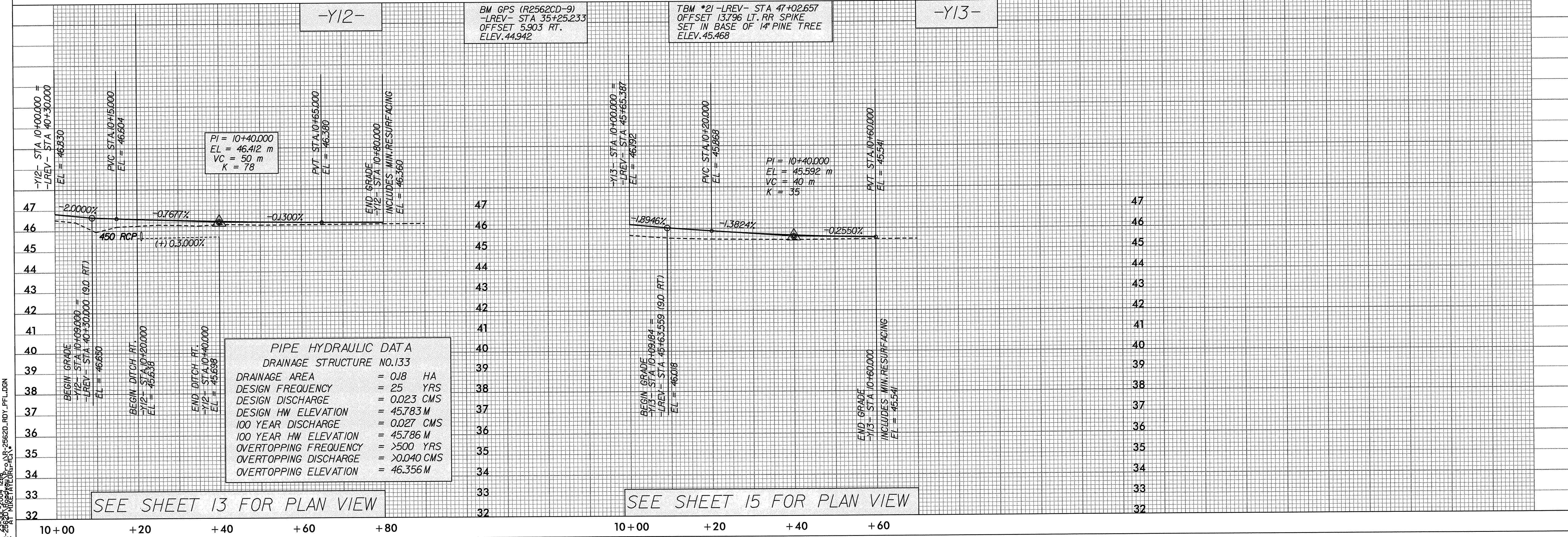
MT 01/01/04



SEE SHEET 12 FOR PLAN VIEW

SEE SHEET 12 FOR PLAN VIEW

SEE SHEET 12 FOR PLAN VIEW



SEE SHEET 13 FOR PLAN VIEW

SEE SHEET 15 FOR PLAN VIEW

PIPE HYDRAULIC DATA	
DRAINAGE STRUCTURE NO.133	
DRAINAGE AREA	= 0.18 HA
DESIGN FREQUENCY	= 25 YRS
DESIGN DISCHARGE	= 0.023 CMS
DESIGN HW ELEVATION	= 45.783 M
100 YEAR DISCHARGE	= 0.027 CMS
100 YEAR HW ELEVATION	= 45.786 M
OVERTOPPING FREQUENCY	= >500 YRS
OVERTOPPING DISCHARGE	= >0.040 CMS
OVERTOPPING ELEVATION	= 46.356 M

KCI Associates
of North Carolina, P.A.
SUITE 200, LANDMARK CENTER I, 460 SIX FORKS RD.
RALEIGH, NC 27609-5200 (919) 783-9244
FAX: 919 783 8107
ENGINEERS • PLANNERS • ECOLOGISTS

BM GPS (R2562CD-9)
-LREV- STA 35+25.233
OFFSET 5.903 RT.
ELEV. 44.942

WETHERILL ENGINEERING
559 Jordan Franklin Rd. Suite 164
Raleigh, NC 27606
Tel: 919-851-8977
Fax: 919-851-8107

TRANSPORTATION PLANNING/DESIGN - BRIDGE/STRUCTURE DESIGN
ON-LY/SITE DESIGN - GIS/GIS - CONSTRUCTION OBSERVATION

METRIC

CONST. REV.
R/W REV.

PROJECT REFERENCE NO. **R-2562D**
ROADWAY DESIGN ENGINEER

SEAL 26111
ENGINEER
BOB A. MAI
10/1/04

HYDRAULICS ENGINEER
SEAL 266946
ENGINEER
JEFFREY L. REED