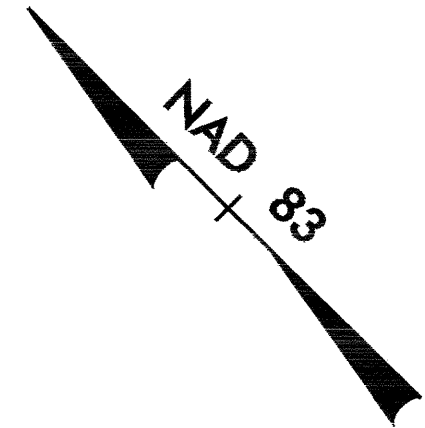


DATUM DESCRIPTION

THE LOCALIZED COORDINATE SYSTEM DEVELOPED FOR THIS PROJECT IS BASED ON THE STATE PLANE COORDINATES ESTABLISHED BY NCGS FOR MONUMENT "CECIL" WITH NAD 83 STATE PLANE GRID COORDINATES OF NORTHING: 102527.1910(M) EASTING: 635512.5230(M) THE AVERAGE COMBINED GRID FACTOR USED ON THIS PROJECT (GROUND TO GRID IS: 999920685) THE N.C.LAMBERT GRID BEARING LOCALIZED HORIZONTAL GROUND DISTANCE FROM "CECIL TO -LREV- STATION 10+53.018 IS S 44 18 54.13 E 558.5845m ALL LINEAR DIMENSIONS ARE LOCALIZED HORIZONTAL DISTANCES VERTICAL DATUM USED IS NGVD 29

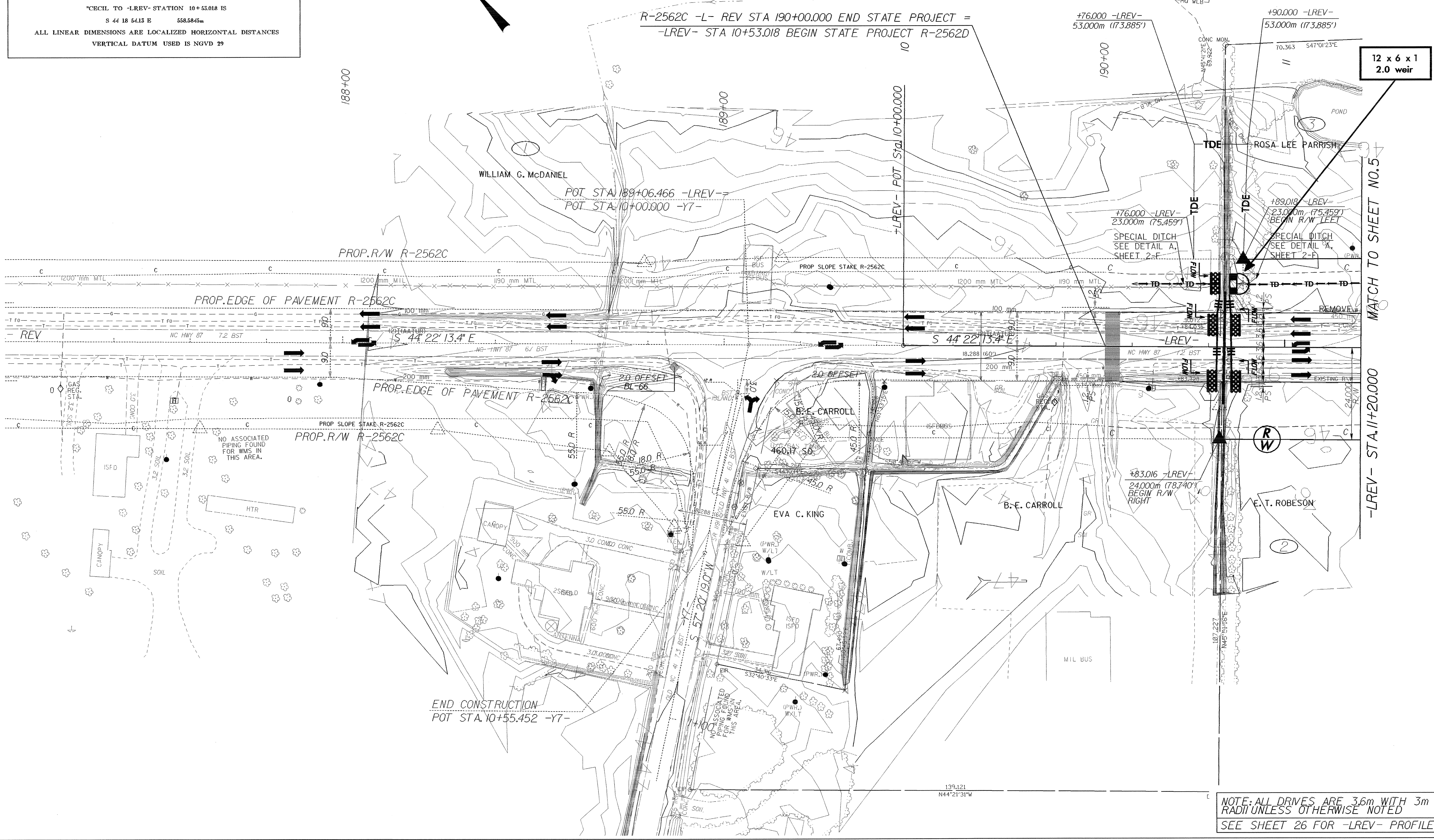
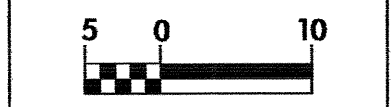


CLEARING AND GRUBBING EROSION CONTROL FOR CONSTRUCTION SHEET 4



PROJECT REFERENCE NO. R-2562D	SHEET NO. EC-3/CONST.4
R/W SHEET NO.	
ROADWAY DESIGN ENGINEER	HYDRAULICS ENGINEER
CONST.REV.	
R/W REV.	

NOTE:
PLACE TEMPORARY ROCK SEDIMENT DAMS TYPE-B AND TEMPORARY ROCK SILT CHECKS TYPE-A AT DRAINAGE OUTLETS.



12 x 6 x 1
2.0 weir

MATCH TO SHEET NO. 5

-LREV- STA. 10+20.000

NOTE: ALL DRIVES ARE 3.6m WITH 3m RADIUS UNLESS OTHERWISE NOTED SEE SHEET 26 FOR -LREV- PROFILE