

CLEARING AND GRUBBING  
EROSION CONTROL FOR  
CONSTRUCTION SHEET 13

NOTE:  
PLACE TEMPORARY ROCK SEDIMENT DAMS TYPE-B  
AND TEMPORARY ROCK SILT CHECKS TYPE-A AT  
DRAINAGE OUTLETS.

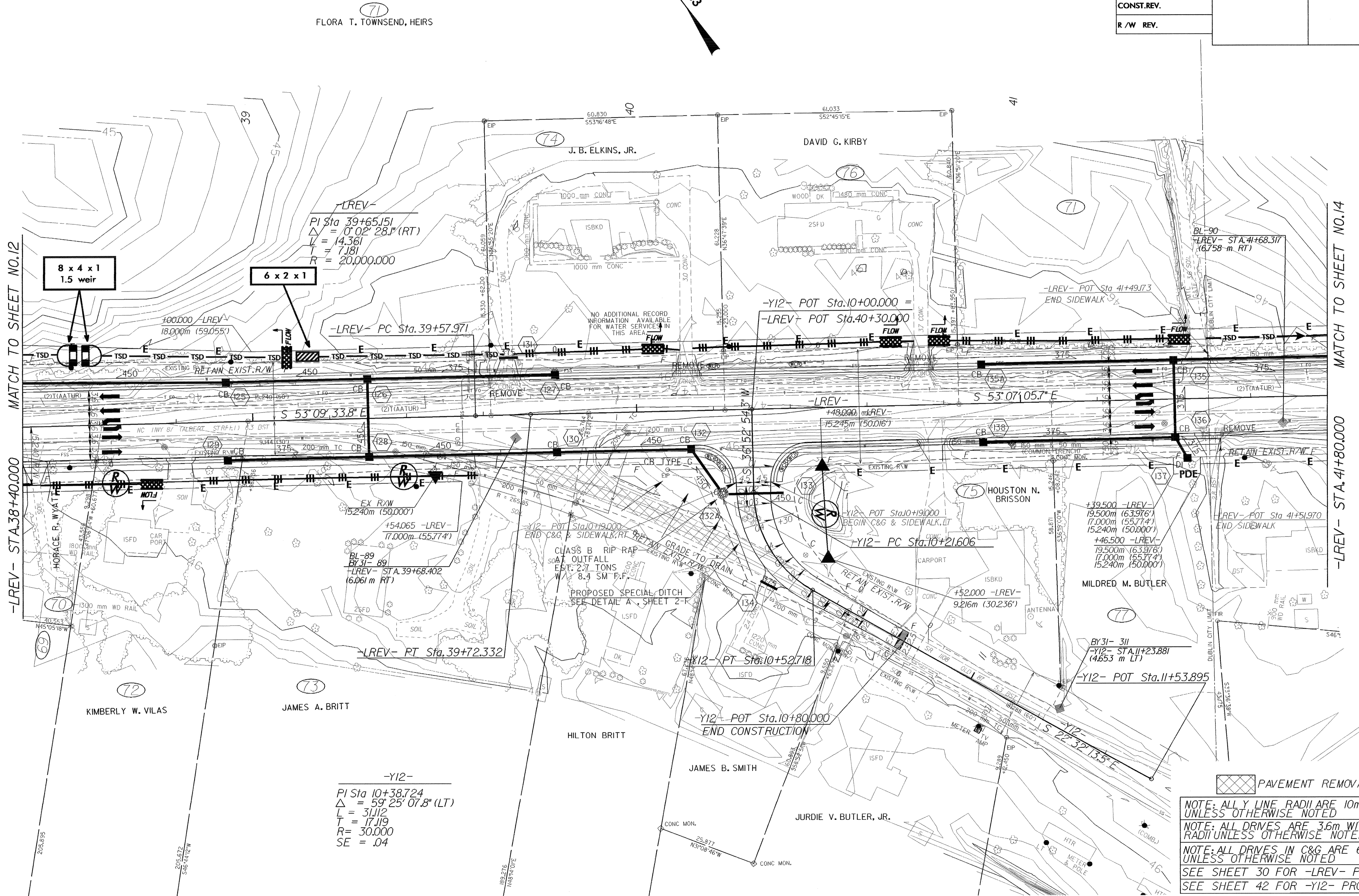
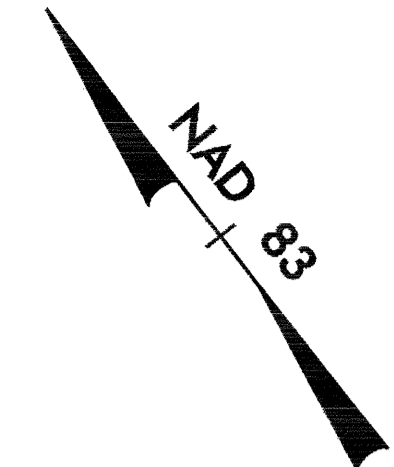
**METRIC**

5 0 10

CONST. REV.

R/W REV.

PROJECT REFERENCE NO. R-2562D	SHEET NO. EC-13/CONST.13
R/W SHEET NO.	
ROADWAY DESIGN ENGINEER	HYDRAULICS ENGINEER



-LREV- STA.38+40.000

MATCH TO SHEET NO.14

-LREV- STA.41+80.000

71  
FLORA T. TOWNSEND, HEIRS

74  
J. B. ELKINS, JR.

76  
DAVID G. KIRBY

71

8 x 4 x 1  
1.5 weir

6 x 2 x 1

-LREV-  
PI Sta 39+65.151  
 $\Delta = 0^{\circ}02'28.1''$  (RT)  
L = 14.361  
T = 7.181  
R = 20,000.000

-LREV- PC Sta. 39+57.971

-Y12- POT Sta.10+00.000 =  
-LREV- POT Sta.40+30.000

-LREV- POT Sta.41+49.173  
END SIDEWALK

BL-90  
-LREV- STA.41+68.317  
(6.758 m RT)

NO ADDITIONAL RECORD  
INFORMATION AVAILABLE  
FOR WATER SERVICE IN  
THIS AREA.

-LREV-  
+48.000  
-15.245m (50.016')

S 53°09'33.8" E

S 53°07'05.7" E

+54.065 -LREV-  
17.000m (55.774')

-Y12- POT Sta.10+9.000  
END C&G & SIDEWALK, RT

-Y12- PC Sta.10+21.606

+39.500 -LREV-  
19.500m (63.976')  
17.000m (55.774')  
15.240m (50.000')

-LREV- POT Sta.41+51.970  
END SIDEWALK

-LREV- PT Sta.39+72.332

PROPOSED SPECIAL DITCH  
SEE DETAIL A, SHEET 2-F

+52.000 -LREV-  
9.216m (30.236')

BY 31- 311  
-Y12- STA.11+23.881  
(4.653 m LT)

-Y12- POT Sta.11+53.895

72  
KIMBERLY W. VILAS

73  
JAMES A. BRITT

HILTON BRITT

JAMES B. SMITH

JURDIE V. BUTLER, JR.

-Y12-  
PI Sta 10+38.724  
 $\Delta = 59^{\circ}25'07.8''$  (LT)  
L = 31.112  
T = 17.119  
R = 30.000  
SE = .04

PAVEMENT REMOVAL

NOTE: ALL Y LINE RADII ARE 10m  
UNLESS OTHERWISE NOTED  
NOTE: ALL DRIVES ARE 3.6m WITH 3m  
RADII UNLESS OTHERWISE NOTED  
NOTE: ALL DRIVES IN C&G ARE 6m  
UNLESS OTHERWISE NOTED  
SEE SHEET 30 FOR -LREV- PROFILE  
SEE SHEET 42 FOR -Y12- PROFILE