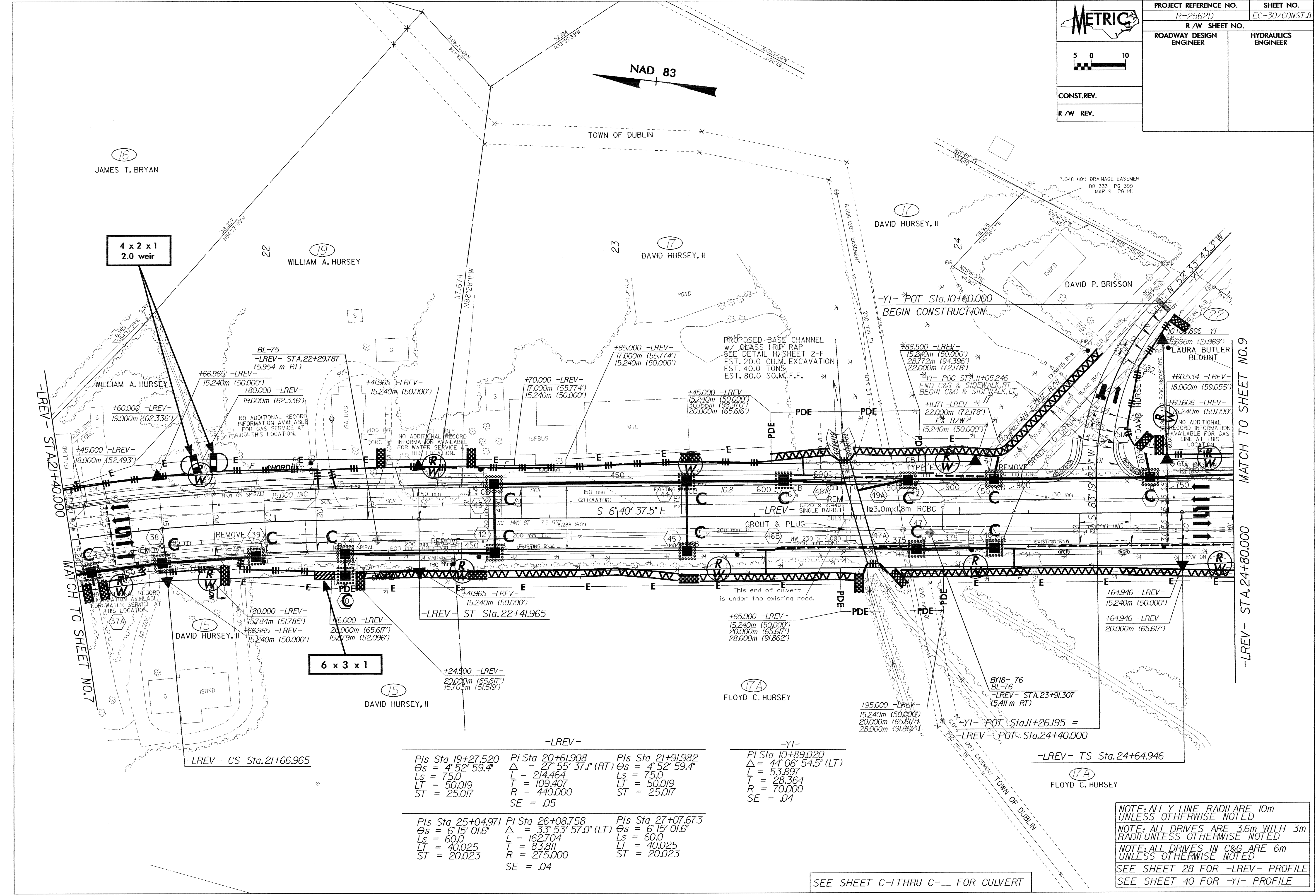


5 0 10

CONST. REV.

R / W REV.

PROJECT REFERENCE NO.	R-2562D	SHEET NO.	EC-30/CONST.B
R / W SHEET NO.			
ROADWAY DESIGN ENGINEER		HYDRAULICS ENGINEER	



-LREV-			-YI-		
PIs Sta 19+27.520	PI Sta 20+61.908	PIs Sta 21+91.982	PI Sta 10+89.020		
$\Delta s = 4' 52'' 59.4''$	$\Delta = 27' 55'' 37.1''$ (RT)	$\Delta s = 4' 52'' 59.4''$	$\Delta = 44' 06'' 54.5''$ (LT)		
$L_s = 75.0$	$L = 214.464$	$L_s = 75.0$	$L = 53.897$		
$LT = 50.019$	$T = 109.407$	$LT = 50.019$	$T = 28.364$		
$ST = 25.017$	$R = 440.000$	$ST = 25.017$	$R = 70.000$		
	$SE = .05$		$SE = .04$		

PIs Sta 25+04.971	PI Sta 26+08.758	PIs Sta 27+07.673
$\Delta s = 6' 15'' 01.6''$	$\Delta = 33' 53'' 57.0''$ (LT)	$\Delta s = 6' 15'' 01.6''$
$L_s = 60.0$	$L = 162.704$	$L_s = 60.0$
$LT = 40.025$	$T = 83.811$	$LT = 40.025$
$ST = 20.023$	$R = 275.000$	$ST = 20.023$
	$SE = .04$	

SEE SHEET C-I THRU C-- FOR CULVERT

NOTE: ALL Y LINE RADII ARE 10m UNLESS OTHERWISE NOTED

NOTE: ALL DRIVES ARE 3.6m WITH 3m RADII UNLESS OTHERWISE NOTED

NOTE: ALL DRIVES IN C&G ARE 6m UNLESS OTHERWISE NOTED

SEE SHEET 28 FOR -LREV- PROFILE

SEE SHEET 40 FOR -YI- PROFILE

MATCH TO SHEET NO. 9

-LREV- STA. 24+80.000