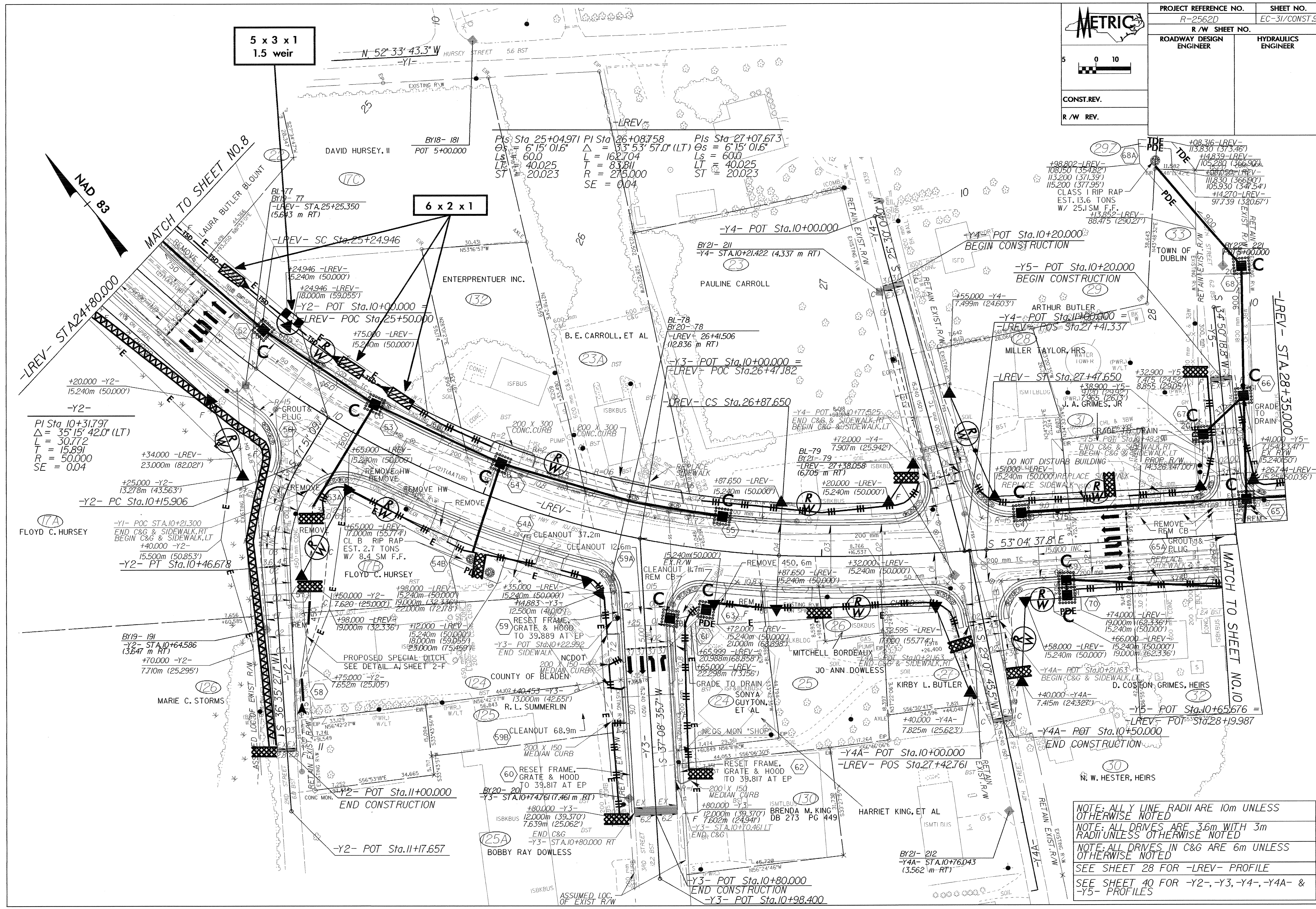
	PROJECT REFERENCE NO.	R-2562D	SHEET NO.	EC-31/CONST.9
	R/W SHEET NO.			
ROADWAY DESIGN ENGINEER			HYDRAULICS ENGINEER	
CONST.REV.				
R/W REV.				



$\Delta = 35^\circ 15' 42.0''$  (LT)  
 $L = 30.772$   
 $T = 15.891$   
 $R = 50.000$   
 $SE = 0.04$

$\Delta = 35^\circ 15' 42.0''$  (LT)  
 $L = 30.772$   
 $T = 15.891$   
 $R = 50.000$   
 $SE = 0.04$

NOTE: ALL Y LINE RADII ARE 10m UNLESS OTHERWISE NOTED  
 NOTE: ALL DRIVES ARE 3.6m WITH 3m RADII UNLESS OTHERWISE NOTED  
 NOTE: ALL DRIVES IN C&G ARE 6m UNLESS OTHERWISE NOTED  
 SEE SHEET 28 FOR -LREV- PROFILE  
 SEE SHEET 40 FOR -Y2-, -Y3-, -Y4-, -Y4A- & -Y5- PROFILES