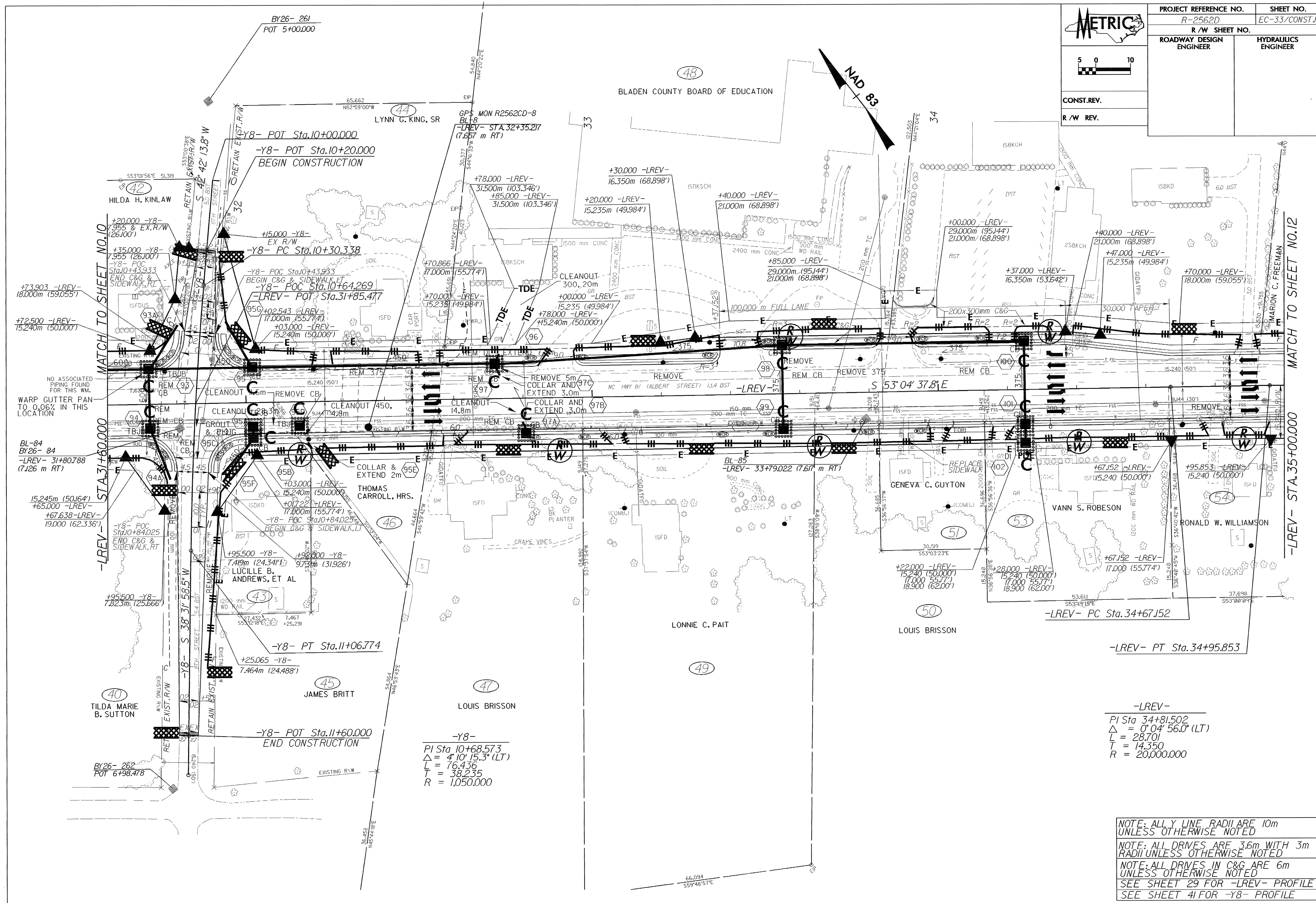
 5 0 10	PROJECT REFERENCE NO.	R-2562D	SHEET NO.	EC-33/CONST.11
	R/W SHEET NO.			
CONST. REV.	ROADWAY DESIGN ENGINEER	HYDRAULICS ENGINEER		
R/W REV.				



NO ASSOCIATED PIPING FOUND FOR THIS WM.
WARP GUTTER PAN TO 0.06% IN THIS LOCATION

BL-84
BY26-84
-LREV- 31+80788
(7126 m RT)

15.245m (50J64')
+65.000 -LREV-
+67.638 -LREV-
19.000 (62.336')

+95.500 -Y8-
7.823m (25.666')

40
TILDA MARIE B. SUTTON

BY26-262
POT 6+98.478

-Y8- PT Sta.11+06.774
+25.065 -Y8-
7.464m (24.488')

45
JAMES BRITT

-Y8- POT Sta.11+60.000
END CONSTRUCTION

-Y8-
PI Sta. 10+68.573
Δ = 4' 10" 15.3" (LT)
L = 76.436
T = 38.235
R = 1,050.000

47
LOUIS BRISSON

49
LONNIE C. PAIT

50
LOUIS BRISSON

51
GENEVA C. GUYTON

53
VANN S. ROBESON

54
RONALD W. WILLIAMSON

-LREV- PT Sta.34+95.853

-LREV-
PI Sta 34+81.502
Δ = 0' 04' 56.0" (LT)
L = 28.701
T = 14.350
R = 20,000.000

NOTE: ALL Y LINE RADII ARE 10m UNLESS OTHERWISE NOTED
NOTE: ALL DRIVES ARE 3.6m WITH 3m RADII UNLESS OTHERWISE NOTED
NOTE: ALL DRIVES IN C&G ARE 6m UNLESS OTHERWISE NOTED
SEE SHEET 29 FOR -LREV- PROFILE
SEE SHEET 41 FOR -Y8- PROFILE