

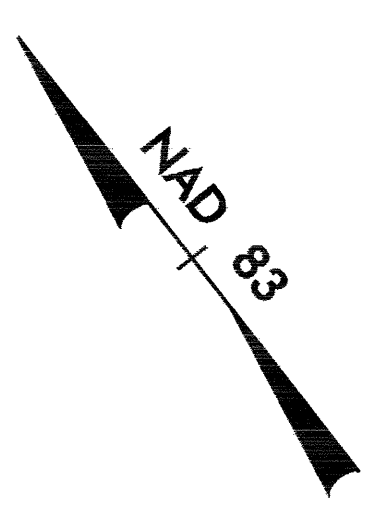
**METRIC**

5 0 10

CONST. REV.

R / W REV.

PROJECT REFERENCE NO.	SHEET NO.
R-2562D	EC-35/CONST.13
R / W SHEET NO.	
ROADWAY DESIGN ENGINEER	HYDRAULICS ENGINEER



71  
FLORA T. TOWNSEND, HEIRS

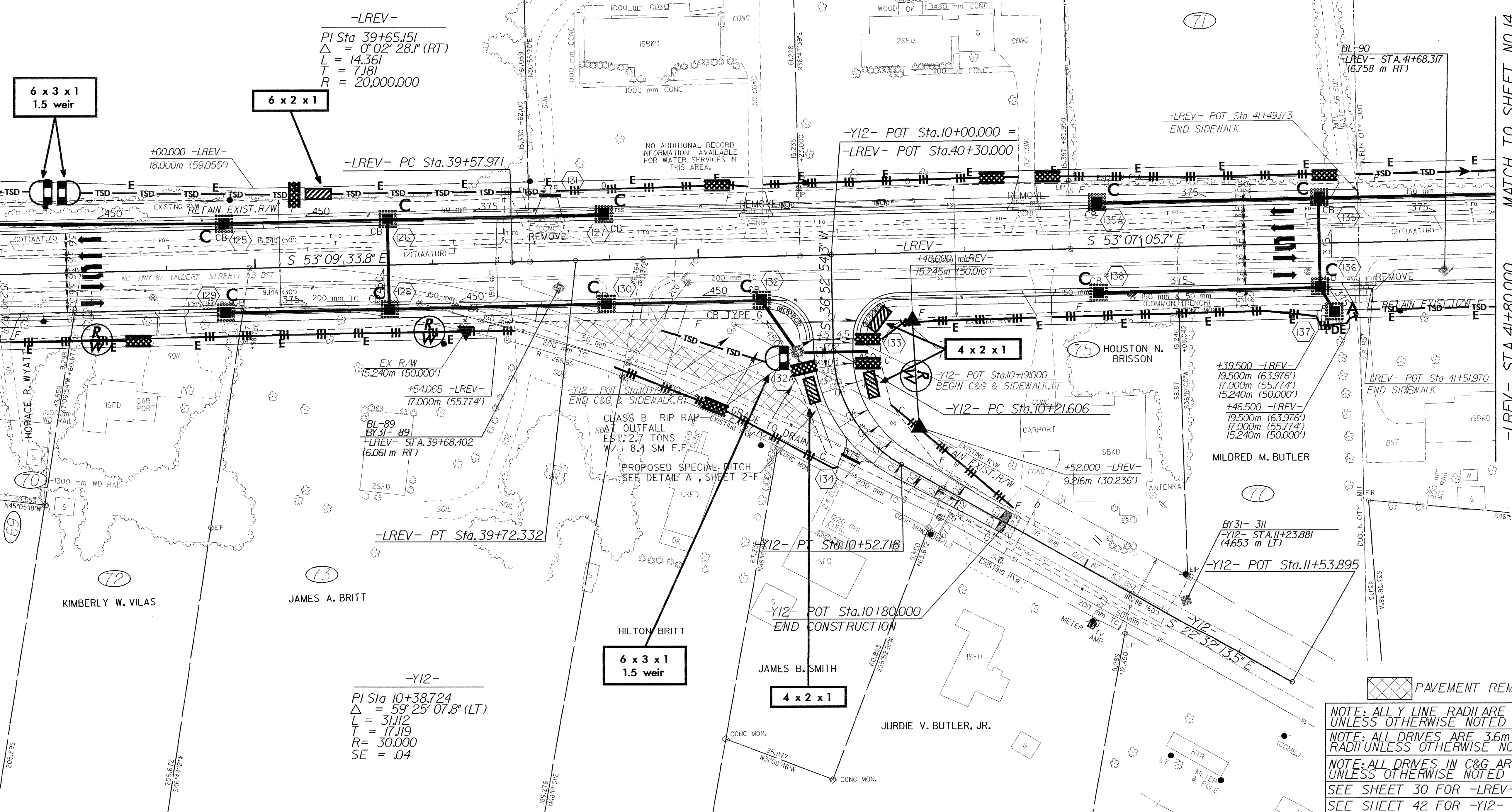
74  
J. B. ELKINS, JR.

76  
DAVID G. KIRBY

71

MATCH TO SHEET NO.12  
-LREV- STA.38+40.000

MATCH TO SHEET NO.14  
-LREV- STA.41+80.000



-LREV-  
PI Sta 39+65.151  
 $\Delta = 0^{\circ} 02' 28.1''$  (RT)  
L = 14.361  
T = 7.181  
R = 20,000.000

-LREV- PC Sta.39+57.971

-Y12- POT Sta.10+00.000 =  
-LREV- POT Sta.40+30.000

-LREV- POT Sta 41+49.173  
END SIDEWALK

+54.065 -LREV-  
17,000m (55,774')  
BL-89  
BY 31-89  
-LREV- STA.39+68.402  
(6.061 m RT)

-LREV- PT Sta.39+72.332

-Y12- POT Sta.10+19.000  
BEGIN C&G & SIDEWALK, LT

-Y12- PC Sta.10+21.606

+39.500 -LREV-  
19,500m (63,976')  
17,000m (55,774')  
15,240m (50,000')  
-LREV- POT Sta 41+51.970  
END SIDEWALK

+46.500 -LREV-  
19,500m (63,976')  
17,000m (55,774')  
15,240m (50,000')

BY 31-311  
-Y12- STA.11+23.881  
(4.653 m LT)

-Y12- POT Sta.11+53.895

-Y12-  
PI Sta 10+38.724  
 $\Delta = 59^{\circ} 25' 07.8''$  (LT)  
L = 31.112  
T = 17.119  
R = 30,000  
SE = .04

4 x 2 x 1

PAVEMENT REMOVAL

NOTE: ALL LINE RADII ARE 10m UNLESS OTHERWISE NOTED  
NOTE: ALL DRIVES ARE 3.6m WITH 3m RADII UNLESS OTHERWISE NOTED  
NOTE: ALL DRIVES IN C&G ARE 6m UNLESS OTHERWISE NOTED  
SEE SHEET 30 FOR -LREV- PROFILE  
SEE SHEET 42 FOR -Y12- PROFILE