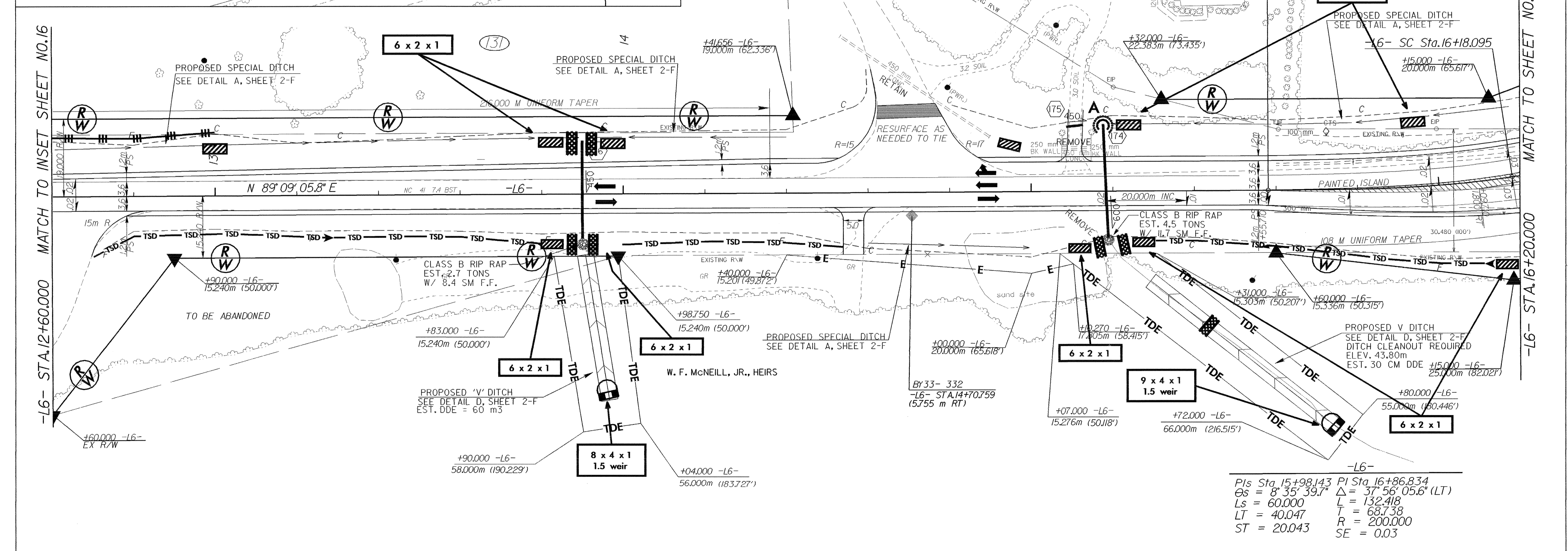
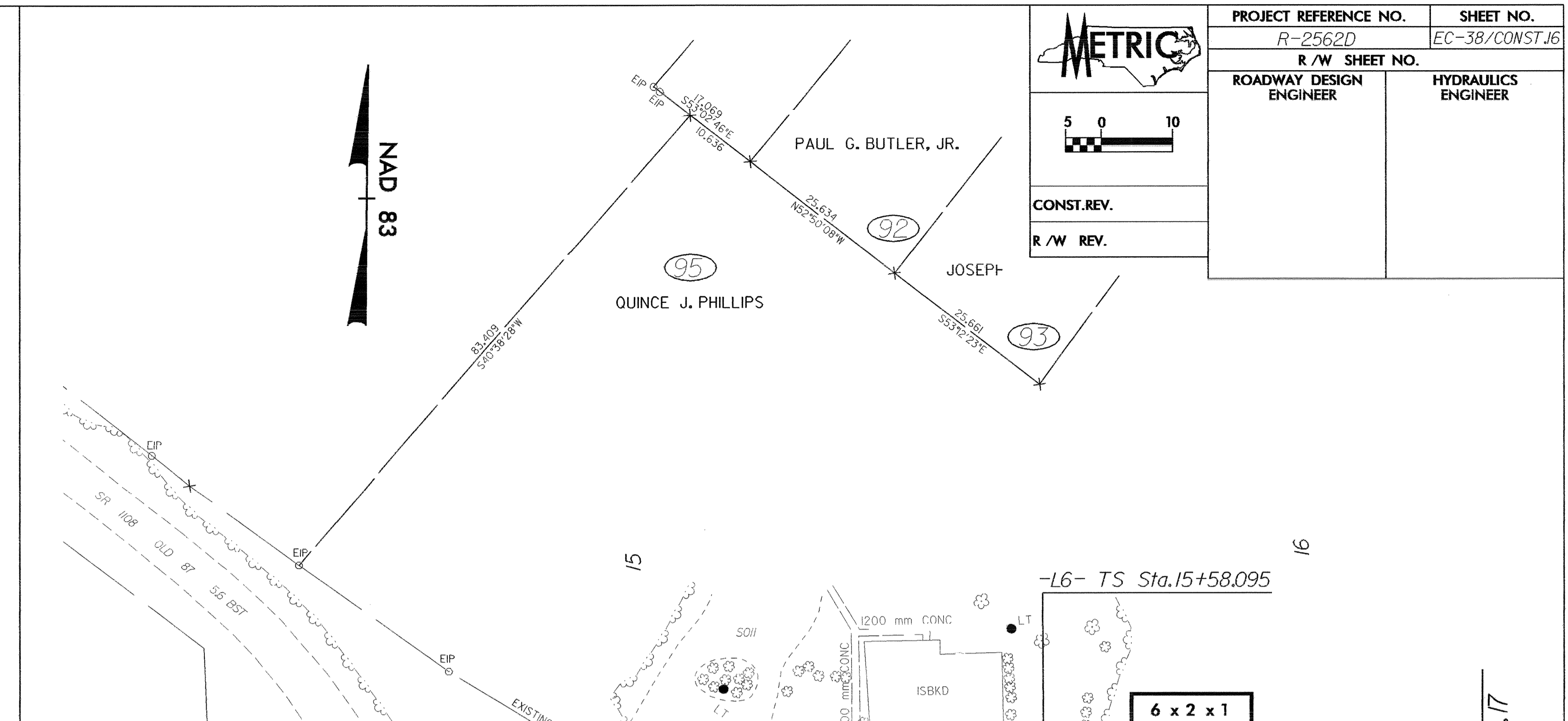
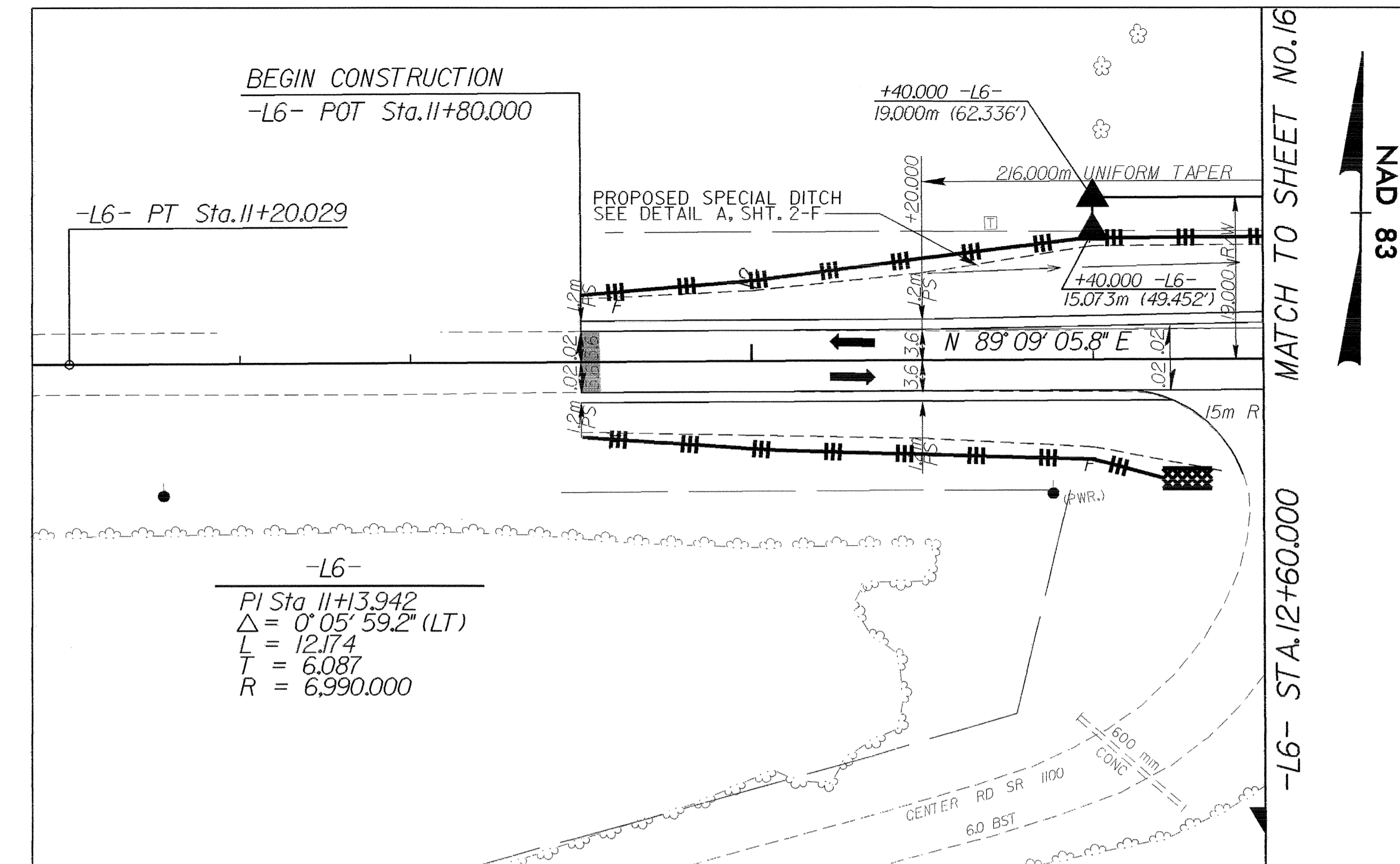
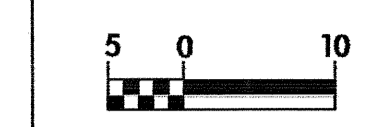


| | | | |
|----------------------------------|--|-----------------------------|--|
| PROJECT REFERENCE NO. R-2562D | | SHEET NO. EC-38/CONST.16 | |
| R/W SHEET NO. | | | |
| ROADWAY DESIGN ENGINEER | | HYDRAULICS ENGINEER | |
| CONST. REV. | | R/W REV. | |



-L6-
 PIs Sta. 15+98.143 PI Sta. 16+86.834
 $\Delta_s = 8^\circ 35' 39.7''$ $\Delta = 37^\circ 56' 05.6''$ (LT)
 $L_s = 60.000$ $L = 132.418$
 $LT = 40.047$ $T = 63.738$
 $ST = 20.043$ $R = 200.000$
 $SE = 0.03$

NOTE: ALL LINE RADII ARE 10m UNLESS OTHERWISE NOTED
 NOTE: ALL DRIVES ARE 3.6m WITH 3m RADII UNLESS OTHERWISE NOTED
 NOTE: ALL DRIVES IN C&G ARE 6m UNLESS OTHERWISE NOTED
 SEE SHEET 43 FOR -L6- PROFILE