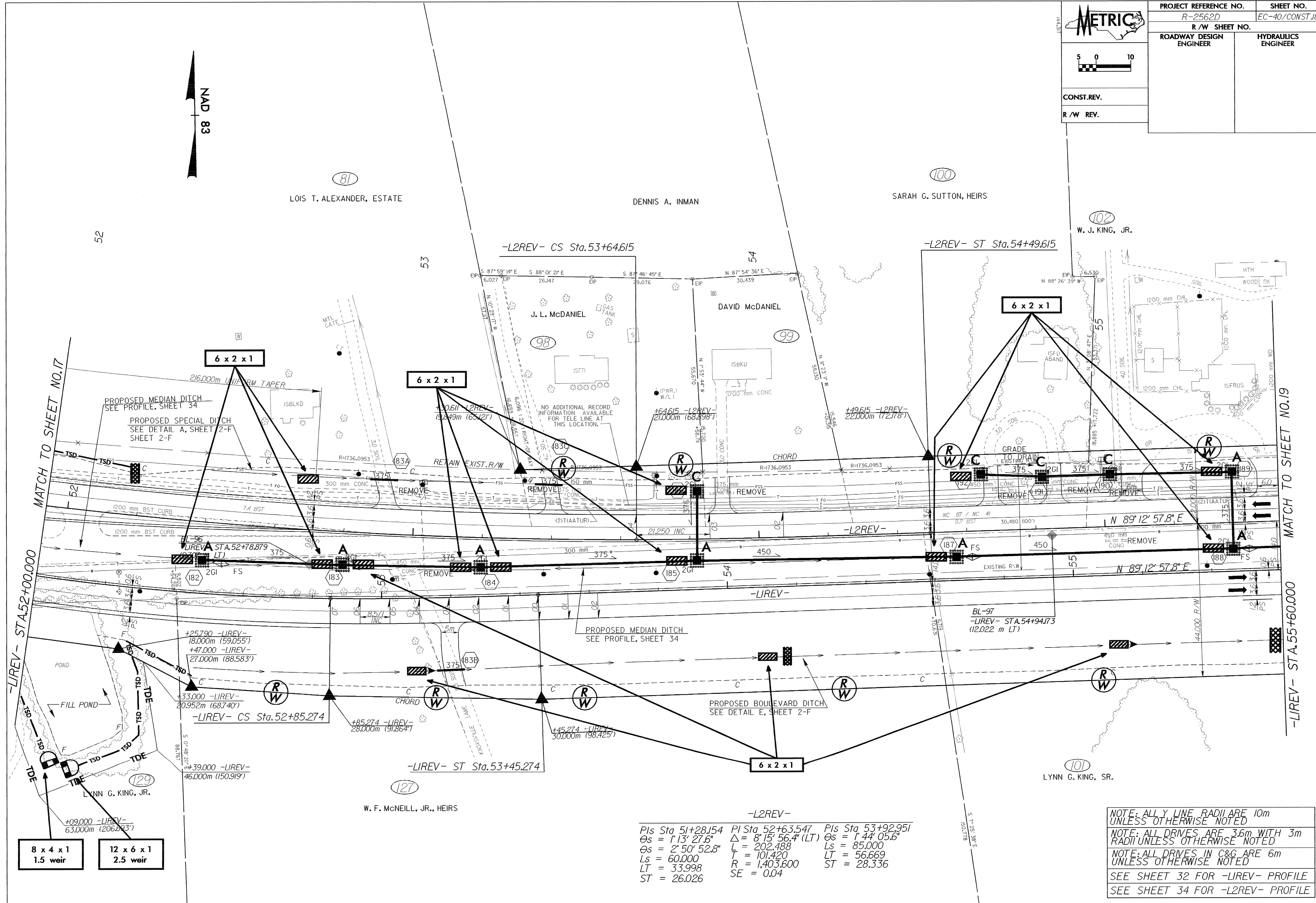


METRIC

CONST. REV.
R/W REV.

PROJECT REFERENCE NO. R-2562D	SHEET NO. EC-40/CONST.18
R/W SHEET NO.	
ROADWAY DESIGN ENGINEER	HYDRAULICS ENGINEER



8 x 4 x 1
1.5 weir

12 x 6 x 1
2.5 weir

-L2REV-

Pls Sta 51+28.154	Pl Sta 52+63.547	Pls Sta 53+92.951
$\theta_s = 1'13'' 27.6''$	$\Delta = 8'15'' 56.4''$ (LT)	$\theta_s = 1'44'' 05.6''$
$L_s = 2'50'' 52.8''$	$L = 202.488$	$L_s = 85.000$
$L_s = 60.000$	$T = 101.420$	$LT = 56.669$
$LT = 33.998$	$R = 1,403.600$	$ST = 28.336$
$ST = 26.026$	$SE = 0.04$	

NOTE: ALL Y LINE RADIARE 10m UNLESS OTHERWISE NOTED

NOTE: ALL DRIVES ARE 3.6m WITH 3m RADI UNLESS OTHERWISE NOTED

NOTE: ALL DRIVES IN C&G ARE 6m UNLESS OTHERWISE NOTED

SEE SHEET 32 FOR -LIREV- PROFILE

SEE SHEET 34 FOR -L2REV- PROFILE