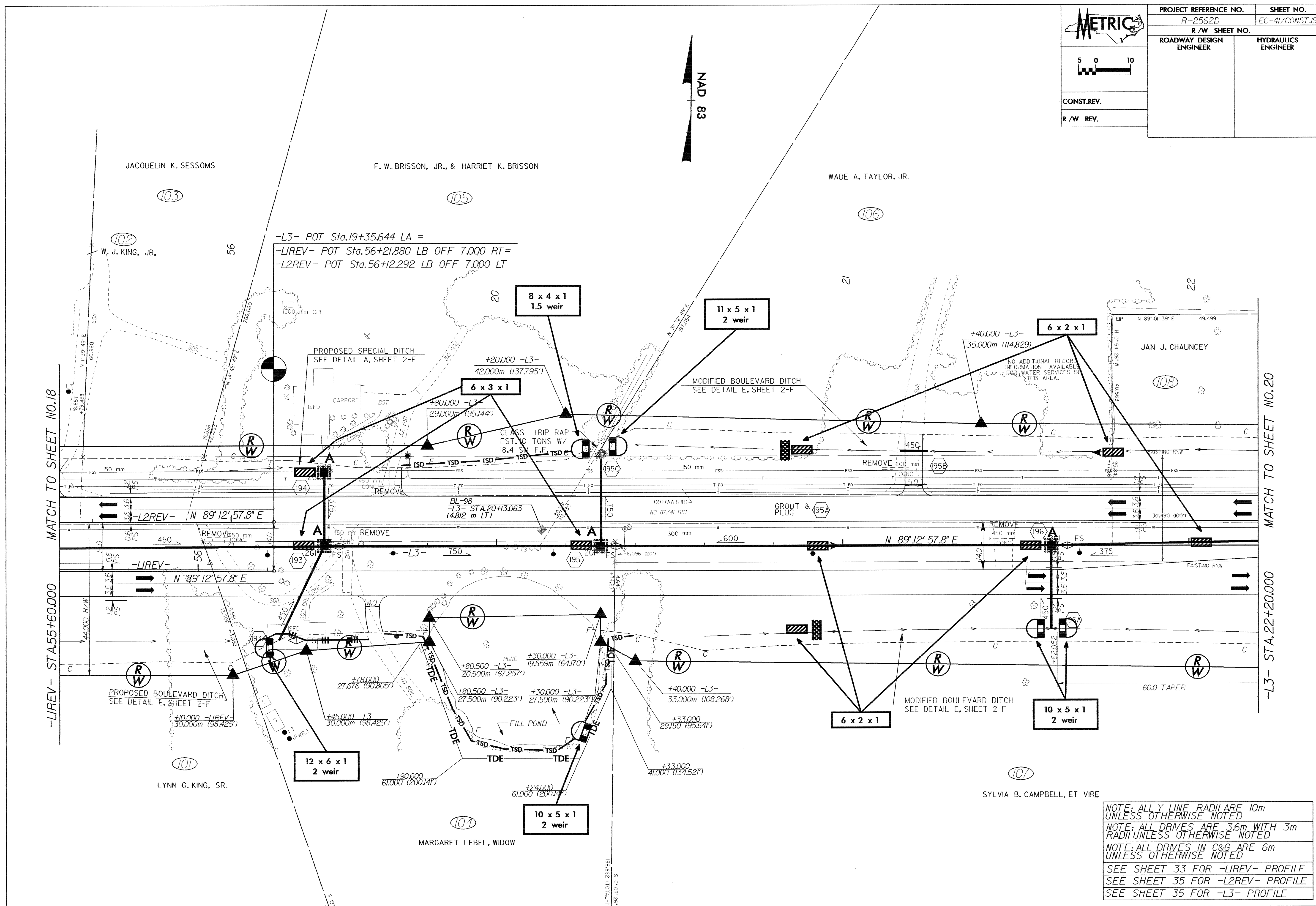
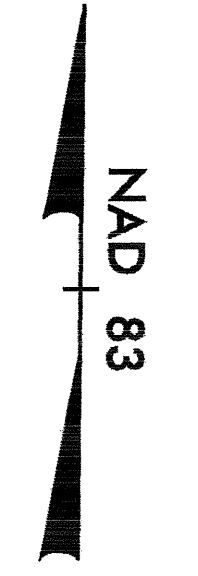
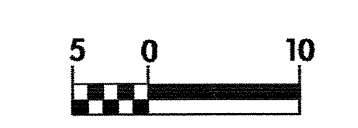




PROJECT REFERENCE NO. R-2562D	SHEET NO. EC-41/CONST.19
R / W SHEET NO.	
ROADWAY DESIGN ENGINEER	HYDRAULICS ENGINEER
CONST.REV.	
R / W REV.	



MATCH TO SHEET NO.18

-LIREV- STA.55+60.000

MATCH TO SHEET NO.20

-L3- STA.22+20.000

NOTE: ALL LINE RADII ARE 10m UNLESS OTHERWISE NOTED
 NOTE: ALL DRIVES ARE 3.6m WITH 3m RADII UNLESS OTHERWISE NOTED
 NOTE: ALL DRIVES IN C&G ARE 6m UNLESS OTHERWISE NOTED
 SEE SHEET 33 FOR -LIREV- PROFILE
 SEE SHEET 35 FOR -L2REV- PROFILE
 SEE SHEET 35 FOR -L3- PROFILE