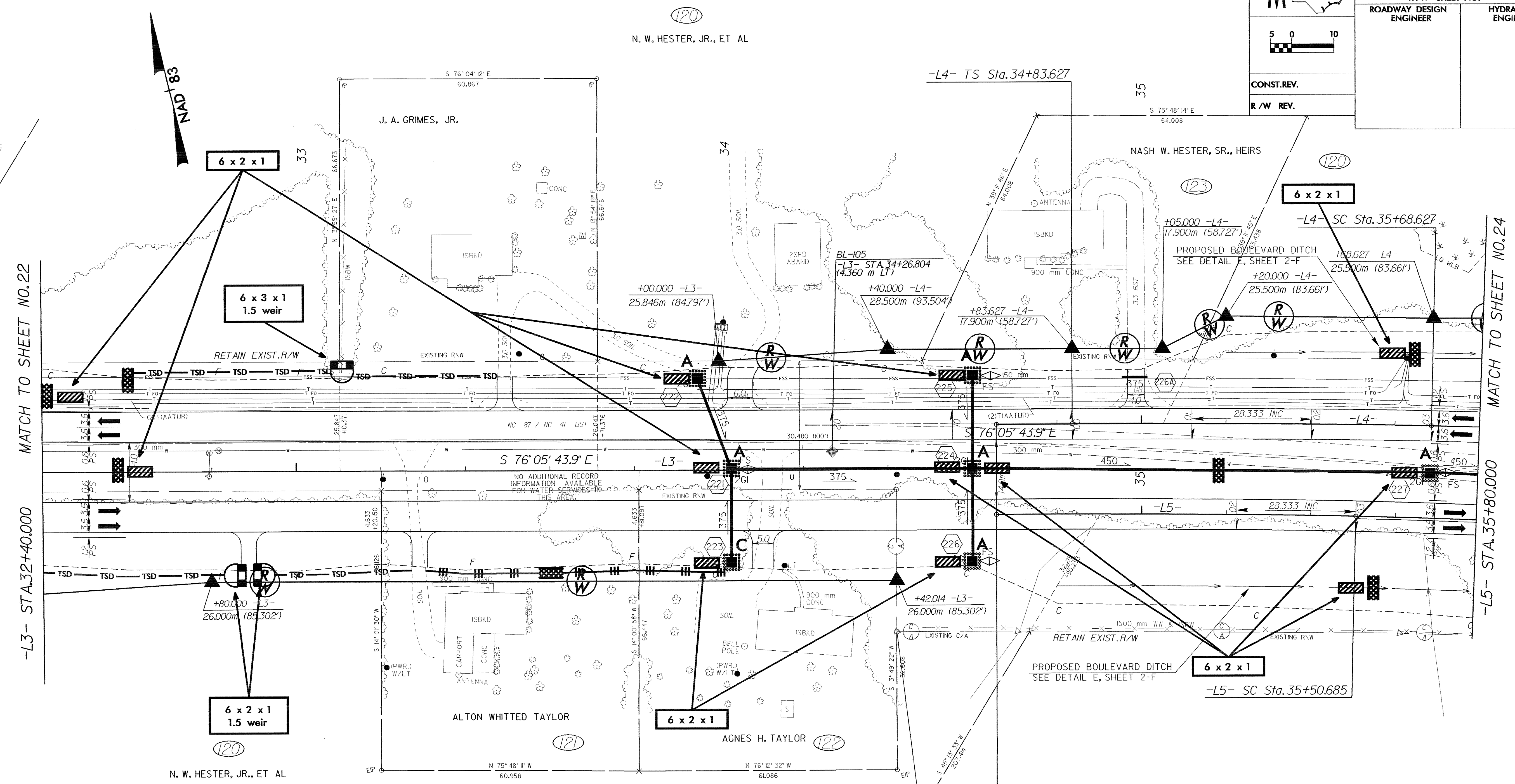


PROJECT REFERENCE NO. R-2562D	SHEET NO. EC-45/CONST.23
R/W SHEET NO.	
ROADWAY DESIGN ENGINEER	HYDRAULICS ENGINEER
CONST.REV.	
R/W REV.	

120  
N. W. HESTER, JR., ET AL



MATCH TO SHEET NO.22

-L3- STA.32+40.000

MATCH TO SHEET NO.24

-L5- STA.35+80.000

-L4-

PIs Sta 35+40.295	PI Sta 37+44.896	PIs Sta 39+48.311
Os = 1° 23' 40.8"	Δ = 11° 31' 46.8" (RT)	Os = 1° 23' 40.8"
Ls = 85,000	L = 351,349	Ls = 85,000
LT = 56,668	T = 176,270	LT = 56,668
ST = 28,335	R = 1,746,000	ST = 28,335
	SE = 0.03	

-L5-

PIs Sta 35+22.353	PI Sta 37+24.444	PIs Sta 39+25.371
Os = 1° 24' 38.9"	Δ = 11° 29' 50.5" (RT)	Os = 1° 24' 38.9"
Ls = 85,000	L = 346,351	Ls = 85,000
LT = 56,668	T = 173,759	LT = 56,668
ST = 28,335	R = 1,726,000	ST = 28,335
	SE = 0.03	

-L3- POT Sta.34+65.685 LB=  
-L4- POT Sta.34+65.685 LA (10.6 LT) =  
-L5- TS Sta.34+65.685 LA (10.6 RT)

BEGIN EXISTING  
CONTROLLED ACCESS  
-L3- POT Sta.34+41.999  
38.096m (124.987')

NOTE: ALL Y LINE RADII ARE 10m  
UNLESS OTHERWISE NOTED  
NOTE: ALL DRIVES ARE 3.6m WITH  
3m RADII UNLESS OTHERWISE NOTED  
NOTE: ALL DRIVES IN C&G ARE 6m  
UNLESS OTHERWISE NOTED  
SEE SHEET 37 FOR -L3- PROFILE  
SEE SHEET 37 FOR -L4- PROFILE  
SEE SHEET 38 FOR -L5- PROFILE