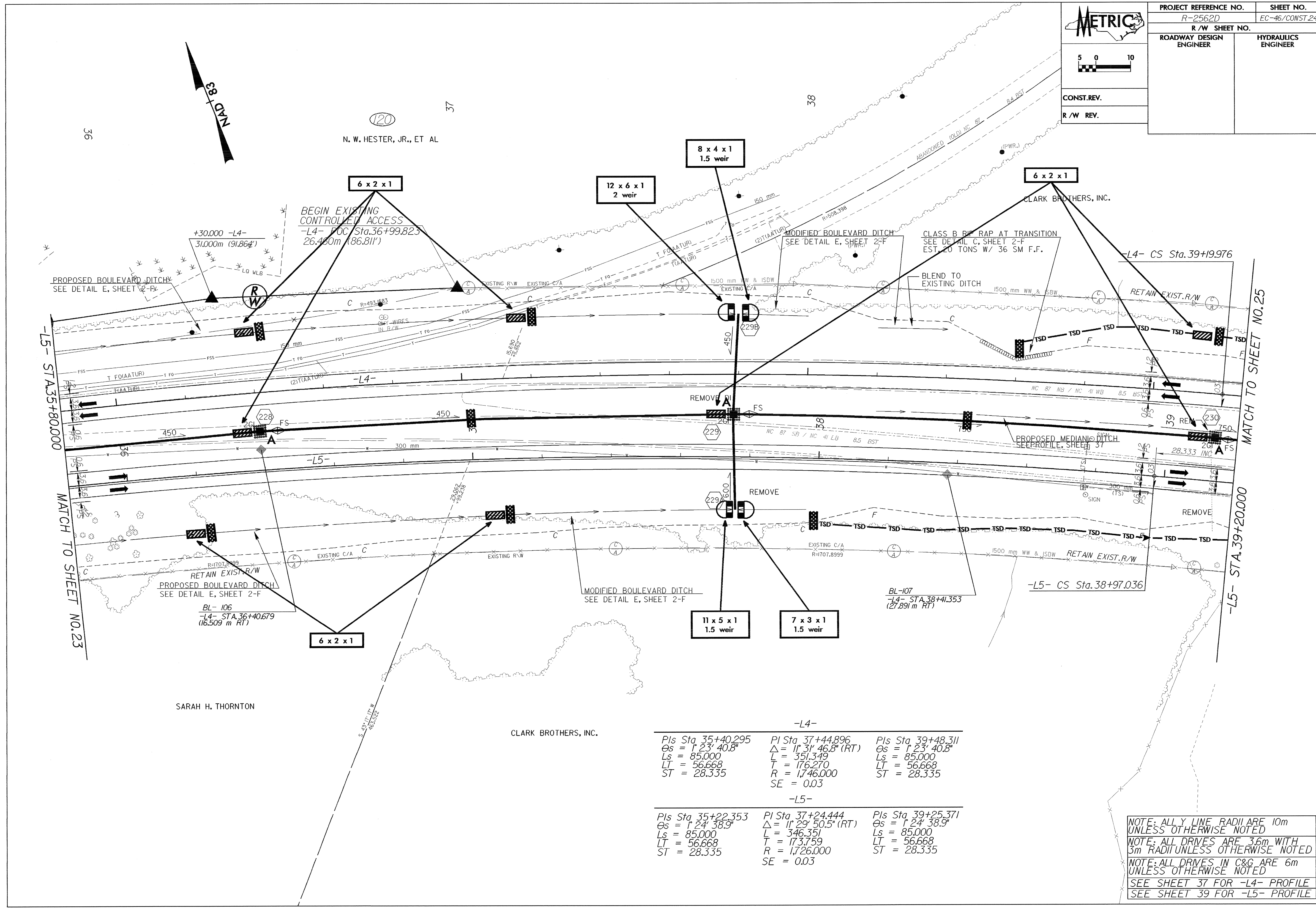
 5 0 10	PROJECT REFERENCE NO.	SHEET NO.
	R-2562D	EC-46/CONST.24
	R / W SHEET NO.	
ROADWAY DESIGN ENGINEER	HYDRAULICS ENGINEER	
CONST. REV.		
R / W REV.		



-L4-		
Pls Sta 35+40.295	Pls Sta 37+44.896	Pls Sta 39+48.311
Os = 1' 23' 40.8"	Δ = 1' 31' 46.8" (RT)	Os = 1' 23' 40.8"
Ls = 85.000	L = 351.349	Ls = 85.000
LT = 56.668	T = 176.270	LT = 56.668
ST = 28.335	R = 1,746.000	ST = 28.335
	SE = 0.03	
-L5-		
Pls Sta 35+22.353	Pls Sta 37+24.444	Pls Sta 39+25.371
Os = 1' 24' 38.9"	Δ = 1' 29' 50.5" (RT)	Os = 1' 24' 38.9"
Ls = 85.000	L = 346.351	Ls = 85.000
LT = 56.668	T = 173.759	LT = 56.668
ST = 28.335	R = 1,726.000	ST = 28.335
	SE = 0.03	

NOTE: ALL Y LINE RADII ARE 10m UNLESS OTHERWISE NOTED
 NOTE: ALL DRIVES ARE 3.6m WITH 3m RADII UNLESS OTHERWISE NOTED
 NOTE: ALL DRIVES IN C&G ARE 6m UNLESS OTHERWISE NOTED
 SEE SHEET 37 FOR -L4- PROFILE
 SEE SHEET 39 FOR -L5- PROFILE