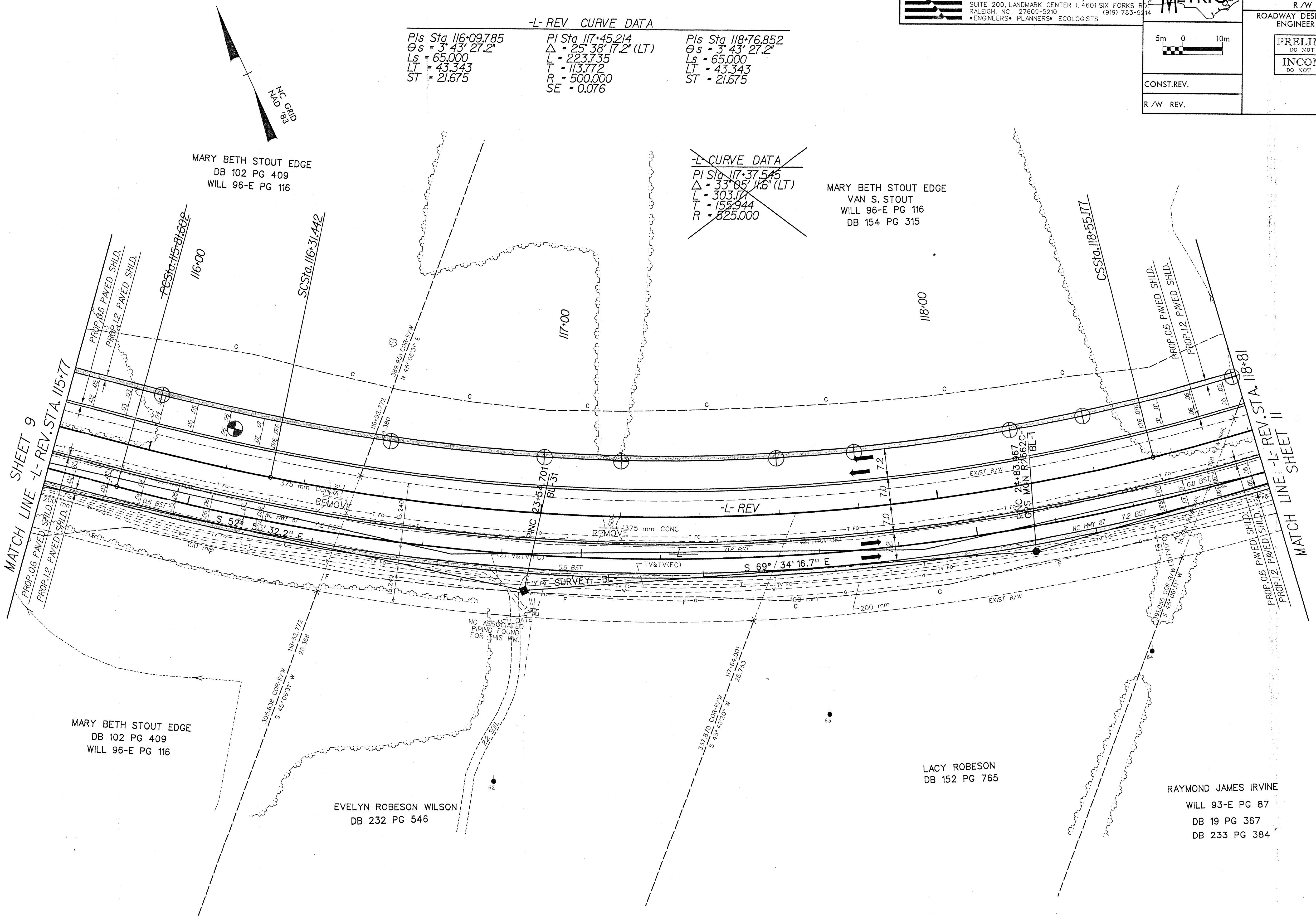


-L- REV CURVE DATA

| | | |
|--|--|--|
| PIs Sta 116+09.785 Os = 3° 43' 27.2" Ls = 65.000 LT = 43.343 ST = 21.675 | PI Sta 117+45.214 Δ = 25° 38' 17.2" (LT) L = 223.735 T = 113.772 R = 500.000 SE = 0.076 | PIs Sta 118+76.852 Os = 3° 43' 27.2" Ls = 65.000 LT = 43.343 ST = 21.675 |
|--|--|--|

~~**-L- CURVE DATA**~~

~~PI Sta 117+37.545
Δ = 33° 05' 11.6" (LT)
L = 303.171
T = 155.944
R = 825.000~~



SEE SHEET 35 FOR -L- REV. PROFILE