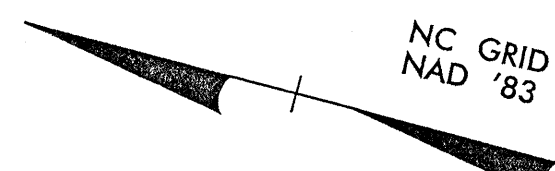
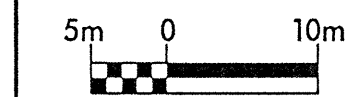




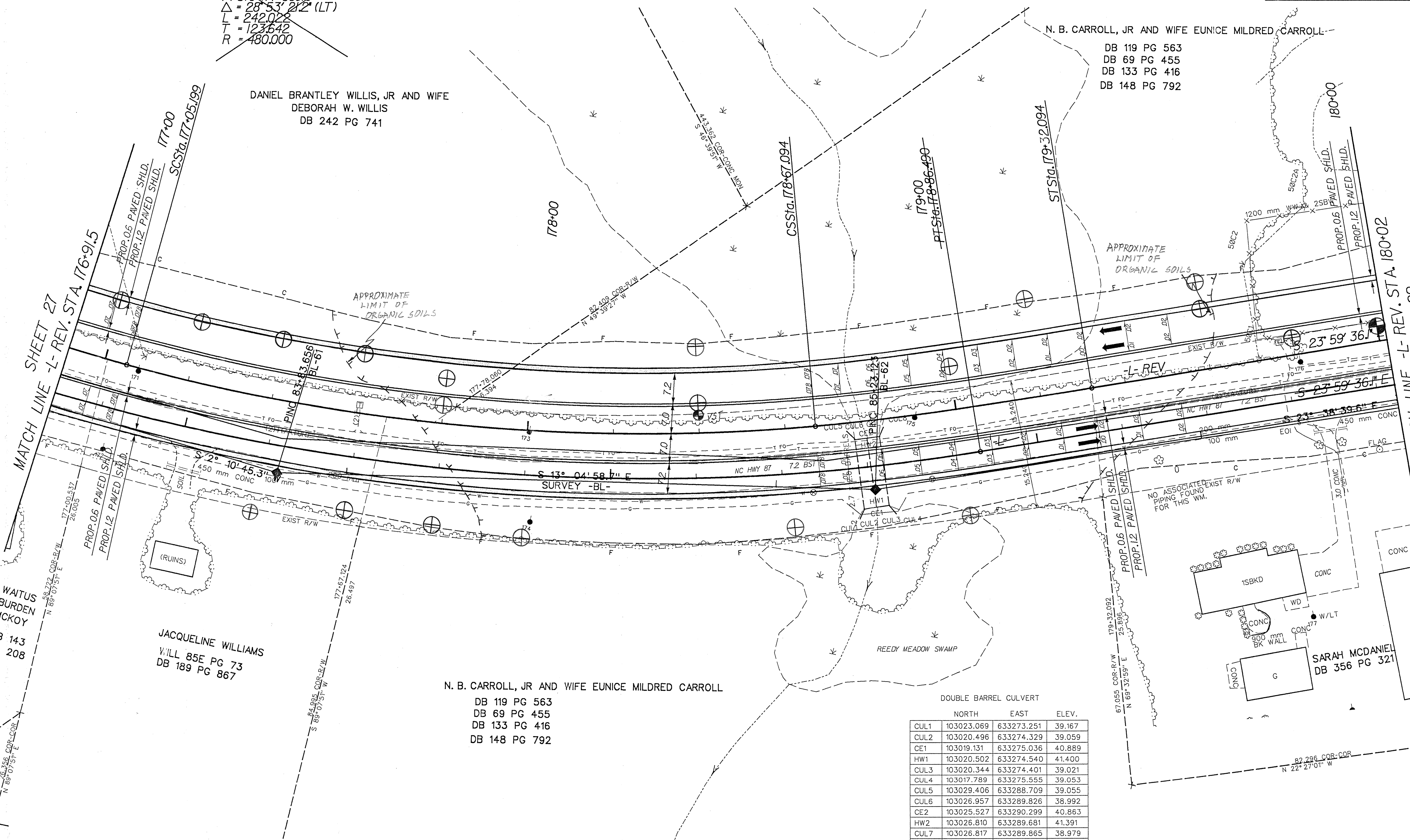
| | |
|--|---------------------|
| PROJECT REFERENCE NO. R-2562C | SHEET NO. 28 |
| R/W SHEET NO. | |
| ROADWAY DESIGN ENGINEER | HYDRAULICS ENGINEER |
| PRELIMINARY PLANS DO NOT USE FOR CONSTRUCTION | |
| INCOMPLETE PLANS DO NOT USE FOR R/W ACQUISITION | |
| CONST.REV. | |
| R/W REV. | |



-L- REV CURVE DATA

| | | |
|--|--|--|
| Pls Sta 176+83.544 θs = 4° 08' 16.9" Ls = 65.000 LT = 43.345 ST = 21.677 | Pls Sta 177+87.031 Δ = 20° 36' 47.4" (LT) L = 161.896 T = 81.832 R = 450.000 SE = 0.078 | Pls Sta 178+88.772 θs = 4° 08' 16.9" Ls = 65.000 LT = 43.345 ST = 21.677 |
|--|--|--|

~~L-CURVE DATA~~
~~Pls Sta 177+68.110~~
~~Δ = 28° 53' 21.2" (LT)~~
~~L = 242.028~~
~~T = 123.642~~
~~R = 480.000~~



N. B. CARROLL, JR AND WIFE EUNICE MILDRED CARROLL-
DB 119 PG 563
DB 69 PG 455
DB 133 PG 416
DB 148 PG 792

DANIEL BRANTLEY WILLIS, JR AND WIFE
DEBORAH W. WILLIS
DB 242 PG 741

WAITUS
BURDEN
MCKOY
DB 143
PG 208

JACQUELINE WILLIAMS
WILL 85E PG 73
DB 189 PG 867

N. B. CARROLL, JR AND WIFE EUNICE MILDRED CARROLL
DB 119 PG 563
DB 69 PG 455
DB 133 PG 416
DB 148 PG 792

DOUBLE BARREL CULVERT

| | NORTH | EAST | ELEV. |
|------|------------|------------|--------|
| CUL1 | 103023.069 | 633273.251 | 39.167 |
| CUL2 | 103020.496 | 633274.329 | 39.059 |
| CE1 | 103019.131 | 633275.036 | 40.889 |
| HW1 | 103020.502 | 633274.540 | 41.400 |
| CUL3 | 103020.344 | 633274.401 | 39.021 |
| CUL4 | 103017.789 | 633275.555 | 39.053 |
| CUL5 | 103029.406 | 633288.709 | 39.055 |
| CUL6 | 103026.957 | 633289.826 | 38.992 |
| CE2 | 103025.527 | 633290.299 | 40.863 |
| HW2 | 103026.810 | 633289.681 | 41.391 |
| CUL7 | 103026.817 | 633289.865 | 38.979 |
| CUL8 | 103024.232 | 633290.896 | 39.048 |

SEE SHEET 44 FOR -L- REV. PROFILE