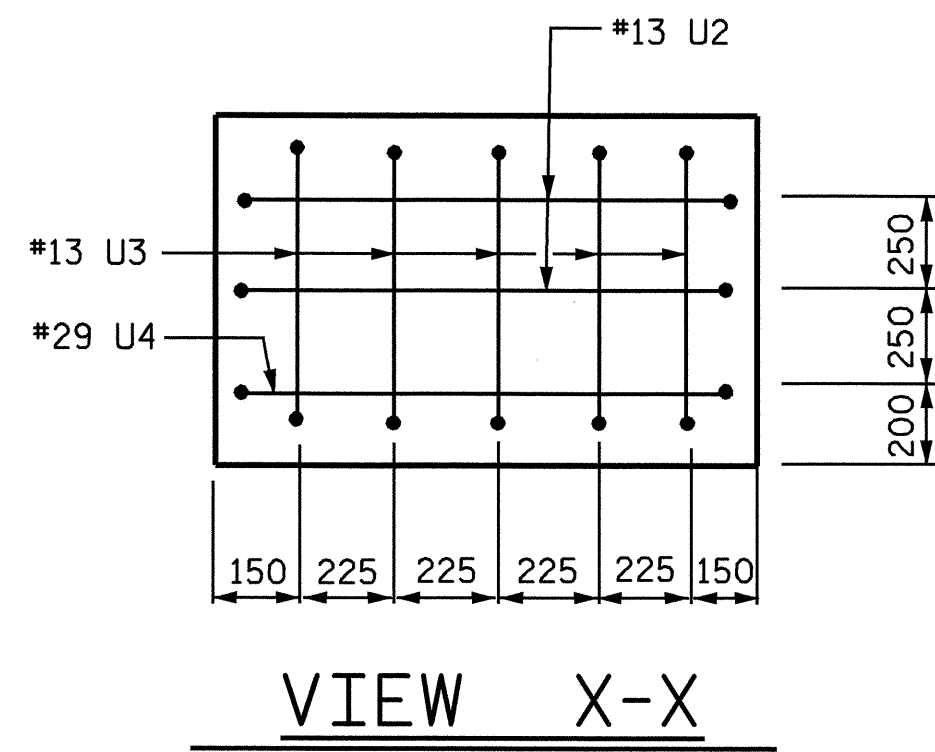
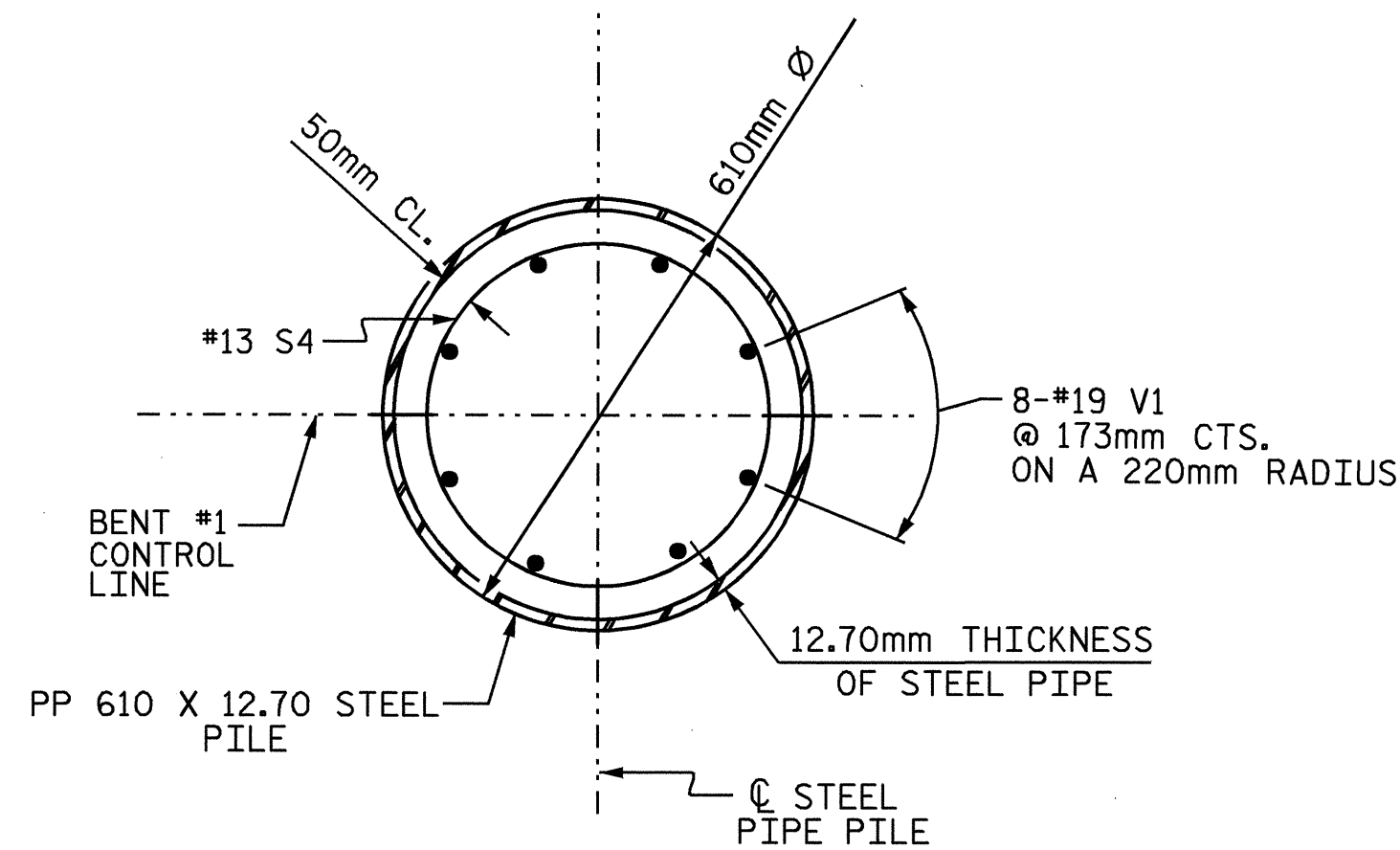


SECTION A-A

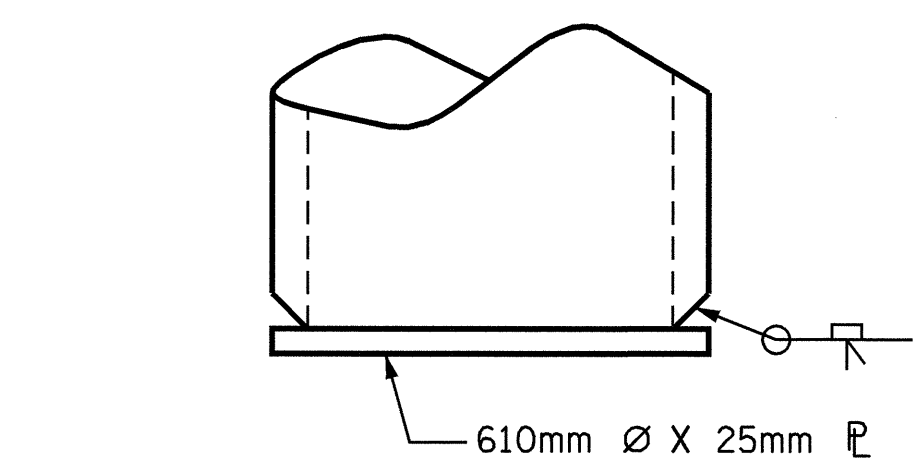


VIEW X-X

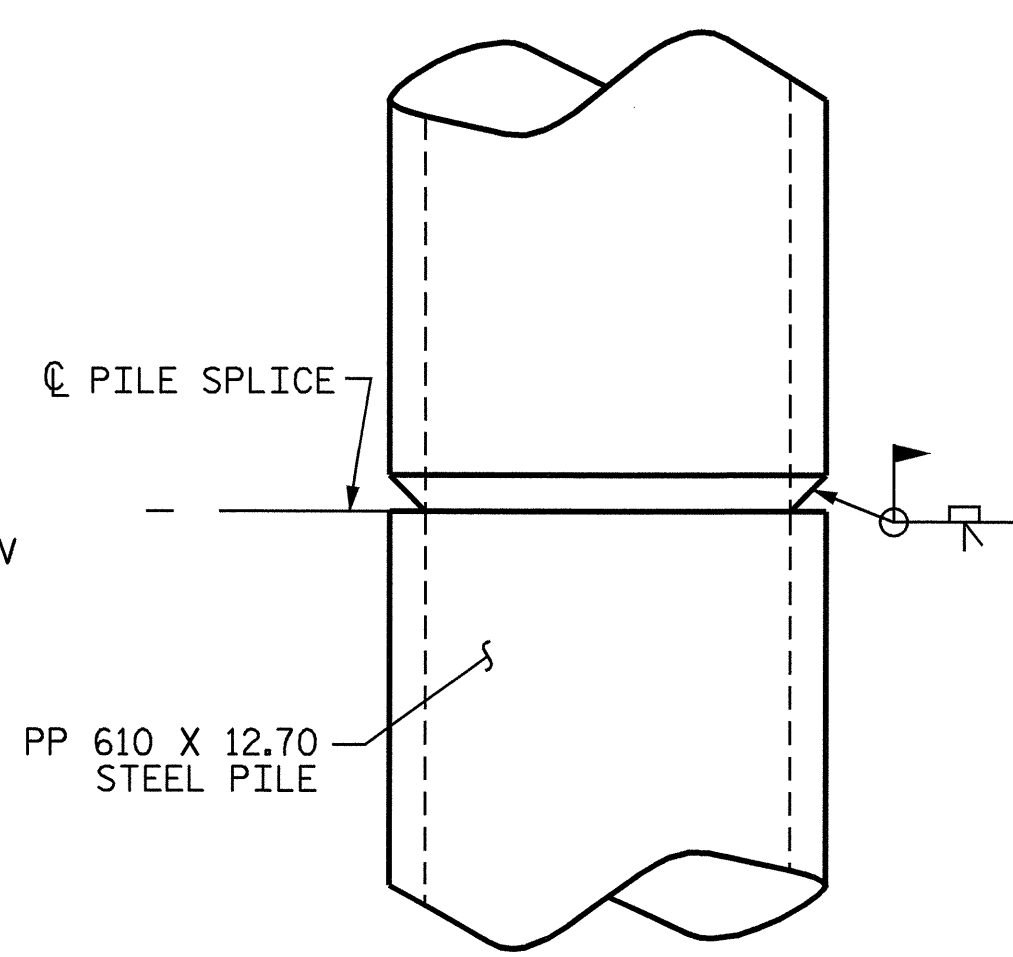


DETAIL B

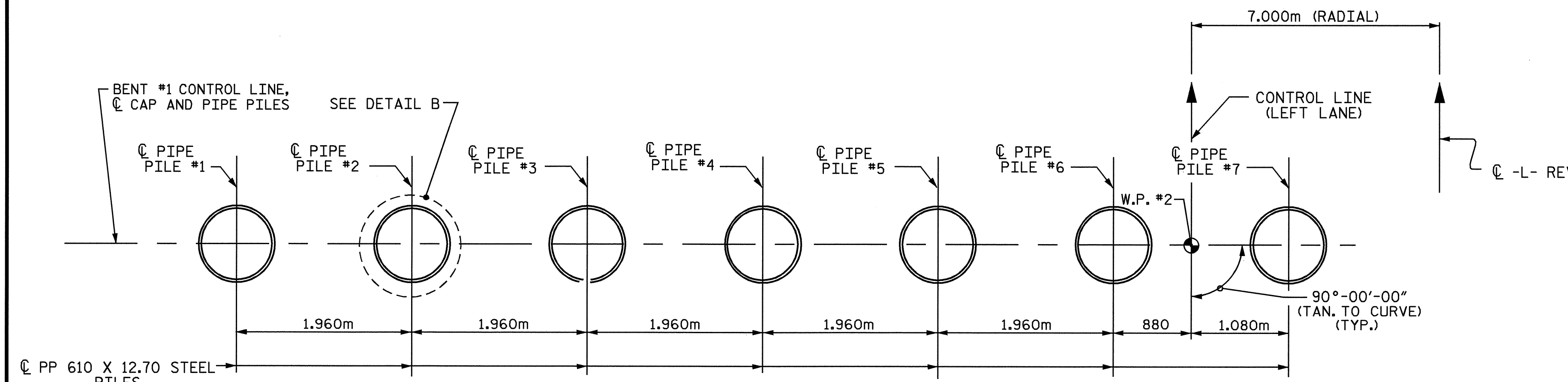
BAR TYPES		BILL OF MATERIAL				
		BENT #1				
BAR	NO.	SIZE	TYPE	LENGTH	WEIGHT	
B1	4	29	1	13560	274	
B2	4	29	STR	12860	260	
B3	2	16	STR	12860	39	
B4	8	13	STR	6820	54	
B5	28	13	STR	1100	31	
B6	4	13	STR	3060	12	
B7	12	13	STR	2700	32	
B8	4	13	STR	1200	5	
S1	38	16	2	2680	153	
S2	38	16	3	1380	79	
S3	14	13	4	3080	43	
U1	46	13	5	2000	91	
U2	4	13	5	1940	8	
U3	10	13	5	1600	16	
U4	2	29	5	3280	33	
REINFORCING STEEL (KG.)				TOTAL	1130	
CLASS A CONCRETE POUR #2 (BENT CAP)				CU.METER	13.6	
STEEL PIPE PILES						
BAR	NO.	SIZE	TYPE	LENGTH	WEIGHT	
V1	56	19	6	2020	253	
S4	42	13	4	1900	79	
REINFORCING STEEL (KG.)				TOTAL	332	
CLASS A CONCRETE POUR #1 (CONCRETE PLUG)				CU.METER	2.9	
PP 610 X 12.70 STEEL PILES						
NO.	7	LENGTH	108.5	LIN. METER.		



DRIVING PLATE DETAIL



PILE SPLICE DETAILS

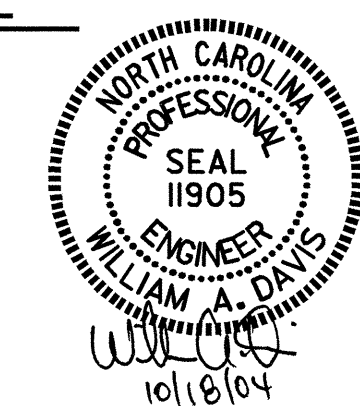


PLAN OF STEEL PIPE PILES

PROJECT NO. R-2562C  
 BLADEN COUNTY  
 STATION: 178+79.500 -L- REV

SHEET 2 OF 2

STATE OF NORTH CAROLINA DEPARTMENT OF TRANSPORTATION RALEIGH					
SUBSTRUCTURE BENT #1 (LEFT LANE)					
REVISIONS					
NO.	BY:	DATE:	NO.	BY:	DATE:
1			3		
2			4		
SHEET NO. S-22					TOTAL SHEETS 68



DRAWN BY : J. G. KHARVA DATE : 7/12/04  
 CHECKED BY : J. D. HAWK DATE : 09/07/04