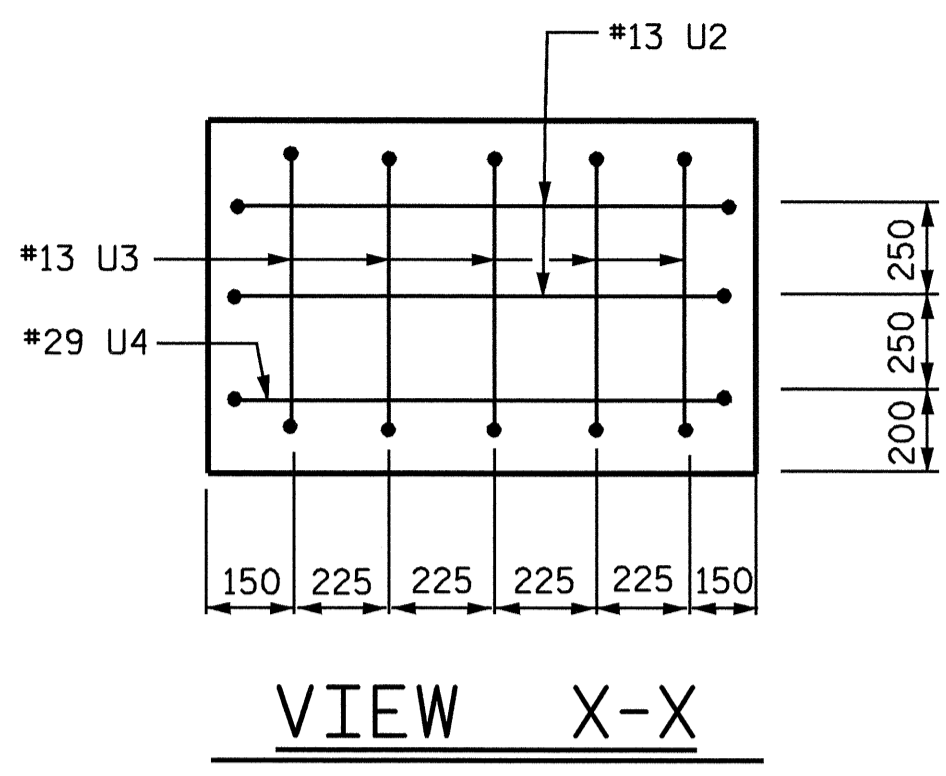
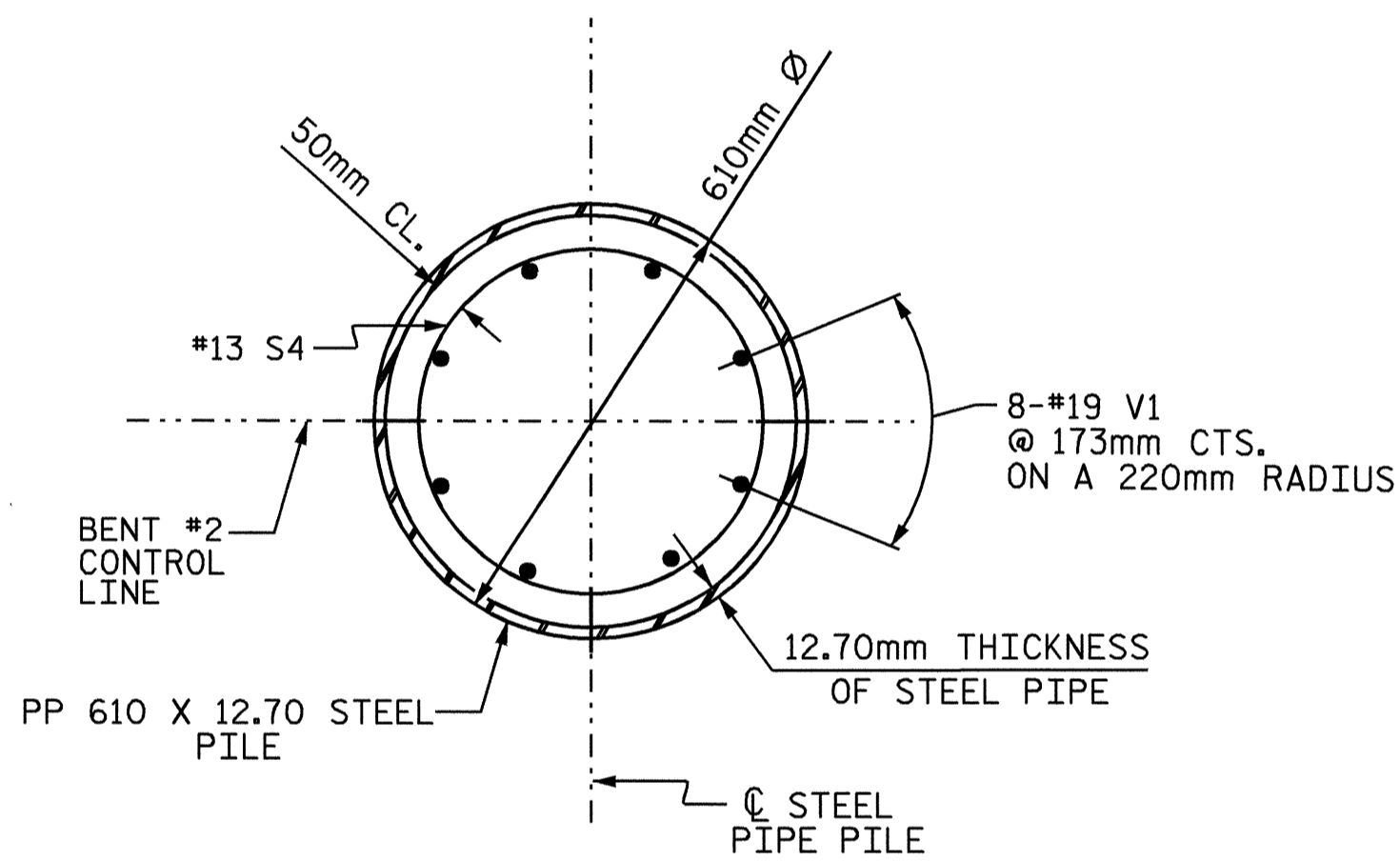


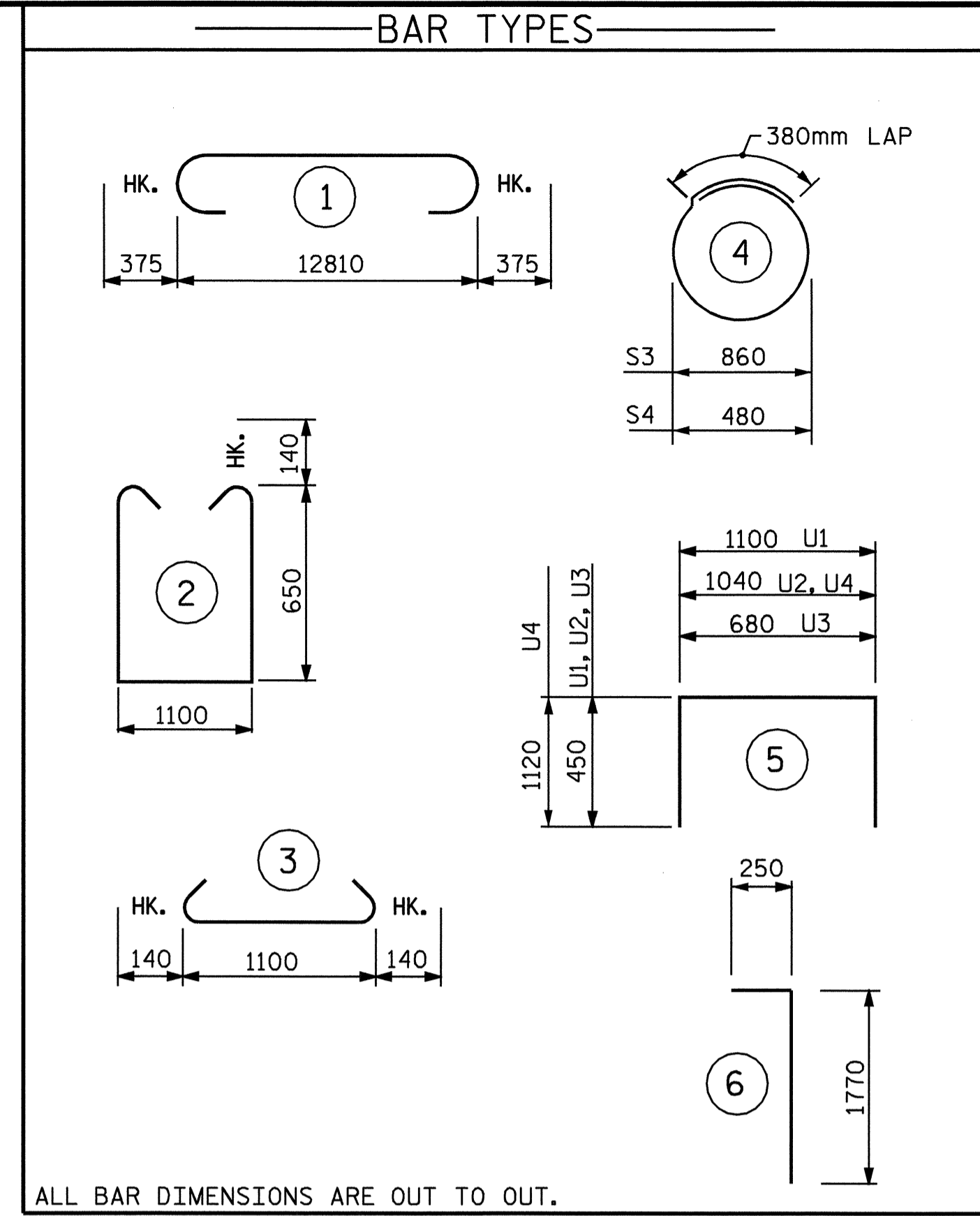
SECTION A-A



VIEW X-X



DETAIL B

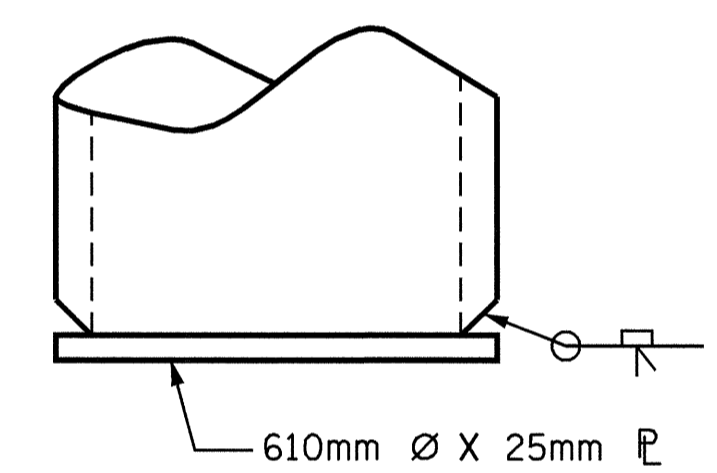


ALL BAR DIMENSIONS ARE OUT TO OUT.

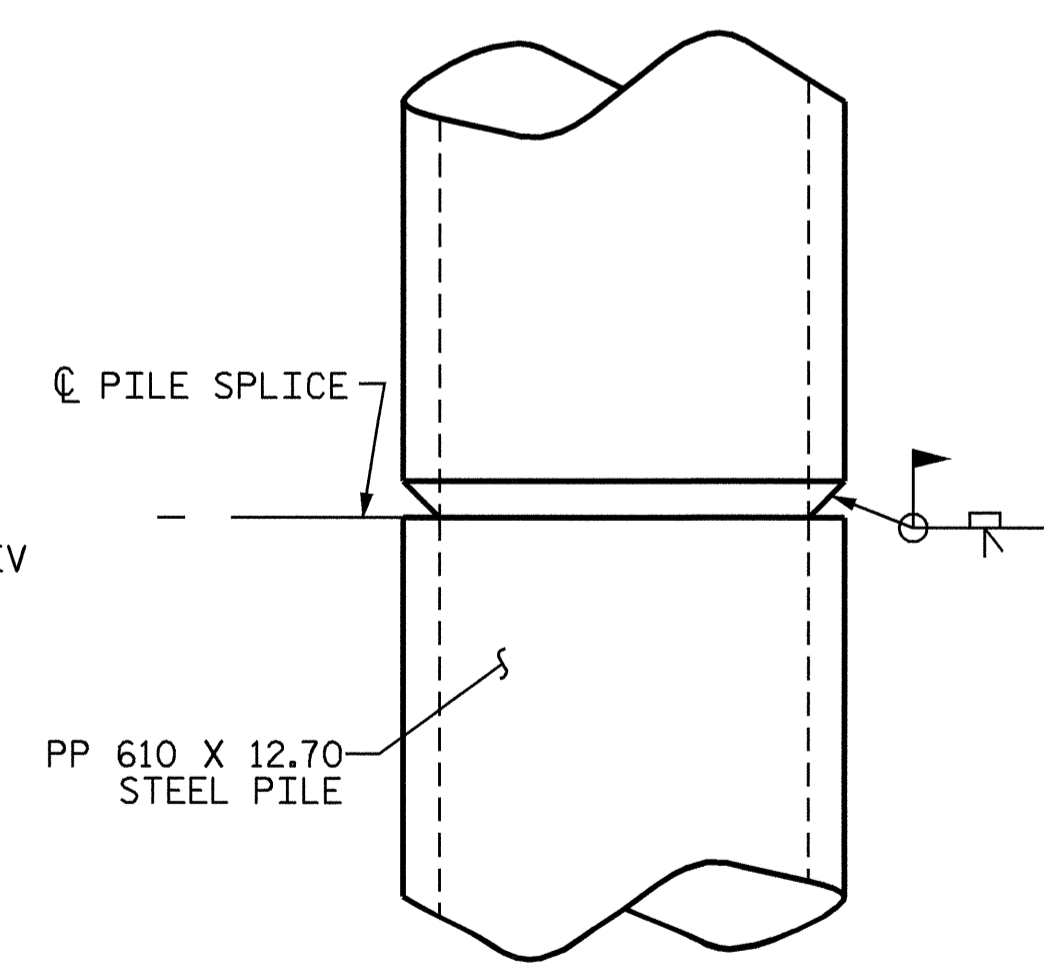
BILL OF MATERIAL					
BENT #2					
BAR NO.	NO.	SIZE	TYPE	LENGTH	WEIGHT
B1	4	29	1	13560	274
B2	4	29	STR	12860	260
B3	2	16	STR	12860	39
B4	8	13	STR	6820	54
B5	28	13	STR	1100	31
B6	4	13	STR	3060	12
B7	12	13	STR	2700	32
B8	4	13	STR	1200	5
S1	38	16	2	2680	153
S2	38	16	3	1380	79
S3	14	13	4	3080	43
U1	46	13	5	2000	91
U2	4	13	5	1940	8
U3	10	13	5	1580	16
U4	2	29	5	3280	33
REINFORCING STEEL (KG.)				TOTAL	1130
CLASS A CONCRETE POUR #2 (BENT CAP)				CUMETER	13.2

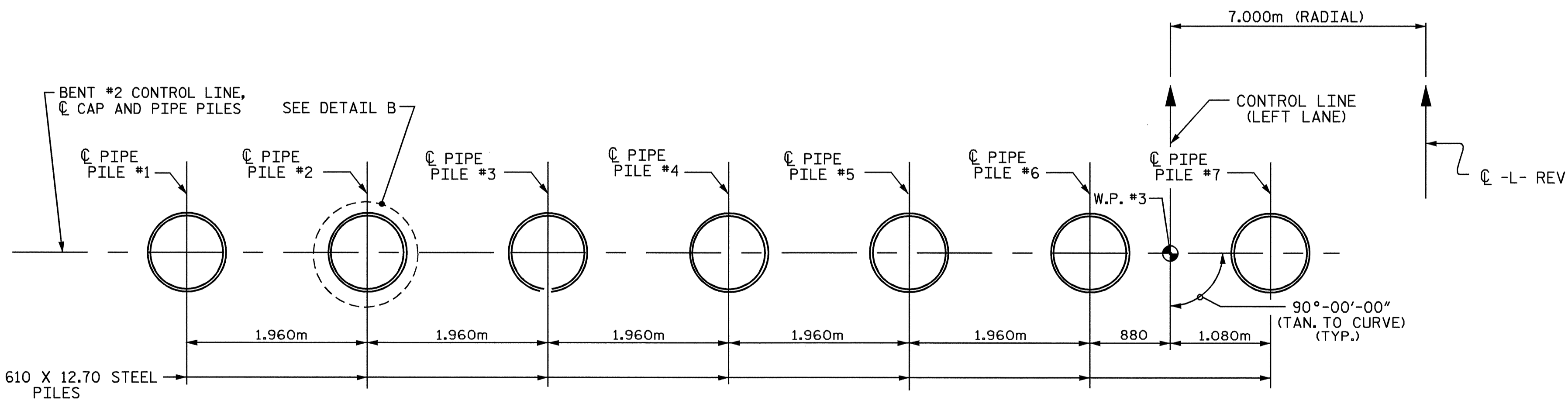
STEEL PIPE PILES					
BAR NO.	NO.	SIZE	TYPE	LENGTH	WEIGHT
V1	56	19	6	2020	253
S4	42	13	4	1820	76
REINFORCING STEEL (KG.)				TOTAL	329
CLASS A CONCRETE POUR #1 (CONCRETE PLUG)				CUMETER	2.9
PP 610 X 12.70 STEEL PILES					
NO.	7	LENGTH	80.5	LIN. METER.	



DRIVING PLATE DETAIL



PILE SPLICE DETAILS

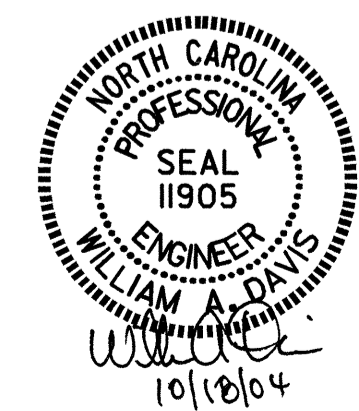


PLAN OF STEEL PIPE PILES

PROJECT NO. R-2562C  
BLADEN COUNTY  
 STATION: 178+79.500 -L- REV

SHEET 2 OF 2

STATE OF NORTH CAROLINA DEPARTMENT OF TRANSPORTATION RALEIGH					
SUBSTRUCTURE BENT #2 (LEFT LANE)					
REVISIONS					
NO.	BY:	DATE:	NO.	BY:	DATE:
1			3		
2			4		
SHEET NO.					S-24
TOTAL SHEETS					68



DRAWN BY : J. G. KHARVA DATE : 7/12/04  
 CHECKED BY : J. D. HAWK DATE : 09/07/04