

CLEARING AND GRUBBING  
EROSION CONTROL FOR  
CONSTRUCTION SHEET 04

NOTE:  
PLACE TEMPORARY ROCK SEDIMENT DAMS TYPE-B  
AND TEMPORARY ROCK SILT CHECKS TYPE-A AT  
DRAINAGE OUTLETS.



PROJECT REFERENCE NO. R-2562C SHEET NO. EC-3/CONST.4

ROADWAY DESIGN ENGINEER HYDRAULICS ENGINEER



CONST. REV.

R/W REV.

**-L- CURVE DATA**

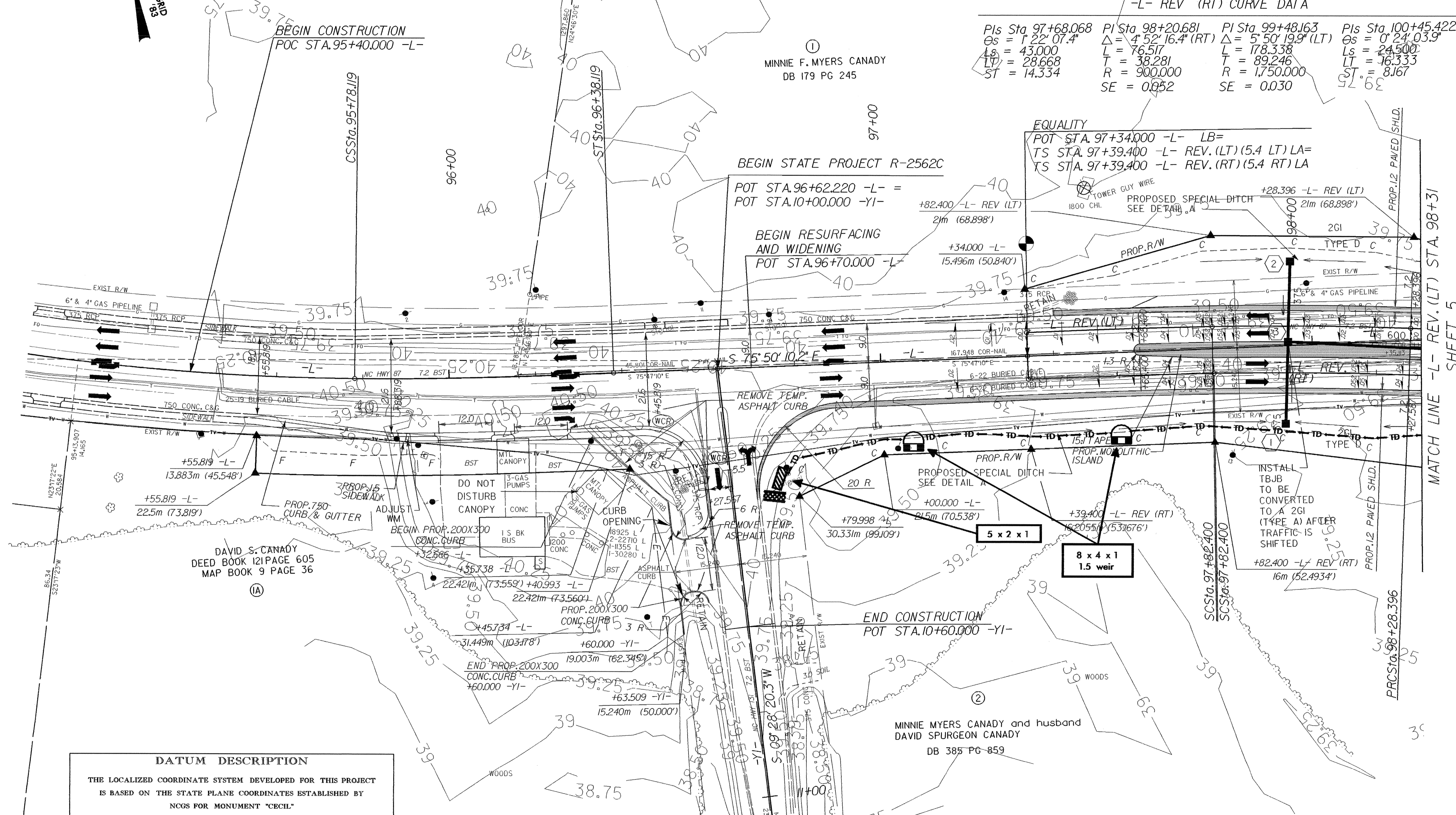
Pls Sta 94+27.088 Os = 2°56'17.7" Ls = 60.000 LT = 40.006 ST = 20.005	Pls Sta 95+12.8765 Δ = 12°50'02.1" (LT) L = 131.037 T = 65.794 R = 585.000 SE = 0.05	Pls Sta 95+98.124 Os = 2°56'17.7" Ls = 60.000 LT = 40.006 ST = 20.005	Pls Sta 97+68.068 Os = 1°22'07.4" Ls = 43.000 LT = 28.668 ST = 14.334	Pls Sta 98+05.403 Δ = 2°55'41.5" (RT) L = 45.996 T = 23.003 R = 900.000 SE = 0.052	Pls Sta 99+24.574 Δ = 6°17'29.4" (LT) L = 192.163 T = 96.178 R = 1,750.000 SE = 0.030	Pls Sta 100+44.896 Δ = 1°35'56.6" (RT) L = 48.671 T = 24.337 R = 1,750.000 SE = 0.030	Pls Sta 100+77.397 Os = 0°24'03.9" Ls = 24.500 LT = 16.333 ST = 8.167
---	---	---	---	---	--	--	---

**-L- REV (LT) CURVE DATA**

Pls Sta 97+68.068 Os = 1°22'07.4" Ls = 43.000 LT = 28.668 ST = 14.334	Pls Sta 98+20.681 Δ = 4°52'16.4" (RT) L = 76.517 T = 38.281 R = 900.000 SE = 0.052	Pls Sta 99+48.163 Δ = 5°50'19.9" (LT) L = 178.338 T = 89.246 R = 1,750.000 SE = 0.030	Pls Sta 100+45.422 Os = 0°24'03.9" Ls = 24.500 LT = 16.333 ST = 8.167
---	---	--	---

**-L- REV (RT) CURVE DATA**

Pls Sta 97+68.068 Os = 1°22'07.4" Ls = 43.000 LT = 28.668 ST = 14.334	Pls Sta 98+20.681 Δ = 4°52'16.4" (RT) L = 76.517 T = 38.281 R = 900.000 SE = 0.052	Pls Sta 99+48.163 Δ = 5°50'19.9" (LT) L = 178.338 T = 89.246 R = 1,750.000 SE = 0.030	Pls Sta 100+45.422 Os = 0°24'03.9" Ls = 24.500 LT = 16.333 ST = 8.167
---	---	--	---



**DATUM DESCRIPTION**

THE LOCALIZED COORDINATE SYSTEM DEVELOPED FOR THIS PROJECT IS BASED ON THE STATE PLANE COORDINATES ESTABLISHED BY NCGS FOR MONUMENT "CECIL"

WITH NAD 83 STATE PLANE GRID COORDINATES OF  
NORTHING: 1025271910(±) EASTING: 635512530(±)

THE AVERAGE COMBINED GRID FACTOR USED ON THIS PROJECT (GROUND TO GRID) IS: .999920683

THE N.C. LAMBERT GRID BEARING  
LOCALIZED HORIZONTAL GROUND DISTANCE FROM "CECIL" TO -L- STATION 96+62.220 IS  
N 34 DEGREES 10 MINUTES 31.4 SECONDS W, 7647.4 m

ALL LINEAR DIMENSIONS ARE LOCALIZED HORIZONTAL DISTANCES  
VERTICAL DATUM USED IS NGVD 29

**DRIVEWAY NOTES:**

- ALL PROP. DRIVEWAY RADII 3.0m UNLESS OTHERWISE SHOWN.
- PROP. DRIVEWAY WIDTHS AT END OF RADII SHALL BE 4.9m MIN. UNLESS OTHERWISE SHOWN. TAPER DRIVEWAY TO EXISTING DRIVEWAY WIDTH.

SEE SHEET 32 FOR -L- REV. PROFILE

28 OCT 2009 10:53 AM c:\projects\2562c\roadway\p\04-2562c-sb4.dwg  
 d:\REV\LIN\28 OCT 2009 10:53 AM c:\projects\2562c\roadway\p\04-2562c-sb4.dwg  
 04/25/09