



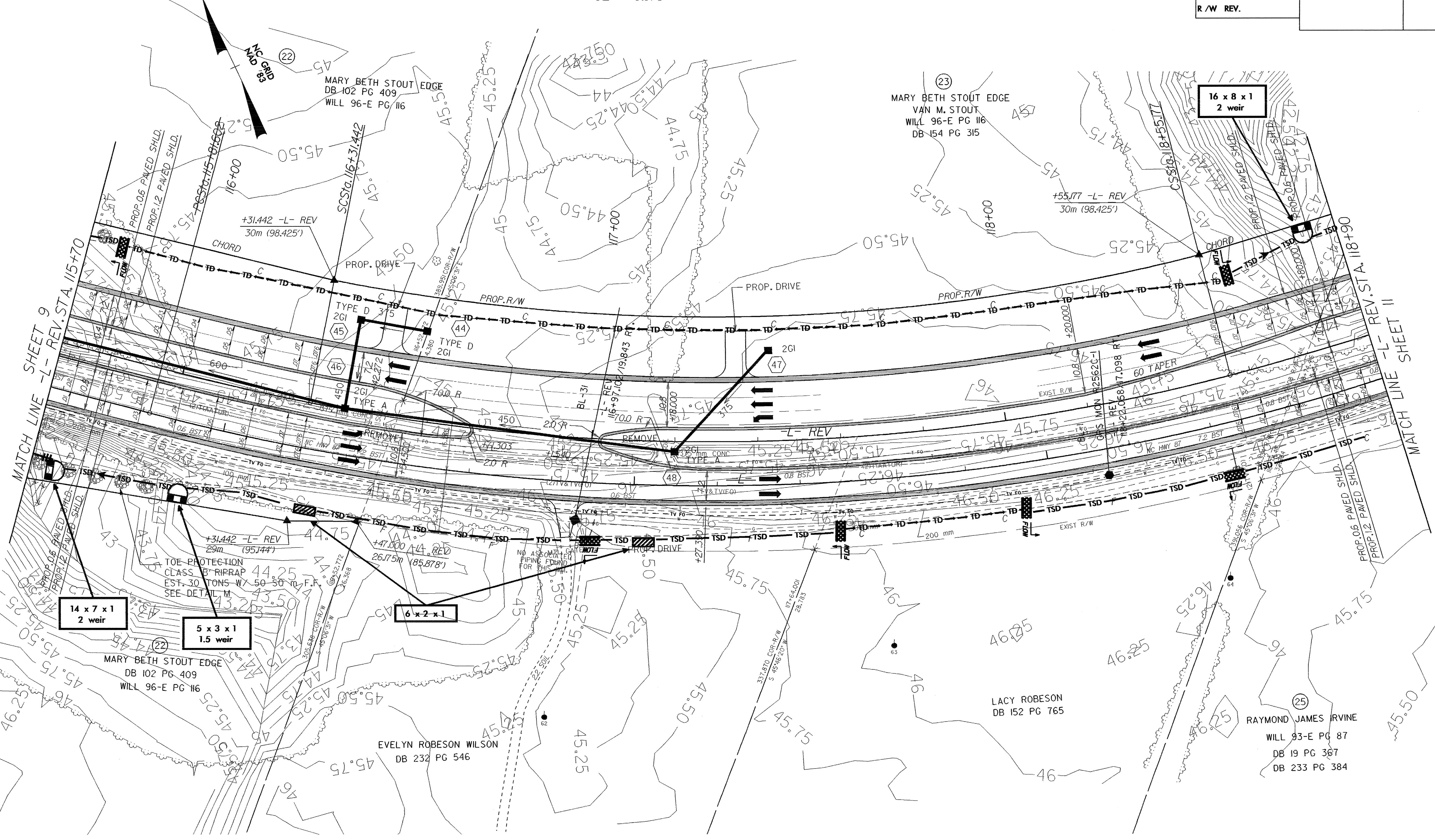
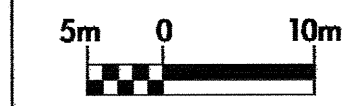
PROJECT REFERENCE NO. R-2562C		SHEET NO. EC-9/CONST.10
R/W SHEET NO.		
ROADWAY DESIGN ENGINEER	HYDRAULICS ENGINEER	
CONST.REV.		
R/W REV.		

CLEARING AND GRUBBING
EROSION CONTROL FOR
CONSTRUCTION SHEET 10

NOTE:
PLACE TEMPORARY ROCK SEDIMENT DAMS TYPE-B
AND TEMPORARY ROCK SILT CHECKS TYPE-A AT
DRAINAGE OUTLETS.

-L- REV CURVE DATA

Pls Sta 116+09.785	Pl Sta 117+45.214	Pls Sta 118+76.852
$\theta_s = 3^\circ 43' 27.2''$	$\Delta = 25^\circ 38' 17.2''$ (LT)	$\theta_s = 3^\circ 43' 27.2''$
$L_s = 65.000$	$L = 223.735$	$L_s = 65.000$
$LT = 43.343$	$T = 113.772$	$LT = 43.343$
$ST = 21.675$	$R = 500.000$	$ST = 21.675$
	$SE = 0.076$	



- DRIVEWAY NOTES:**
1. ALL PROP. DRIVEWAY RADII 3.0m UNLESS OTHERWISE SHOWN.
 2. PROP. DRIVEWAY WIDTHS AT END OF RADII SHALL BE 4.9m MIN. UNLESS OTHERWISE SHOWN. TAPER DRIVEWAY TO EXISTING DRIVEWAY WIDTH.

SEE SHEET 35 FOR -L- REV. PROFILE

08/25/23
10.psh
df-REV