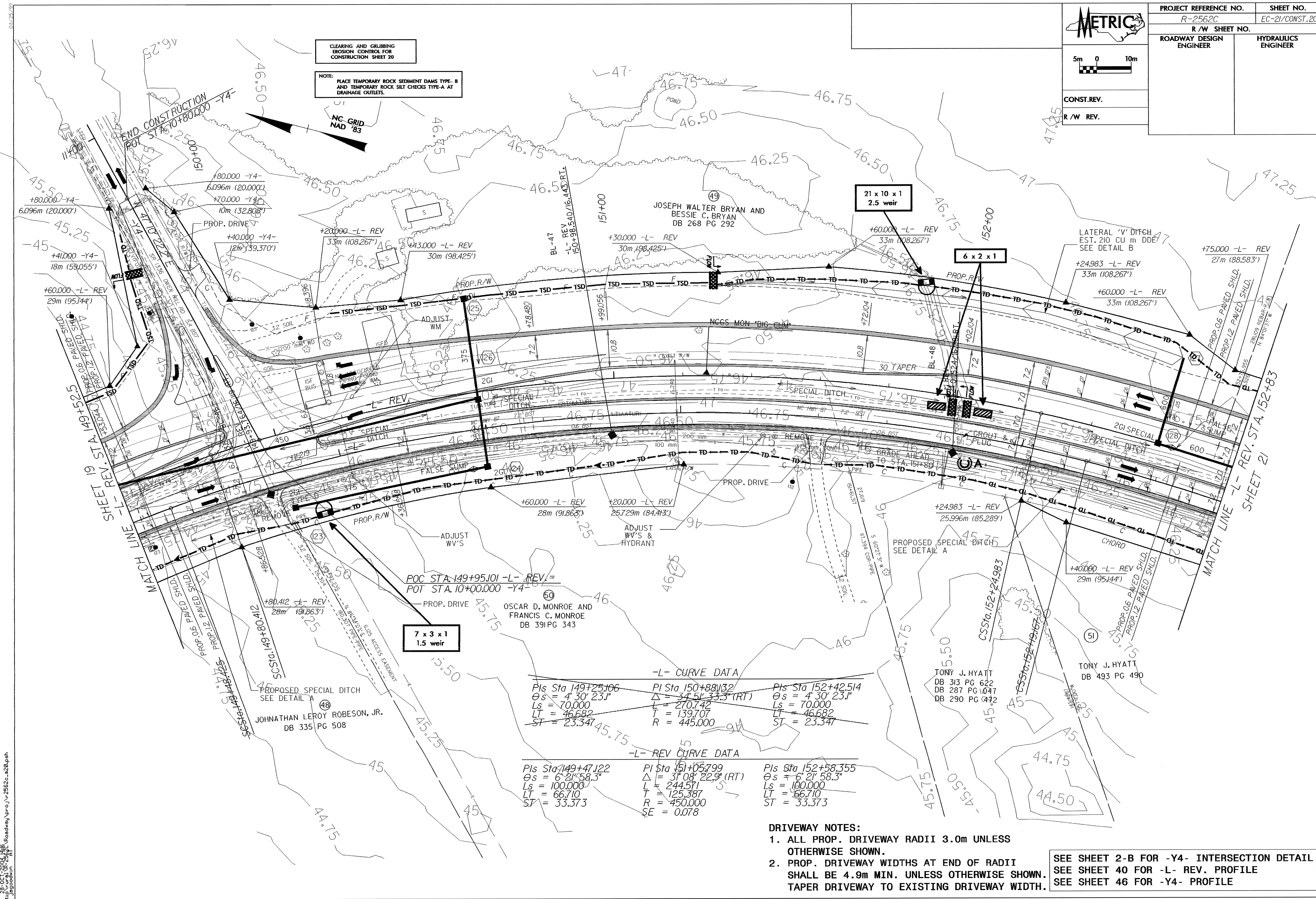


PROJECT REFERENCE NO. R-2562C	SHEET NO. EC-21/CONST.20
R/W SHEET NO.	
ROADWAY DESIGN ENGINEER	HYDRAULICS ENGINEER

5m 0 10m
CONST. REV.
R/W REV.



- DRIVEWAY NOTES:**
- ALL PROP. DRIVEWAY RADII 3.0m UNLESS OTHERWISE SHOWN.
 - PROP. DRIVEWAY WIDTHS AT END OF RADII SHALL BE 4.9m MIN. UNLESS OTHERWISE SHOWN. TAPER DRIVEWAY TO EXISTING DRIVEWAY WIDTH.

SEE SHEET 2-B FOR -Y4- INTERSECTION DETAIL
SEE SHEET 40 FOR -L- REV. PROFILE
SEE SHEET 46 FOR -Y4- PROFILE

03/25/99
dl:\REV\11-28-OCT-2004\1916_Roadway\proj\1-2562c.e20.pph