
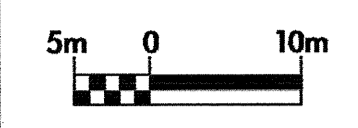
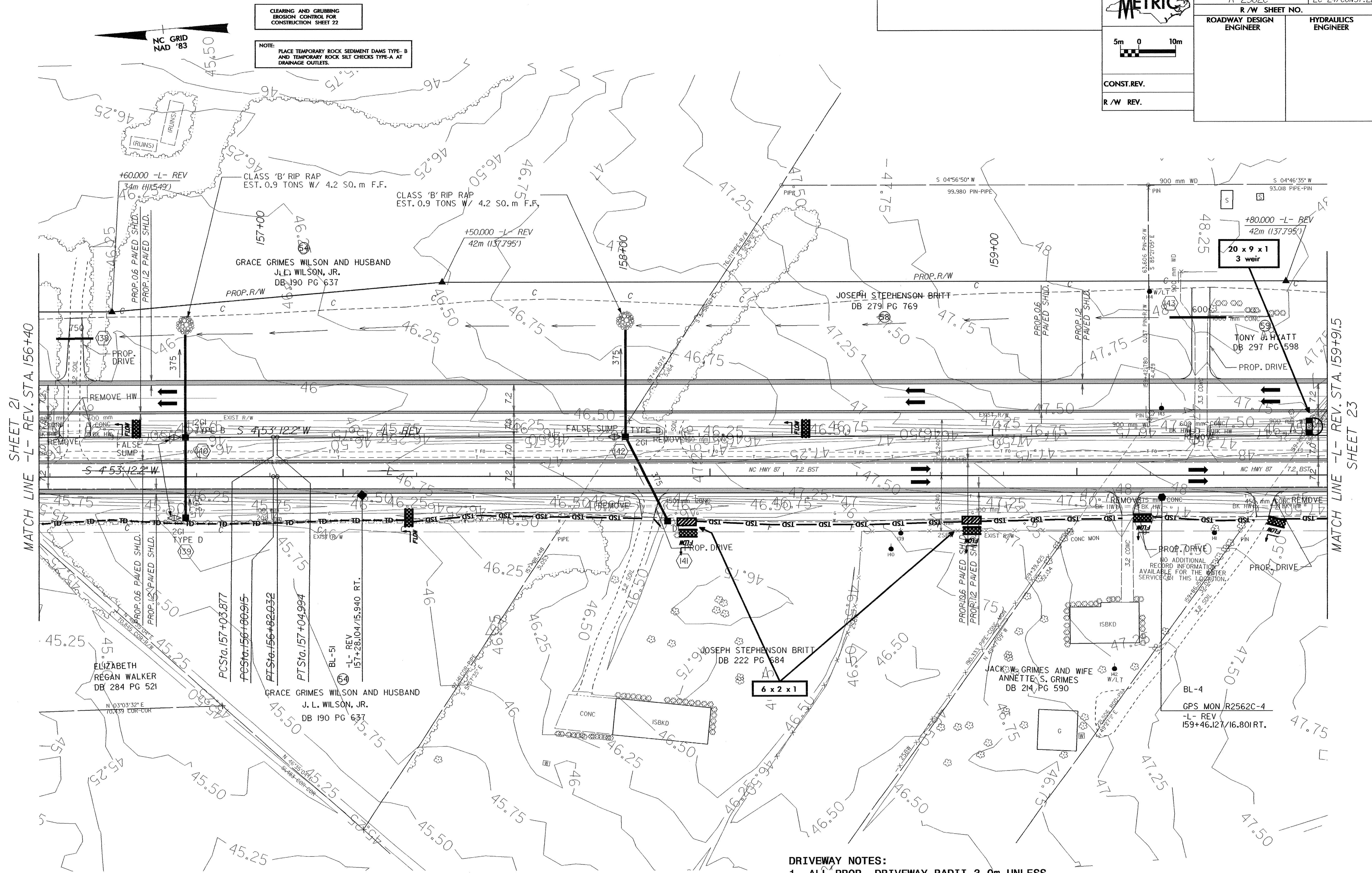


08/25/99

	PROJECT REFERENCE NO.	SHEET NO.
	R-2562C	EC-24/CONST.22
	R /W SHEET NO.	HYDRAULICS ENGINEER
	ROADWAY DESIGN ENGINEER	
CONST. REV.		
R /W REV.		

SHEET 21
MATCH LINE -L- REV. STA. 156+40

MATCH LINE -L- REV. STA. 159+91.5
SHEET 23



CLEARING AND GRUBBING
EROSION CONTROL FOR
CONSTRUCTION SHEET 22

NOTE:
PLACE TEMPORARY ROCK SEDIMENT DAMS TYPE-B
AND TEMPORARY ROCK SILT CHECKS TYPE-A AT
DRAINAGE OUTLETS.

+60.000 -L- REV
34m (1115.49')

CLASS 'B' RIP RAP
EST. 0.9 TONS W/ 4.2 SO. m F.F.

CLASS 'B' RIP RAP
EST. 0.9 TONS W/ 4.2 SO. m F.F.

+50.000 -L- REV
42m (137.795')

GRACE GRIMES WILSON AND HUSBAND
J.L. WILSON, JR.
DB 190 PG 637

JOSEPH STEPHENSON BRITT
DB 279 PG 769

+80.000 -L- REV
42m (137.795')

20 x 9 x 1
3 weir

TONY J. PIATT
DB 297 PG 598

ELIZABETH
REGAN WALKER
DB 284 PG 521

GRACE GRIMES WILSON AND HUSBAND
J.L. WILSON, JR.
DB 190 PG 637

JOSEPH STEPHENSON BRITT
DB 222 PG 684

JACK W. GRIMES AND WIFE
ANNETTE S. GRIMES
DB 214 PG 590

BL-4
GPS MON R2562C-4
-L- REV
159+46.127/16.801 RT.

- DRIVEWAY NOTES:**
1. ALL PROP. DRIVEWAY RADII 3.0m UNLESS OTHERWISE SHOWN.
 2. PROP. DRIVEWAY WIDTHS AT END OF RADII SHALL BE 4.9m MIN. UNLESS OTHERWISE SHOWN. TAPER DRIVEWAY TO EXISTING DRIVEWAY WIDTH.

SEE SHEET 41 FOR -L- REV. PROFILE

DATE: 28-OCT-2004 15:01
PROJECT: R2562C-4
DRAWING: R2562C-4-22
DRAWN: J. WILSON