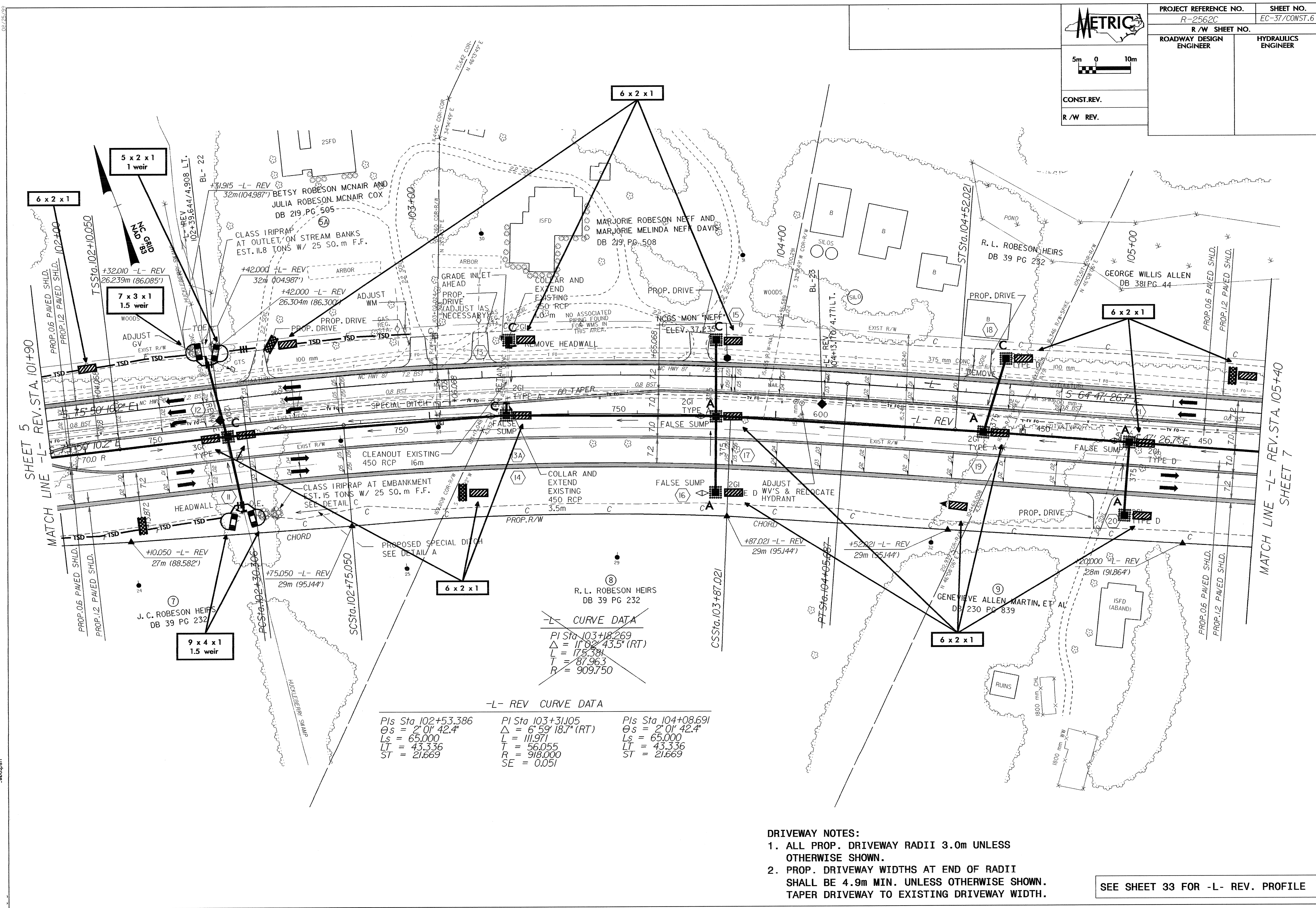




CONST. REV.
R/W REV.

PROJECT REFERENCE NO.	SHEET NO.
R-2562C	EC-37/CONST.6
R/W SHEET NO.	
ROADWAY DESIGN ENGINEER	HYDRAULICS ENGINEER



-L- CURVE DATA

PI Sta 103+18.269	$\Delta = 11^{\circ}02'43.5"$ (RT)	L = 175.381	T = 87.963	R = 909.750
-------------------	------------------------------------	-------------	------------	-------------

-L- REV CURVE DATA

PIs Sta 102+53.386	PI Sta 103+31.05	PIs Sta 104+08.691
$\theta_s = 2^{\circ}01'42.4"$	$\Delta = 6^{\circ}59'18.7"$ (RT)	$\theta_s = 2^{\circ}01'42.4"$
Ls = 65.000	L = 111.971	Ls = 65.000
LT = 43.336	T = 56.055	LT = 43.336
ST = 21.669	R = 918.000	ST = 21.669
	SE = 0.051	