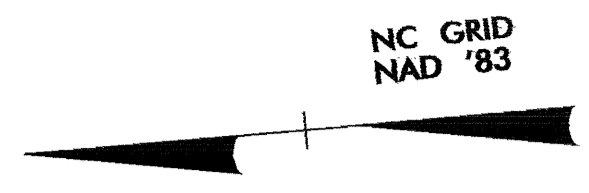
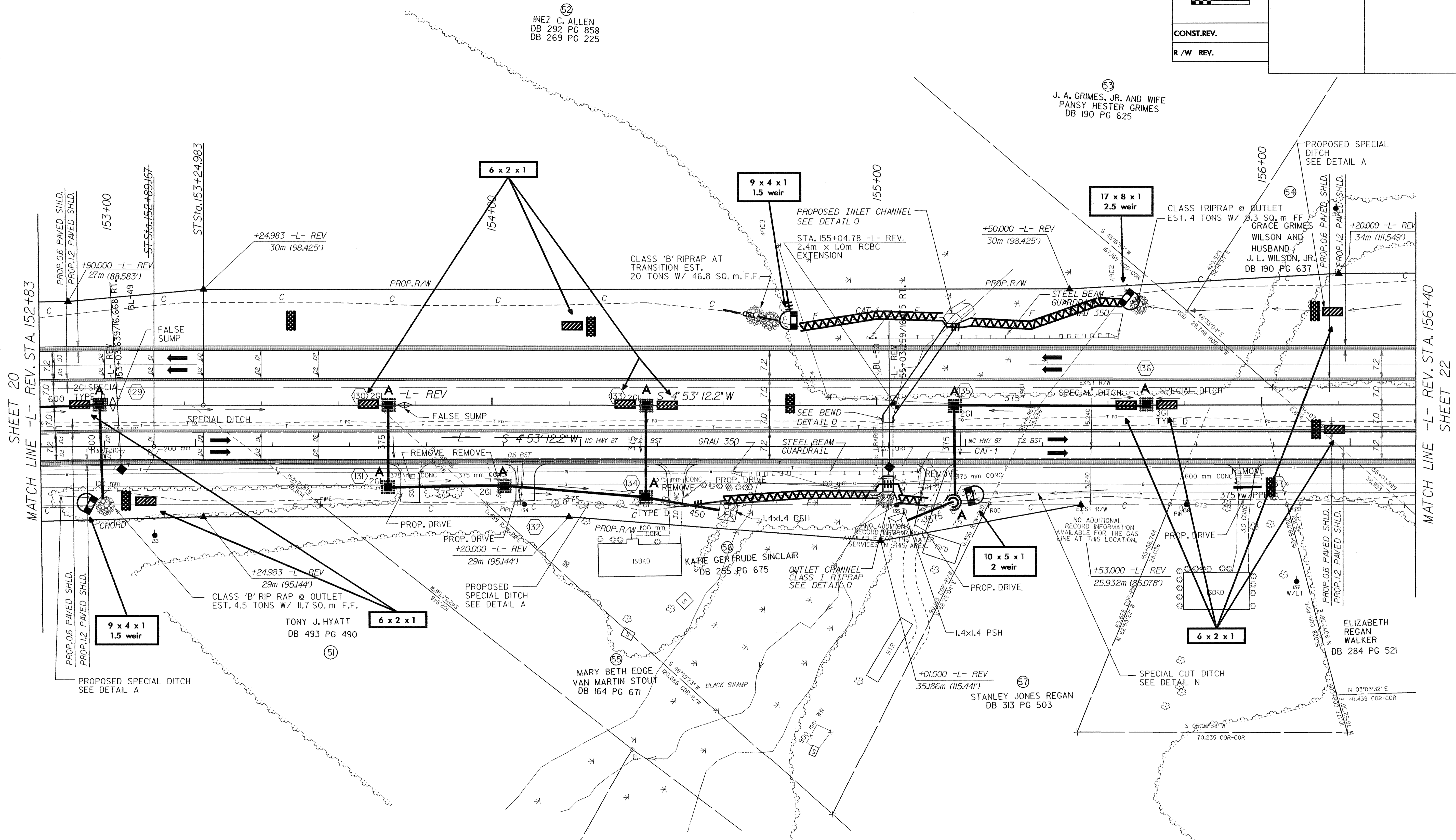


d:\REV\w\proj\2562c\Roadway\proj\2562c_s21.psh
28-OCT-2009 15:58
2562c.pwg
2562c.dwg
2562c.s21



	PROJECT REFERENCE NO.	SHEET NO.
	R-2562C	EC-53/CONST.21
R/W SHEET NO.		
ROADWAY DESIGN ENGINEER	HYDRAULICS ENGINEER	
CONST. REV.		
R/W REV.		



- DRIVEWAY NOTES:**
- 1. ALL PROP. DRIVEWAY RADII 3.0m UNLESS OTHERWISE SHOWN.
 - 2. PROP. DRIVEWAY WIDTHS AT END OF RADII SHALL BE 4.9m MIN. UNLESS OTHERWISE SHOWN. TAPER DRIVEWAY TO EXISTING DRIVEWAY WIDTH.

SEE SHEET 40 FOR -L- REV. PROFILE

SHEET 20
MATCH LINE -L- REV. STA. 152+83

MATCH LINE -L- REV. STA. 156+40
SHEET 22