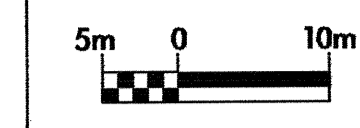
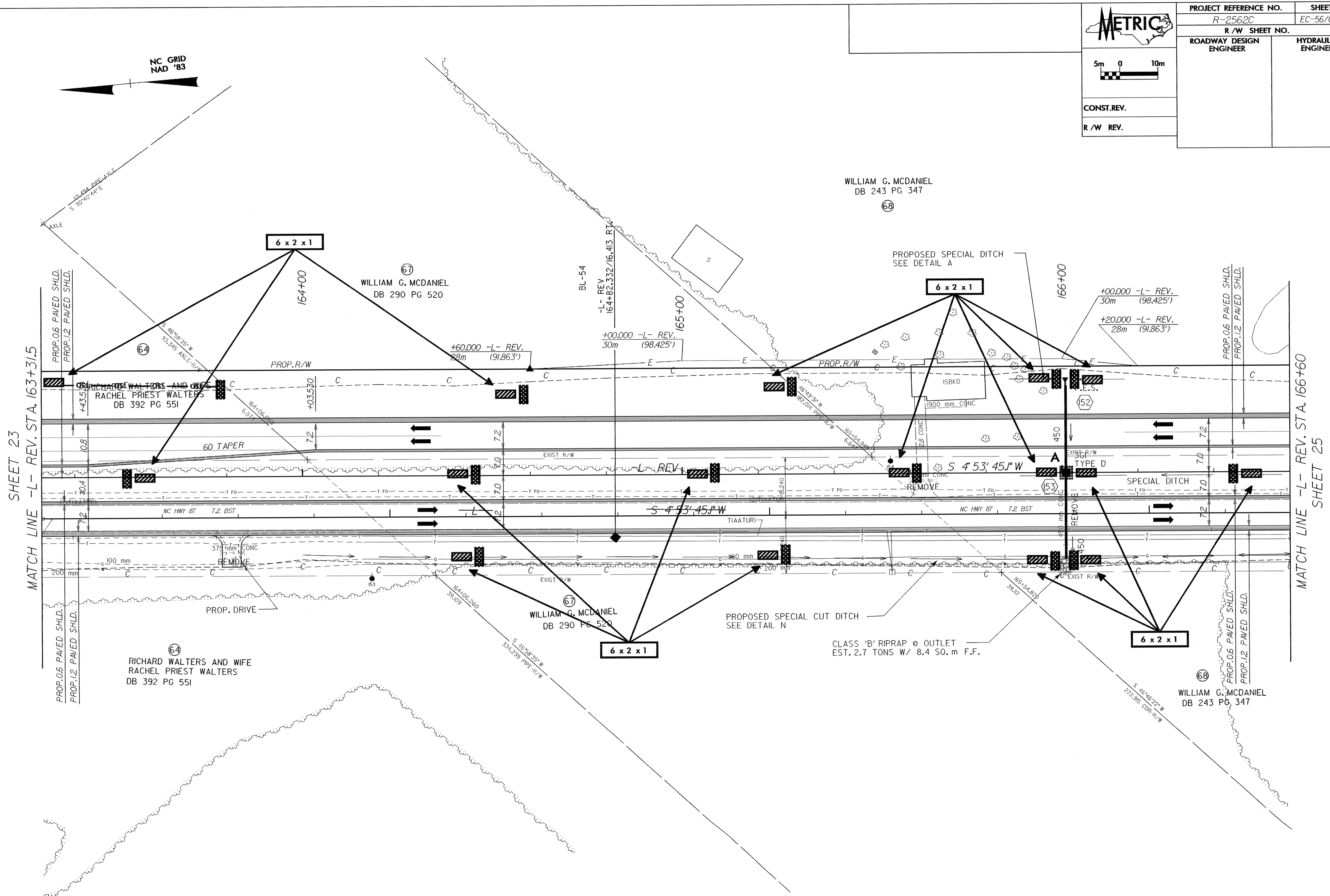




|                                  |                              |
|----------------------------------|------------------------------|
| PROJECT REFERENCE NO.<br>R-2562C | SHEET NO.<br>EC-56/CONST. 24 |
| R/W SHEET NO.                    |                              |
| ROADWAY DESIGN ENGINEER          | HYDRAULICS ENGINEER          |
| CONST. REV.                      |                              |
| R/W REV.                         |                              |



28-OCT-2004 15:24 d:\REU\1\p\ur\1\2562C\Roadway\proj\2562c.a24.plt



- DRIVEWAY NOTES:**
1. ALL PROP. DRIVEWAY RADII 3.0m UNLESS OTHERWISE SHOWN.
  2. PROP. DRIVEWAY WIDTHS AT END OF RADII SHALL BE 4.9m MIN. UNLESS OTHERWISE SHOWN. TAPER DRIVEWAY TO EXISTING DRIVEWAY WIDTH.

SEE SHEET 42 FOR -L- REV. PROFILE

SHEET 23  
MATCH LINE -L- REV. STA. 163+31.5

MATCH LINE -L- REV. STA. 166+60  
SHEET 25