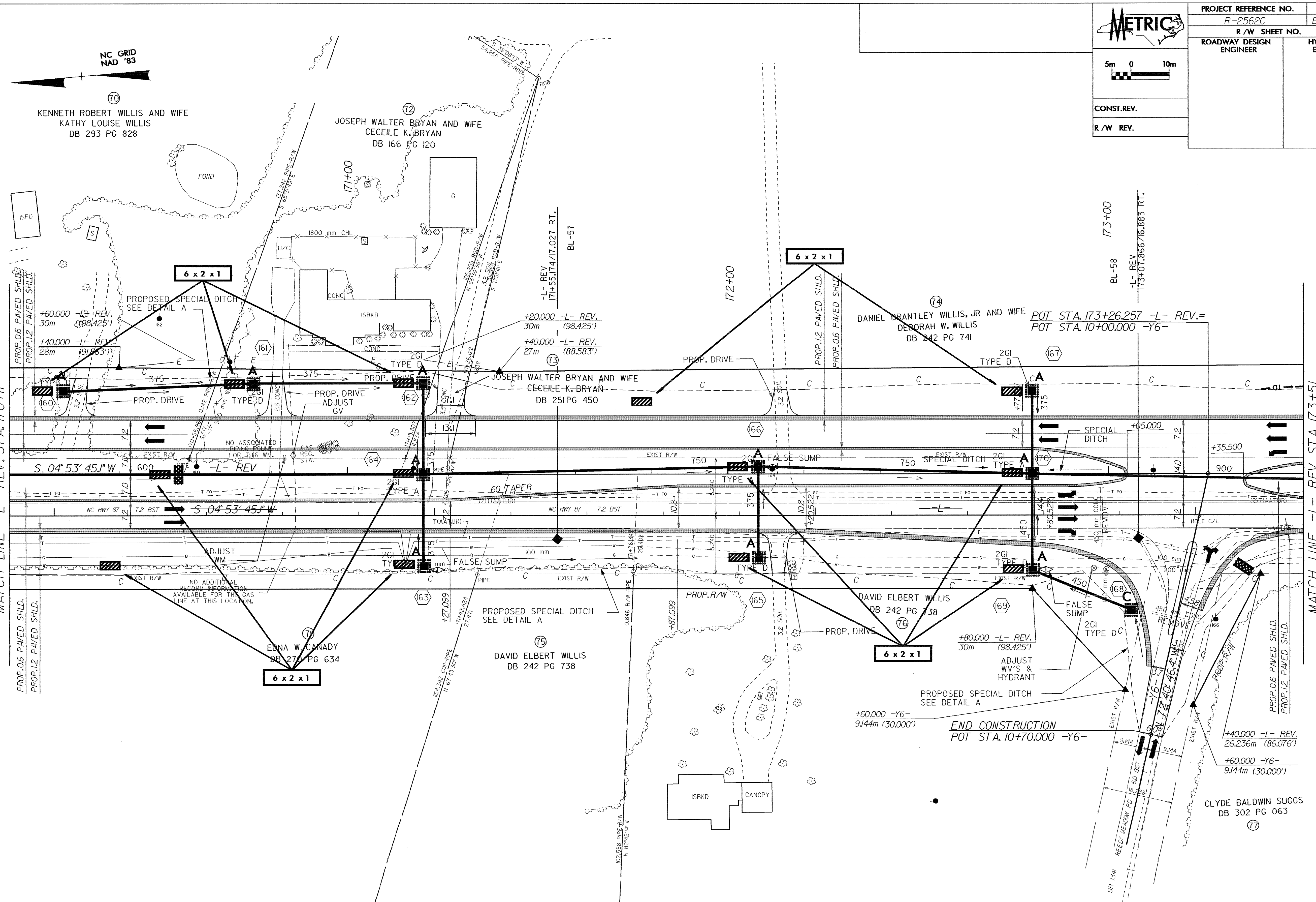


08/25/09
 d:\REV\28-OCT-2009\11-2562\Roadway\pno\11-2562c.e26.upth
 11-2562c.dwg
 11-2562c.dwg

SHEET 25
 MATCH LINE -L- REV. STA. 170+11



 5m 0 10m CONST. REV. R/W REV.	PROJECT REFERENCE NO.	SHEET NO.
	R-2562C	EC-58/CONST. 26
	R/W SHEET NO.	
	ROADWAY DESIGN ENGINEER	HYDRAULICS ENGINEER

- DRIVEWAY NOTES:**
- ALL PROP. DRIVEWAY RADII 3.0m UNLESS OTHERWISE SHOWN.
 - PROP. DRIVEWAY WIDTHS AT END OF RADII SHALL BE 4.9m MIN. UNLESS OTHERWISE SHOWN. TAPER DRIVEWAY TO EXISTING DRIVEWAY WIDTH.
- SEE SHEET 2-B FOR -Y6- INTERSECTION DETAIL
 SEE SHEET 43 FOR -L- REV. PROFILE
 SEE SHEET 47 FOR -Y6- PROFILE