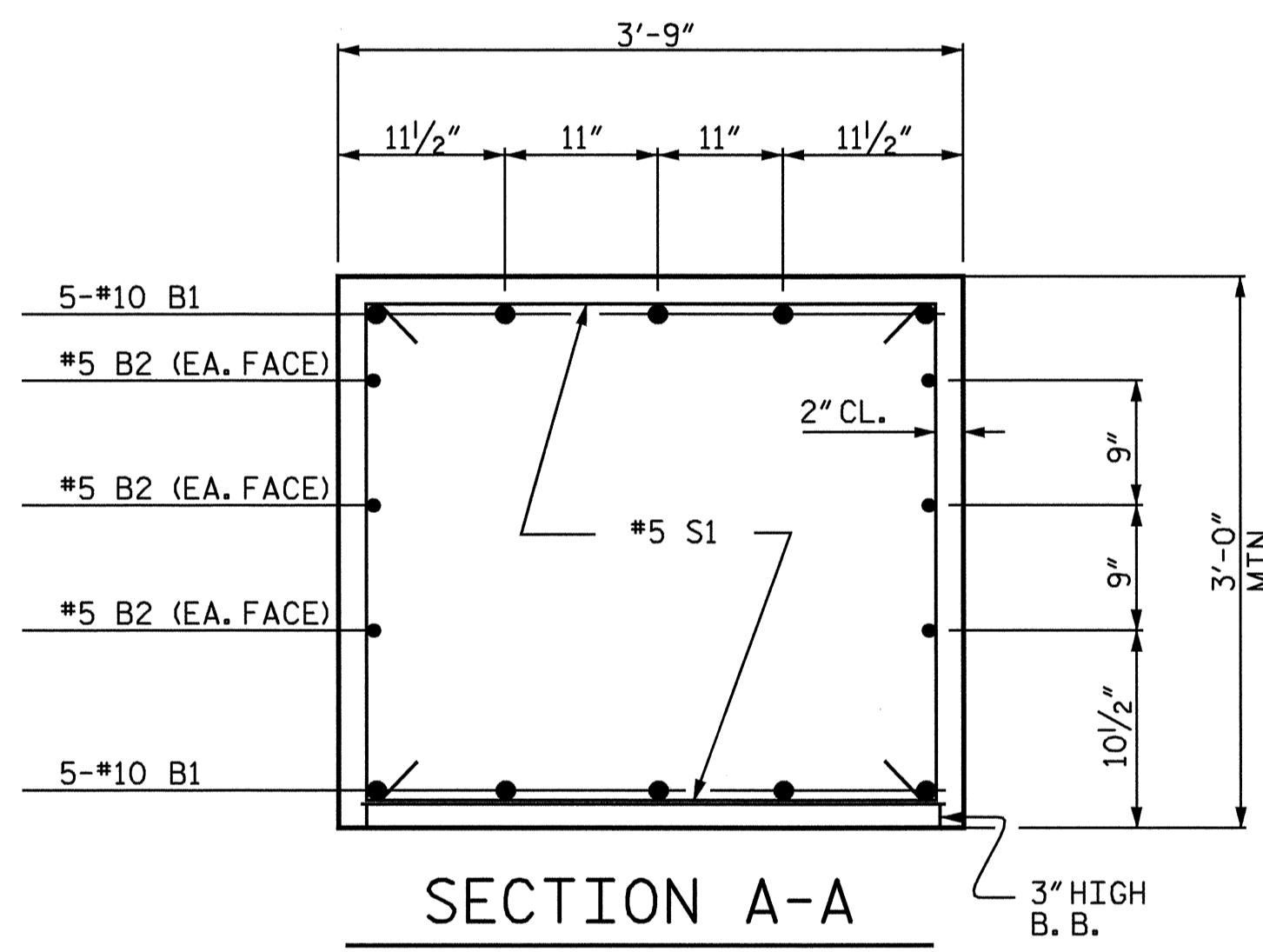
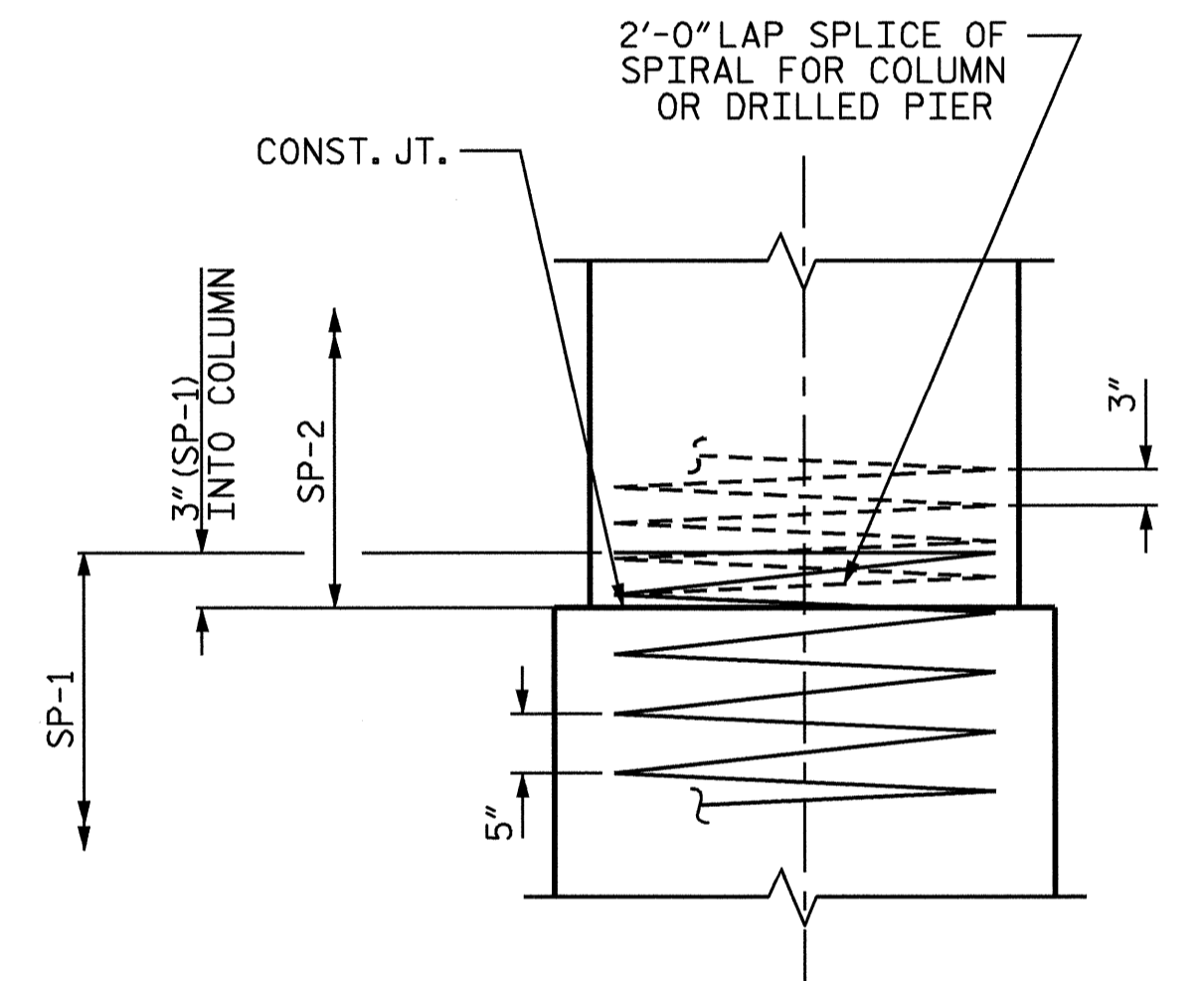


**PLAN OF DRILLED PIERS**

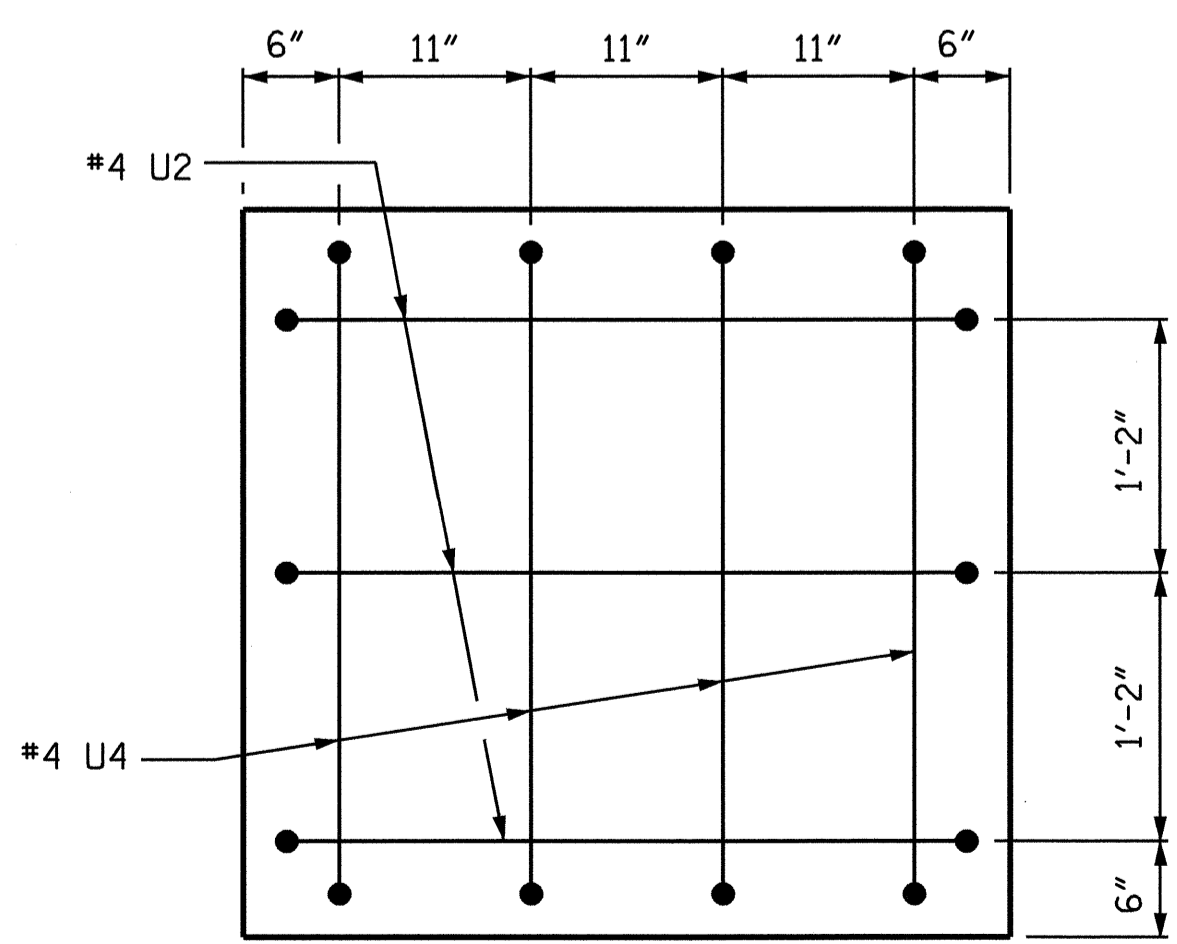
REINFORCING STEEL AND DIMENSIONS ARE TYPICAL FOR ALL DRILLED PIERS & COLUMNS



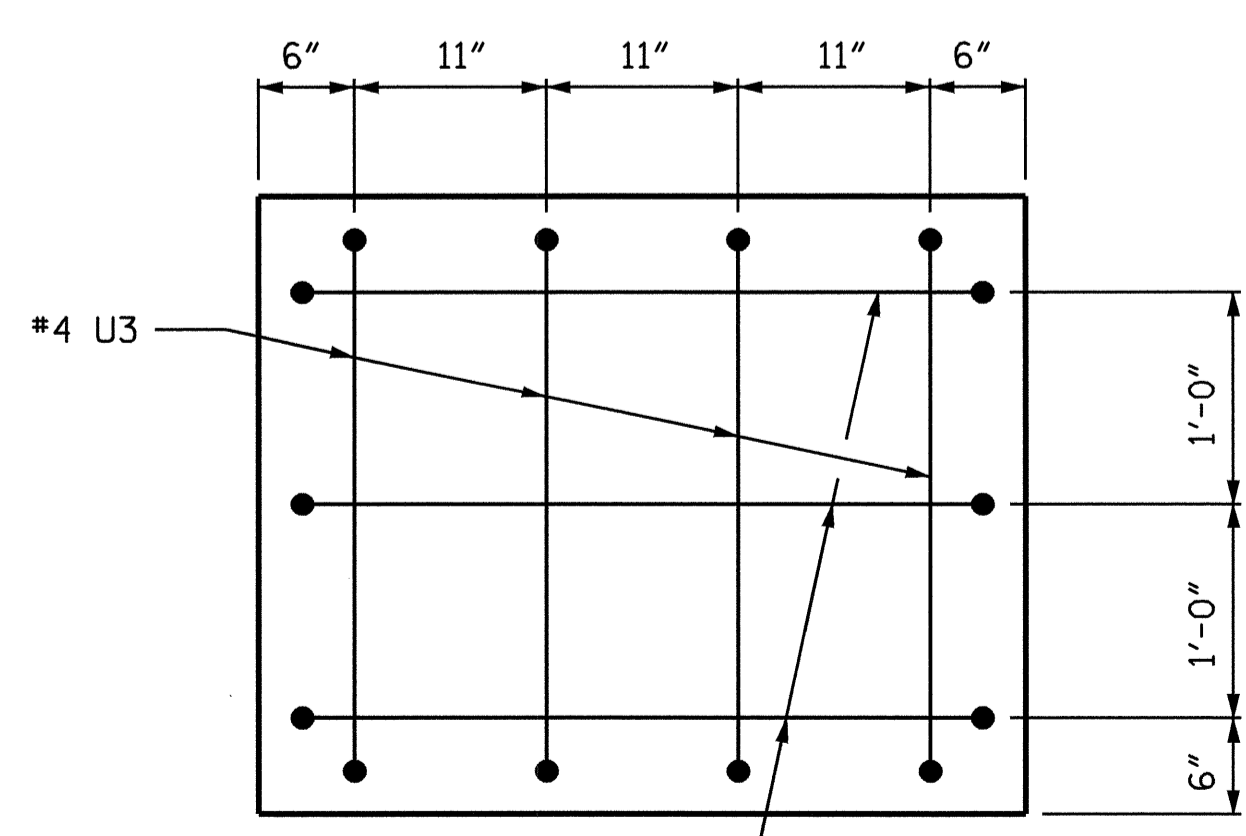
**SECTION A-A**



**CONSTRUCTION JOINT DETAIL**

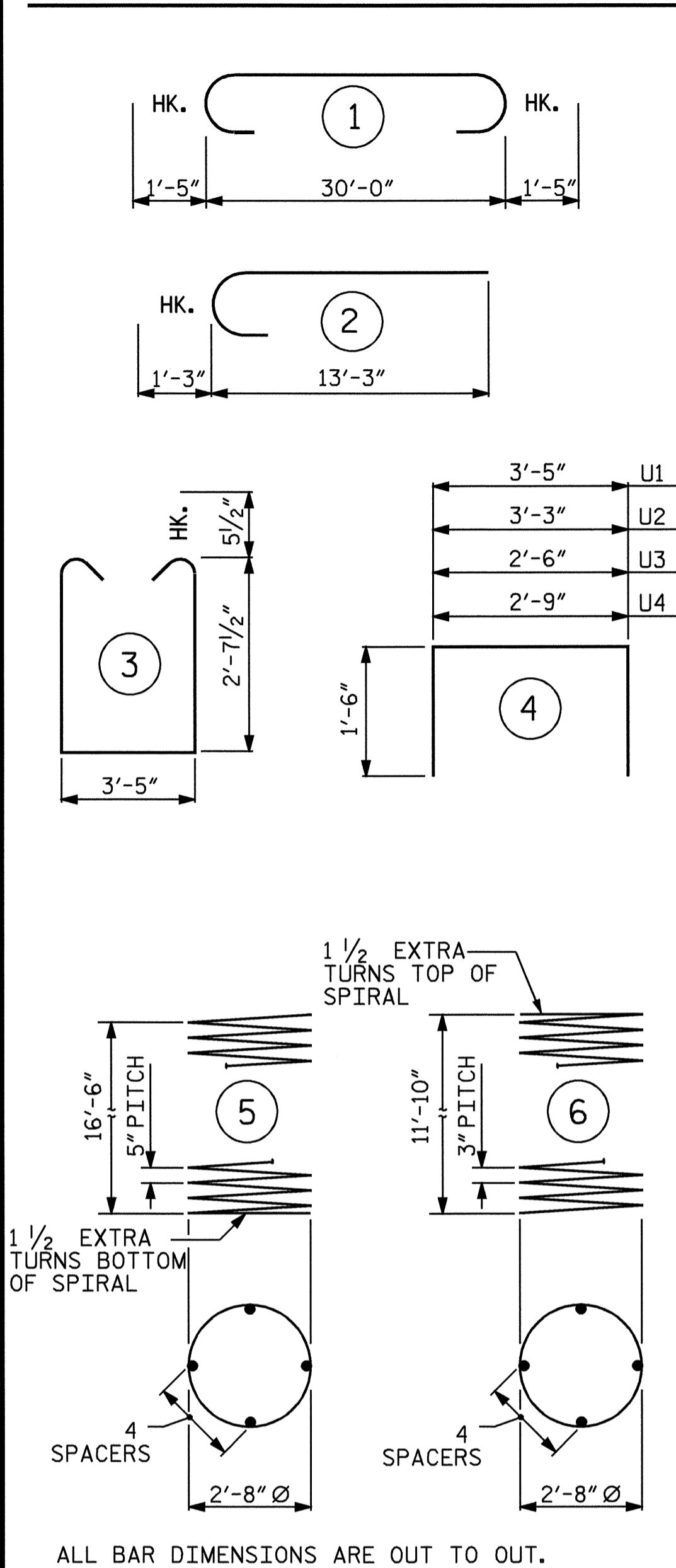


**VIEW X-X**



**VIEW Y-Y**

**BAR TYPES**



**BILL OF MATERIAL**

BENT No. 2					
BAR	NO.	SIZE	TYPE	LENGTH	WEIGHT
B1	10	10	1	32'-10"	1413
B2	6	5	STR	30'-2"	189
B3	5	4	STR	12'-6"	42
S1	45	5	3	9'-7"	450
U1	35	4	4	6'-5"	150
U2	6	4	4	6'-3"	25
U3	3	4	4	5'-6"	11
U4	3	4	4	5'-9"	12
V1	24	9	2	14'-6"	1183
M1	24	9	STR	24'-3"	1979
REINFORCING STEEL				LBS.	5454
SP-1	2	**	5	345'-6"	721
SP-2	2	*	6	404'-4"	540
SPIRAL COLUMN				REINFORCING STEEL	LBS.
				1261	
* THE SP-2 SPIRAL REINFORCING STEEL SHALL BE W20 OR D-20 COLD DRAWN WIRE OR #4 PLAIN OR DEFORMED BAR.					
** THE SP-1 SPIRAL REINFORCING STEEL SHALL BE W31 OR D-31 COLD DRAWN WIRE OR #5 PLAIN OR DEFORMED BAR.					
CLASS A CONCRETE BREAKDOWN :					
POUR #2 (COLUMNS)				6.0 C. Y.	
POUR #3 (CAP)				13.9 C. Y.	
TOTAL				19.9 C. Y.	
<b>DRILLED PIER QUANTITIES</b>					
DRILLED PIER CONCRETE					
POUR #1 (DRILLED PIERS)				12.1 C. Y.	
3'-6" Ø DRILLED PIERS NOT IN SOIL				19.00 LIN. FT.	
3'-6" Ø DRILLED PIERS IN SOIL				15.00 LIN. FT.	
PERMANENT STEEL CASING FOR 3'-6" Ø DRILLED PIER				20.00 LIN. FT.	
CSL TUBES				156.00 LIN. FT.	

PROJECT NO. B-3403  
ALLEGHANY COUNTY  
 STATION: 15+17.50 -L-

SHEET 2 OF 2

STATE OF NORTH CAROLINA  
 DEPARTMENT OF TRANSPORTATION  
 RALEIGH

SUBSTRUCTURE  
 BENT No. 2

REVISIONS						SHEET NO.	
NO.	BY:	DATE:	NO.	BY:	DATE:	S-24	
1			3			TOTAL SHEETS	34
2			4				



DRAWN BY : R. G. EMERSON DATE : 02/04  
 CHECKED BY : MIKE BRITT DATE : 02/04