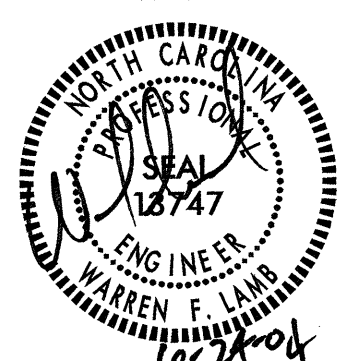
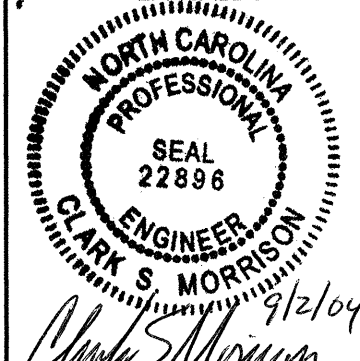
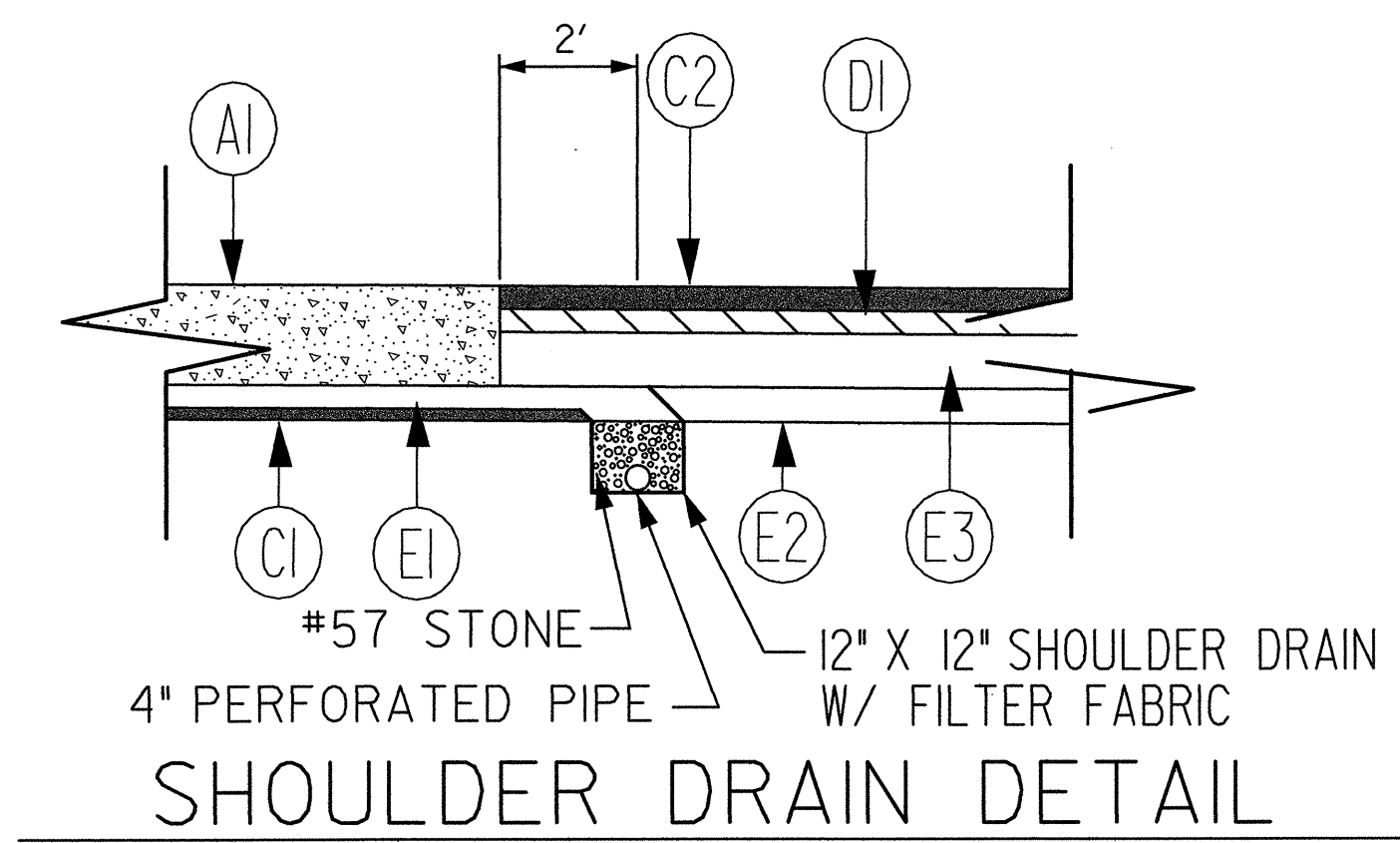
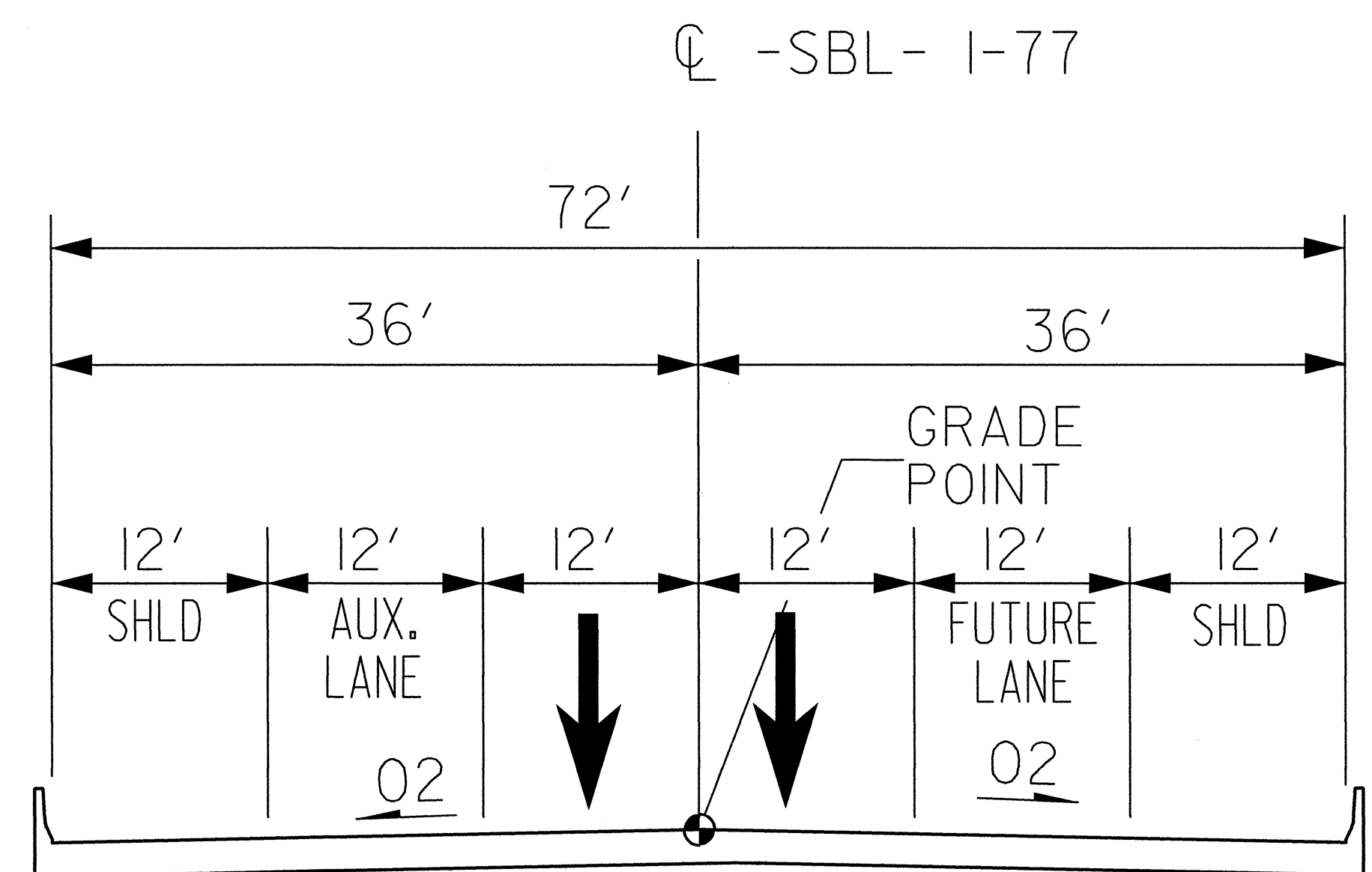


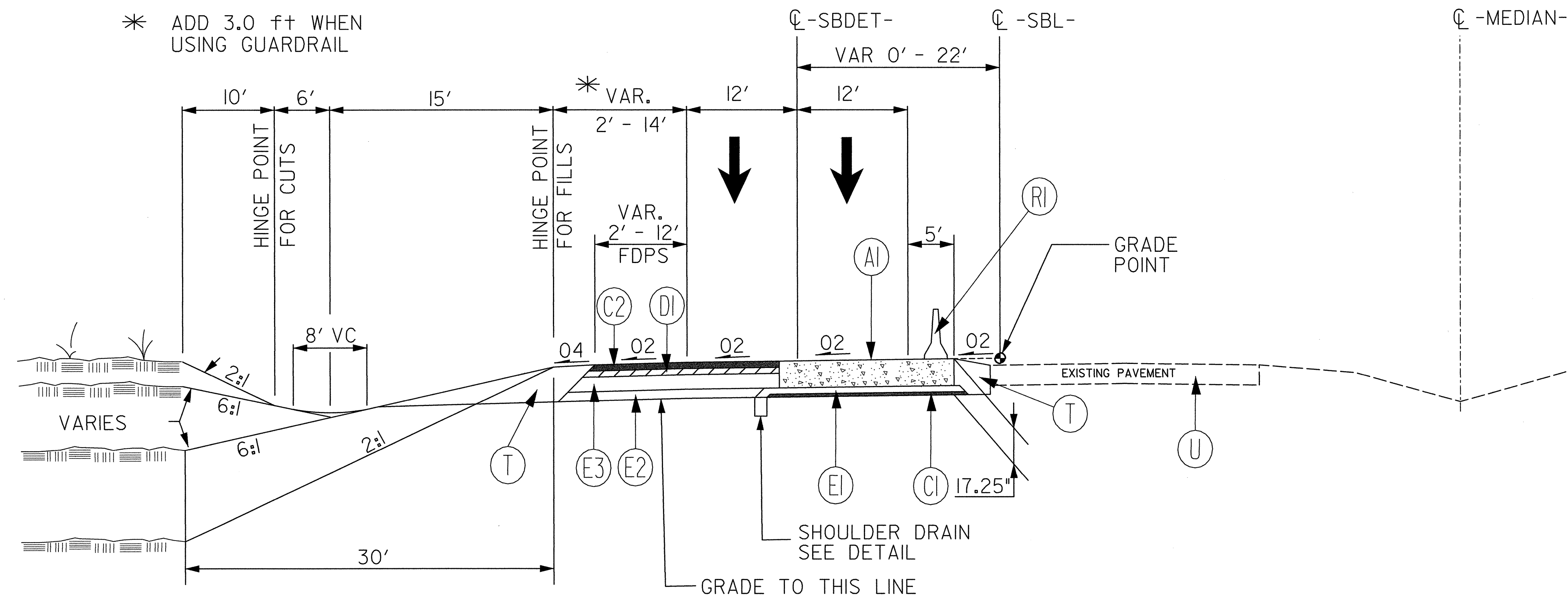
6/22/99

PROJECT REFERENCE NO. 1-4025A	SHEET NO. 2-A
ROADWAY DESIGN ENGINEER 	PAVEMENT DESIGN ENGINEER 



OUTSIDE LOCATIONS		INSIDE LOCATIONS	
ROADWAY	STA - STA	ROADWAY	STA - STA
-SBDET-	12+58 - 24+58	-SBL-	13+50 - 24+92
-SBDET-	33+40 - 39+40	-SBL-	33+50 - 39+50

**TYPICAL SECTION ON STRUCTURE**  
-SBL- STA. 25+15.00 TO STA. 32+75.00



**TYPICAL SECTION NO. 3**  
**I-77 SB DETOUR**  
-SBDET- STA. 10+41.33 TO BRIDGE STA. 25+15.56  
BRIDGE STA. 32+75.56 TO -SBDET- STA. 45+76.25

PAVEMENT SCHEDULE	
A1	13" PORTLAND CEMENT CONCRETE PAVEMENT.
C1	PROP. APPROX. 1 1/4" ASPHALT CONCRETE SURFACE COURSE, TYPE S9.5B, AT AN AVERAGE RATE OF 140 LBS. PER SQ. YD.
C2	PROP. APPROX. 3" ASPHALT CONCRETE SURFACE COURSE, TYPE S9.5C, AT AN AVERAGE RATE OF 168 LBS. PER SQ. YD. IN EACH OF TWO LAYERS.
D1	PROP. APPROX. 3" ASPHALT CONCRETE INTERMEDIATE COURSE, TYPE I19.0C, AT AN AVERAGE RATE OF 342 LBS. PER SQ. YD.
E1	PROP. APPROX. 3" ASPHALT CONCRETE BASE COURSE, TYPE B25.0B, AT AN AVERAGE RATE OF 342 LBS. PER SQ. YD.
E2	PROP. APPROX. 4 1/4" ASPHALT CONCRETE BASE COURSE, TYPE B25.0C, AT AN AVERAGE RATE OF 485 LBS. PER SQ. YD.
E3	PROP. APPROX. 7" ASPHALT CONCRETE BASE COURSE, TYPE B25.0C, AT AN AVERAGE RATE OF 399 LBS. PER SQ. YD. IN EACH OF TWO LAYERS.
R1	TEMP. CONCRETE BARRIER
R2	PROP. SHOULDER BERM GUTTER.
T	EARTH MATERIAL.
U	EXISTING PAVEMENT

NOTE: ALL PAVEMENT EDGE SLOPES ARE 1:1 UNLESS OTHERWISE NOTED.

06/18/2004 11:40:25a-r-dj-tyfp.dgn