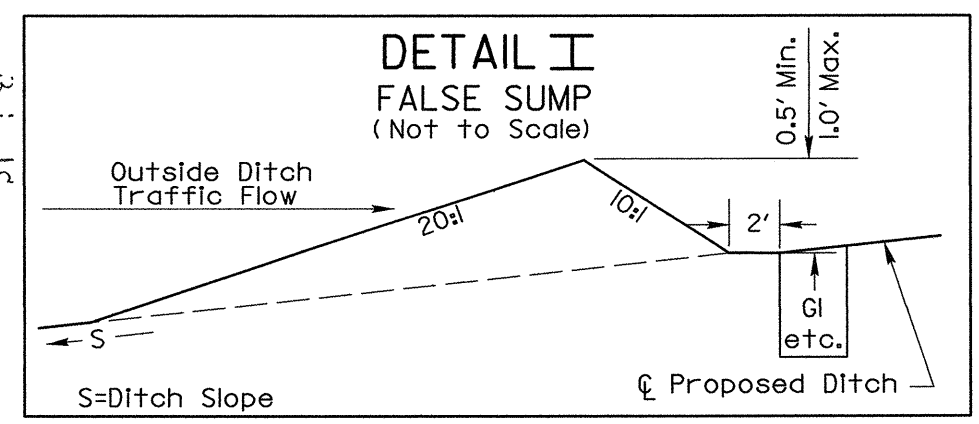
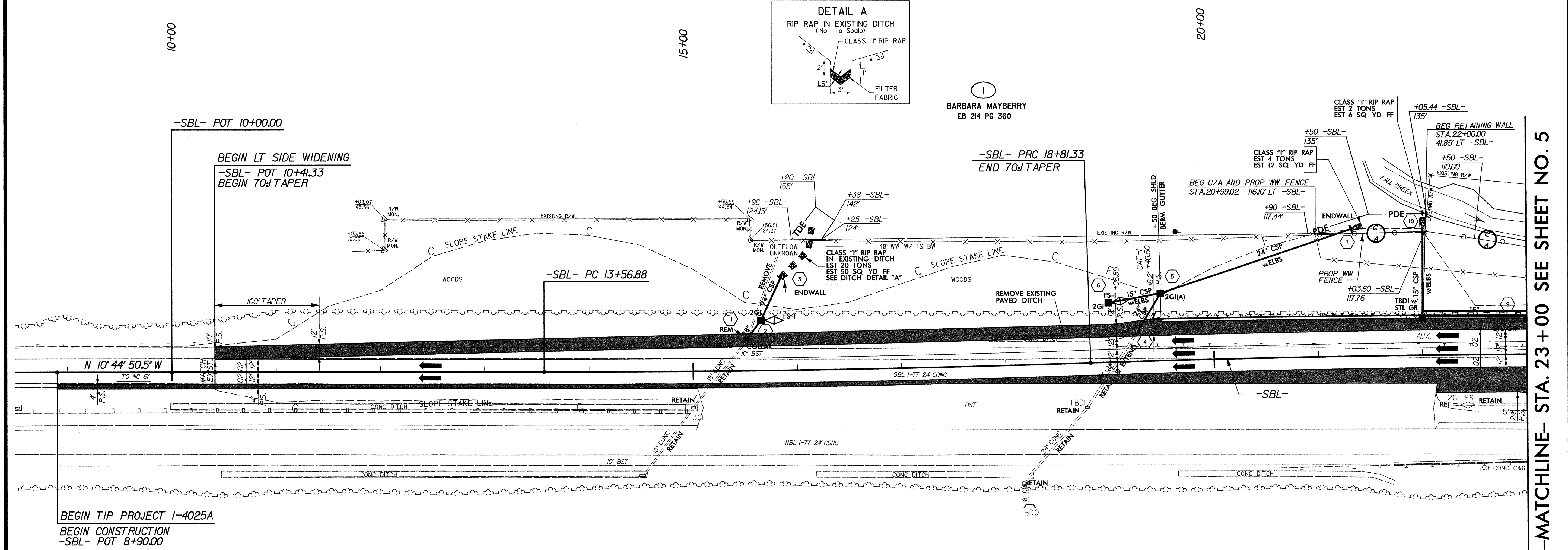
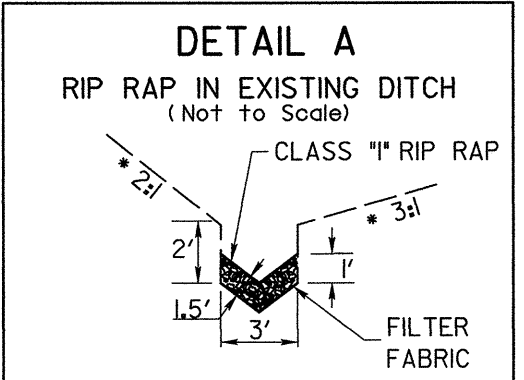
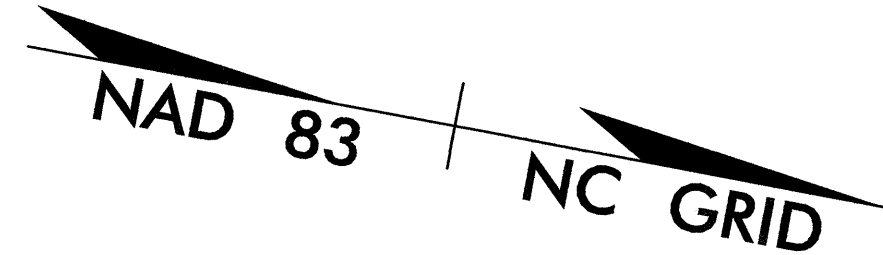


LEGEND

- PAVED SHOULDER
- PAVEMENT REMOVAL

-SBL-

PI Sta 16+19.12	PI Sta 21+43.58
$\Delta = 1' 44" 53.4" (LT)$	$\Delta = 1' 44" 53.4" (RT)$
$D = 0' 20' 00.0"$	$D = 0' 20' 00.0"$
$L = 524.45'$	$L = 524.46'$
$T = 262.24'$	$T = 262.25'$
$R = 17,188.73'$	$R = 17,188.73'$
SE = NC	SE = NC
DS = 70 MPH	DS = 70 MPH



ROADWAY	STATION	SIDE
-SBL-	15+65	LT
-SBL-	19+00	LT

BEGIN TIP PROJECT 1-4025A
BEGIN CONSTRUCTION
-SBL- POT 8+90.00

-MATCHLINE- STA. 23+00 SEE SHEET NO. 5

Plans prepared by:
KO & ASSOCIATES, P.C.
Consulting Engineers
1011 SCHAUB DR., SUITE #202
RALEIGH, N.C. 27606
For Division of Highways

FOR DETOUR PLANS, SEE SHEETS 2-C THRU 2-E
FOR RETAINING WALL DETAILS, SEE STRUCTURE PLANS
FOR -SBL- PROFILE, SEE SHEET 7

08/08/2004
C:\Roadway\Proj\1-4025a_r.dwg, psh, p4.dgn
Ko & Associates, P.C.