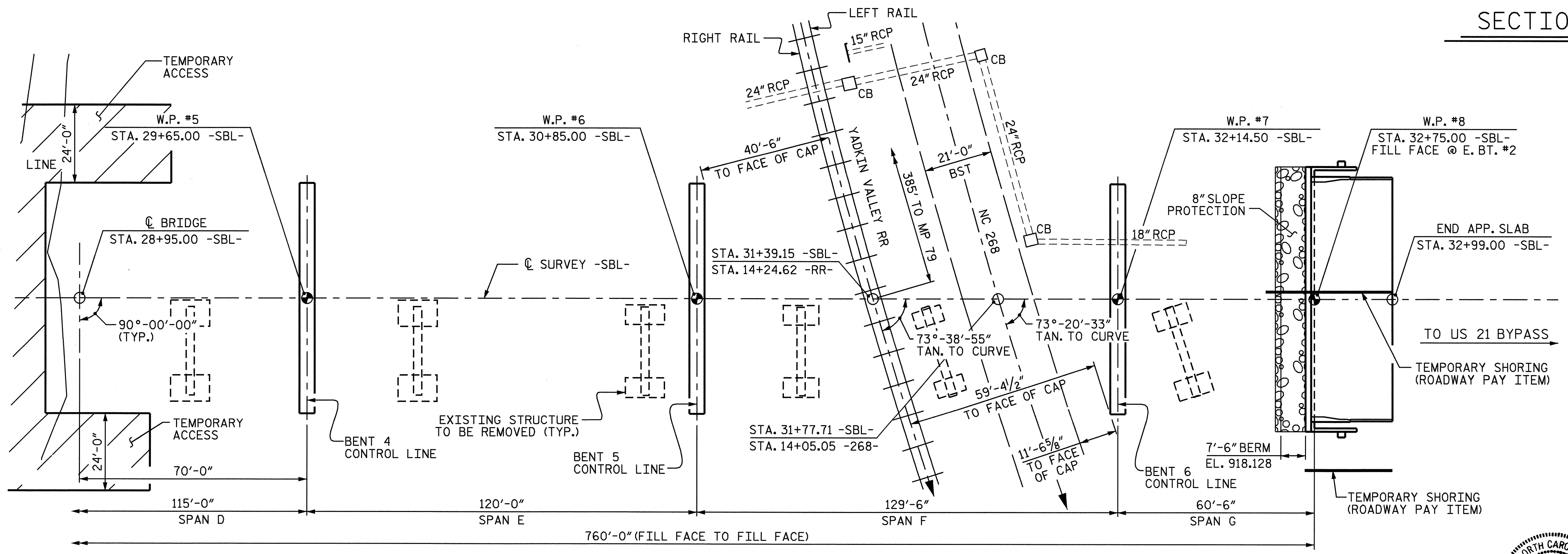
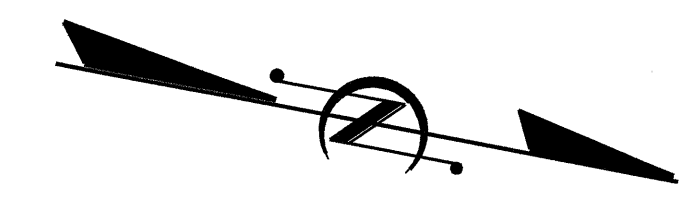
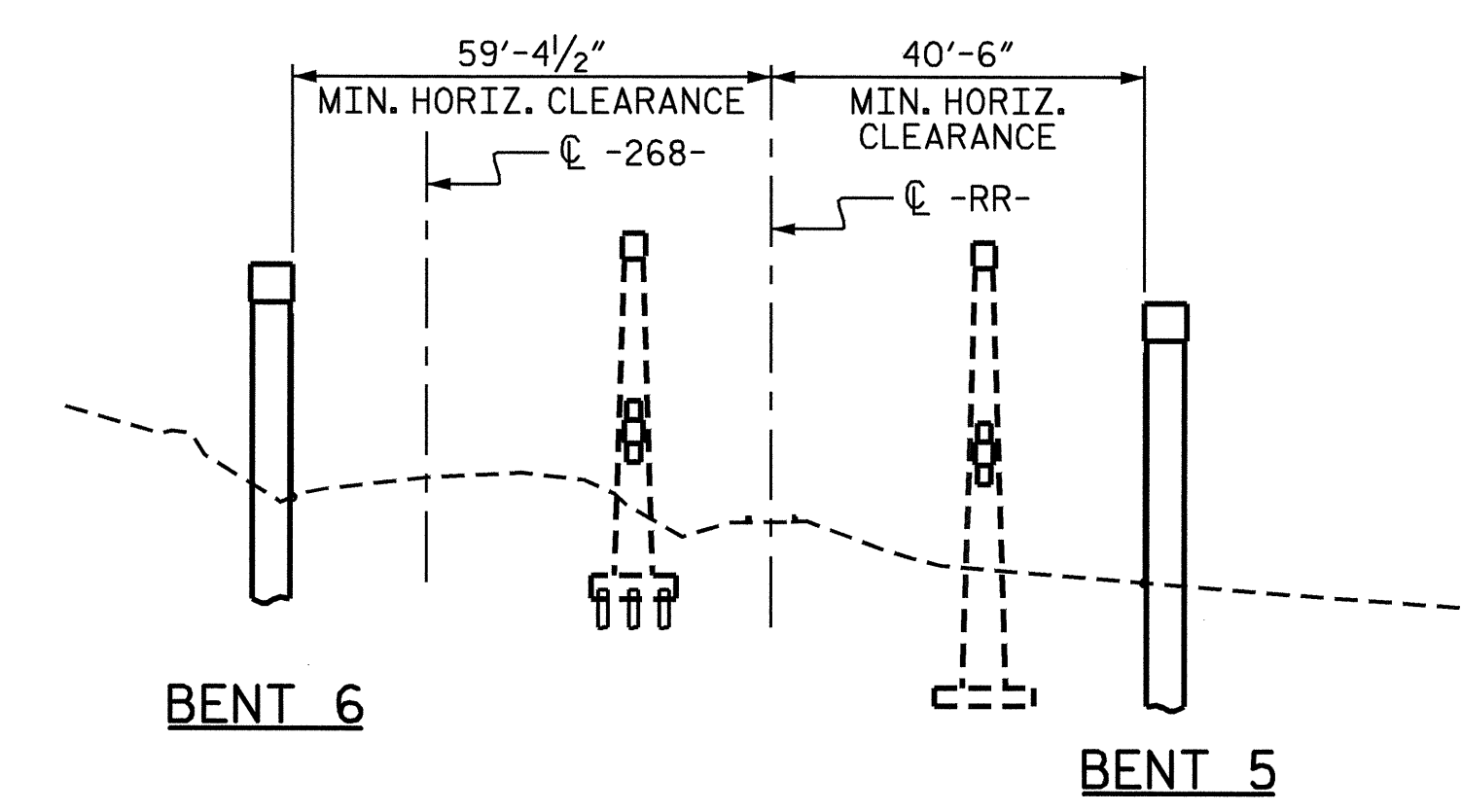
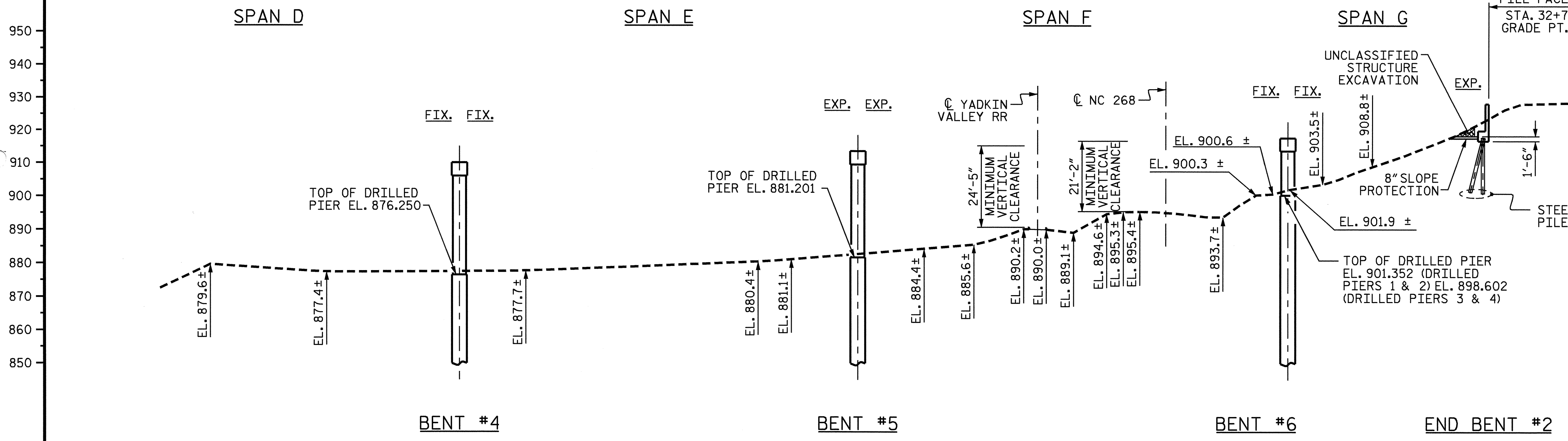


+60 +80 29+00 +20 +40 +60 +80 30+00 +20 +40 +60 +80 31+00 +20 +40 +60 +80 32+00 +20 +40 +60 +80 33+00 +20 +40 +60 +80

+3.5623% Δ +2.0000%
 PI STA. 33+45.00
 EL = 930.880
 VC = 390'

GRADE DATA

TOP OF RAIL ELEVATIONS		
STATION (-RR-)	LEFT RAIL	RIGHT RAIL
12+89.62	890.554	-----
12+91.67	-----	890.768
13+20.34	890.588	-----
13+22.41	-----	890.752
13+46.95	890.574	-----
13+47.31	-----	890.797
13+77.00	890.648	-----
13+77.84	-----	890.798
14+03.54	890.669	-----
14+04.92	-----	890.809
14+16.78	-----	890.728
14+31.30	890.605	-----
14+70.38	-----	890.812
14+81.13	890.710	-----
15+19.64	-----	890.771
15+35.69	890.628	-----
15+52.69	890.611	-----
15+63.62	890.629	-----
15+70.96	-----	890.641
15+73.09	-----	890.644



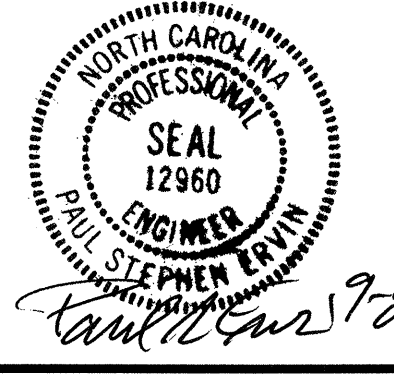
PROJECT NO. I-4025A
YADKIN-SURRY COUNTY
 STATION: 28+95.00 -SBL-

SHEET 2 OF 5

STATE OF NORTH CAROLINA
 DEPARTMENT OF TRANSPORTATION
 RALEIGH

GENERAL DRAWING
 FOR BRIDGE OVER
 YADKIN RIVER ON
 I-77 SBL BETWEEN
 NC 67 & US 21 BYPASS

REVISIONS						SHEET NO.
NO.	BY:	DATE:	NO.	BY:	DATE:	TOTAL SHEETS
1			3			5-2
2			4			7-8



08-SEP-2004 14:06 W:\sq\cd\14025a\isurfrom\14025a_sd_P0052_01.dgn

DRAWN BY: L.E.S. / T.A.W DATE: 6/28/04
 CHECKED BY: P.S. ERVIN DATE: 8/18/04

(PILES AND DRILLED PIERS NOT SHOWN FOR CLARITY)