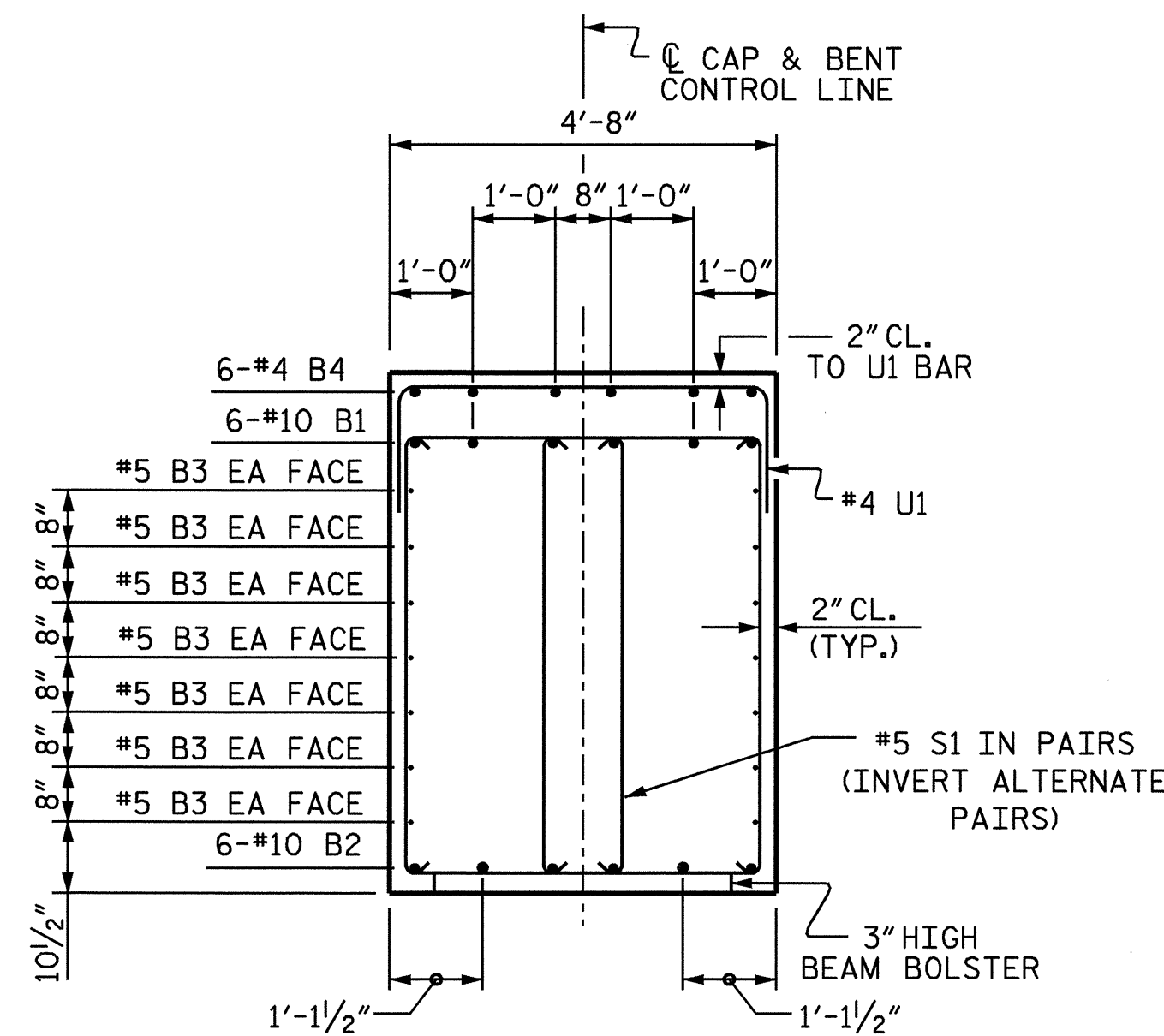
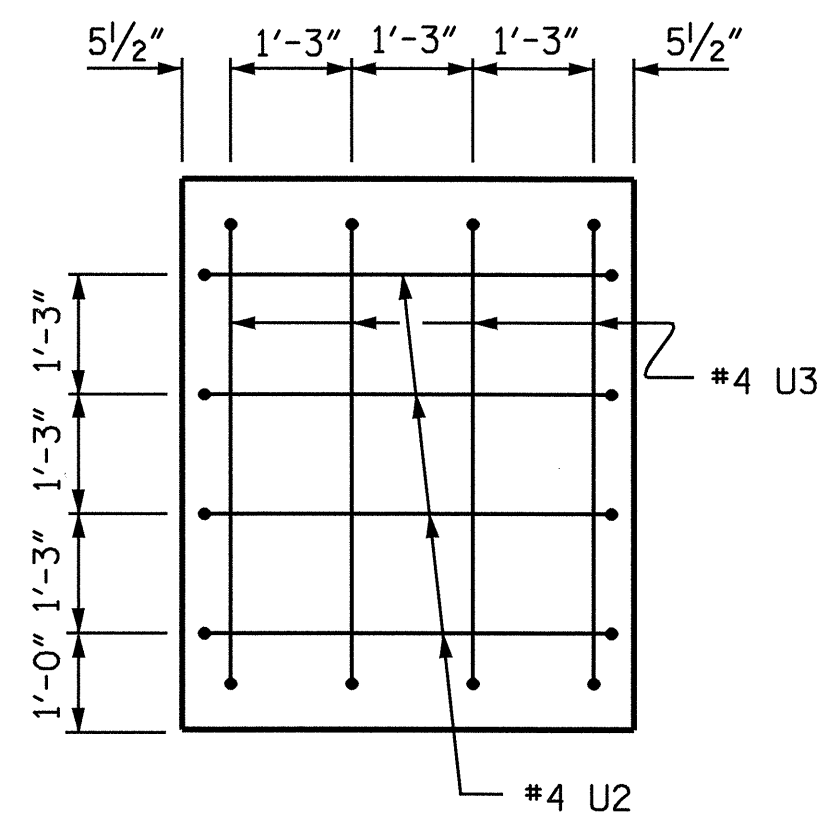


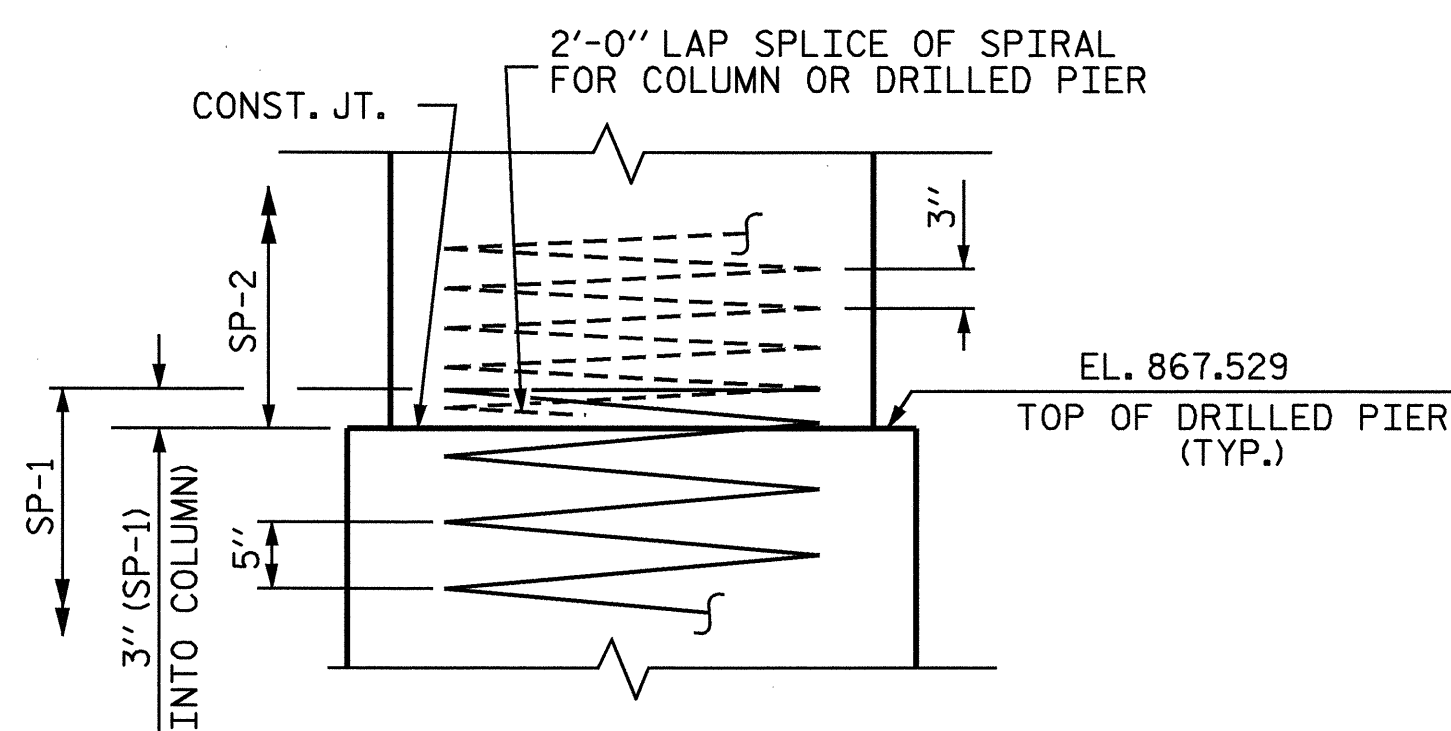
SECTION A-A



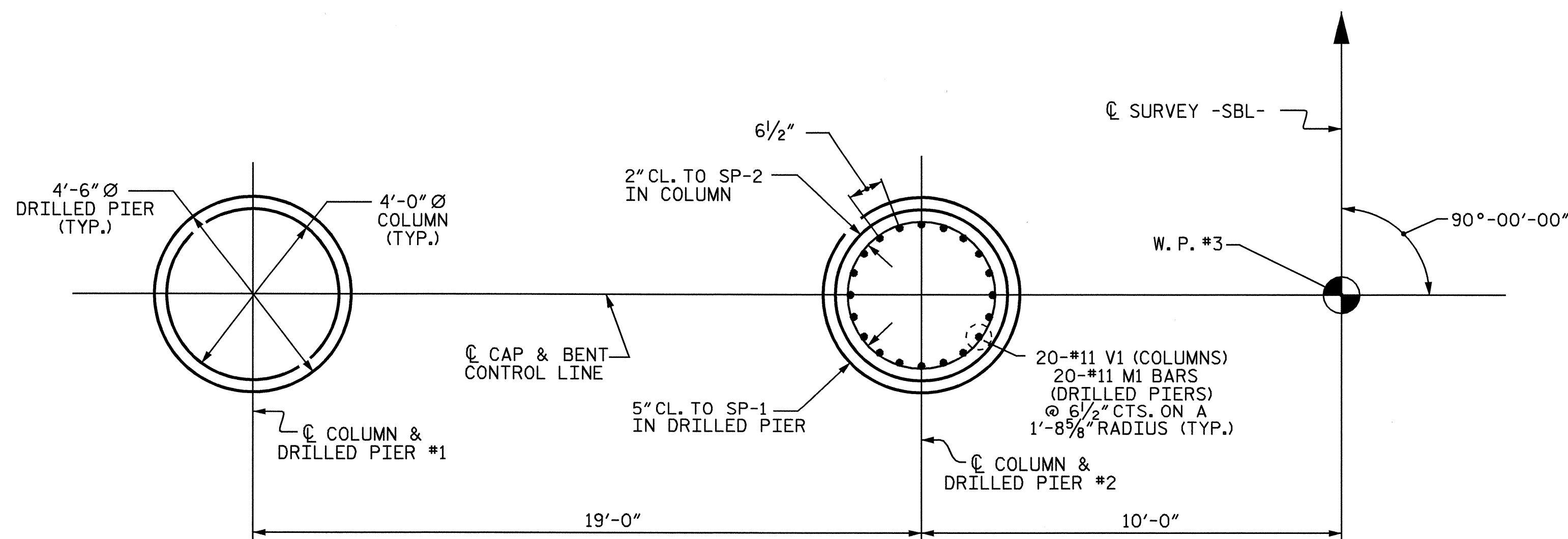
SECTION B-B



LEFT END VIEW



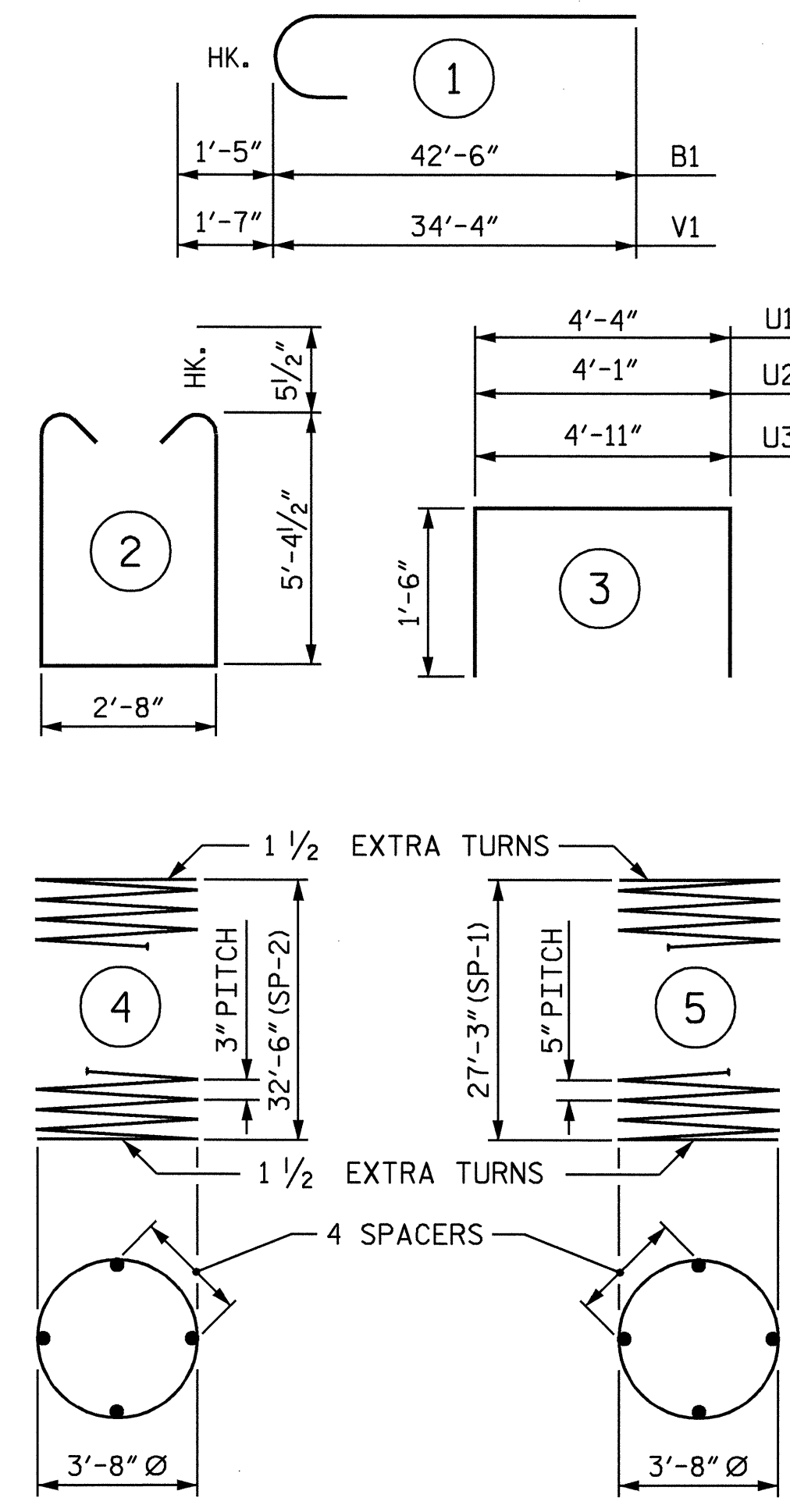
CONSTRUCTION JOINT DETAIL



PLAN OF COLUMNS AND DRILLED PIERS

DIMENSIONS AND REINFORCING STEEL SHOWN ARE TYPICAL FOR EACH DRILLED PIER

BAR TYPES



ALL BAR DIMENSIONS ARE OUT TO OUT.

** THE SP-1 SPIRAL REINFORCING STEEL SHALL BE W31 OR D-31 COLD DRAWN WIRE OR #5 PLAIN OR DEFORMED BAR.
 *** THE SP-2 SPIRAL REINFORCING STEEL SHALL BE W20 OR D-20 COLD DRAWN WIRE OR #4 PLAIN OR DEFORMED BAR.

BILL OF MATERIAL

BENT 2 STAGE I

BAR	NO.	SIZE	TYPE	LENGTH	WEIGHT
B1	6	#10	1	43'-11"	1134
B2	6	#10	STR	39'-5"	1018
B3	14	#5	STR	34'-6"	504
B4	6	#4	STR	16'-3"	65
M1	40	#11	STR	37'-8"	8005
S1	46	#5	2	14'-4"	688
U1	31	#4	3	7'-4"	152
U2	4	#4	3	7'-1"	19
U3	4	#4	3	7'-11"	21
V1	40	#11	1	35'-11"	7633

REINFORCING STEEL LBS. 19239

SP-1	2	**	5	784'-1"	1636
SP-2	2	***	4	1515'-1"	2024

TOTAL SPIRAL COLUMN REINFORCING STEEL LBS. 3660

CLASS 'A' CONCRETE BREAKDOWN		
POUR #2 (COLUMNS)	CU.YD.	30.0
POUR #3 (CAP)	CU.YD.	32.5

TOTAL CONCRETE CU.YD. 62.5

DRILLED PIER QUANTITIES

DRILLED PIER CONCRETE		
POUR #1 (DRILLED PIERS)	CU.YD.	32.7
4'-6" Ø DRILLED PIER NOT IN SOIL	LIN. FT.	24.00
4'-6" Ø DRILLED PIER IN SOIL	LIN. FT.	31.50
PERMANENT STEEL CASING FOR 4'-6" Ø DRILLED PIER	LIN. FT.	25.06
CSL TUBES	LIN. FT.	242.00

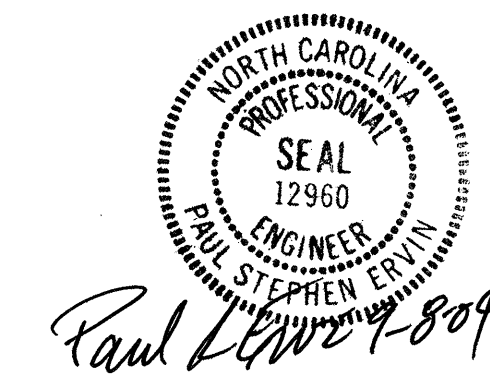
PROJECT NO. I-4025A
 YADKIN-SURRY COUNTY
 STATION: 28+95.00-SBL-

SHEET 2 OF 2

STATE OF NORTH CAROLINA
 DEPARTMENT OF TRANSPORTATION
 RALEIGH

SUBSTRUCTURE
 BENT 2
 STAGE I

REVISIONS					SHEET NO.
NO.	BY:	DATE:	NO.	BY:	DATE:
1			3		
2			4		



DRAWN BY: B.N.BARODAWALA DATE: 7-12-04
 CHECKED BY: P.S.ERVIN DATE: 8-17-04

18-AUG-2004 08:57
 w:\Squad\14025a\barodawala\I-4025A.sd.B1-6.01.dgn
 bbarodawala