

**NOTES**

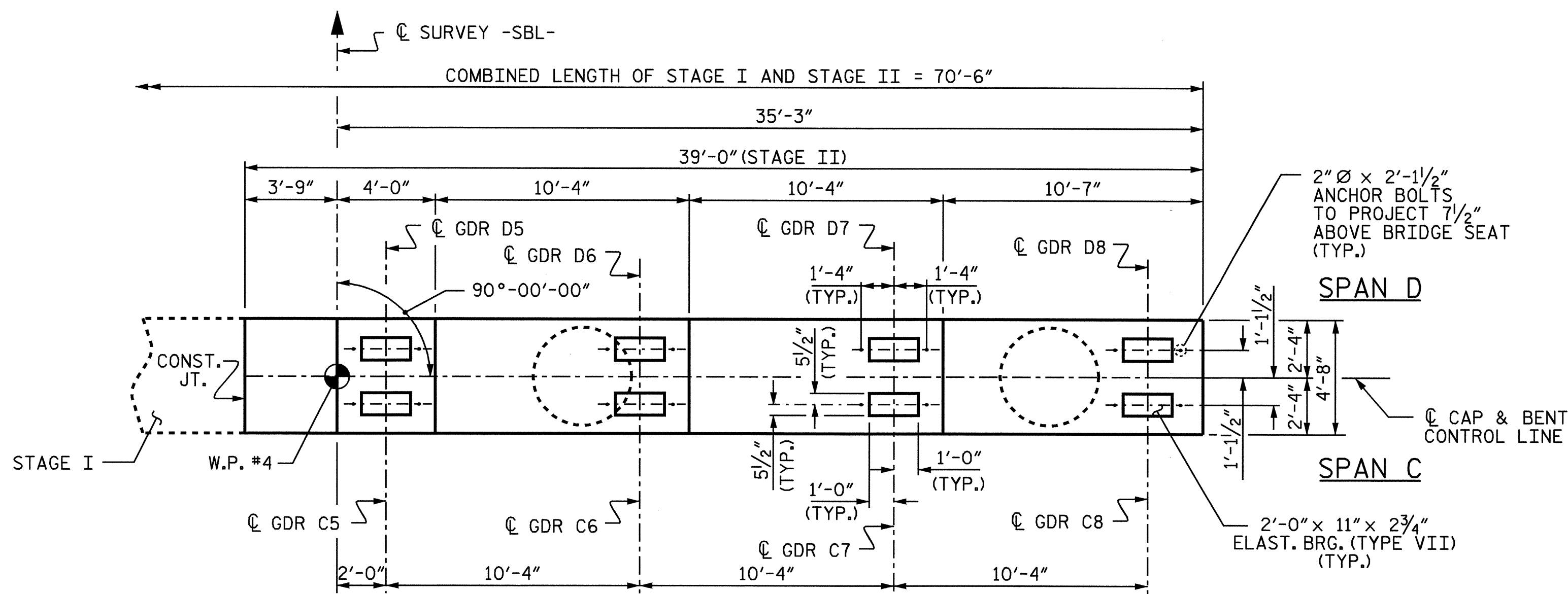
STIRRUPS IN CAP MAY BE SHIFTED AS NECESSARY TO CLEAR ANCHOR BOLTS.

HOOKS ON V1 BARS MAY BE TURNED AS NECESSARY FOR PLACING REINFORCING STEEL.

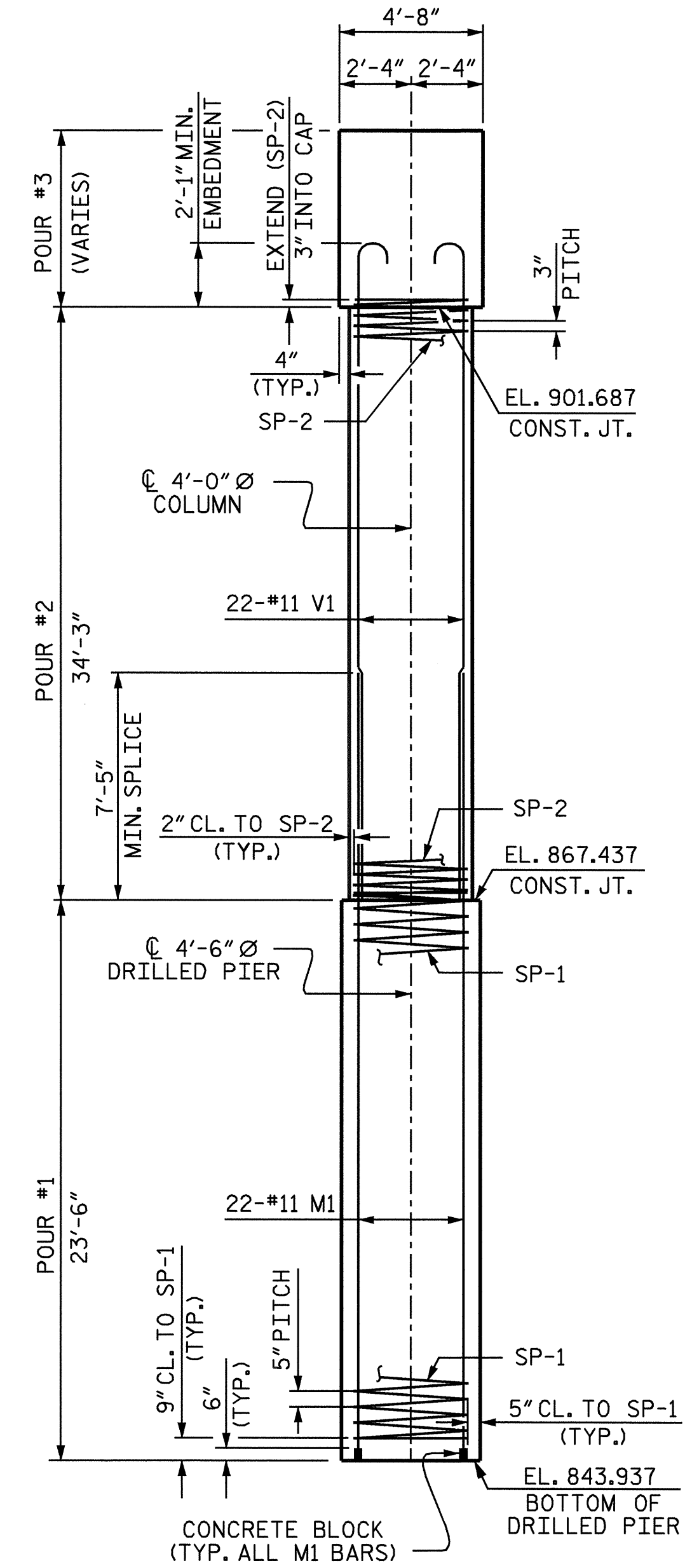
THE CONTRACTORS ATTENTION IS CALLED TO THE FACT THAT THE LONGITUDINAL REINFORCEMENT FOR THE DRILLED PIERS IS DETAILED WITH 3 FEET OF EXTRA LENGTH.

ALL STEEL IN THE DRILLED PIERS IS INCLUDED IN THE PAY ITEMS FOR "REINFORCING STEEL" AND "SPIRAL COLUMN REINFORCING STEEL".

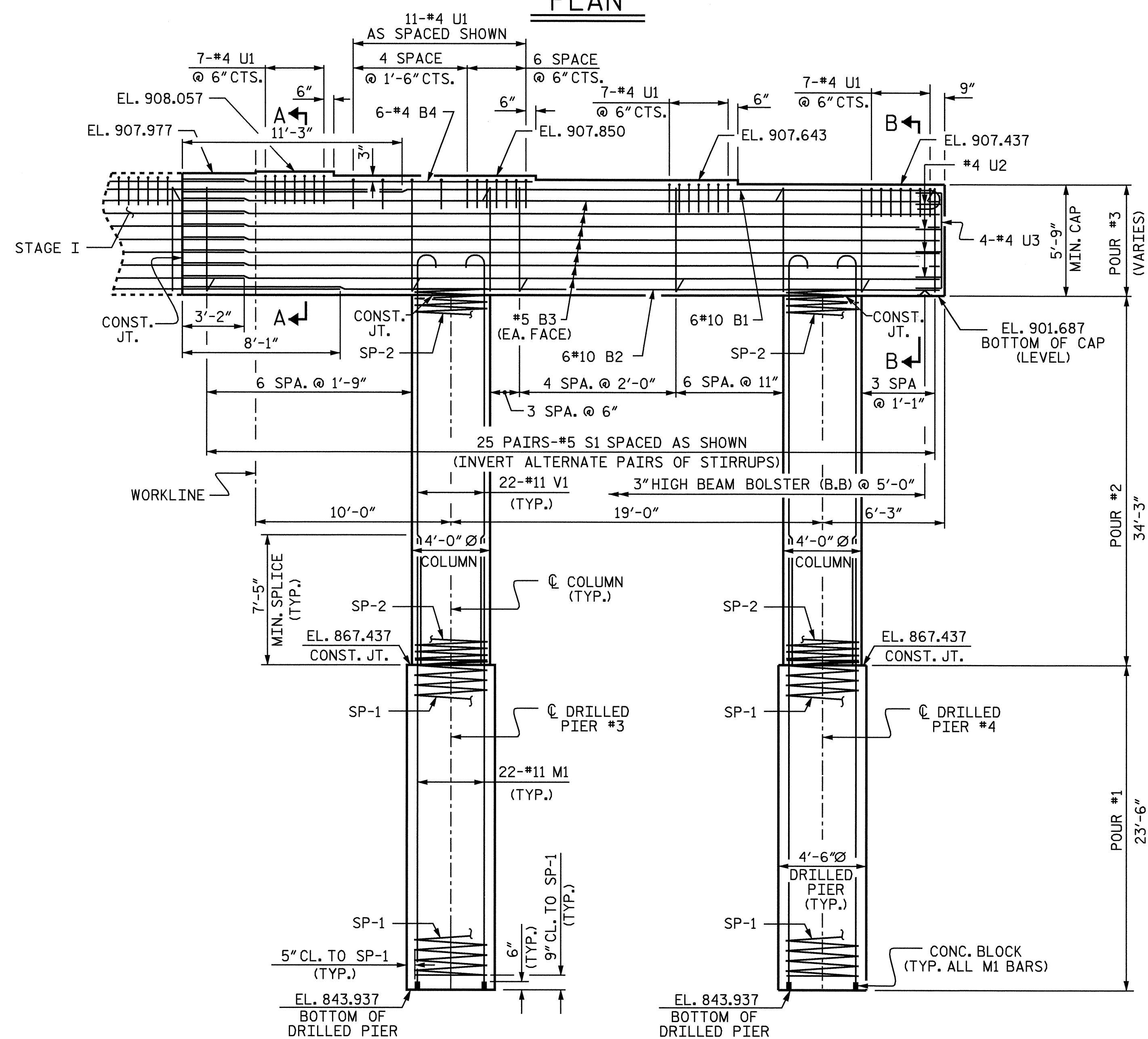
SPLICING OF THE LONGITUDINAL BARS IN THE DRILLED PIERS WILL NOT BE PERMITTED.



**PLAN**



**END ELEVATION**



**ELEVATION**

PROJECT NO. I-4025A  
 YADKIN-SURRY COUNTY  
 STATION: 28+95.00-SBL-

SHEET 1 OF 2

STATE OF NORTH CAROLINA DEPARTMENT OF TRANSPORTATION RALEIGH					SHEET NO.
SUBSTRUCTURE					6-54
BENT 3					TOTAL SHEETS
STAGE II					72
REVISIONS					
NO.	BY:	DATE:	NO.	BY:	DATE:
1			3		
2			4		



DRAWN BY: B.N.BARODAWALA DATE: 7-12-04  
 CHECKED BY: P.S.ERVIN DATE: 8-17-04

18-AUG-2004 07:32  
 W:\Squadd\14025a\barodawala\I-4025A.sd.B1-6.01.dgn  
 bbarodawala