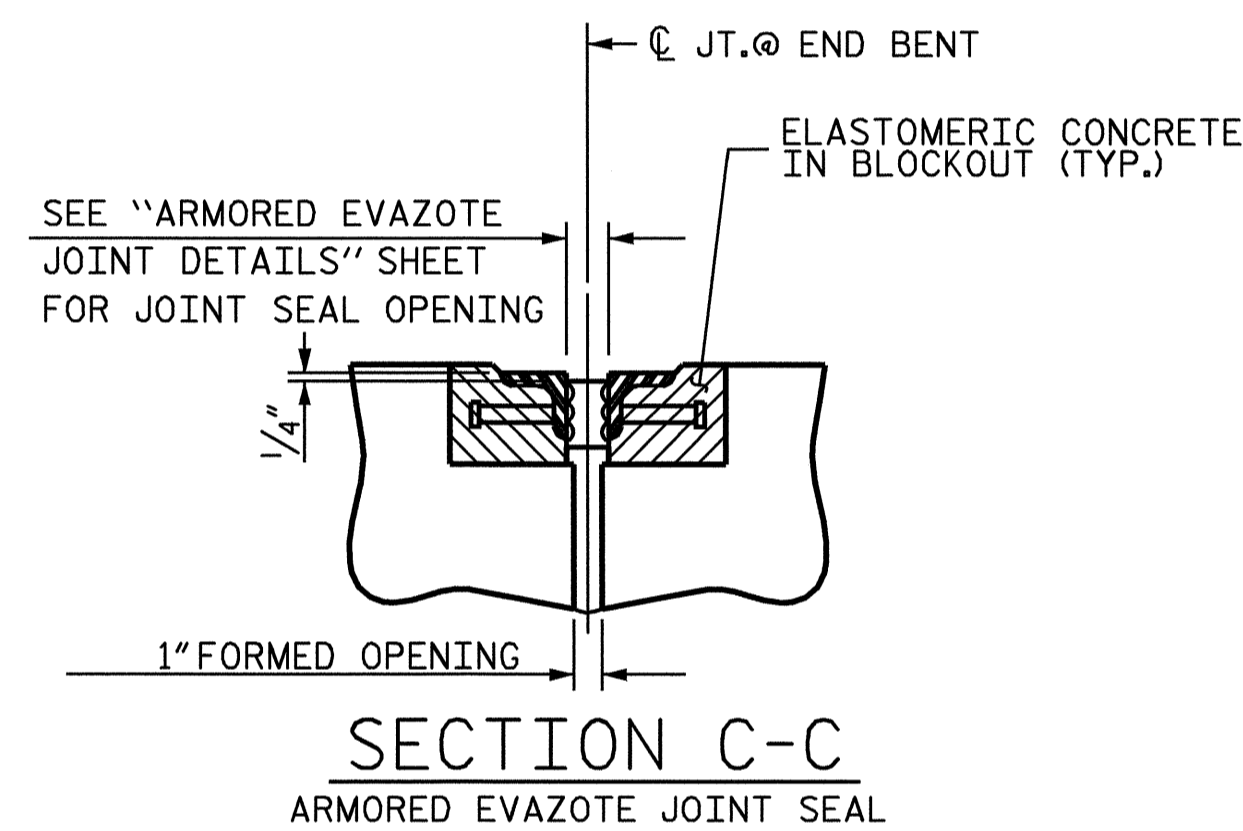
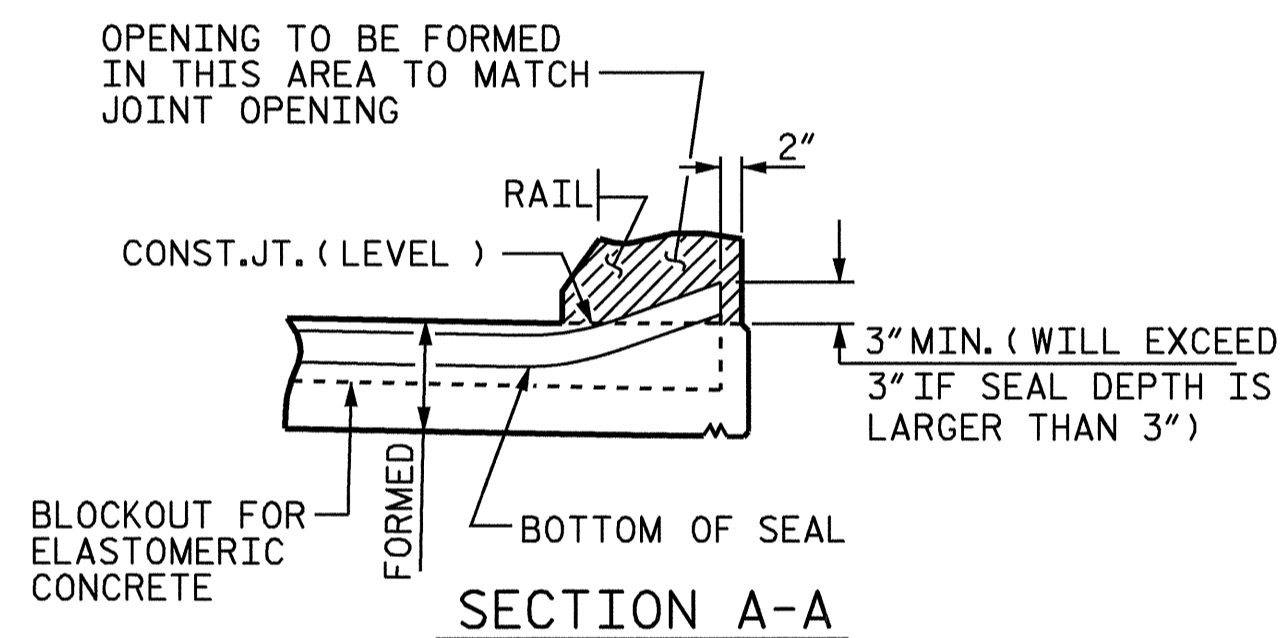


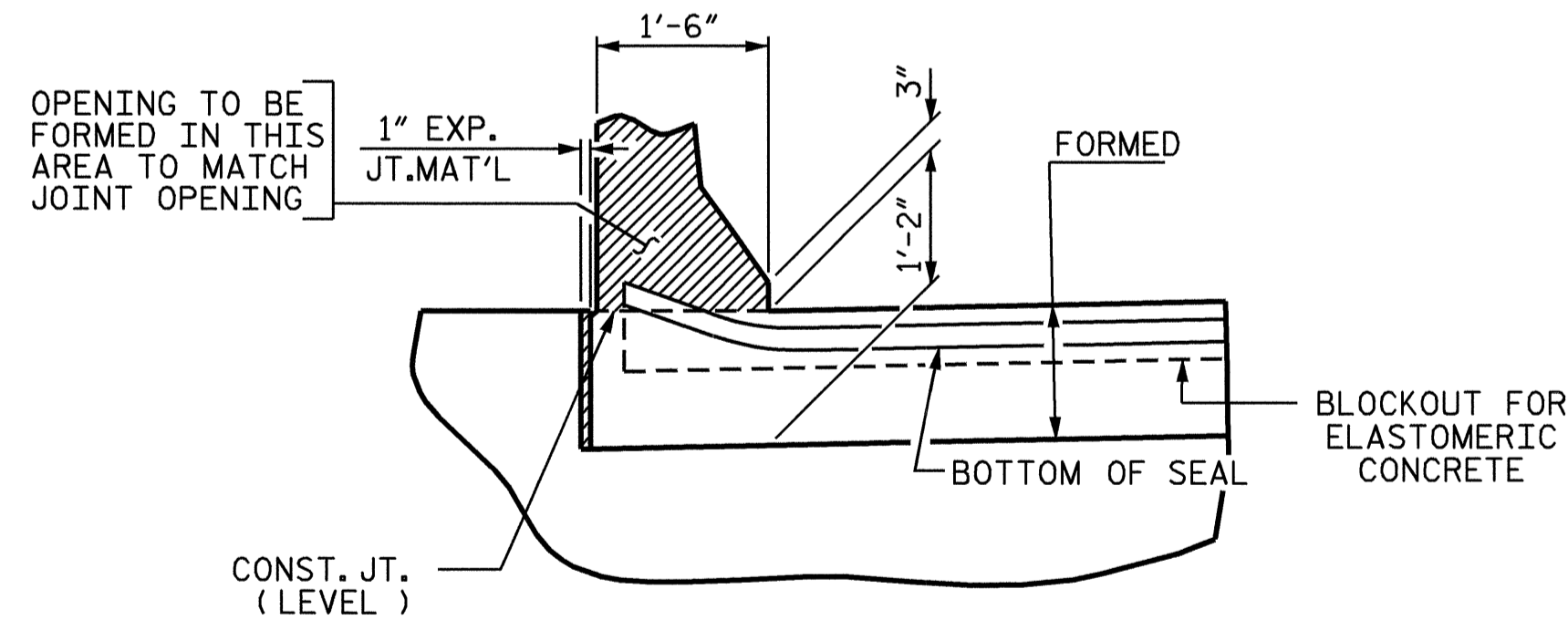
PLAN



SECTION C-C
ARMORED EVAZOTE JOINT SEAL

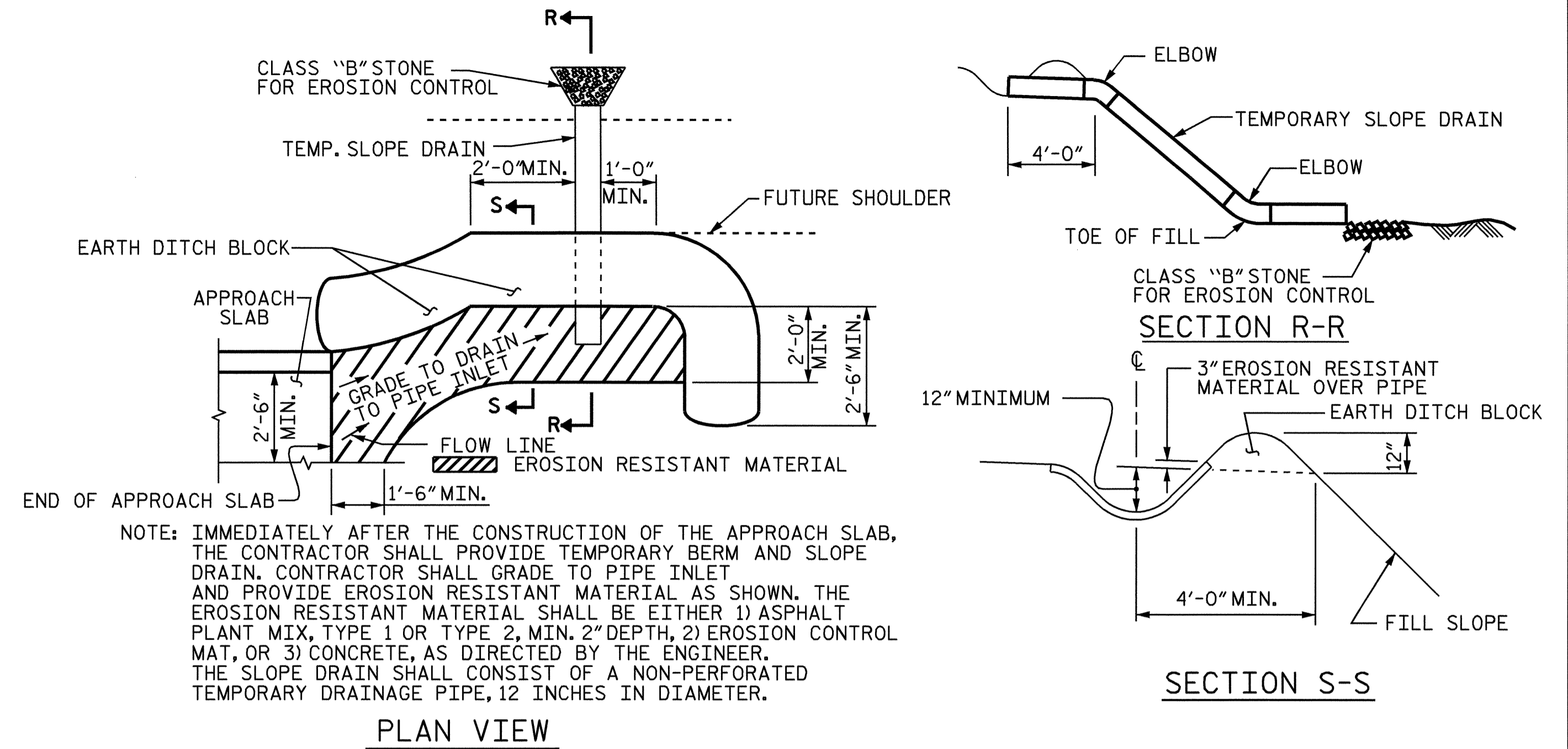


SECTION A-A



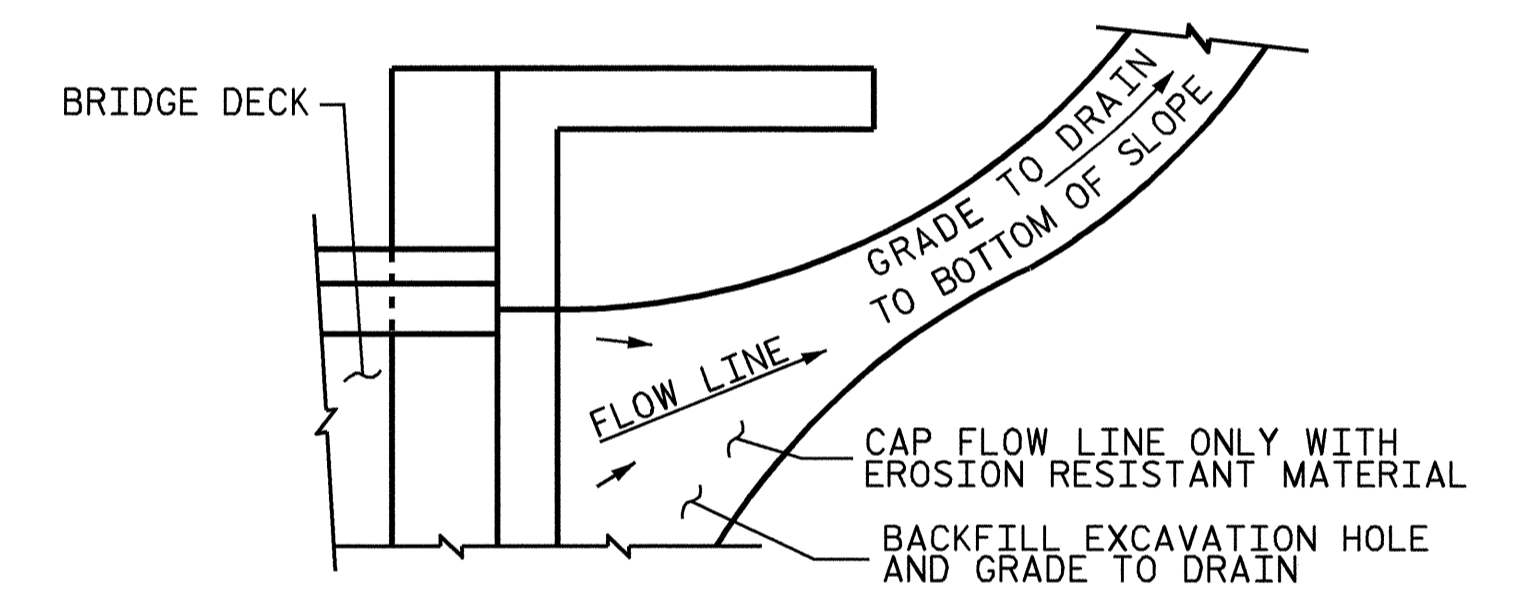
SECTION B-B

JOINT SEAL DETAILS @ END BENT
(FOR BARRIER RAIL)



PLAN VIEW

TEMPORARY BERM AND SLOPE DRAIN DETAILS

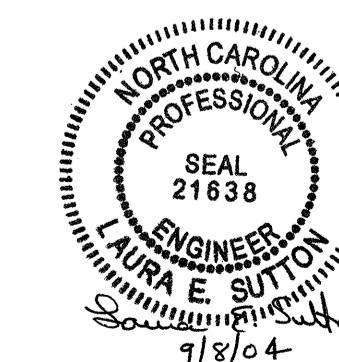


NOTE: IF THE APPROACH SLAB IS NOT CONSTRUCTED IMMEDIATELY AFTER THE BACKFILLING OF THE END BENT EXCAVATION, GRADE TO DRAIN TO THE BOTTOM OF THE SLOPE AND PROVIDE EROSION RESISTANT MATERIAL, SUCH AS FIBERGLASS ROVING OR AS DIRECTED BY THE ENGINEER TO PREVENT SOIL EROSION AND TO PROTECT THE AREA ADJACENT TO THE STRUCTURE. THE CONTRACTOR WILL BE REQUIRED TO REMOVE THESE MATERIALS PRIOR TO CONSTRUCTION OF THE APPROACH SLAB.

TEMPORARY DRAINAGE DETAIL

PROJECT NO. I-4025A
YADKIN-SURRY COUNTY
 STATION: 28+95.00 -SBL-

SHEET 4 OF 5



STATE OF NORTH CAROLINA
 DEPARTMENT OF TRANSPORTATION
 RALEIGH
 STANDARD
 BRIDGE APPROACH SLAB
 DETAILS FOR RIGID
 PAVEMENT WITH
 BARRIER RAIL

REVISIONS						SHEET NO.	
NO.	BY:	DATE:	NO.	BY:	DATE:	5-77	TOTAL SHEETS
1			3				78
2			4				

ASSEMBLED BY : A.S. CALLAWAY	DATE : 6/24/04
CHECKED BY : B.N. BARODAWALA	DATE : 8/19/04
DRAWN BY : FCJ	11/88
CHECKED BY : ARB	11/88
REV. 8/16/99	MAB/LES
REV. 10/17/00	RWW/LES
REV. 5/7/03	RWW/JTE