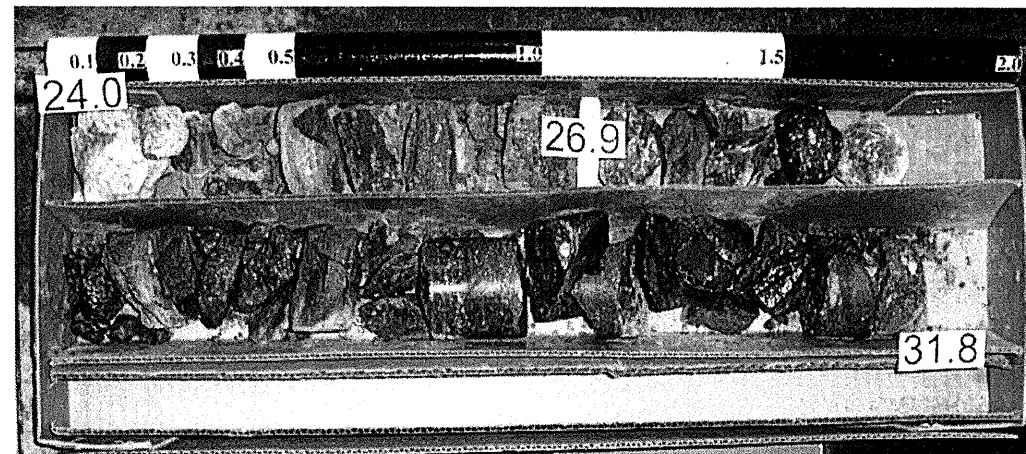
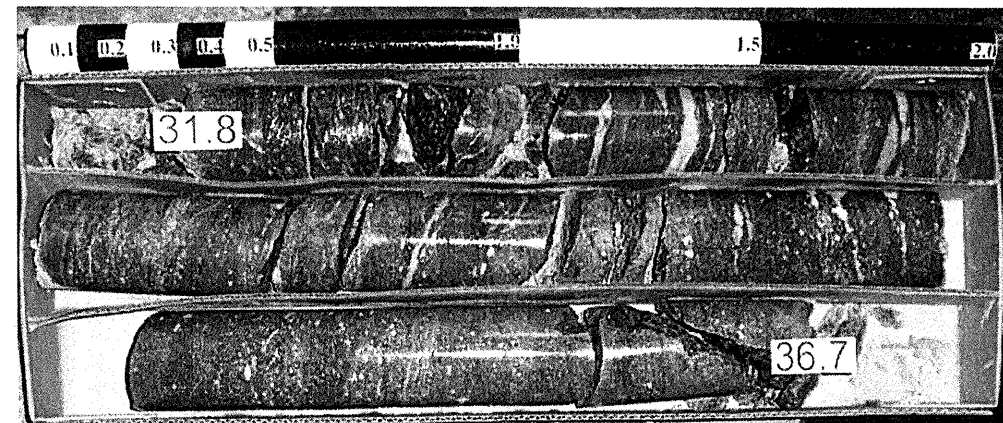


# CORE PHOTOGRAPHS

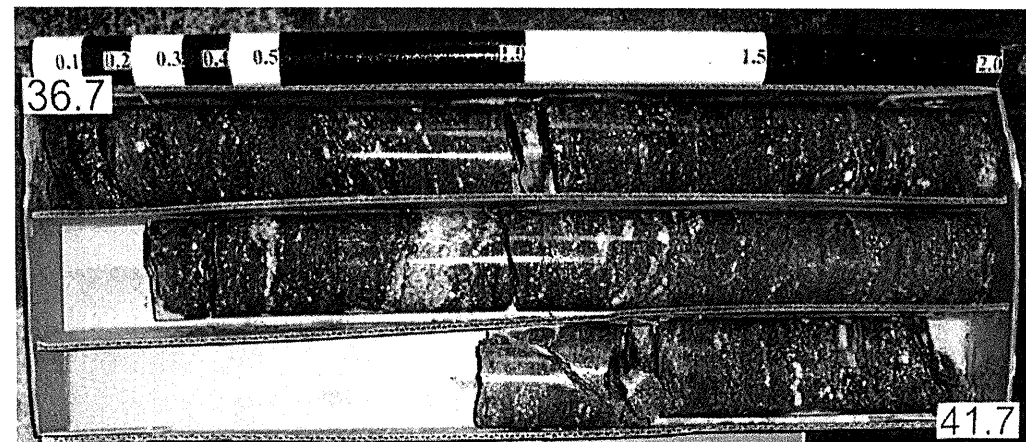
Bridge No. 13 on I-77 SBL over the Yadkin River, Yadkin Valley Railroad, and NC 268  
WBS Element No. 34209.1.1 TIP No. I-4025A  
B4-A CS



Box 1 of 5



Box 2 of 5

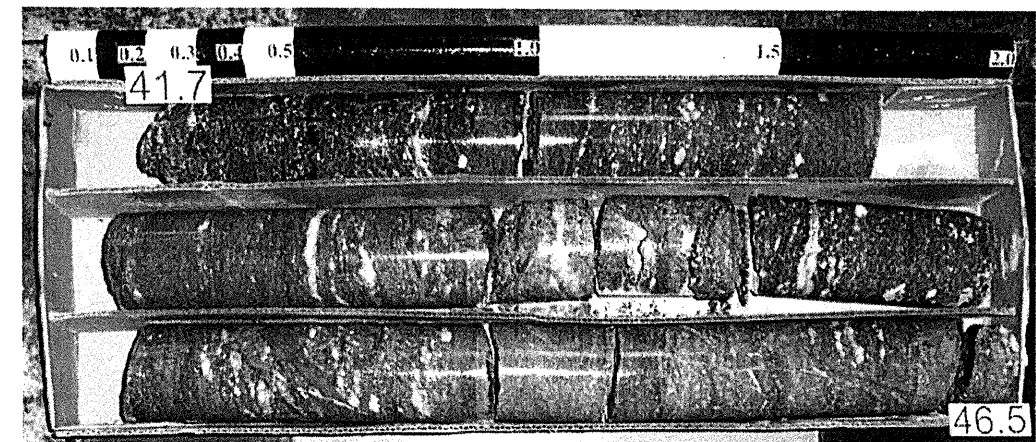


Box 3 of 5

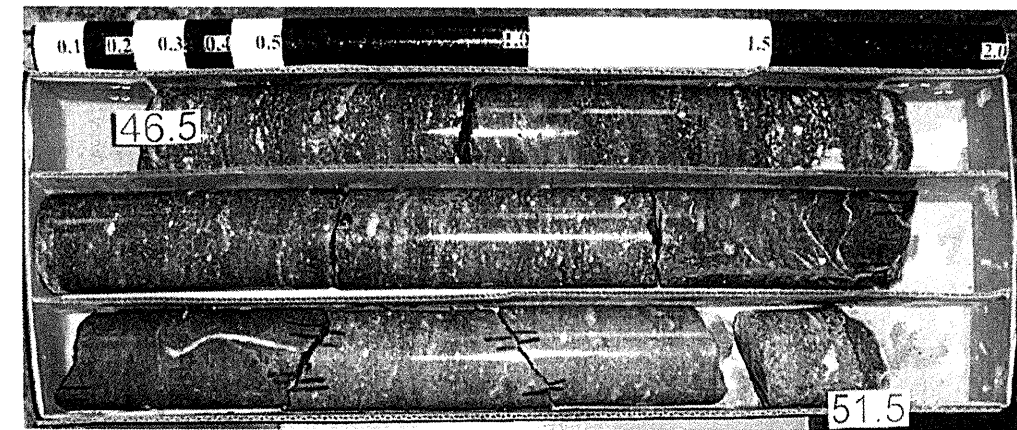
(SCALE = 1:4)

# CORE PHOTOGRAPHS

Bridge No. 13 on I-77 SBL over the Yadkin River, Yadkin Valley Railroad, and NC 268  
WBS Element No. 34209.1.1 TIP No. I-4025A  
B4-A CS



Box 4 of 5



Box 5 of 5

(SCALE = 1:4)