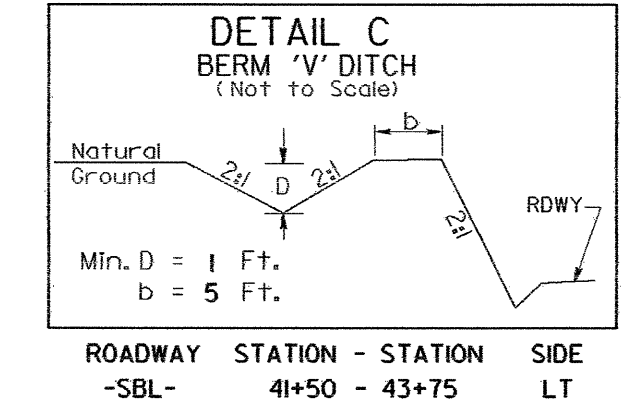
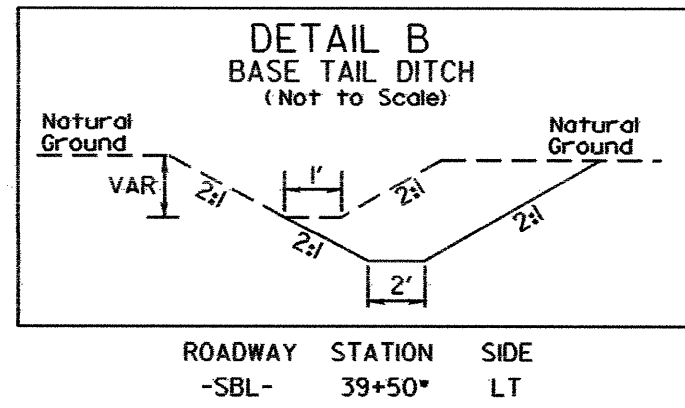
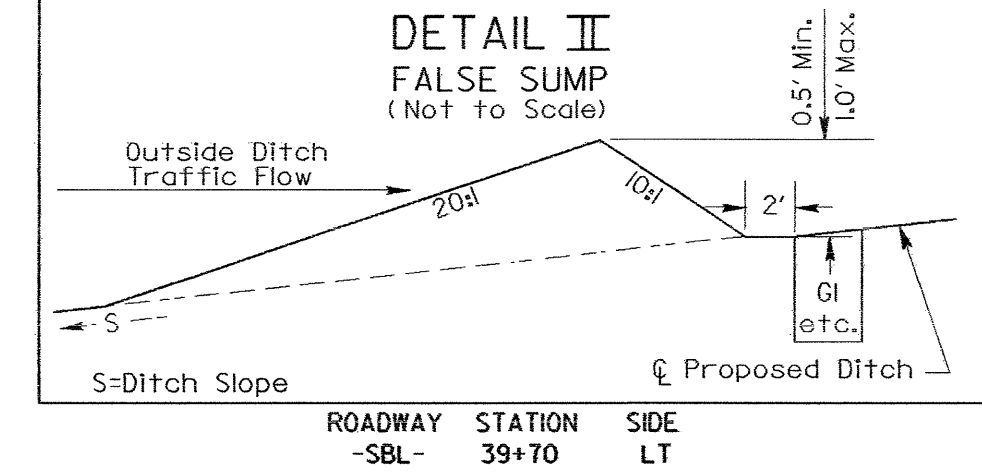
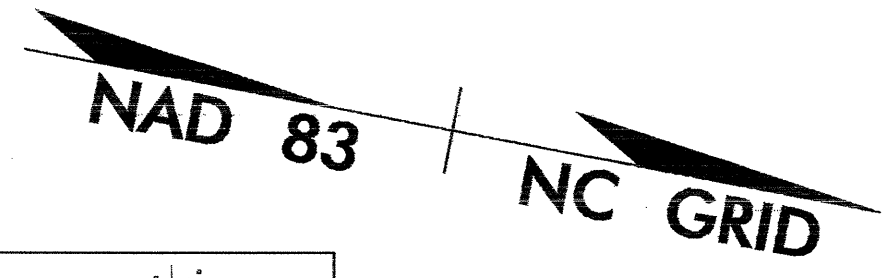


PROJECT REFERENCE NO. I-4025A	SHEET NO. EC-5/CONST.2-E
RW SHEET NO.	
ROADWAY DESIGN ENGINEER	HYDRAULICS ENGINEER

CLEARING AND GRUBBING EROSION CONTROL FOR CONSTRUCTION SHEET 2-E



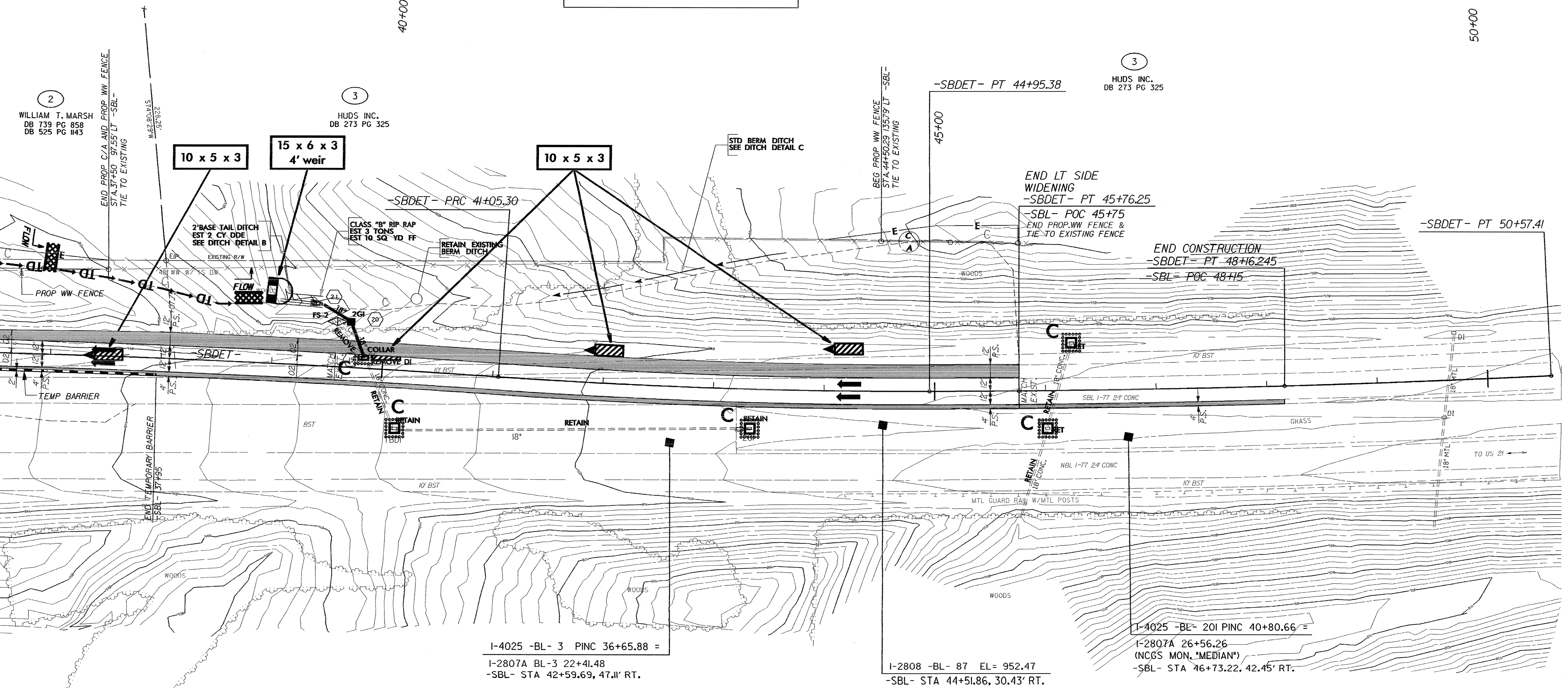
NOTE: PLACE TEMPORARY ROCK SEDIMENT DAMS TYPE-B AND TEMPORARY ROCK SILT CHECKS TYPE-A AT DRAINAGE OUTLETS.



-SBDET-

PI Sta 37+24.42	PI Sta 43+00.41
$\Delta = 3^{\circ} 48' 36.7''$ (RT)	$\Delta = 3^{\circ} 54' 02.9''$ (LT)
D = 0' 30' 00.0"	D = 1' 00' 00.0"
L = 762.04'	L = 390.08'
T = 381.16'	T = 195.12'
R = 11,459.16'	R = 5,729.58'
SE = NC	SE = EXISTING
DS = 55 MPH	DS = 55 MPH

-MATCHLINE- STA. 36+50 SEE SHEET NO. 2-D



I-4025 -BL- 3 PINC 36+65.88 =
I-2807A BL-3 22+4L48
-SBL- STA 42+59.69, 47.11' RT.

I-2808 -BL- 87 EL= 952.47
-SBL- STA 44+51.86, 30.43' RT.

I-4025 -BL- 201 PINC 40+80.66 =
I-2807A 26+56.26
(NC6S MON. *MEDIAN*)
-SBL- STA 46+73.22, 42.45' RT.

FOR ROADWAY PLAN, SEE SHEET 6