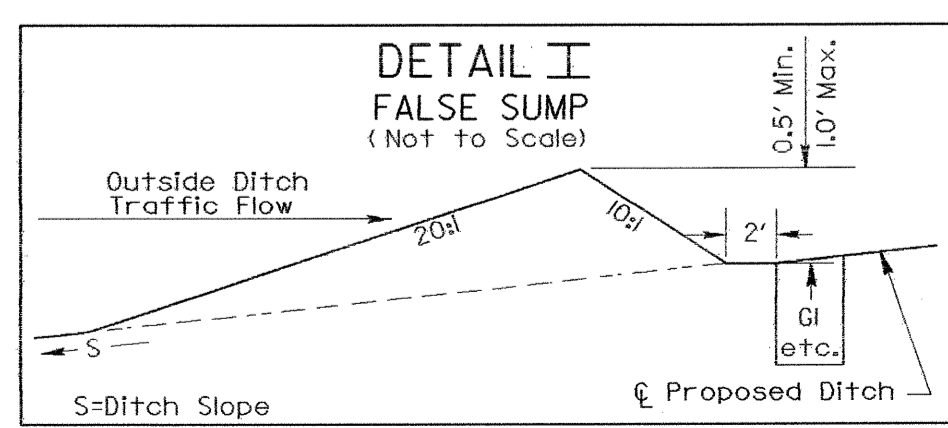
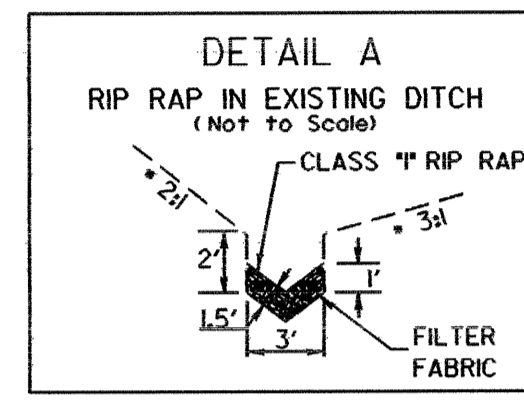
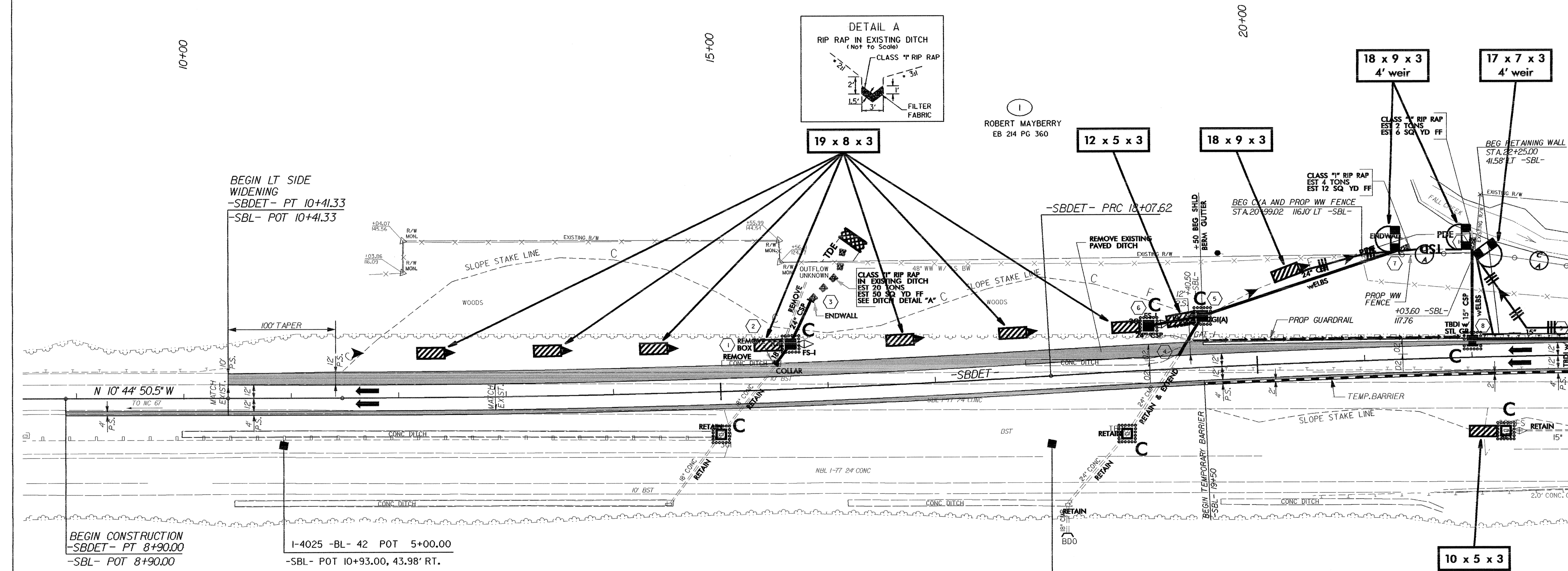


PROJECT REFERENCE NO.	SHEET NO.
I-4025A	EC-6/CONST.2-C
RW SHEET NO.	
ROADWAY DESIGN ENGINEER	HYDRAULICS ENGINEER

NAD 83 | NC GRID

-SBDT-

PI Sta 14+77.72	PI Sta 21+37.70
$\Delta = 3' 17' 59.8" (LT)$	$\Delta = 3' 17' 59.6" (RT)$
$D = 0' 30' 00.0"$	$D = 0' 30' 00.0"$
$L = 659.99'$	$L = 659.98'$
$T = 330.08'$	$T = 330.08'$
$R = 11,459.16'$	$R = 11,459.16'$
SE = NC	SE = NC
DS = 55 MPH	DS = 55 MPH



ROADWAY	STATION	SIDE
-SBL-	15+65	LT
-SBL-	19+00	LT

FOR ROADWAY PLAN, SEE SHEET 4
FOR RETAINING WALL DETAIL, SEE SHEET 2-F

-MATCHLINE- STA. 23+00 SEE SHEET NO. 2-D