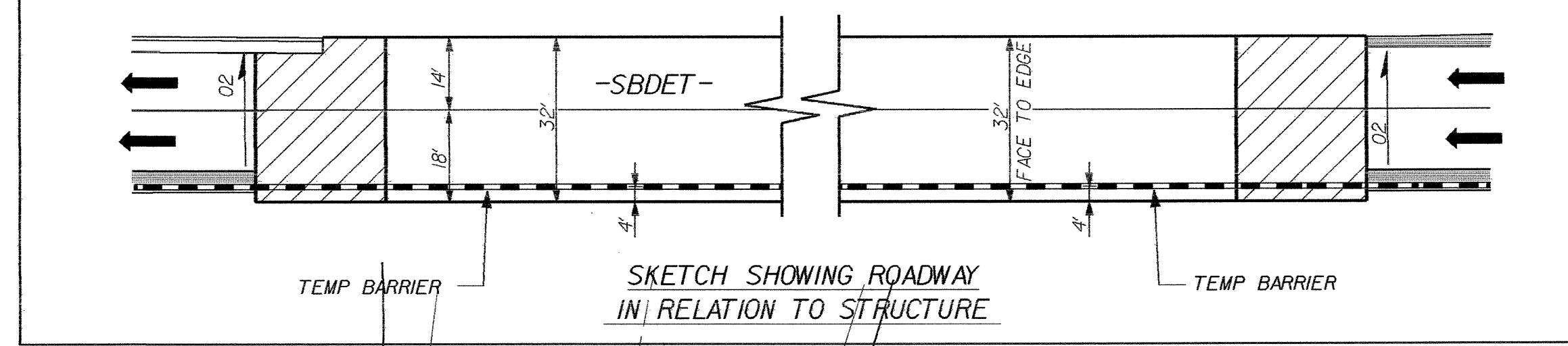


NOTE: UTILIZE SPECIAL STILLING BASIN, AND TEMPORARY ROCK SEDIMENT DAM TYPE - B AS STILLING BASIN, WHERE APPLICABLE.



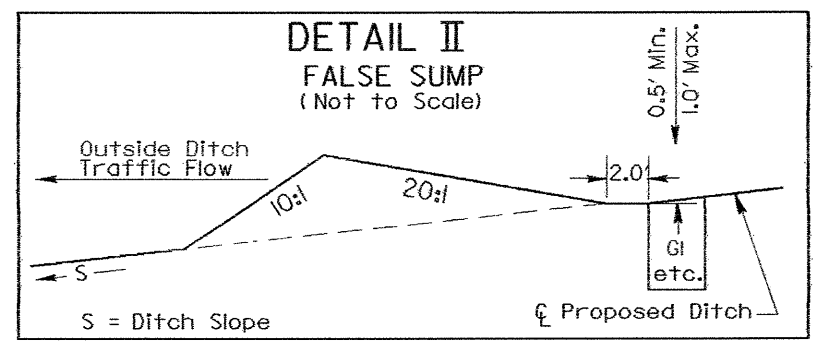
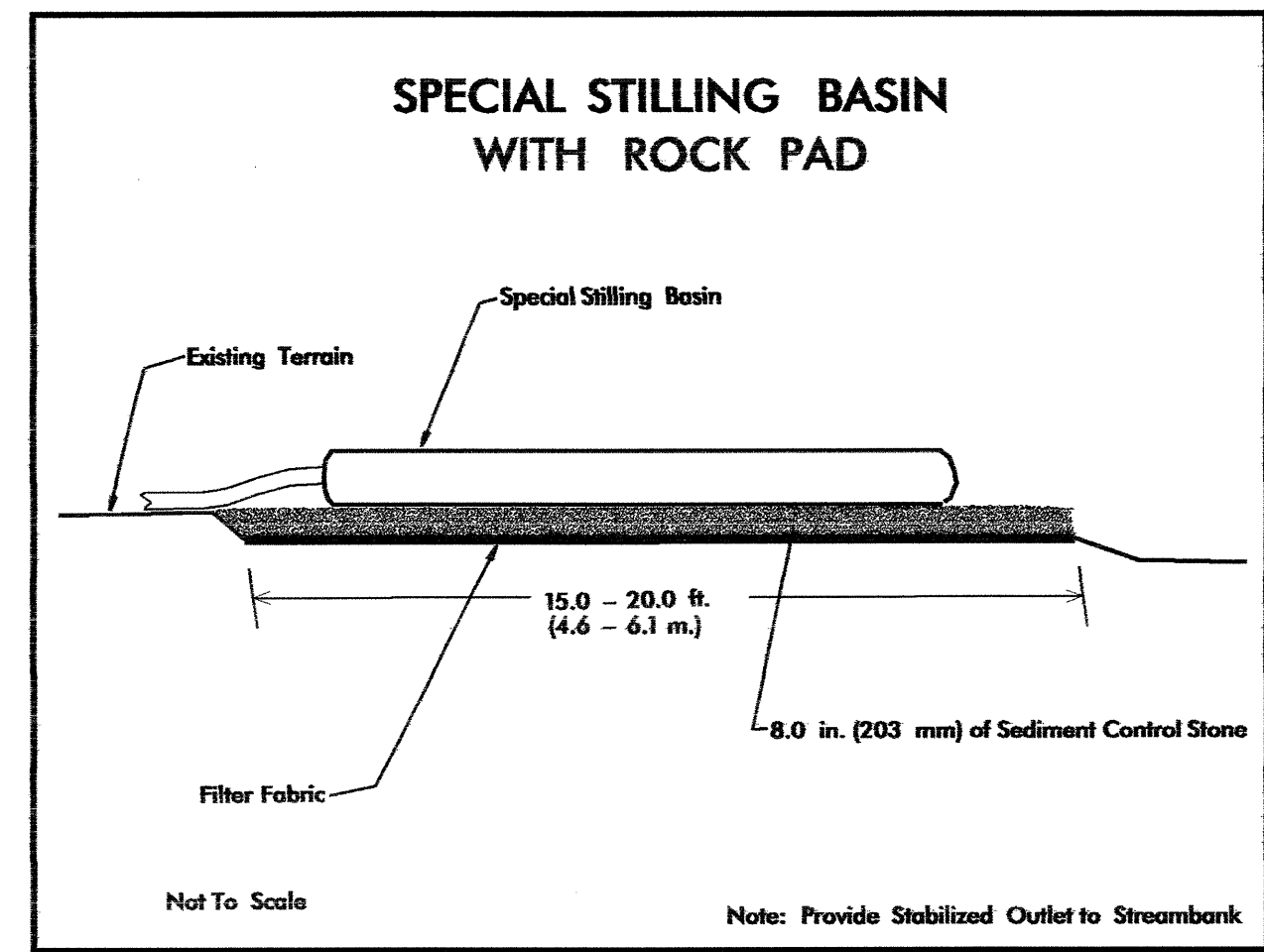
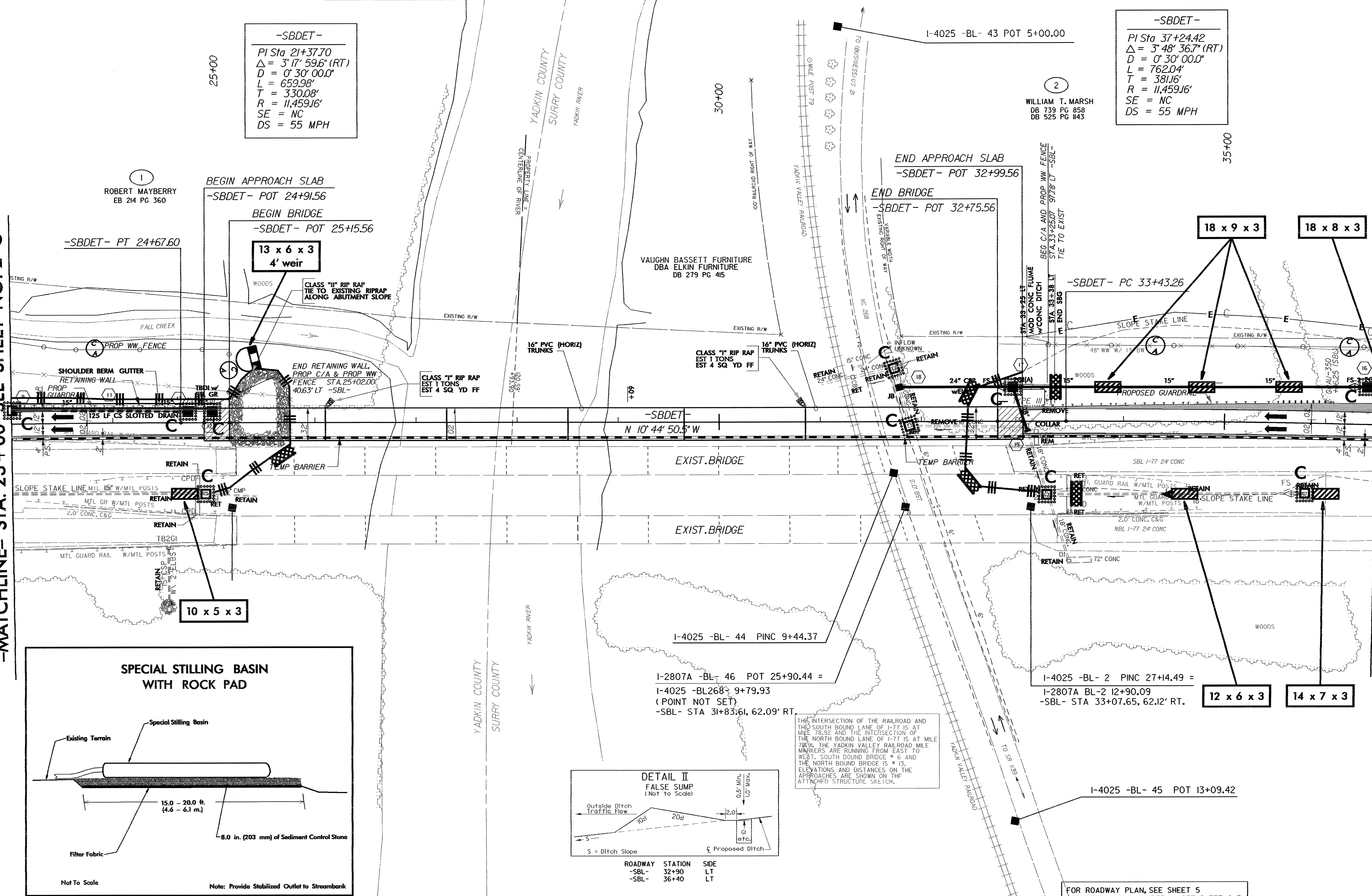
NAD 83 | NC GRID

-SBD E T -  
 PI Sta 21+37.70  
 $\Delta = 3' 17'' 59.6'' (RT)$   
 $D = 0' 30'' 00.0''$   
 $L = 659.98'$   
 $T = 330.08'$   
 $R = 11,459.16'$   
 $SE = NC$   
 $DS = 55 MPH$

-SBD E T -  
 PI Sta 37+24.42  
 $\Delta = 3' 48'' 36.7'' (RT)$   
 $D = 0' 30'' 00.0''$   
 $L = 762.04'$   
 $T = 381.16'$   
 $R = 11,459.16'$   
 $SE = NC$   
 $DS = 55 MPH$

-MATCHLINE- STA. 23+00 SEE SHEET NO. 2-C

-MATCHLINE- STA. 36+50 SEE SHEET NO. 2-E



ROADWAY	STATION	SIDE
-SBL-	32+90	LT
-SBL-	36+40	LT

THIS INTERSECTION OF THE RAILROAD AND THE SOUTH BOUND LANE OF I-77 IS AT MILE 78.92 AND THE INTERSECTION OF THE NORTH BOUND LANE OF I-77 IS AT MILE 78.94. THE YADKIN VALLEY RAILROAD MILE MARKERS ARE RUNNING FROM EAST TO WEST. SOUTH BOUND BRIDGE # 6 AND THE NORTH BOUND BRIDGE IS # 13. ELEVATIONS AND DISTANCES ON THE APPROACHES ARE SHOWN ON THE ATTACHED STRUCTURE SKETCH.

FOR ROADWAY PLAN, SEE SHEET 5  
 FOR RETAINING WALL DETAIL, SEE SHEET 2-F