

09/08/99

See Sheet 1-A For Index of Sheets
See Sheet 1-B For Conventional Symbols
See Sheet 1-C For Survey Control Sheet

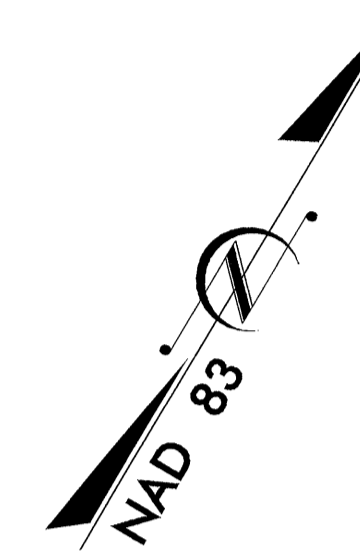
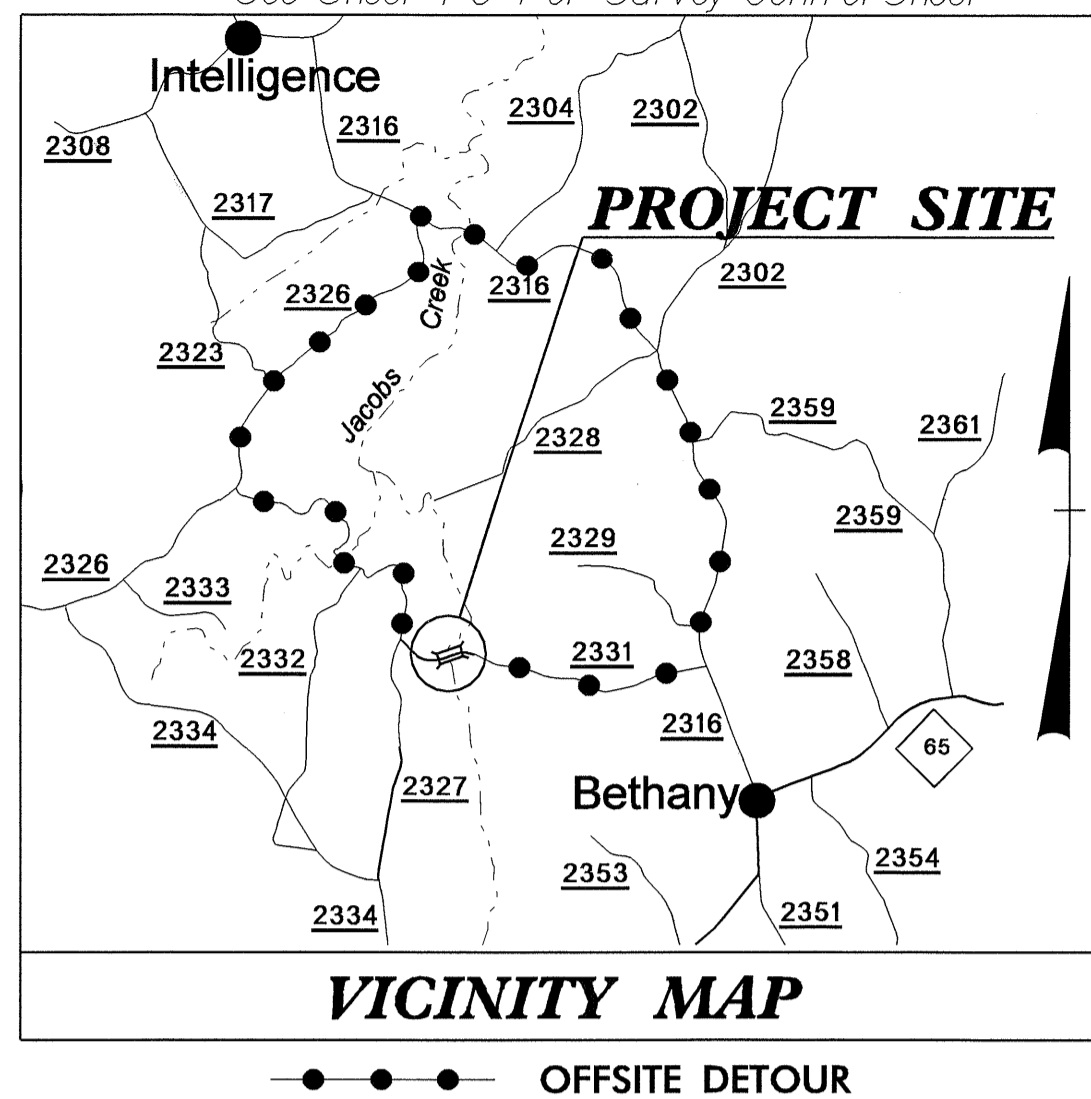
STATE OF NORTH CAROLINA
DIVISION OF HIGHWAYS

STATE	STATE PROJECT REFERENCE NO.	SHEET NO.	TOTAL SHEETS
N.C.	B-3695	1	
STATE PROJ. NO.	F.A. PROJ. NO.	DESCRIPTION	
33235.1.1	BRZ-2331(1)	PE	
33235.3.1	BRZ-2331(1)	R/W, UTIL.	
33235.2.2	BRZ-2331(2)	CONST.	

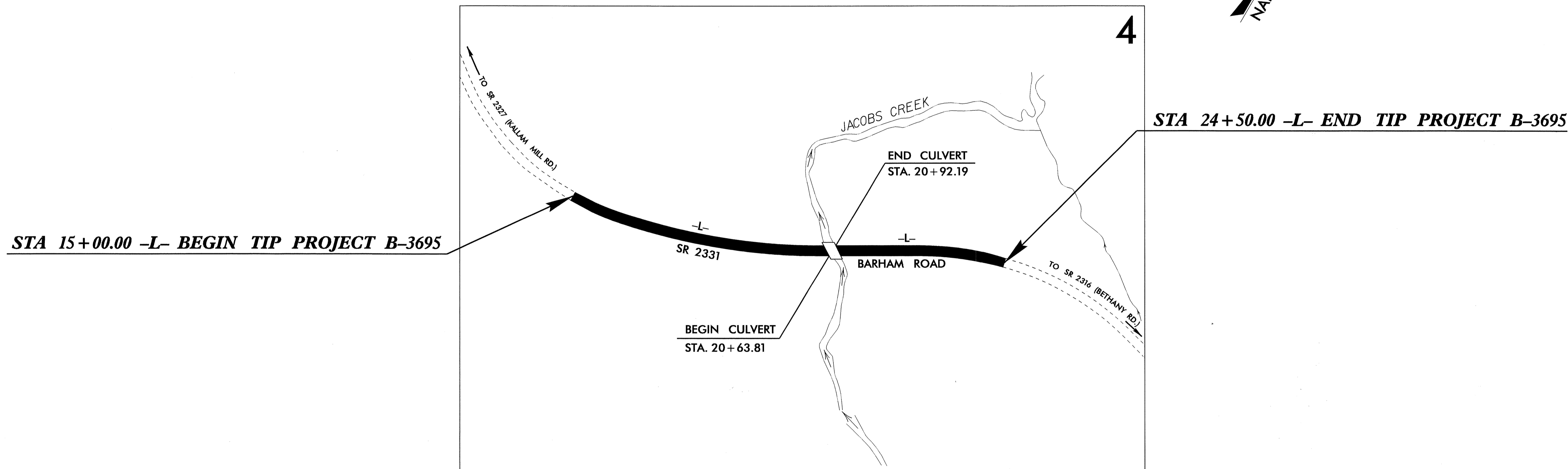
ROCKINGHAM COUNTY

LOCATION: BRIDGE NO. 34 OVER JACOBS CREEK
ON SR 2331 (BARHAM RD.)

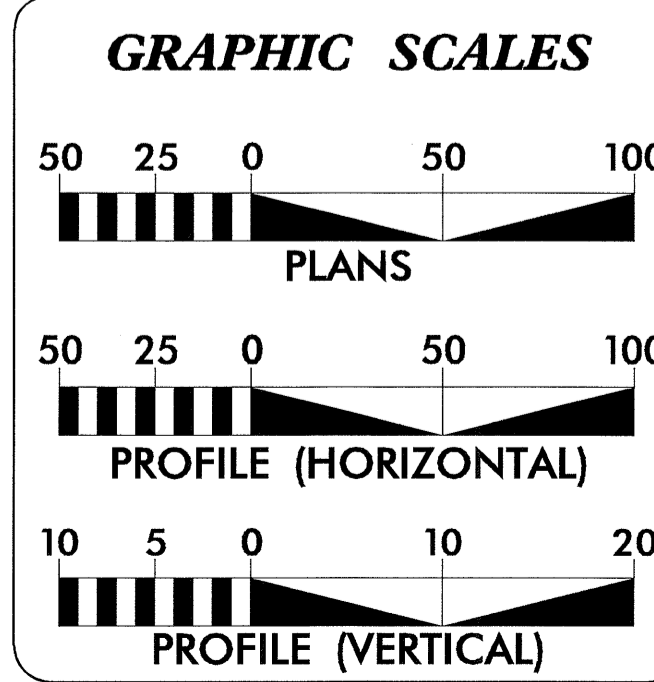
TYPE OF WORK: GRADING, DRAINAGE, PAVING, AND CULVERT



CONTRACT: C201319 TIP PROJECT: B-3695



**DESIGN EXCEPTION REQUIRED FOR DESIGN SPEED



DESIGN DATA

ADT 2004 =	138
ADT 2024 =	292
DHV =	10 %
D =	60 %
T =	3 % *
* TTST	1%+DUAL 2%
** V =	40 MPH
POSTED =	55 MPH (STAT.)

PROJECT LENGTH

LENGTH OF ROADWAY TIP PROJECT B-3695	=	.175 MILES
LENGTH OF STRUCTURE TIP PROJECT B-3695	=	.005 MILES
TOTAL LENGTH OF TIP PROJECT B-3695	=	.180 MILES

Prepared in the Office of:
DIVISION OF HIGHWAYS
1000 Birch Ridge Dr., Raleigh NC, 27610

2002 STANDARD SPECIFICATIONS

RIGHT OF WAY DATE:
SEPTEMBER 26, 2003

LETTING DATE:
NOVEMBER 16, 2004

BRENDA MOORE, P.E.
PROJECT ENGINEER

ROGER KLUCKMAN, P.E.
PROJECT DESIGN ENGINEER

HYDRAULICS ENGINEER
SEAL 18600
RANDALL C. HENNINGER

SIGNATURE: *Randall C. Henninger*
8-5-04

ROADWAY DESIGN ENGINEER
SEAL 19795
BRENDA MOORE

SIGNATURE: *Brenda Moore*
6/30/04

**DIVISION OF HIGHWAYS
STATE OF NORTH CAROLINA**

STATE DESIGN ENGINEER
at miller P.E.

**DEPARTMENT OF TRANSPORTATION
FEDERAL HIGHWAY ADMINISTRATION**

APPROVED
DIVISION ADMINISTRATOR

DATE

14-JUN-2004 12:34
R:\Proj\B3695_rdy_tsh.dgn
twhite