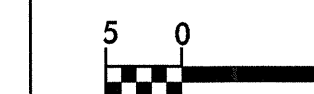


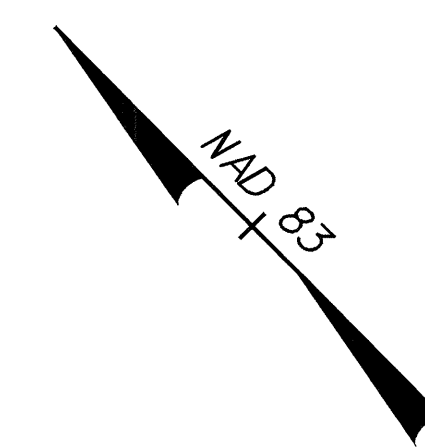
8/17/95



PROJECT REFERENCE NO.	R-05/3A	SHEET NO.	9
R/W SHEET NO.			
ROADWAY DESIGN ENGINEER		HYDRAULICS ENGINEER	
<b>PRELIMINARY PLANS</b> DO NOT USE FOR CONSTRUCTION			
<b>INCOMPLETE PLANS</b> DO NOT USE FOR R/W ACQUISITION			
CONST.REV.			
R/W REV.			



ROBERT M. MORGAN &  
ROBERT M. MORGAN, JR.  
DB 835 PG 679



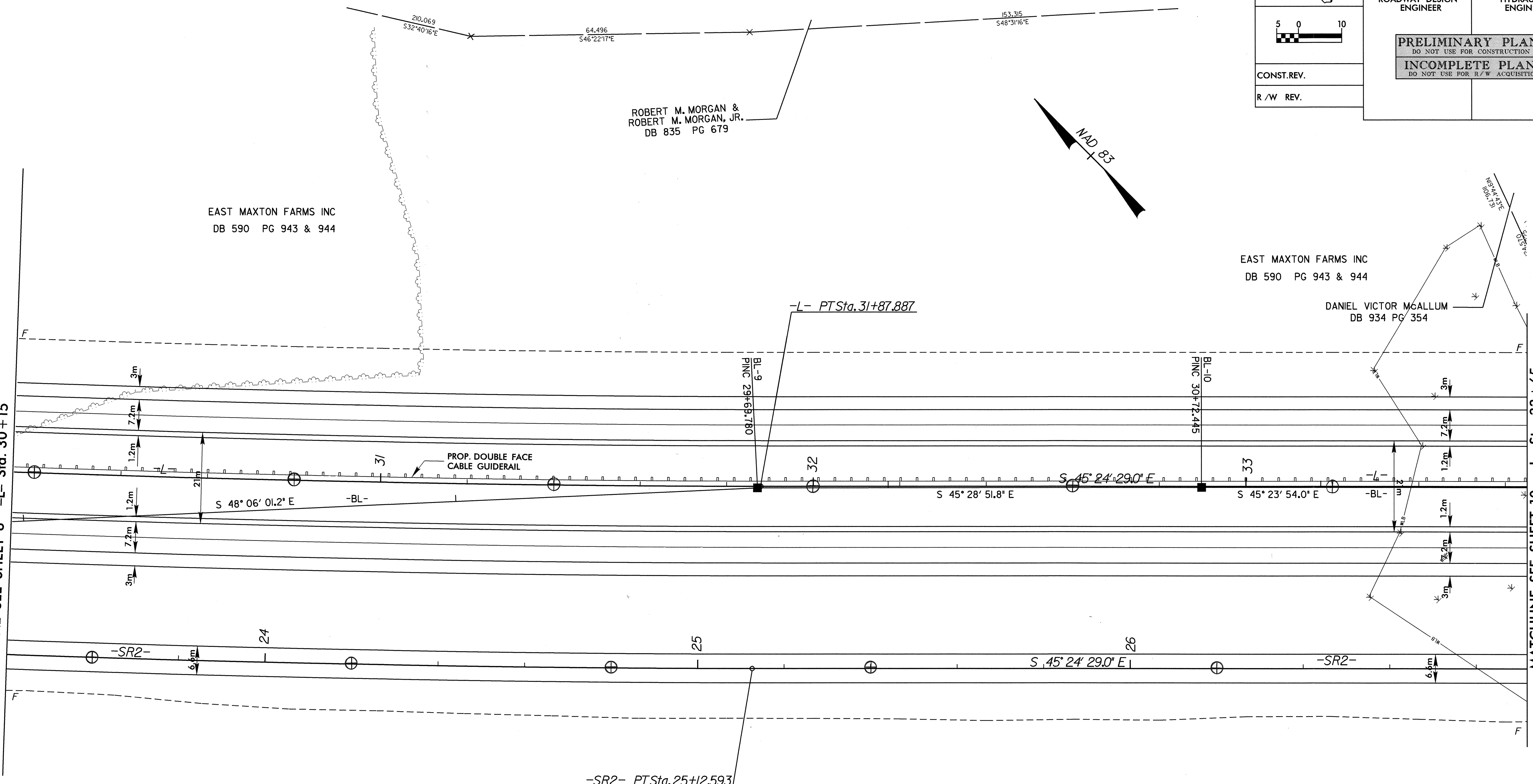
EAST MAXTON FARMS INC  
DB 590 PG 943 & 944

EAST MAXTON FARMS INC  
DB 590 PG 943 & 944

DANIEL VICTOR MCALLUM  
DB 934 PG 354

MATCHLINE SEE SHEET 8 -L- Sta. 30+15

MATCHLINE SEE SHEET 10 -L- Sta. 33+65



EAST MAXTON FARMS INC  
DB 590 PG 943 & 944

EAST MAXTON FARMS INC  
DB 590 PG 943 & 944

-L-	-SR2-
PI Sta. 22+65.663	PI Sta. 22+68.843
$\Delta = 2^\circ 23' 15.7''$ (LT)	$\Delta = 5^\circ 35' 26.8''$ (LT)
L = 1,866.428	L = 487.887
T = 944.204	T = 244.137
R = 5,000.000	R = 5,000.000
SE = NC	

NOTES: FOR PROFILE OF -L- SEE SHEET NO. 33  
FOR PROFILE OF -SR2- SEE SHEET NO. 60 & NO. 61

05-NOV-2000 08:38  
R:\0513A\p-co\1\0513a.dwg