

8/17/95



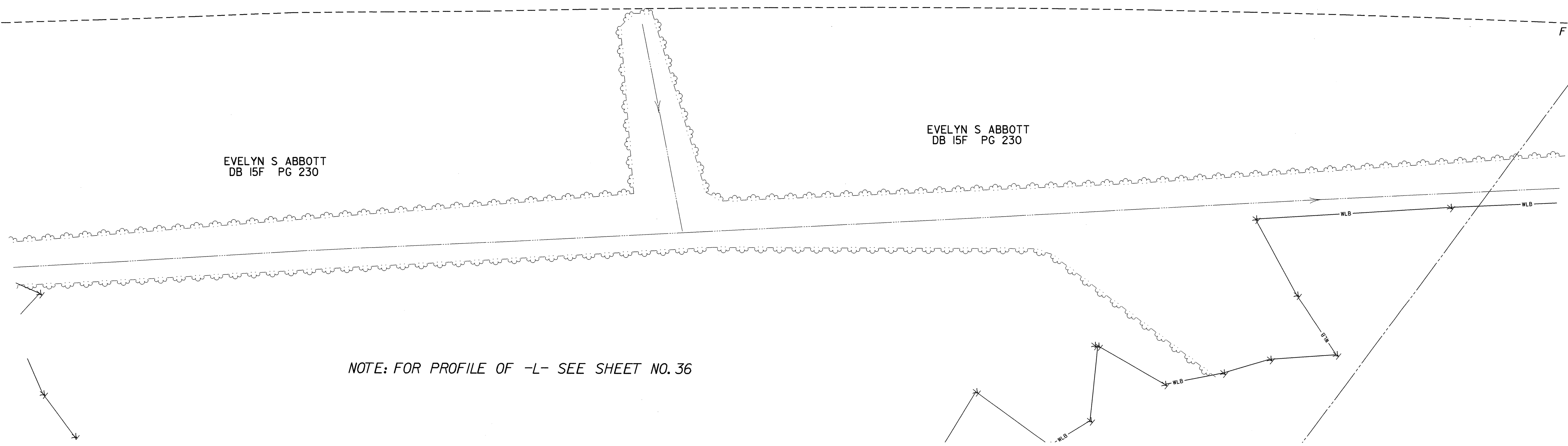
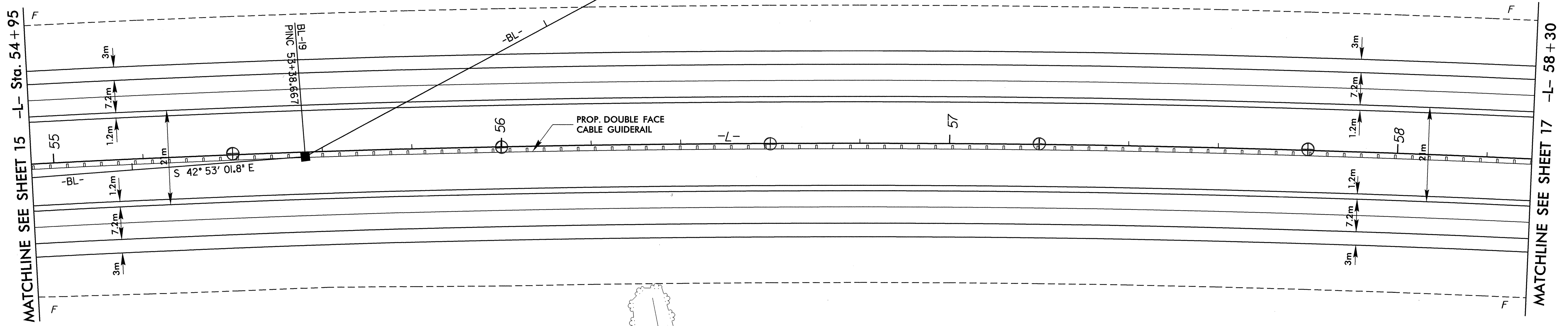
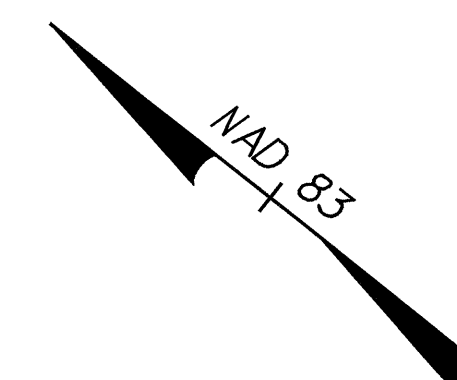
PROJECT REFERENCE NO. R-0513A	SHEET NO. 16
R/W SHEET NO.	
ROADWAY DESIGN ENGINEER	HYDRAULICS ENGINEER
<b>PRELIMINARY PLANS</b> DO NOT USE FOR CONSTRUCTION <b>INCOMPLETE PLANS</b> DO NOT USE FOR R/W ACQUISITION	
CONST. REV.	
R/W REV.	



-L-  
 PI Sta. 56+80.564  
 $\Delta = 13^\circ 53' 46.3" (RT)$   
 $L = 848.870$   
 $T = 426.528$   
 $R = 3,500.000$

EVELYN S ABBOTT  
DB 15F PG 230

EVELYN S ABBOTT  
DB 15F PG 230



EVELYN S ABBOTT  
DB 15F PG 230

EVELYN S ABBOTT  
DB 15F PG 230

NOTE: FOR PROFILE OF -L- SEE SHEET NO. 36

09-NOV-2000 09:37  
R:\0513A\0513A\0513A.dwg  
Abbott