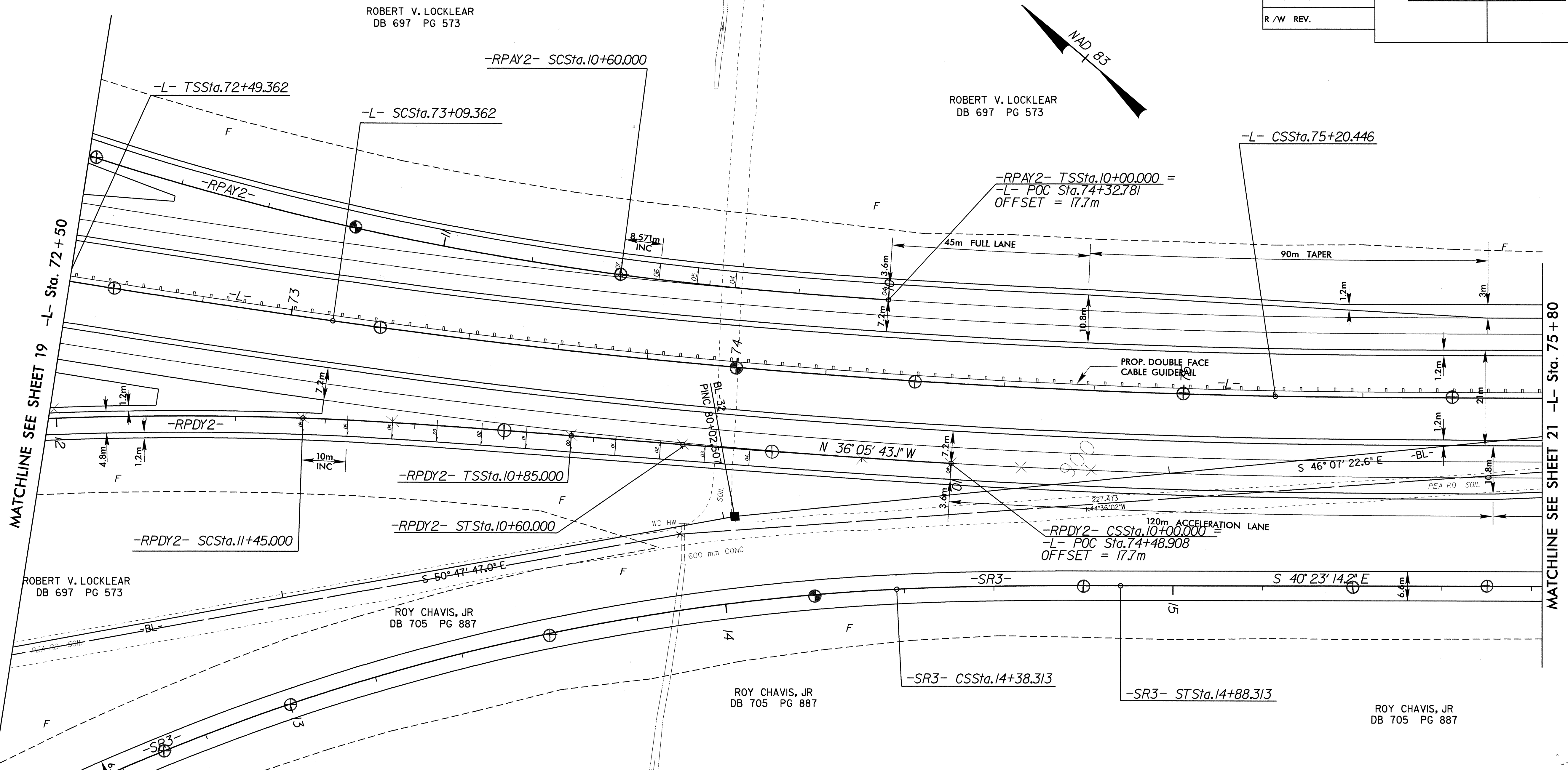
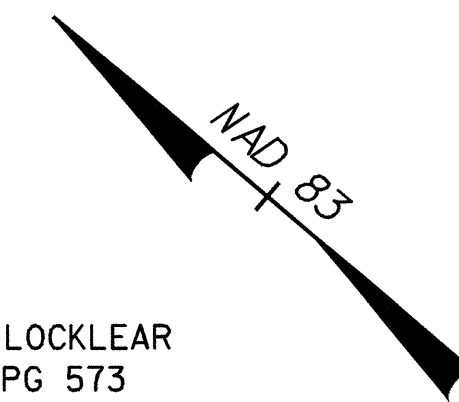
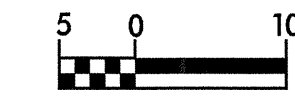




PROJECT REFERENCE NO.	SHEET NO.
R-0513A	20
R/W SHEET NO.	
ROADWAY DESIGN ENGINEER	HYDRAULICS ENGINEER
PRELIMINARY PLANS DO NOT USE FOR CONSTRUCTION INCOMPLETE PLANS DO NOT USE FOR R/W ACQUISITION	
CONST. REV.	
R/W REV.	



MATCHLINE SEE SHEET 19 -L- Sta. 72+50

MATCHLINE SEE SHEET 21 -L- Sta. 75+80

ROBERT V. LOCKLEAR
DB 697 PG 573

ROBERT V. LOCKLEAR
DB 697 PG 573

ROBERT V. LOCKLEAR
DB 697 PG 573

ROY CHAVIS, JR
DB 705 PG 887

ROY CHAVIS, JR
DB 705 PG 887

ROY CHAVIS, JR
DB 705 PG 887

ROY CHAVIS, JR
DB 705 PG 887

-RPDY2-

Pls Sta 11+25.003	Pls Sta 10+20.001
$\theta_s = 2^\circ 17' 30.6''$	$\theta_s = 0^\circ 58' 20.6''$
Ls = 60.000	Ls = 60.000
LT = 40.003	LT = 40.001
ST = 20.003	ST = 20.001

-SR3-

Pls Sta 11+63.338	Pls Sta 13+12.108	Pls Sta 14+54.983
$\theta_s = 2^\circ 51' 53.2''$	$\Delta = 29^\circ 36' 01.7''$ (RT)	$\theta_s = 2^\circ 51' 53.2''$
Ls = 50.000	L = 258.313	Ls = 50.000
LT = 33.338	T = 132.108	LT = 33.338
ST = 16.671	R = 500.000	ST = 16.671
	SE = 0.06	

-L-

Pls Sta 74+15.032	Pls Sta 75+40.446
$\Delta = 6^\circ 54' 39.6''$ (LT)	$\theta_s = 0^\circ 58' 56.0''$
L = 211.084	Ls = 60.000
T = 105.670	LT = 40.001
R = 1,750.000	ST = 20.001
SE = 0.04	

NOTES: FOR PROFILE OF -L- SEE SHEET NO. 38 & NO. 39
 FOR PROFILE OF -RPAY2- SEE SHEET NO. 52
 FOR PROFILE OF -RPDY2- SEE SHEET NO. 55
 FOR PROFILE OF -SR3- SEE SHEET NO. 63 & NO. 64

09-NOV-2000 09:37
 R:\05\5A\PR\01\0513a\20.pch
 8/17/99