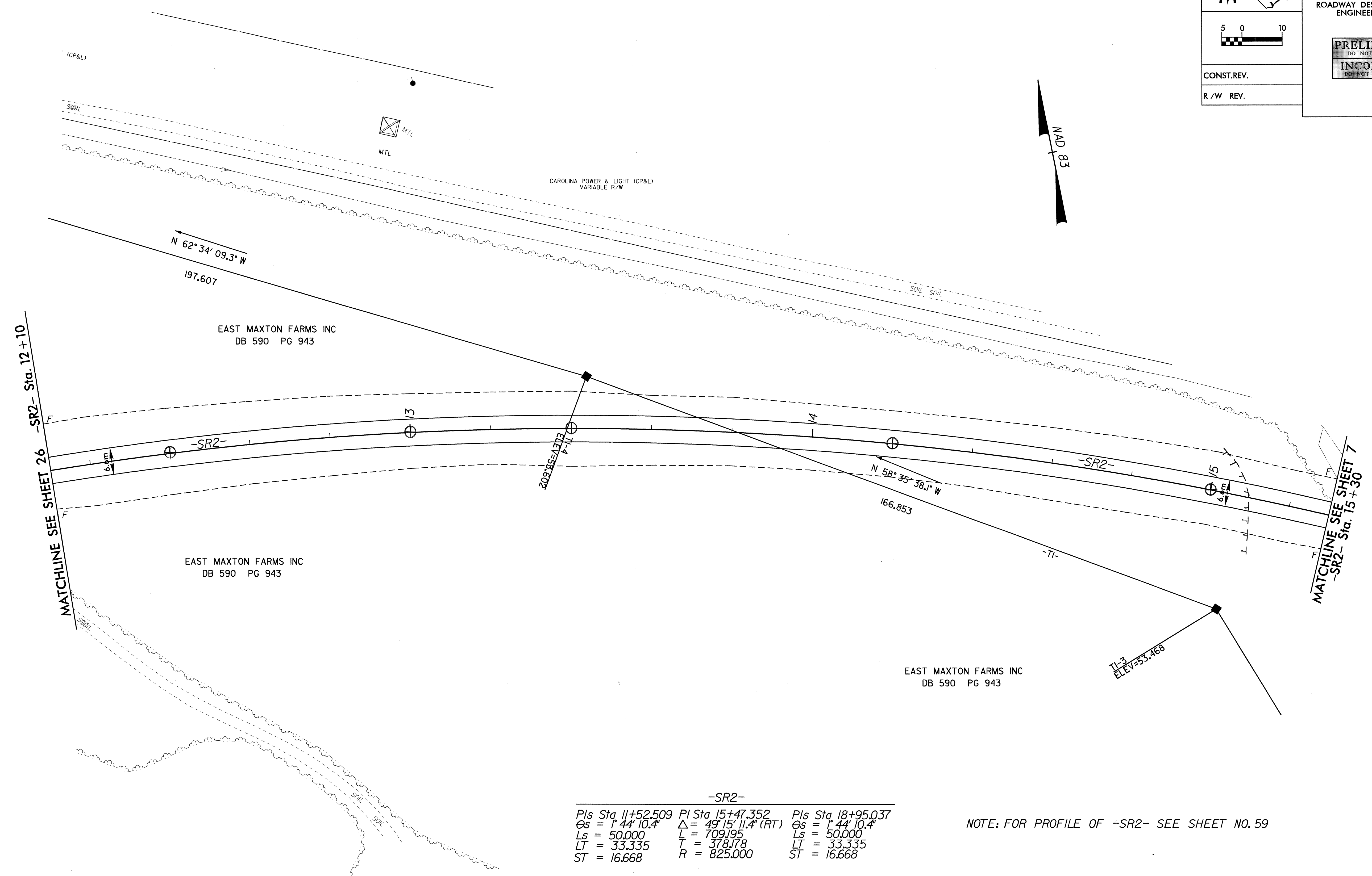
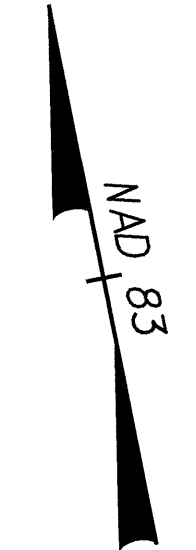
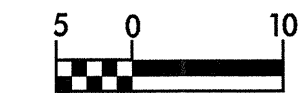


8/17/95



PROJECT REFERENCE NO.	SHEET NO.
R-0513A	27
R/W SHEET NO.	
ROADWAY DESIGN ENGINEER	HYDRAULICS ENGINEER
PRELIMINARY PLANS DO NOT USE FOR CONSTRUCTION	
INCOMPLETE PLANS DO NOT USE FOR R/W ACQUISITION	
CONST. REV.	
R/W REV.	



-SR2-

PIs Sta 11+52.509	PI Sta 15+47.352	PIs Sta 18+95.037
$\Theta_s = 1^{\circ} 44' 10.4''$	$\Delta = 49^{\circ} 15' 11.4''$ (RT)	$\Theta_s = 1^{\circ} 44' 10.4''$
$L_s = 50.000$	$L = 709.195$	$L_s = 50.000$
$LT = 33.335$	$T = 378.178$	$LT = 33.335$
$ST = 16.668$	$R = 825.000$	$ST = 16.668$

NOTE: FOR PROFILE OF -SR2- SEE SHEET NO. 59

09-NOV-2000 09:37
R:\0813A\Pr-j\0813as27.psh
dburnham