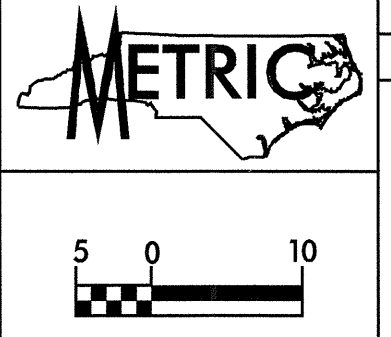


6/09/99

-Y2-

| SOIL SAMPLE TEST RESULTS | | | | | | | | | | | | | | |
|--------------------------|---------|--------|----------------|---------------|----|------|-------------|--------|------|--------------------|-------|-------|------------|-----------|
| SAMPLE NO. | STATION | OFFSET | DEPTH INTERVAL | AASHTO CLASS. | LL | P.I. | % BY WEIGHT | | | % PASSING (SIEVES) | | | % MOISTURE | % ORGANIC |
| | | | | | | | C.SAND | F.SAND | SILT | CLAY | 2.0mm | 425um | | |
| SS-152 | 12+20 | CL | 0.30-1.67 | A-4(1) | 20 | 8 | 24.1 | 32.2 | 13.6 | 30.2 | 100 | 87 | 49 | |
| SS-136 | 13+40 | CL | 0.30-0.45 | A-4(0) | 21 | 3 | 37.6 | 29.8 | 16.5 | 14.1 | 98 | 74 | 37 | |
| SS-137 | 13+40 | CL | 0.76-1.21 | A-2-4(0) | 20 | 6 | 58.4 | 21.5 | 7.0 | 13.1 | 98 | 67 | 23 | |
| SS-138 | 13+40 | CL | 2.28-2.73 | A-3(0) | 7 | NP | 74.7 | 24.7 | 0.5 | 0.0 | 98 | 98 | 1 | |
| SS-128 | 15+45 | CL | 0.30-0.45 | A-6(1) | 27 | 12 | 34.8 | 28.0 | 9.3 | 28.2 | 100 | 78 | 41 | |
| SS-129 | 15+45 | CL | 0.78-1.21 | A-6(2) | 28 | 12 | 19.3 | 41.2 | 7.2 | 32.2 | 100 | 88 | 43 | 17.5 |
| SS-130 | 15+45 | CL | 1.52-1.97 | A-1-4(0) | 19 | NP | 77.7 | 19.5 | 0.8 | 2.0 | 92 | 42 | 3 | |
| SS-131 | 15+45 | CL | 2.59-3.04 | A-6(5) | 33 | 16 | 24.5 | 18.1 | 11.1 | 46.3 | 85 | 83 | 56 | 17.7 |
| SS-132 | 15+45 | CL | 4.11-4.66 | A-3(0) | 19 | NP | 69.5 | 25.1 | 0.4 | 5.0 | 98 | 94 | 6 | |
| SS-133 | 15+45 | CL | 7.16-7.60 | A-3(0) | 20 | NP | 72.3 | 21.8 | 0.8 | 5.0 | 98 | 93 | 6 | |
| SS-134 | 15+45 | CL | 8.69-9.14 | A-2-4(0) | 32 | NP | 61.7 | 23.5 | 7.7 | 7.0 | 91 | 82 | 16 | |
| SS-135 | 15+45 | CL | 10.21-10.66 | A-6(9) | 31 | 15 | 9.7 | 24.7 | 17.3 | 48.3 | 100 | 94 | 72 | |
| SS-1 | 16+60 | 8LT | 0.30-0.45 | A-2-4(0) | 21 | 6 | 53.1 | 20.9 | 9.9 | 16.1 | 99 | 68 | 28 | |
| SS-2 | 16+60 | 8LT | 1.21-1.66 | A-1-4(0) | 15 | NP | 85.1 | 10.6 | 3.2 | 1.0 | 95 | 37 | 4 | |
| SS-3 | 16+60 | 8LT | 4.11-4.56 | A-2-4(0) | 32 | NP | 52.0 | 27.7 | 10.2 | 10.0 | 98 | 67 | 22 | 45.3 |
| SS-4 | 16+60 | 8LT | 5.64-6.09 | A-1-4(0) | 18 | NP | 79.0 | 16.0 | 3.0 | 2.0 | 91 | 34 | 5 | |
| SS-5 | 16+60 | 8LT | 11.73-12.18 | A-2-4(0) | 23 | NP | 63.3 | 23.4 | 3.3 | 10.0 | 98 | 59 | 14 | |
| SS-6 | 16+60 | 8LT | 13.46-13.71 | A-6(17) | 38 | 17 | 2.6 | 7.0 | 34.1 | 56.2 | 100 | 98 | 94 | |
| SS-7 | 16+60 | 8LT | 14.78-15.23 | A-4(1) | 23 | 8 | 16.3 | 40.0 | 21.7 | 22.1 | 100 | 85 | 47 | |
| SS-8 | 16+60 | 8LT | 17.83-18.28 | A-6(14) | 38 | 18 | 12.0 | 9.2 | 16.5 | 62.2 | 100 | 94 | 81 | |
| SS-9 | 16+60 | 8LT | 19.55-19.90 | A-7-6(24) | 49 | 23 | 4.6 | 6.0 | 19.1 | 70.3 | 100 | 97 | 81 | |
| SS-10 | 16+60 | 8LT | 20.89-21.33 | A-4(2) | 24 | 9 | 20.9 | 34.8 | 20.5 | 24.1 | 100 | 92 | 51 | |
| SS-11 | 16+60 | 8LT | 23.93-24.38 | A-2-4(0) | 18 | NP | 33.6 | 50.9 | 5.4 | 10.0 | 100 | 86 | 16 | |
| SS-12 | 16+60 | 8LT | 25.45-25.90 | A-1-4(0) | 19 | NP | 68.9 | 20.7 | 5.4 | 5.0 | 98 | 49 | 12 | |



PROJECT REFERENCE NO. R-0513A SHEET NO. 50

ROADWAY DESIGN ENGINEER HYDRAULICS ENGINEER

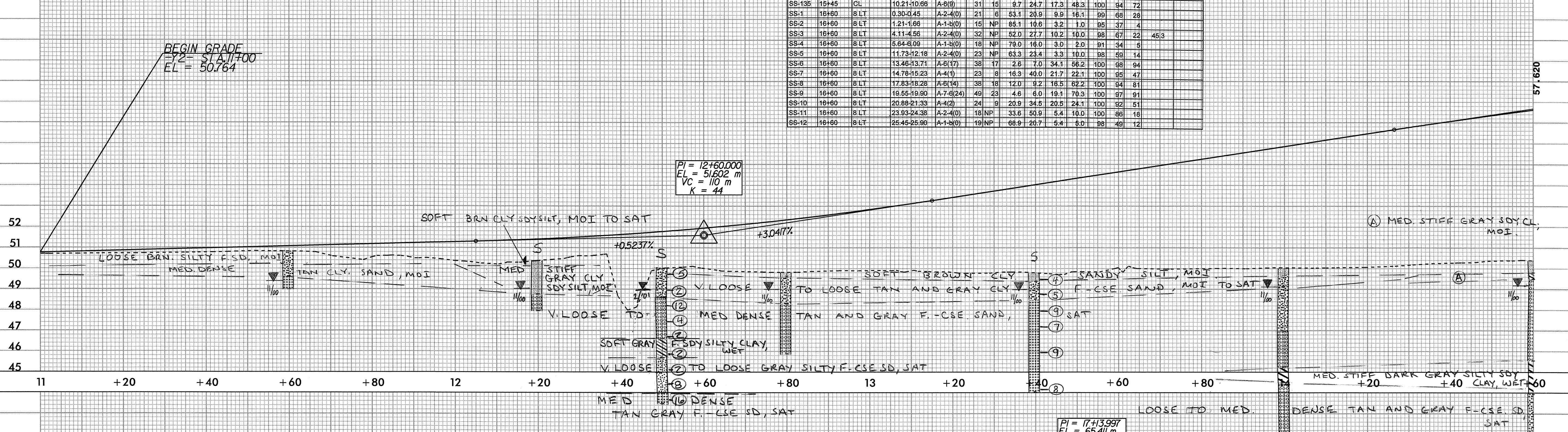
INCOMPLETE PLANS
DO NOT USE FOR R/W ACQUISITION

PRELIMINARY PLANS
DO NOT USE FOR CONSTRUCTION

CONST. REV.
R/W REV.

BEGIN GRADE -Y2- STA. 11+700 EL = 50.764

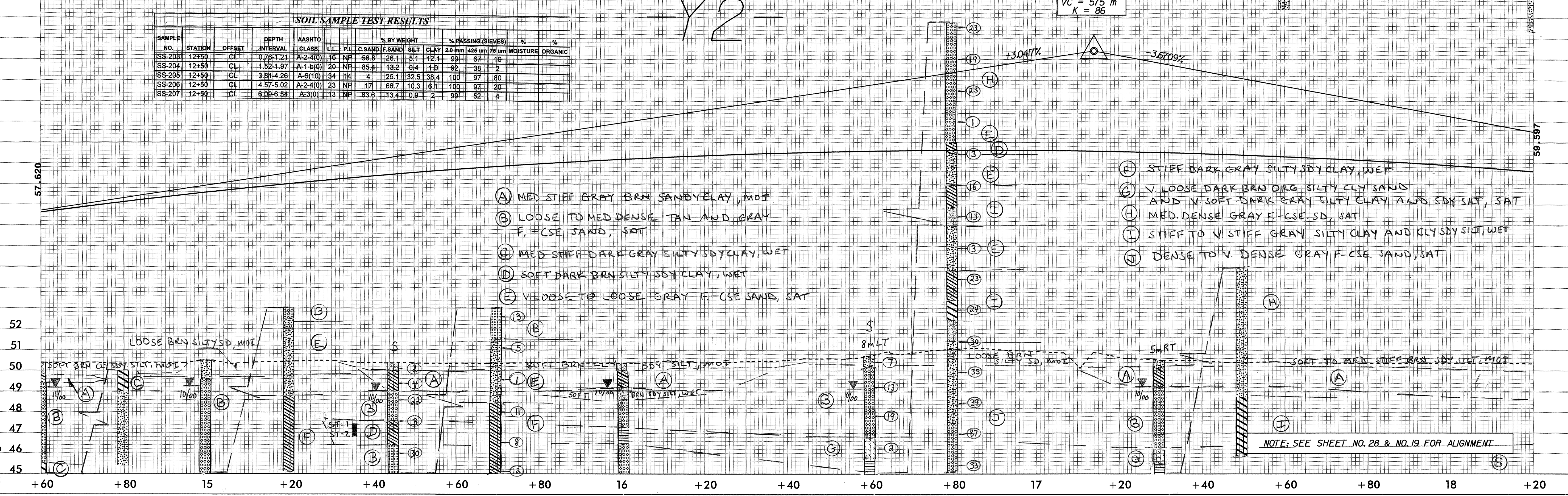
PI = 12+60.000 EL = 51.602 m VC = 110 m K = 44



| SOIL SAMPLE TEST RESULTS | | | | | | | | | | | | | | |
|--------------------------|---------|--------|----------------|---------------|----|------|-------------|--------|------|--------------------|--------|--------|------------|-----------|
| SAMPLE NO. | STATION | OFFSET | DEPTH INTERVAL | AASHTO CLASS. | LL | P.I. | % BY WEIGHT | | | % PASSING (SIEVES) | | | % MOISTURE | % ORGANIC |
| | | | | | | | C.SAND | F.SAND | SILT | CLAY | 2.0 mm | 425 um | | |
| SS-203 | 12+50 | CL | 0.76-1.21 | A-2-4(0) | 16 | NP | 56.8 | 26.1 | 5.1 | 12.1 | 99 | 67 | 19 | |
| SS-204 | 12+50 | CL | 1.52-1.97 | A-1-b(0) | 20 | NP | 85.4 | 13.2 | 0.4 | 1.0 | 92 | 38 | 2 | |
| SS-205 | 12+50 | CL | 3.81-4.26 | A-6(10) | 34 | 14 | 4 | 25.1 | 32.5 | 38.4 | 100 | 97 | 80 | |
| SS-206 | 12+50 | CL | 4.57-5.02 | A-2-4(0) | 23 | NP | 17 | 66.7 | 10.3 | 6.1 | 100 | 97 | 20 | |
| SS-207 | 12+50 | CL | 6.09-6.54 | A-3(0) | 13 | NP | 83.6 | 13.4 | 0.9 | 2 | 99 | 52 | 4 | |

-Y2-

PI = 17+13.997 EL = 65.411 m VC = 575 m K = 86



- (A) MED STIFF GRAY BRN SANDY CLAY, MOI
- (B) LOOSE TO MED DENSE TAN AND GRAY F.-CSE SAND, SAT
- (C) MED STIFF DARK GRAY SILTY SDY CLAY, WET
- (D) SOFT DARK BRN SILTY SDY CLAY, WET
- (E) V LOOSE TO LOOSE GRAY F.-CSE SAND, SAT

- (F) STIFF DARK GRAY SILTY SDY CLAY, WET
- (G) V LOOSE DARK BRN ORG SILTY CLY SAND AND V. SOFT DARK GRAY SILTY CLAY AND SDY SILT, SAT
- (H) MED. DENSE GRAY F.-CSE. SD, SAT
- (I) STIFF TO V. STIFF GRAY SILTY CLAY AND CLY SDY SILT, WET
- (J) DENSE TO V. DENSE GRAY F.-CSE SAND, SAT

NOTE: SEE SHEET NO. 28 & NO. 19 FOR ALIGNMENT

09-NOV-2000 09:36
r:\r0513a\proj\r0513a.pfl
aburney