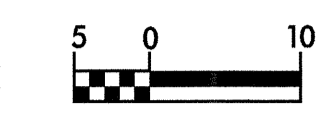
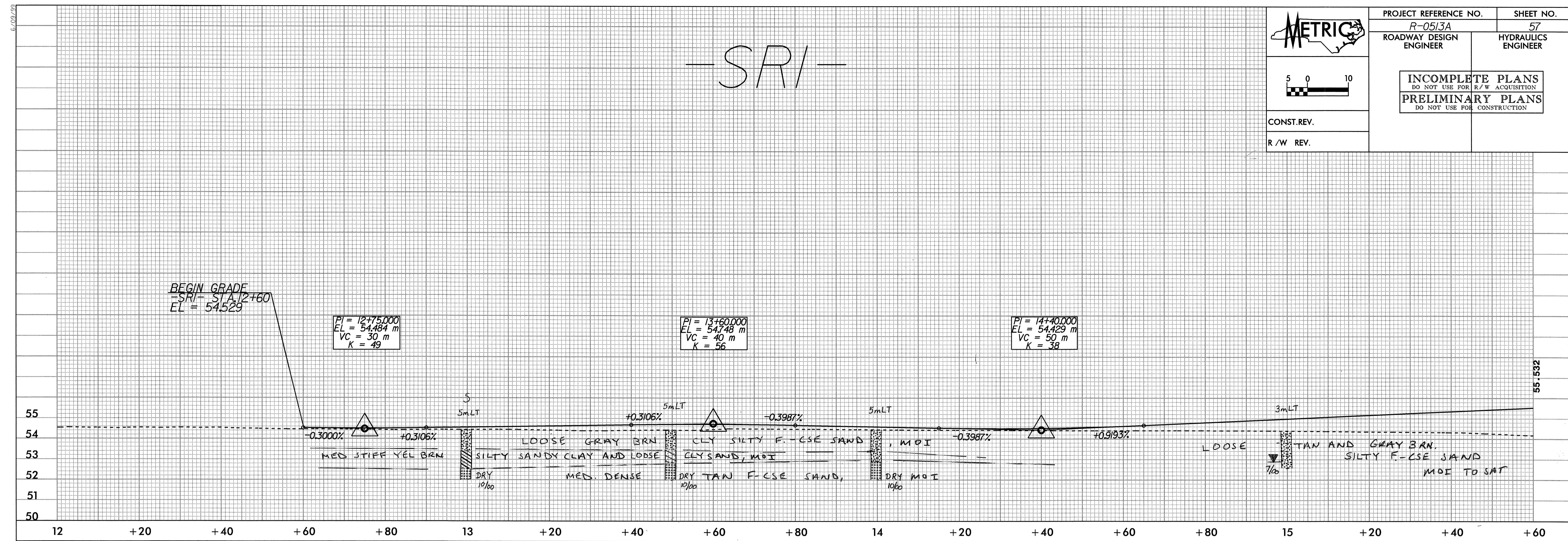




PROJECT REFERENCE NO. R-0513A	SHEET NO. 57
ROADWAY DESIGN ENGINEER	HYDRAULICS ENGINEER
INCOMPLETE PLANS DO NOT USE FOR R/W ACQUISITION PRELIMINARY PLANS DO NOT USE FOR CONSTRUCTION	
CONST. REV.	
R/W REV.	



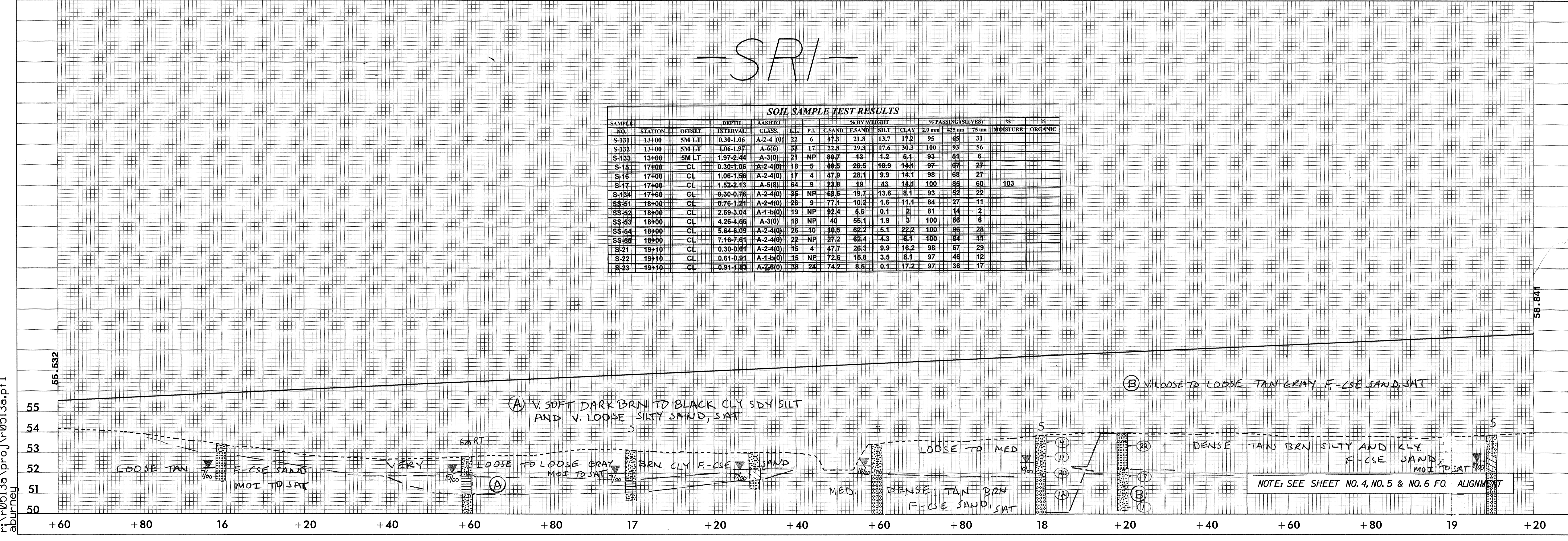
-SRI-



-SRI-

SOIL SAMPLE TEST RESULTS

SAMPLE NO.	STATION	OFFSET	DEPTH INTERVAL	AASHTO CLASS.	L.L.	P.L.	% BY WEIGHT			% PASSING (SIEVES)			MOISTURE %	ORGANIC %	
							CSAND	F-SAND	SILT	CLAY	2.0 mm	425 um			75 um
S-131	13+00	5M LT	0.30-1.06	A-2-4(0)	22	6	47.3	21.8	13.7	17.2	95	65	31		
S-132	13+00	5M LT	1.06-1.97	A-6(6)	33	17	22.8	29.3	17.6	30.3	100	93	56		
S-133	13+00	5M LT	1.97-2.44	A-3(0)	21	NP	80.7	13	1.2	5.1	93	51	6		
S-15	17+00	CL	0.30-1.06	A-2-4(0)	18	5	48.5	28.5	10.9	14.1	97	67	27		
S-16	17+00	CL	1.06-1.56	A-2-4(0)	17	4	47.9	28.1	9.9	14.1	98	68	27		
S-17	17+00	CL	1.52-2.13	A-5(8)	64	9	23.8	19	43	14.1	100	85	60	103	
S-134	17+00	CL	0.30-0.76	A-2-4(0)	35	NP	58.6	19.7	13.6	8.1	93	52	22		
SS-51	18+00	CL	0.76-1.21	A-2-4(0)	26	9	77.1	10.2	1.6	11.1	84	27	11		
SS-52	18+00	CL	2.59-3.04	A-1-b(0)	19	NP	92.4	6.5	0.1	2	81	14	2		
SS-53	18+00	CL	4.26-4.56	A-3(0)	18	NP	40	55.1	1.9	3	100	86	6		
SS-54	18+00	CL	5.64-6.09	A-2-4(0)	26	10	10.5	62.2	5.1	22.2	100	96	28		
SS-55	18+00	CL	7.16-7.61	A-2-4(0)	22	NP	27.2	62.4	4.3	6.1	100	84	11		
S-21	19+10	CL	0.30-0.61	A-2-4(0)	15	4	47.7	26.3	9.9	16.2	98	67	29		
S-22	19+10	CL	0.61-0.91	A-1-b(0)	15	NP	72.6	15.8	3.5	8.1	97	46	12		
S-23	19+10	CL	0.91-1.83	A-2-6(0)	38	24	74.2	8.5	0.1	17.2	97	36	17		



NOTE: SEE SHEET NO. 4, NO. 5 & NO. 6 FOR ALIGNMENT

09-NOV-2000 09:36
r:\r0513a\proj\0513a.pfl
aburney