

8/17/20

**METRIC**

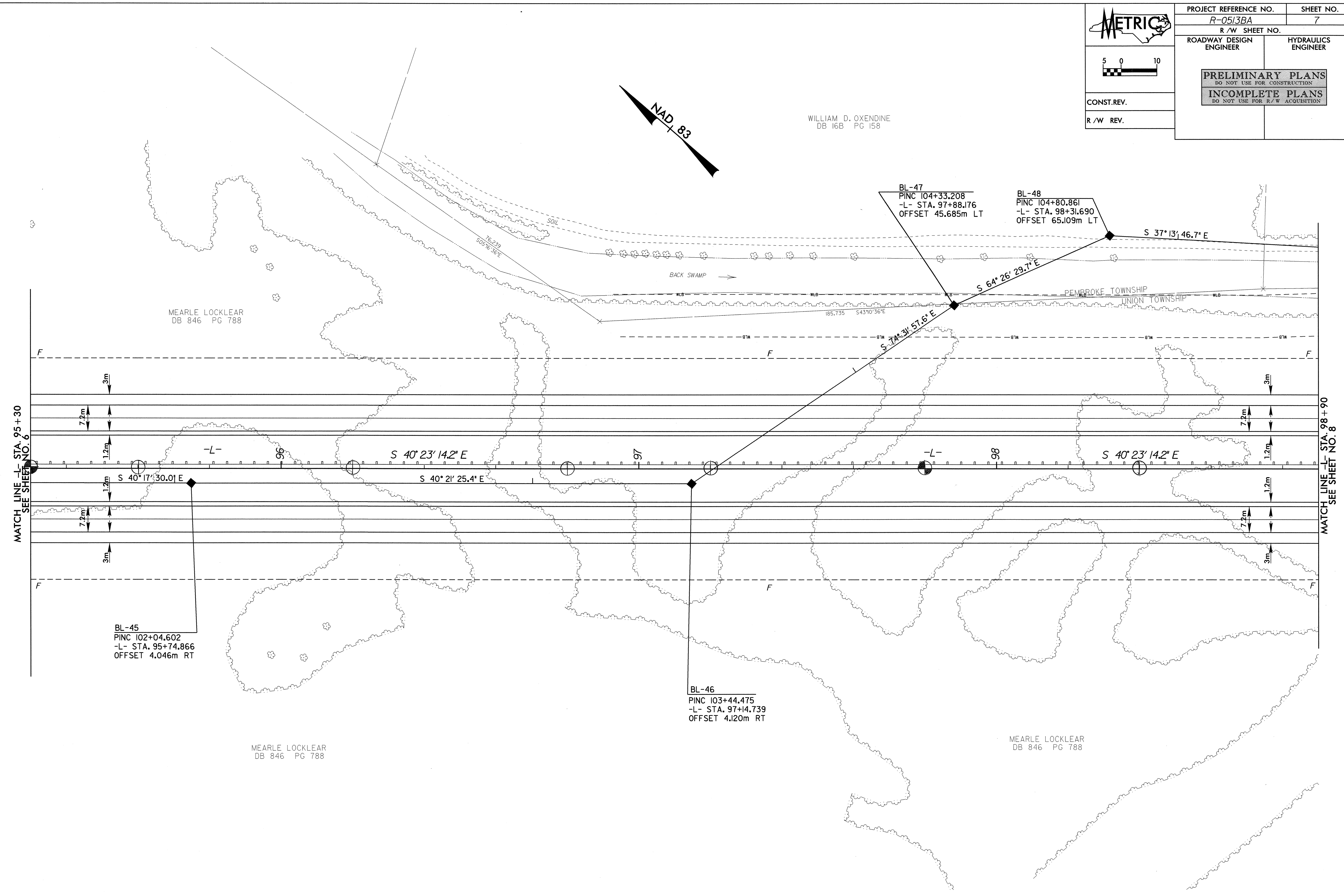
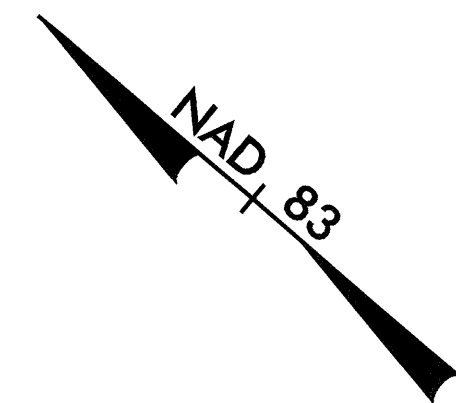
5 0 10

CONST. REV.

R/W REV.

PROJECT REFERENCE NO. R-0513BA	SHEET NO. 7
R/W SHEET NO.	
ROADWAY DESIGN ENGINEER	HYDRAULICS ENGINEER
<b>PRELIMINARY PLANS</b> DO NOT USE FOR CONSTRUCTION <b>INCOMPLETE PLANS</b> DO NOT USE FOR R/W ACQUISITION	

WILLIAM D. OXENDINE  
DB 16B PG 158



MEARLE LOCKLEAR  
DB 846 PG 788

BL-45  
 PINC 102+04.602  
 -L- STA. 95+74.866  
 OFFSET 4.046m RT

BL-46  
 PINC 103+44.475  
 -L- STA. 97+14.739  
 OFFSET 4.120m RT

BL-47  
 PINC 104+33.208  
 -L- STA. 97+88.176  
 OFFSET 45.685m LT

BL-48  
 PINC 104+80.861  
 -L- STA. 98+31.690  
 OFFSET 65.109m LT

MEARLE LOCKLEAR  
DB 846 PG 788

MEARLE LOCKLEAR  
DB 846 PG 788

MATCH LINE -L- STA. 95+30  
SEE SHEET NO. 6

MATCH LINE -L- STA. 98+90  
SEE SHEET NO. 8

20-DEC-2020 15:37  
R:\066138A\p01\0513BAS07.PSH

NOTE: FOR PROFILE OF -L-, SEE SHEET NO. 28