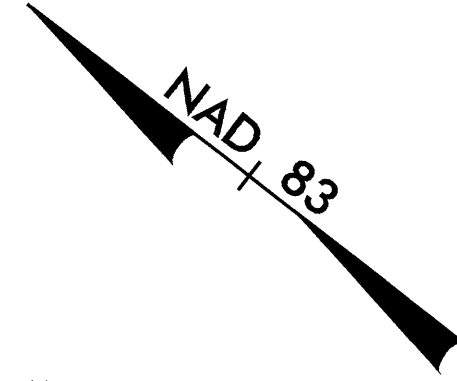
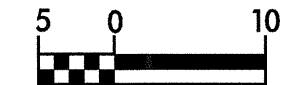


8/17/99



PROJECT REFERENCE NO. R-05/3BA	SHEET NO. 24
R/W SHEET NO.	
ROADWAY DESIGN ENGINEER	HYDRAULICS ENGINEER
<b>PRELIMINARY PLANS</b> DO NOT USE FOR CONSTRUCTION	
<b>INCOMPLETE PLANS</b> DO NOT USE FOR R/W ACQUISITION	
CONST. REV.	
R/W REV.	

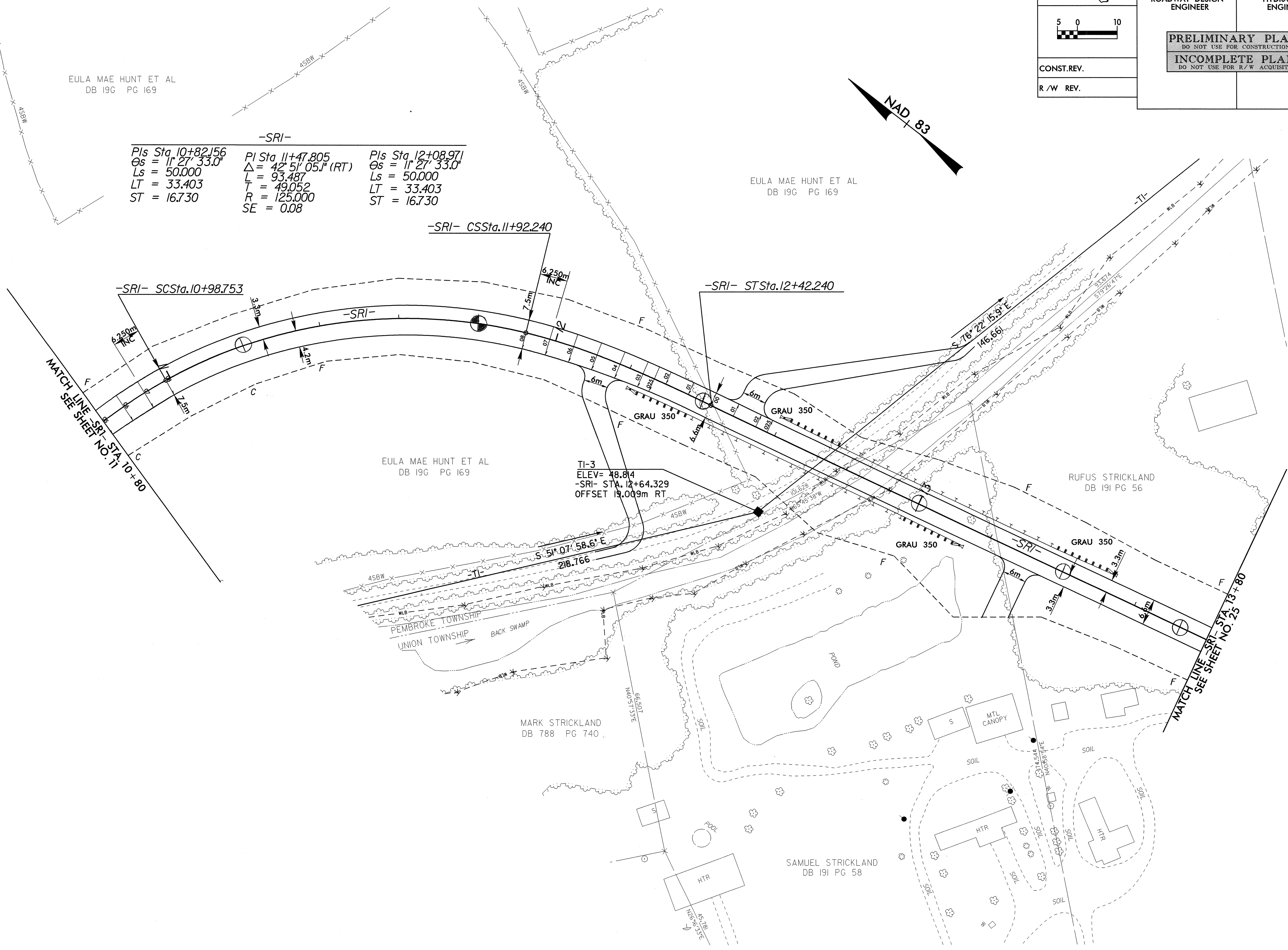


EULA MAE HUNT ET AL  
DB 19G PG 169

EULA MAE HUNT ET AL  
DB 19G PG 169

-SRI-

PIs Sta. 10+82.156 Os = 11° 27' 33.0"	PI Sta. 11+47.805 Δ = 42° 51' 05.1" (RT) L = 93.487 T = 49.052 R = 125.000 SE = 0.08	PIs Sta. 12+08.971 Os = 11° 27' 33.0" Ls = 50.000 LT = 33.403 ST = 16.730
--	---	---



24-196-000 1932  
A:\m\m\24-196-000\1932.dwg  
8/17/99

NOTE: FOR PROFILE OF -SRI-, SEE SHEET NO. 42