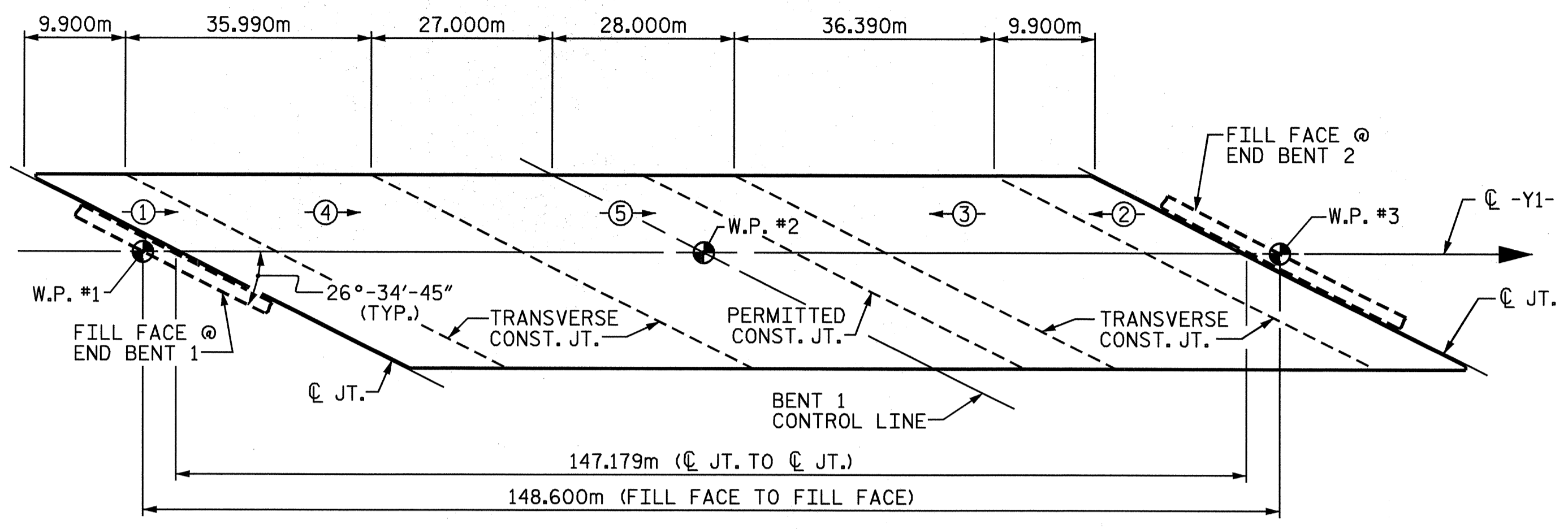
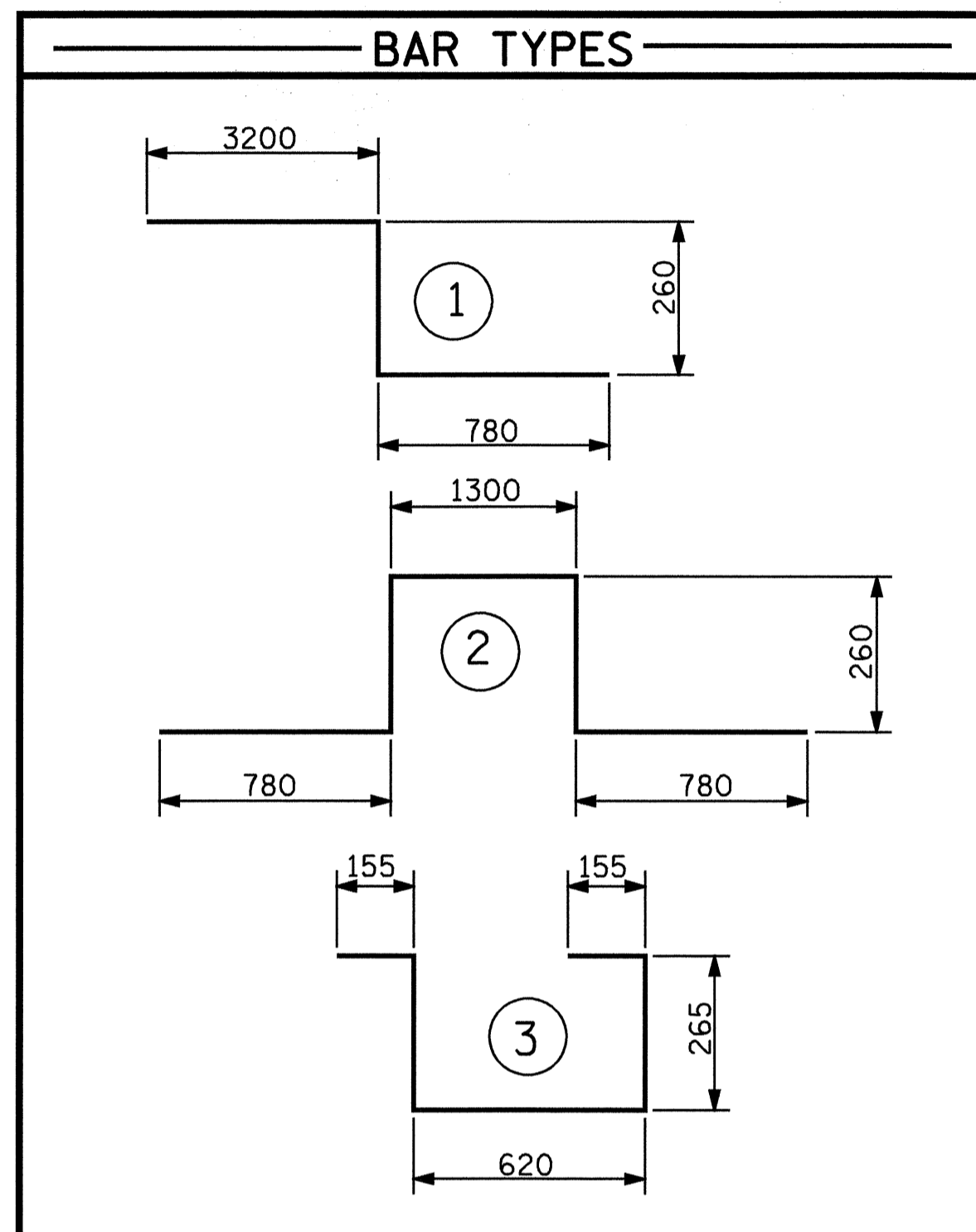


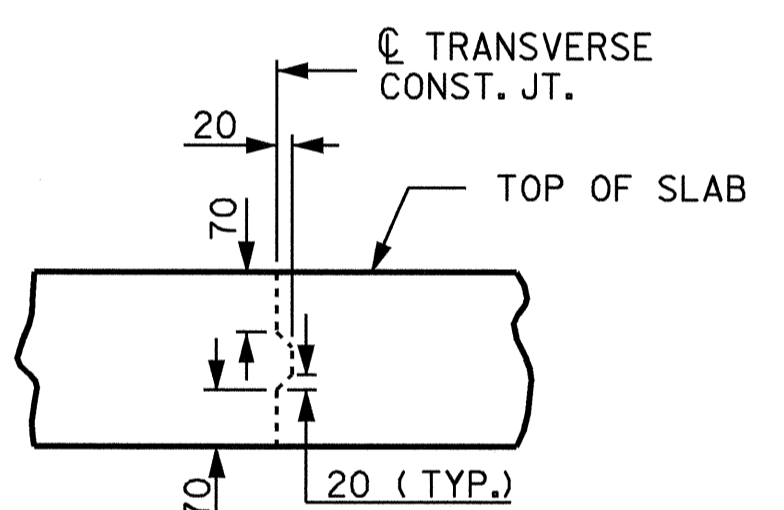
### REINFORCING BAR SCHEDULE

BAR NO.	SIZE	TYPE	LENGTH	WEIGHT	BAR NO.	SIZE	TYPE	LENGTH	WEIGHT	BAR NO.	SIZE	TYPE	LENGTH	WEIGHT			
* A1	769	16	STR	15880	18953	A201	8	16	STR	15540	193	* G1	6	16	STR	12340	115
A2	769	16	STR	15880	18953	A202	8	16	STR	15240	189	* K1	12	16	1	4240	79
* A3	6	22	STR	10860	198	A203	8	16	STR	14940	185	* K2	18	16	2	3380	94
A4	6	22	STR	10860	198	A204	8	16	STR	14640	182	K3	24	16	STR	6300	235
* A101 8 16 STR 15540 193    A206 8 16 STR 14040 174 * A102 8 16 STR 15240 189    A207 8 16 STR 13740 171 * A103 8 16 STR 14940 185    A208 8 16 STR 13440 167 * A104 8 16 STR 14640 182    A209 8 16 STR 13140 163 * A105 8 16 STR 14340 178    A210 8 16 STR 12840 159 * A106 8 16 STR 14040 174    A211 8 16 STR 12540 156 * A107 8 16 STR 13740 171    A212 8 16 STR 12240 152 * A108 8 16 STR 13440 167    A213 8 16 STR 11940 148 * A109 8 16 STR 13140 163    A214 8 16 STR 11640 145 * A110 8 16 STR 12840 159    A215 8 16 STR 11340 141 * A111 8 16 STR 12540 156    A216 8 16 STR 11040 137 * A112 8 16 STR 12240 152    A217 8 16 STR 10740 133 * A113 8 16 STR 11940 148    A218 8 16 STR 10440 130 * A114 8 16 STR 11640 145    A219 8 16 STR 10140 126 * A115 8 16 STR 11340 141    A220 8 16 STR 9840 122 * A116 8 16 STR 11040 137    A221 8 16 STR 9540 118 * A117 8 16 STR 10740 133    A222 8 16 STR 9240 115 * A118 8 16 STR 10440 130    A223 8 16 STR 8940 111 * A119 8 16 STR 10140 126    A224 8 16 STR 8640 107 * A120 8 16 STR 9840 122    A225 8 16 STR 8340 104 * A121 8 16 STR 9540 118    A226 8 16 STR 8040 100 * A122 8 16 STR 9240 115    A227 8 16 STR 7740 96 * A123 8 16 STR 8940 111    A228 8 16 STR 7440 92 * A124 8 16 STR 8640 107    A229 8 16 STR 7140 89 * A125 8 16 STR 8340 104    A230 8 16 STR 6840 85 * A126 8 16 STR 8040 100    A231 8 16 STR 6540 81 * A127 8 16 STR 7740 96    A232 8 16 STR 6240 77 * A128 8 16 STR 7440 92    A233 8 16 STR 5940 74 * A129 8 16 STR 7140 89    A234 8 16 STR 5640 70 * A130 8 16 STR 6840 85    A235 8 16 STR 5340 66 * A131 8 16 STR 6540 81    A236 8 16 STR 5040 63 * A132 8 16 STR 6240 77    A237 8 16 STR 4740 59 * A133 8 16 STR 5940 74    A238 8 16 STR 4440 55 * A134 8 16 STR 5640 70    A239 8 16 STR 4140 51 * A135 8 16 STR 5340 66    A240 8 16 STR 3840 48 * A136 8 16 STR 5040 63    A241 8 16 STR 3540 44 * A137 8 16 STR 4740 59    A242 8 16 STR 3240 40 * A138 8 16 STR 4440 55    A243 8 16 STR 2940 37 * A139 8 16 STR 4140 51    A244 8 16 STR 2640 33 * A140 8 16 STR 3840 48    A245 8 16 STR 2340 29 * A141 8 16 STR 3540 44    A246 8 16 STR 2040 25 * A142 8 16 STR 3240 40    A247 8 16 STR 1740 22 * A143 8 16 STR 2940 37    A248 8 16 STR 1440 18 * A144 8 16 STR 2640 33    A249 8 16 STR 1140 14 * A145 8 16 STR 2340 29    A250 8 16 STR 840 10 * A146 8 16 STR 2040 25    * B1 228 13 STR 9000 2040 * A147 8 16 STR 1740 22    * B2 219 22 STR 15900 10593 * A148 8 16 STR 1440 18    * B3 266 13 STR 8080 2136 * A149 8 16 STR 1140 14    B4 576 16 STR 16920 15126 * A150 8 16 STR 840 10																	



**POURING SEQUECE**  
○ DENOTES POUR NUMBER AND DIRECTION OF POUR

CONCRETE QUANTITY BREAKDOWN				
POUR 1	POUR 2	POUR 3	POUR 4	POUR 5
46.2 CUBIC METERS	46.2 CUBIC METERS	154.8 CUBIC METERS	152.5 CUBIC METERS	231.6 CUBIC METERS

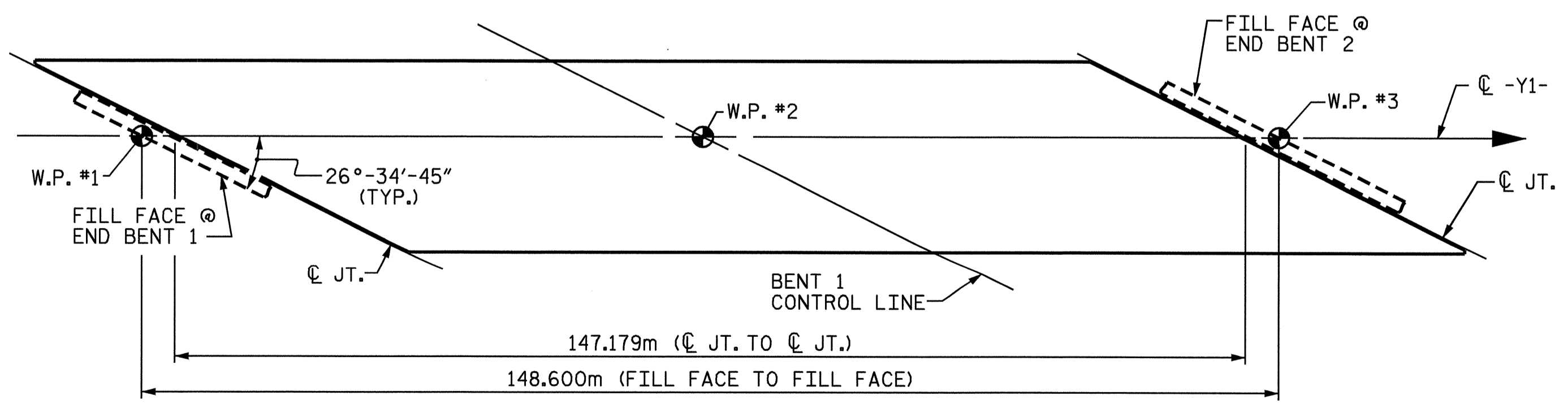


**TRANSVERSE CONSTRUCTION JOINT DETAIL**  
SLAB REINFORCING STEEL SHALL BE CONTINUOUS THRU JOINT

GROOVING BRIDGE FLOORS	
BRIDGE DECK	2070.2 SQ.METER
APPROACH SLABS	270.8 SQ.METER
<b>TOTAL</b>	<b>2341.0 SQ.METER</b>

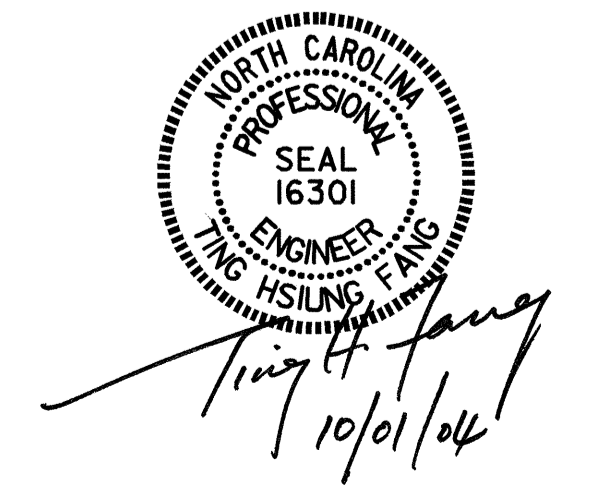
SUPERSTRUCTURE BILL OF MATERIAL			
	CLASS AA CONCRETE	REINFORCING STEEL	EPOXY COATED REINFORCING STEEL
	(CU.METER)	(kg)	(kg)
SPAN A-D	631.3	39,596	40,713
<b>TOTALS**</b>	<b>631.3</b>	<b>39,596</b>	<b>40,713</b>

\*\* QUANTITIES FOR BARRIER RAIL ARE NOT INCLUDED



LAYOUT FOR COMPUTING AREA OF REINFORCED CONCRETE DECK SLAB  
( SQ. METER = 2353.4 )

BAR SIZE	SUPERSTRUCTURE EXCEPT APPROACH SLABS, PARAPET, AND BARRIER RAIL				PARAPET AND BARRIER RAIL
	EPOXY COATED	UNCOATED	EPOXY COATED	UNCOATED	
#13	610	540	610	540	840
#16	770	660	770	660	1050
#19	920	790	1190	790	1330
#22	1580	1060			
#25	2080	1390			



PROJECT NO. R-513A  
ROBESON COUNTY  
STATION: 18+64.065 -L-

STATE OF NORTH CAROLINA  
DEPARTMENT OF TRANSPORTATION  
RALEIGH  
**SUPERSTRUCTURE  
BILL OF MATERIAL**

ASSEMBLED BY : T.A. WALTER DATE : 11/22/02  
CHECKED BY : N.Q. TRAN DATE : 7/03  
DRAWN BY : JMB 5/87 REV. 5/16/97 EEM/RGW  
CHECKED BY : SJD 9/87

REVISIONS						SHEET NO. S-22
NO.	BY:	DATE:	NO.	BY:	DATE:	
1			3			TOTAL SHEETS 172
2			4			