

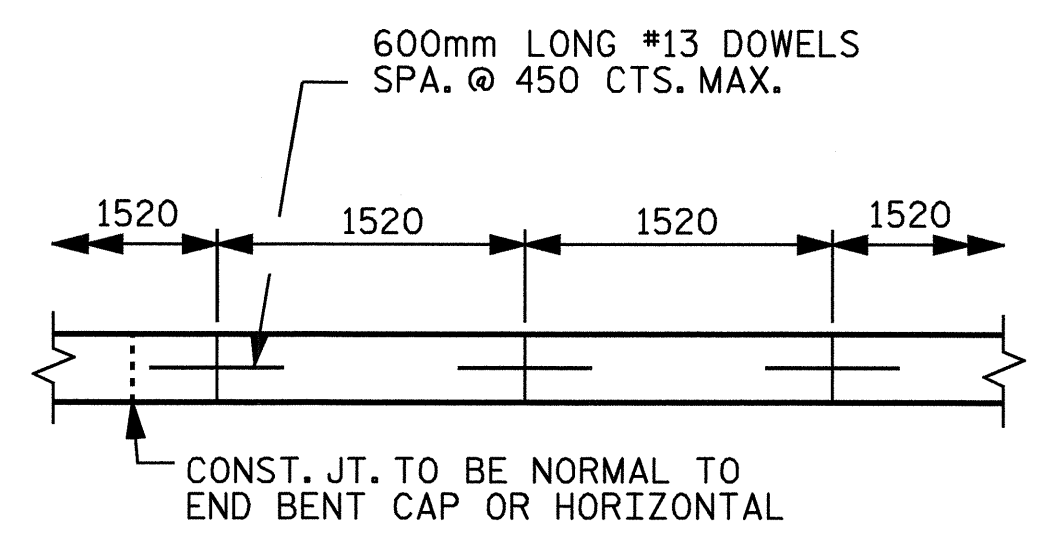
SECTION ALONG C ROADWAY WHEN FILL CATCHES IN DITCH

GENERAL NOTES

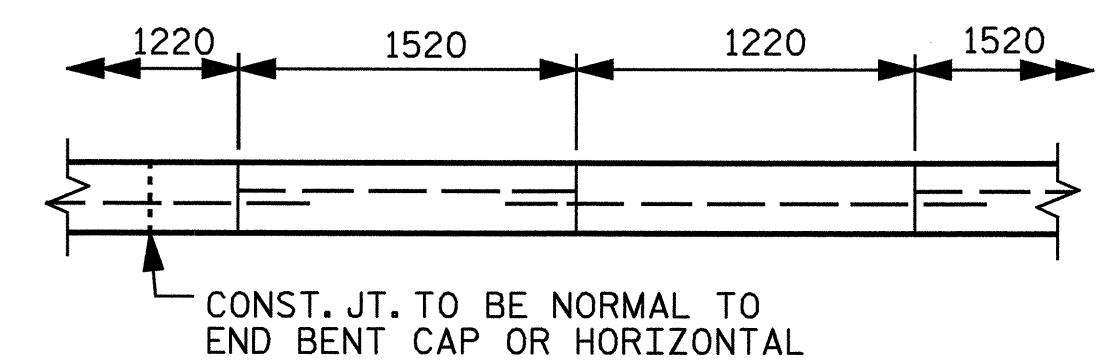
SLOPE PROTECTION SHALL BE PLACED UNDER THE ENDS OF THE BRIDGE AS SHOWN IN THE DETAILS. METHOD OF MEASUREMENT AND BASIS OF PAYMENT SHALL BE AS PRESCRIBED IN SECTION 462 OF THE STANDARD SPECIFICATIONS.

ALTERNATE "A"

ALTERNATE "A" SHALL CONSIST OF 100mm Poured-in-place concrete paving as shown in the details on this sheet. Concrete shall be class "B". The concrete surface shall be floated with a wooden float and finished. Welded wire fabric reinforcing shall be 152 x 152 - W9.1 x W9.1, 1520mm wide. Slope protection shall be poured in 1520mm strips as shown in the "Pouring Detail" with 600mm long #13 bars placed along the slope between strips at 450mm maximum spacing. Slope protection may be poured in alternate 1220mm and 1520mm strips as shown in the "Optional Pouring Detail" with adjacent runs of welded wire fabric lapping at least 152mm. The cost of the welded wire fabric and #13 bars, if used, shall be included in the contract unit price bid per square meter for slope protection.



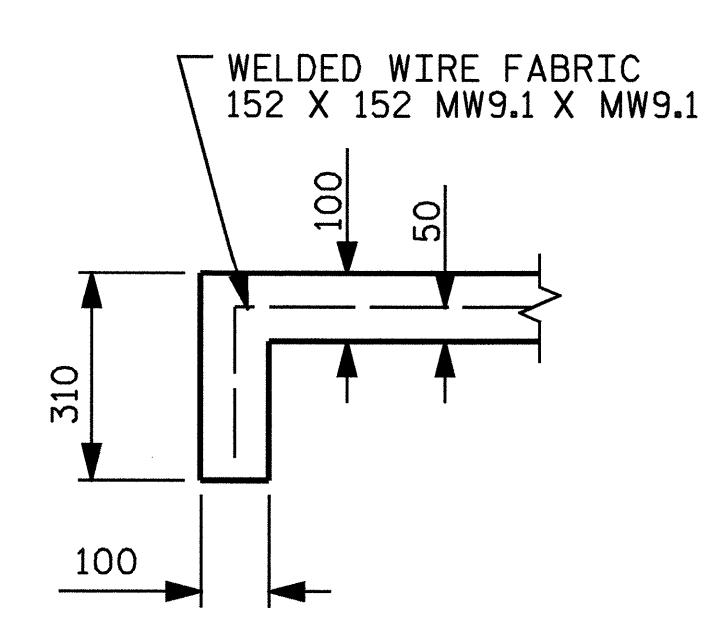
POURING DETAIL



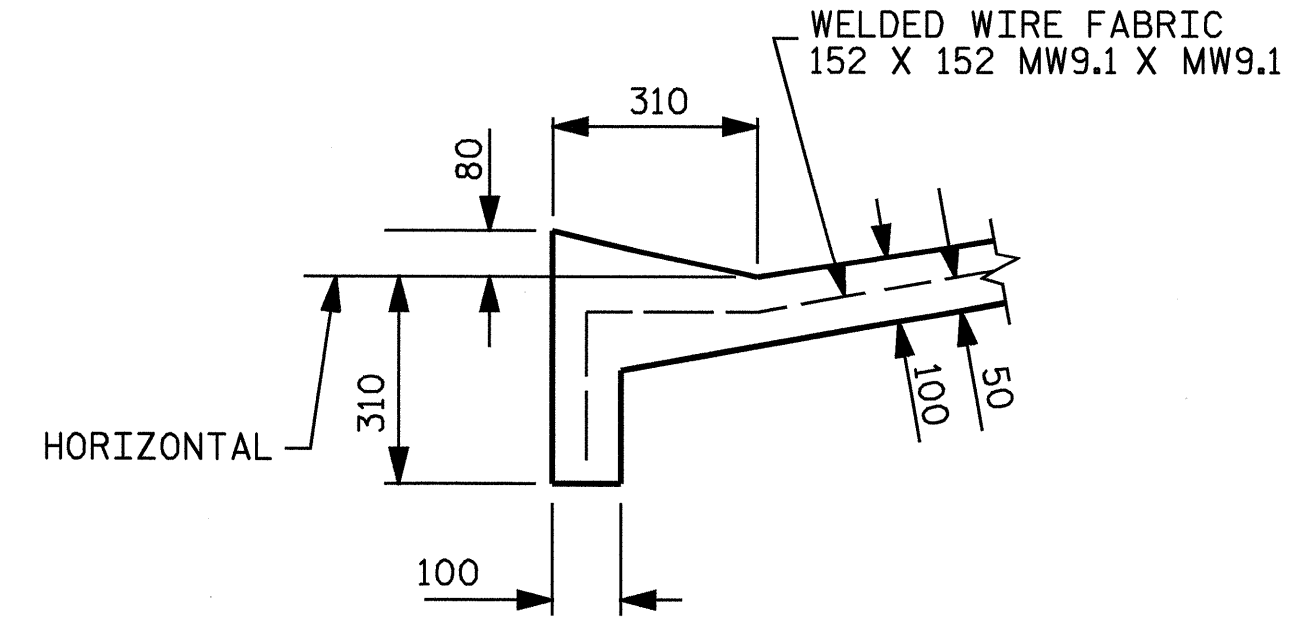
OPTIONAL POURING DETAIL

BRIDGE @ STA.	100mm SLOPE PROTECTION SQUARE METERS		* WELDED WIRE FABRIC 1520mm WIDE
	END BENT 1	END BENT 2	APPROX. METERS
18+64.065 -L- 17+01.791 -Y1-	510	480	730

* QUANTITY SHOWN IS BASED ON 1520mm POURS.



SECTION A-A



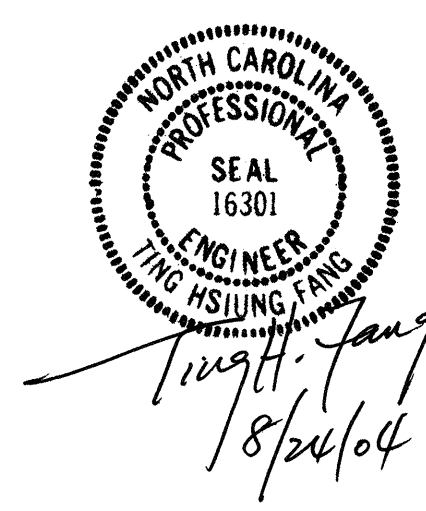
SECTION B-B

DRAWN BY : S. M. RASHIDI DATE : 5/22/03
CHECKED BY : J. L. WALTON DATE : 7/24/03

PROJECT NO. R-513A
ROBESON COUNTY
STATION: 18+64.065 -L-

SHEET 2 OF 2

STATE OF NORTH CAROLINA
DEPARTMENT OF TRANSPORTATION
RALEIGH
STANDARD
SLOPE PROTECTION
DETAILS



REVISIONS						SHEET NO.
NO.	BY:	DATE:	NO.	BY:	DATE:	
1			3			5-32
2			4			TOTAL SHEETS 172