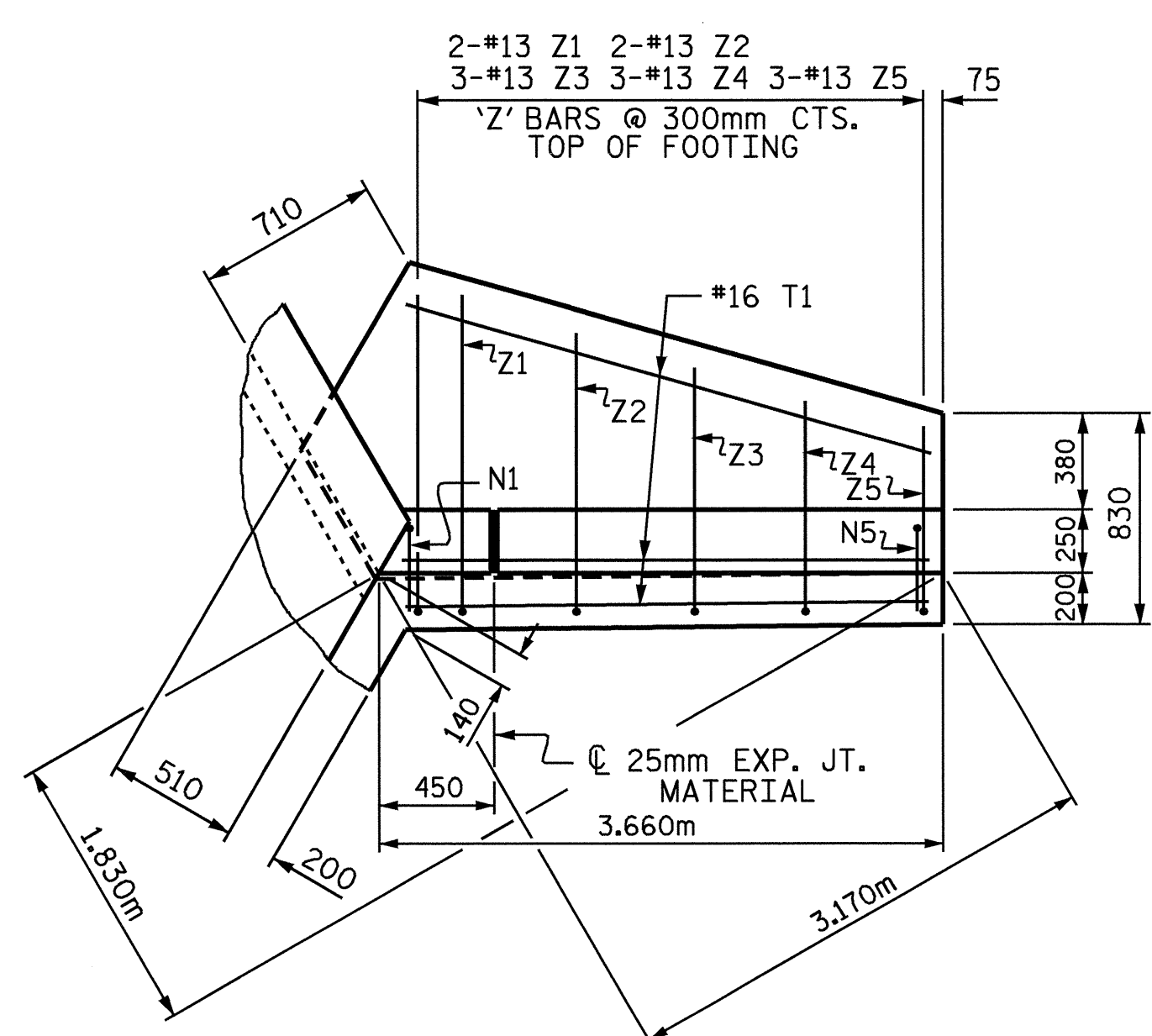
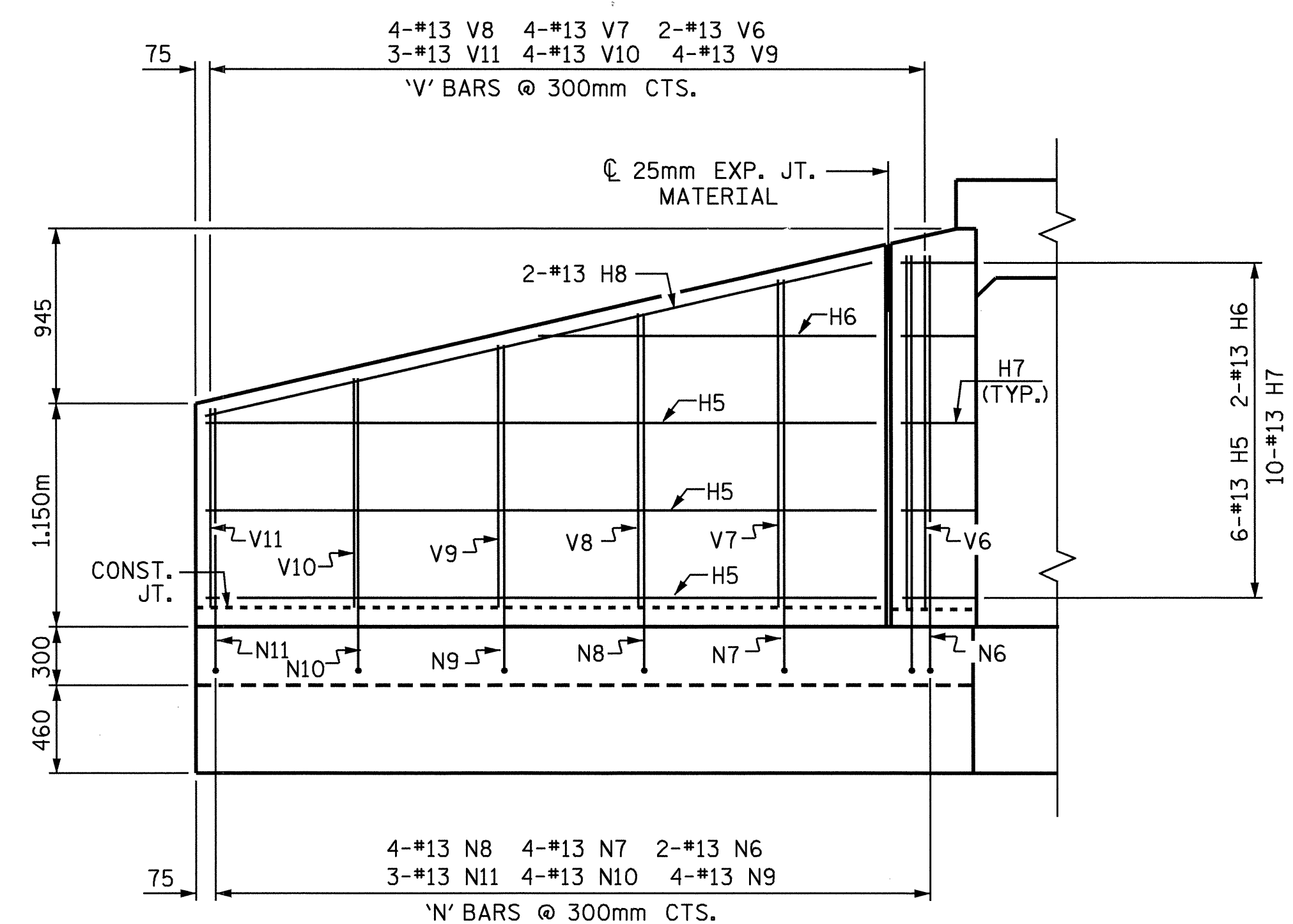


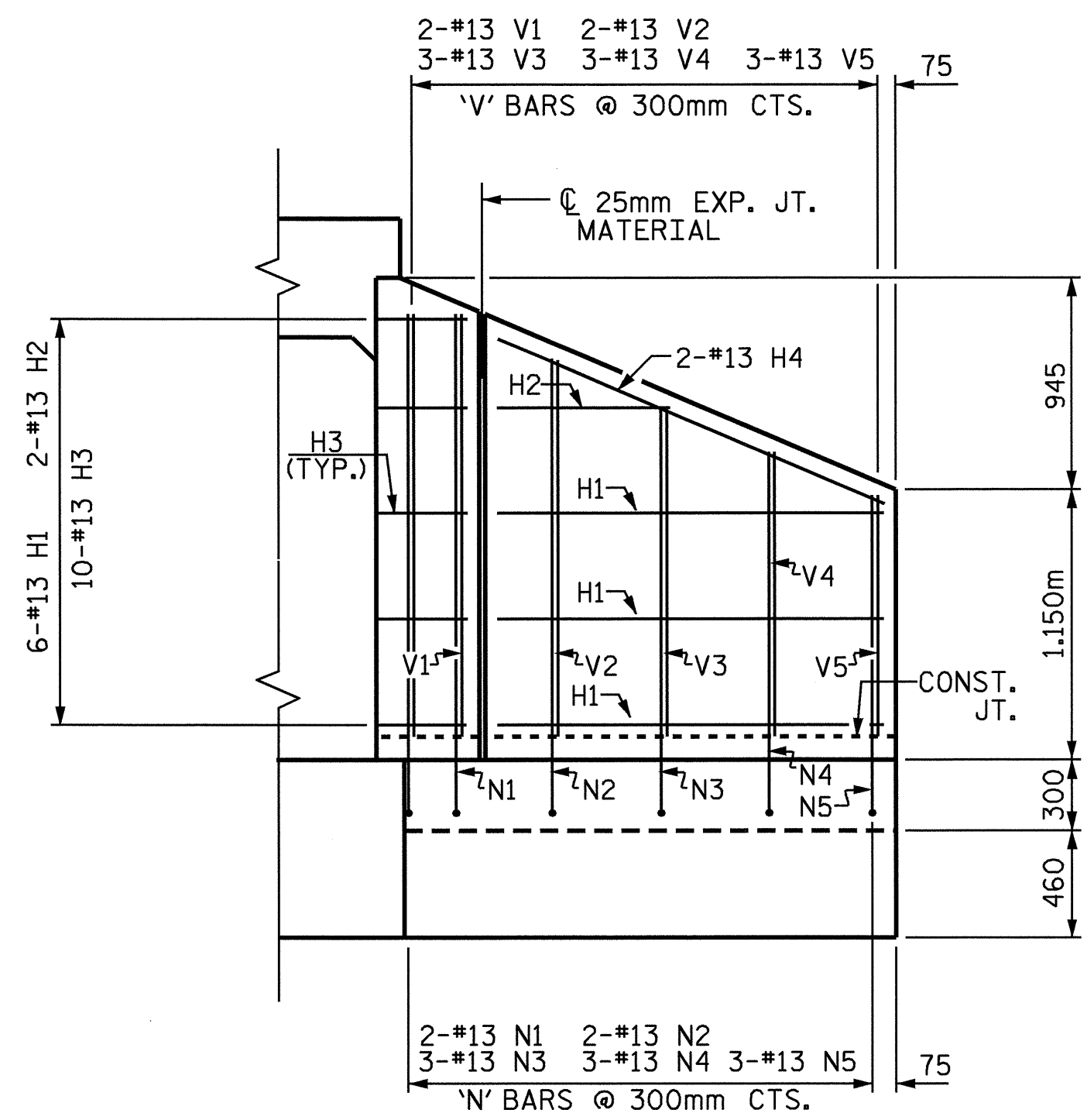
PLAN W1



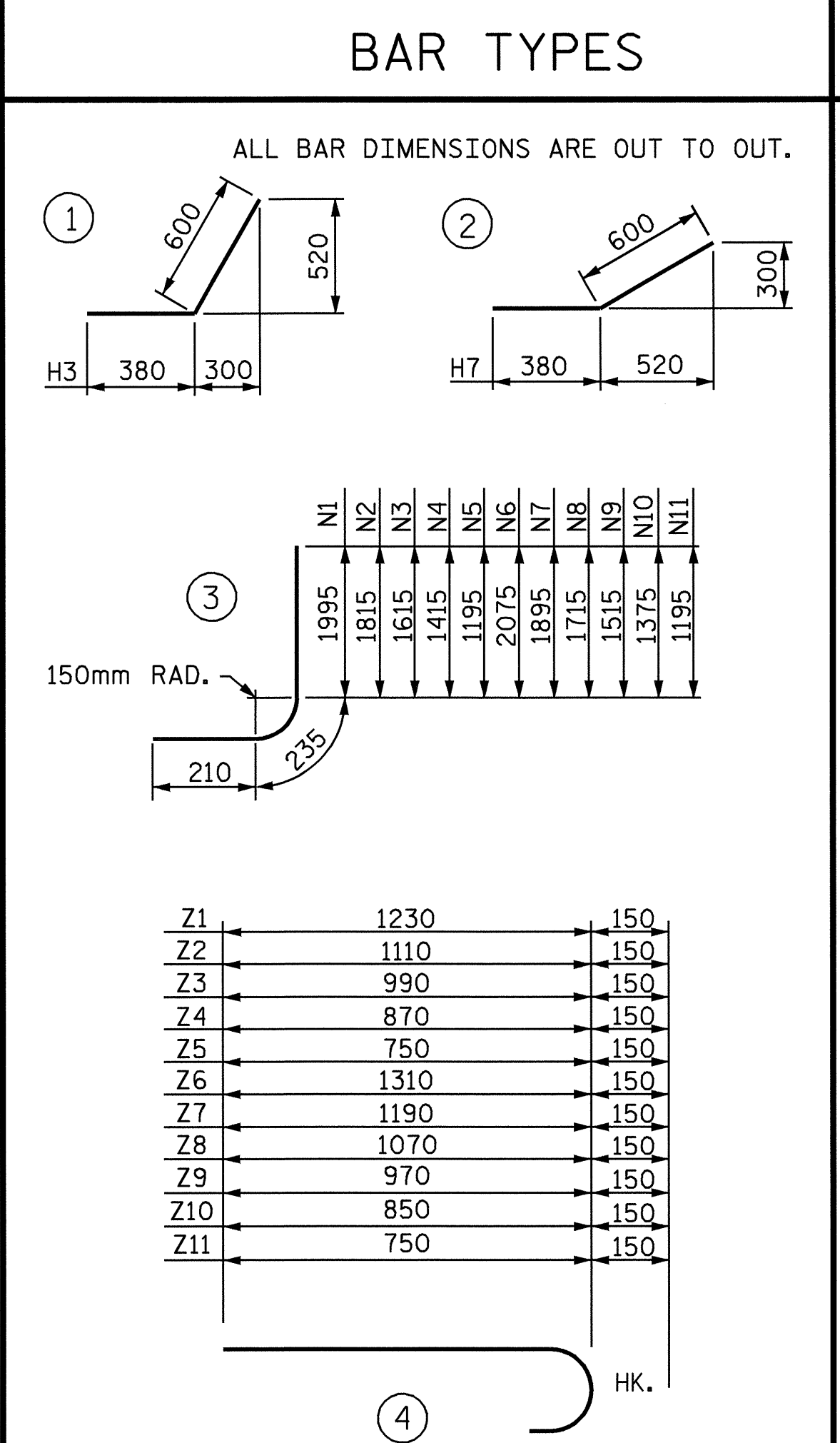
PLAN W2



ELEVATION W1



ELEVATION W2



BILL OF MATERIAL

BAR NO.	SIZE	TYPE	LENGTH	WEIGHT	
H1	6	13	STR	3080	18
H2	2	13	STR	1460	3
H3	10	13	1	980	10
H4	2	13	STR	3180	6
H5	6	13	STR	5840	35
H6	2	13	STR	3280	7
H7	10	13	2	980	10
H8	2	13	STR	5940	12
N1	2	13	3	2440	5
N2	2	13	3	2260	5
N3	2	13	3	2060	5
N4	2	13	3	1860	5
N5	2	13	3	1640	5
N6	2	13	3	2520	5
N7	4	13	3	2340	9
N8	4	13	3	2160	9
N9	4	13	3	1980	8
N10	4	13	3	1820	7
N11	3	13	3	1640	5
T1	3	16	STR	3660	17
T2	3	16	STR	6420	30
V1	2	13	STR	1820	4
V2	2	13	STR	1620	3
V3	2	13	STR	1420	3
V4	3	13	STR	1220	4
V5	3	13	STR	1020	3
V6	2	13	STR	1900	4
V7	4	13	STR	1720	7
V8	4	13	STR	1540	6
V9	4	13	STR	1360	5
V10	4	13	STR	1180	5
V11	3	13	STR	1020	3
Z1	2	13	4	1380	3
Z2	2	13	4	1260	3
Z3	2	13	4	1140	3
Z4	3	13	4	1020	3
Z5	3	13	4	900	3
Z6	2	13	4	1460	5
Z7	4	13	4	1340	5
Z8	4	13	4	1220	5
Z9	4	13	4	1120	4
Z10	4	13	4	1000	4
Z11	3	13	4	900	3

REINFORCING STEEL FOR 2 WING WALLS 303 kg

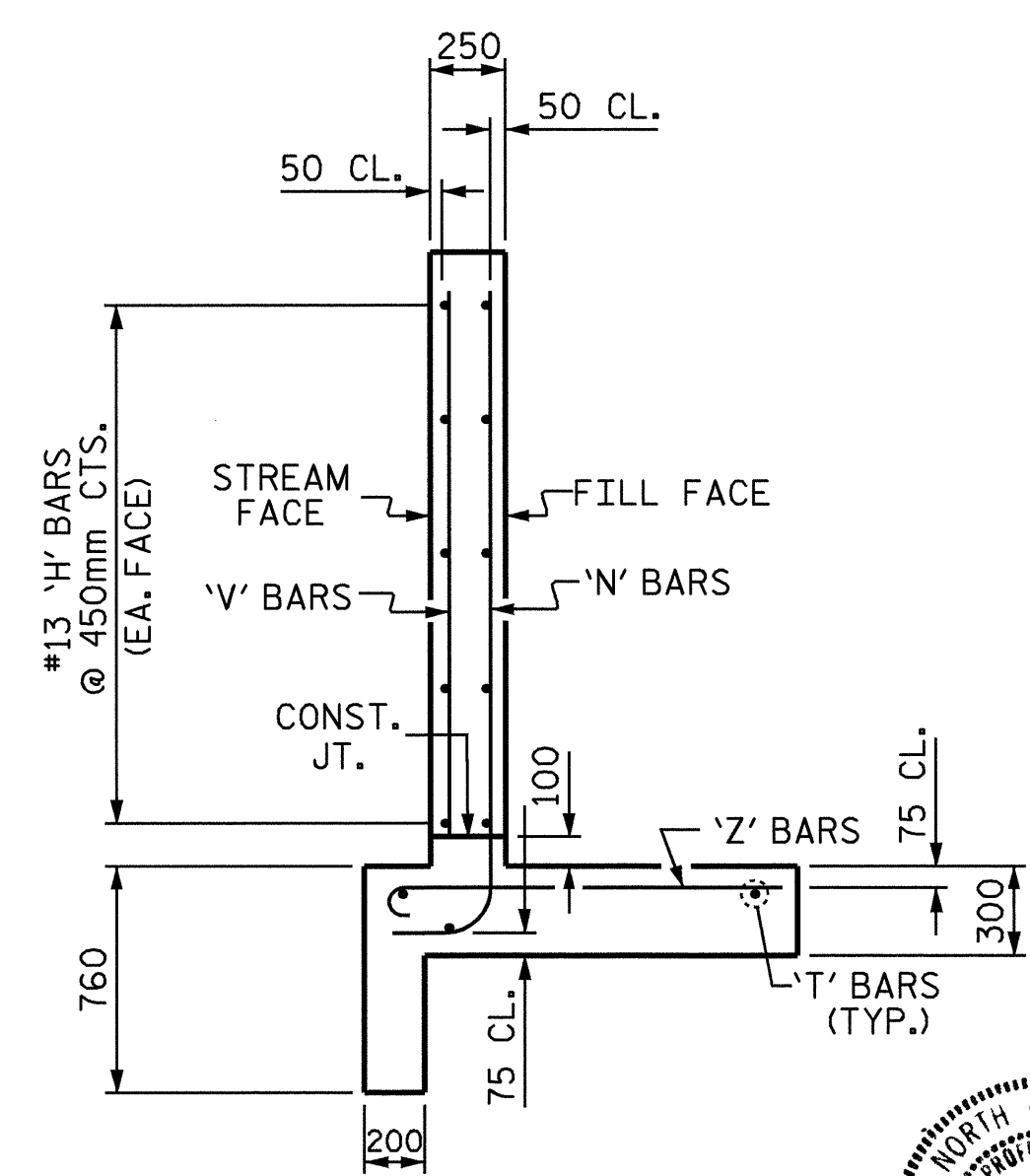
CLASS A CONCRETE

2 WINGS 9.1 m³

1 HEADWALL 0.7 m³

1 END CURTAIN WALLS 1.0 m³

TOTAL 10.8 m³



TYPICAL WING SECTION

PROJECT NO. R-513BA

ROBESON COUNTY

STATION: 12+86.500 -SR1-

SHEET 5 OF 5

STATE OF NORTH CAROLINA
DEPARTMENT OF TRANSPORTATION
RALEIGH

WINGS FOR INLET END
CONCRETE BOX CULVERT
H = 1.800m SLOPE 3:1
120° FOR INLET WING

1994

REVISIONS						SHEET NO.	
NO.	BY:	DATE:	NO.	BY:	DATE:	TOTAL SHEETS	
1			3			C-19	
2			4			24	

ASSEMBLED BY : N. Q. TRAN DATE : 2-13-03
CHECKED BY : SWANCEPE DATE : 08-04-04

DRAWN BY : JLR 6/97
CHECKED BY : VAP 6/97