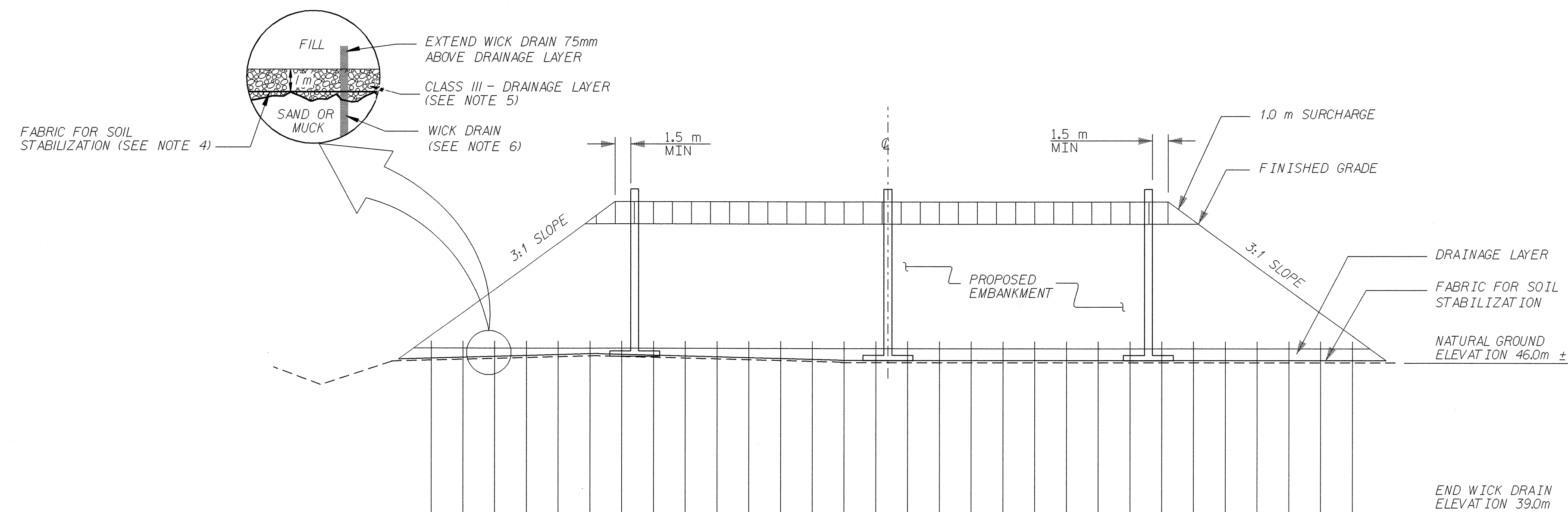


PROJ. REFERENCE NO.	SHEET NO.	TOTAL SHEETS
R-0513BA		2 - 2
STATE PROJ. NO.	F.A. PROJ. NO.	DESCRIPTION



TYPICAL CROSS SECTION OF EMBANKMENT

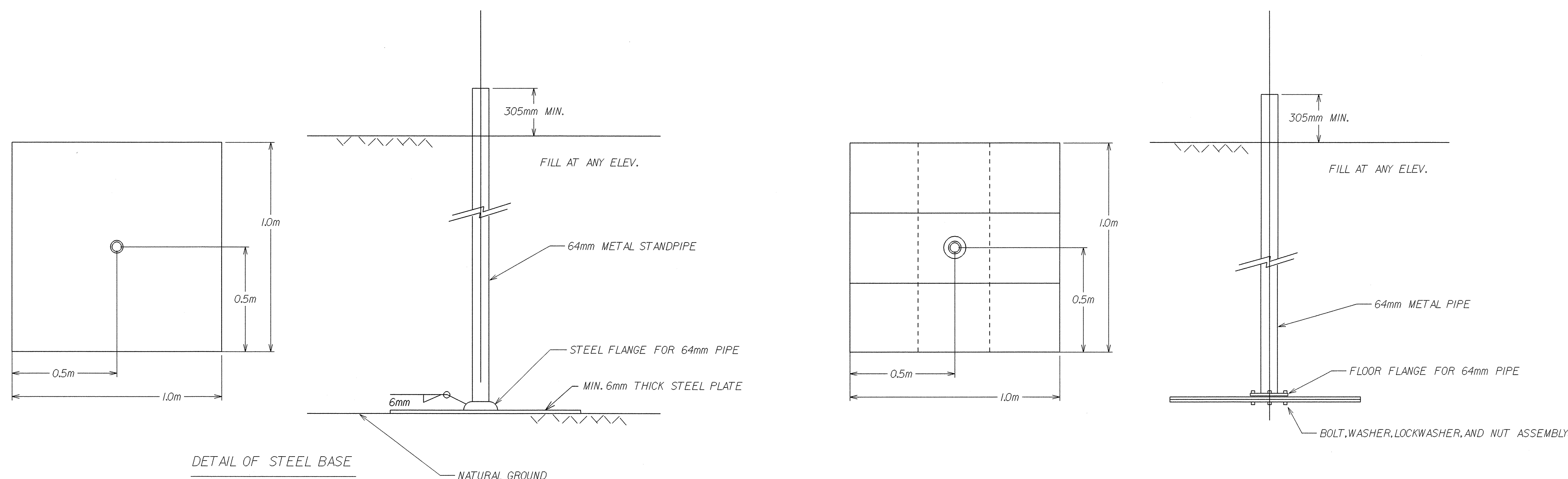
NOT TO SCALE

NOTES:

1. THE USE OF EITHER THE WOOD BASE OR THE STEEL BASE SETTLEMENT GAUGE SHALL BE THE CONTRACTOR'S OPTION.
2. SETTLEMENT GAUGES SHALL BE INSTALLED BEFORE ANY FILL IS PLACED.
3. SETTLEMENT GAUGE ELEVATIONS ARE TO BE DETERMINED AND RECORDED BIWEEKLY BY THE RESIDENT ENGINEER. THE INITIAL ELEVATION OF THE SETTLEMENT GAUGE PLATE (AT TOP OF PLATE) SHALL BE DETERMINED AT THE TIME OF INSTALLATION ALONG WITH THE EMBANKMENT ELEVATION. WHEN THE NEW SECTIONS OF PIPE ARE ADDED, ELEVATIONS SHALL BE RECORDED AT THE TOP OF EXISTING PIPE AND AT THE TOP OF THE NEW PIPE. THIS IS TO TAKE INTO ACCOUNT INTERIM SETTLEMENT. VARIABLE PIPE LENGTHS AND THREAD LENGTHS IN COUPLING. RESULTS OF SETTLEMENT GAUGE READINGS SHALL BE FORWARDED TO NCDOT GEOTECHNICAL ENGINEERING UNIT EASTERN REGIONAL OFFICE WITHIN THREE DAYS.
4. FABRIC FOR SOIL STABILIZATION SHALL BE PLACED WITH THE MACHINE DIRECTION PARALLEL TO THE EMBANKMENT CENTERLINE.
5. THE LAYER OF CLASS III SELECT BACKFILL SHALL BE INSTALLED IN A 1m THICK LIFT ON TOP OF THE FABRIC FOR SOIL STABILIZATION. THE CLASS III SELECT MATERIAL SHALL BE USED AS DIRECTED BY THE ENGINEER TO PROVIDE A WORKING SURFACE.
6. PRE-AUGERING MAY BE REQUIRED TO INSTALL THE WICK DRAINS TO THE ELEVATION SPECIFIED IN THESE PLANS OR AS DIRECTED BY THE ENGINEER. IF AUGERING IS NECESSARY, THEN THE COST OF AUGERING IS INCIDENTAL TO THE COST OF THE WICK DRAINS. SEE SPECIAL PROVISIONS FOR INSTALLATION OF WICK DRAINS.

ESTIMATED QUANTITIES

BORROW EXCAVATION (FOR SURCHARGE)	3,600 CU.M.
UNCLASSIFIED EXCAVATION (FOR SURCHARGE)	2,900 CU.M.
EMBANKMENT SETTLEMENT GAUGES	8 EA.
WICK DRAINS	44,000 LN.M.
SELECT MATERIAL, CLASS III	11,000 CU.M.
FABRIC FOR SOIL STABILIZATION	11,000 SQ.M.



SETTLEMENT GAUGE DETAIL

NOT TO SCALE

SIX - 0.025m X 0.3m X 1.0m PLANKS OF LUMBER OR TWO PIECES 0.025m X 1.0m X 1.0m EXTERIOR GRADE PLYWOOD, SECURELY FASTENED AND THEN COATED WITH WOOD PRESERVATIVE.

PROJECT 343361.2 R-0513BA
ROBESON COUNTY
STATION SEE PLANS

STATE OF NORTH CAROLINA
DEPARTMENT OF TRANSPORTATION
RALEIGH

DETAILS FOR
EMBANKMENT
CONSTRUCTION

DRAWN BY ADS DATE 07/04
CHECKED BY CAG DATE 07/04