

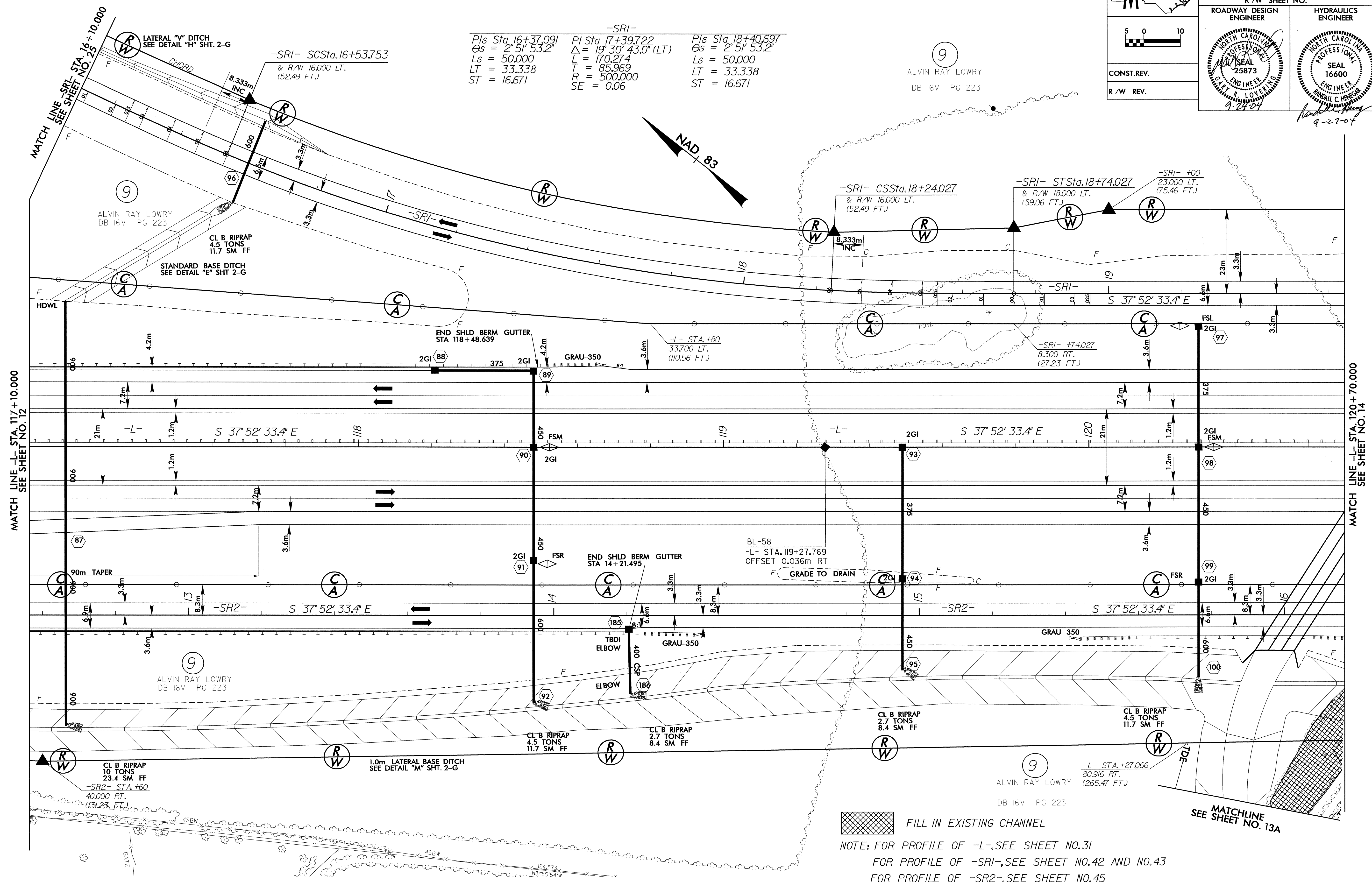
8/17/93

PROJECT REFERENCE NO. R-0513BA		SHEET NO. 13
R/W SHEET NO.		
ROADWAY DESIGN ENGINEER	HYDRAULICS ENGINEER	
CONST. REV.		
R/W REV.		

-SRI-

PIs Sta. 16+37.091	PI Sta. 17+39.722	PIs Sta. 18+40.697
$\theta_s = 2^\circ 51' 53.2''$	$\Delta = 19^\circ 30' 43.0''$ (LT)	$\theta_s = 2^\circ 51' 53.2''$
$L_s = 50.000$	$L = 170.274$	$L_s = 50.000$
$LT = 33.338$	$T = 85.969$	$LT = 33.338$
$ST = 16.671$	$R = 500.000$	$LT = 33.338$
	$SE = 0.06$	$ST = 16.671$

9
ALVIN RAY LOWRY
DB 16V PG 223



FILL IN EXISTING CHANNEL

NOTE: FOR PROFILE OF -L-, SEE SHEET NO.31
 FOR PROFILE OF -SRI-, SEE SHEET NO.42 AND NO.43
 FOR PROFILE OF -SR2-, SEE SHEET NO.45
 FOR CULVERT PLANS AND CHANNEL RELOCATION SEE SHEET C - C

20-SEP-2004 13:43
 R:\PROJECTS\0513BA\DWG\13.dwg
 Author: AT 110818337