



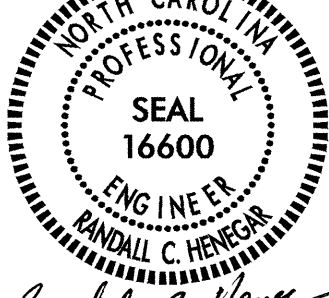
CONST. REV.  
R/W REV.

PROJECT REFERENCE NO. R-0513BA SHEET NO. 19

R/W SHEET NO.

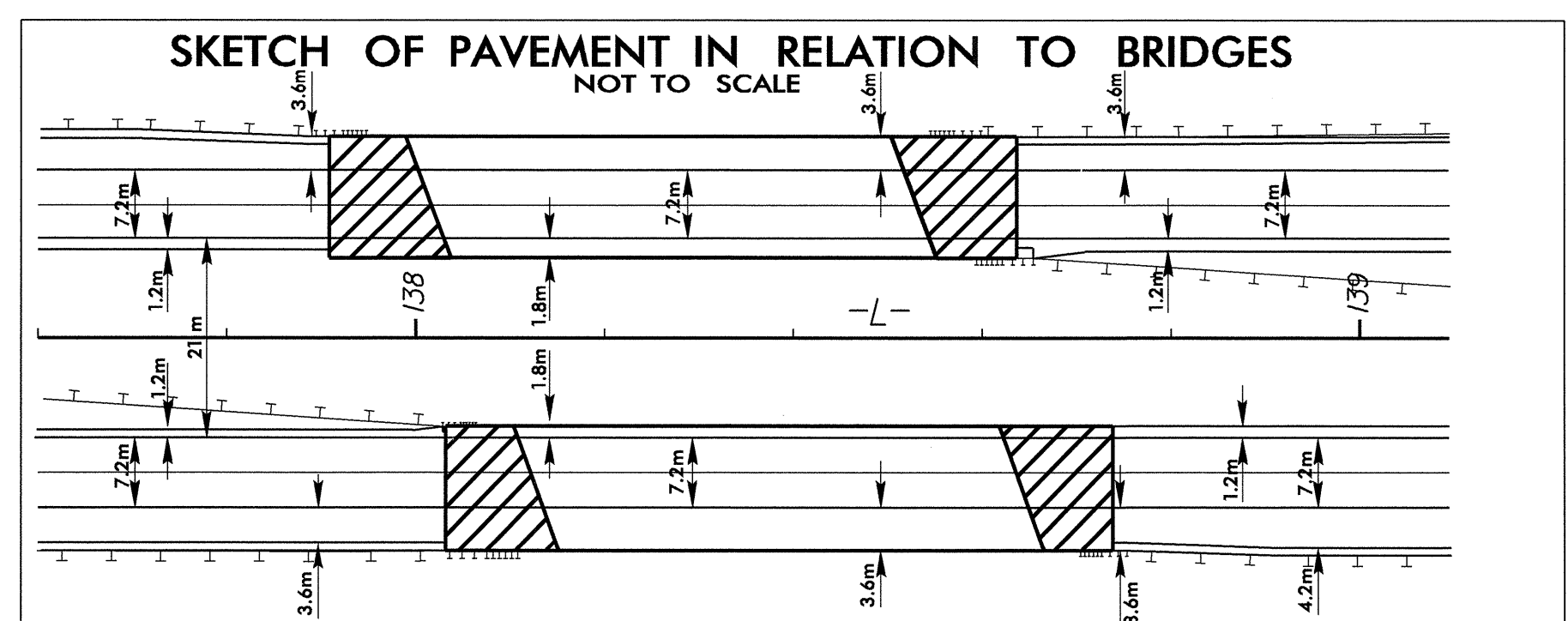
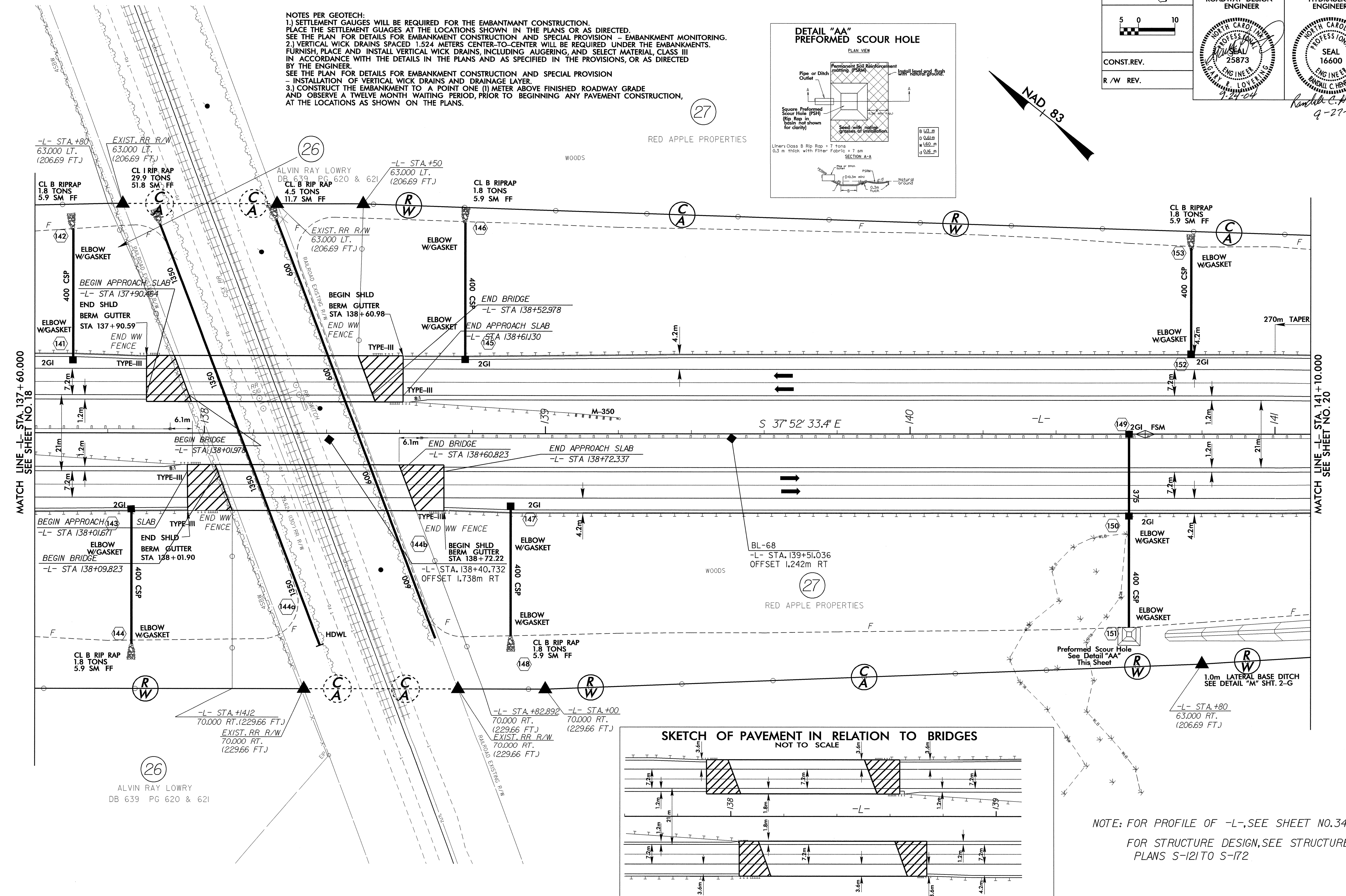
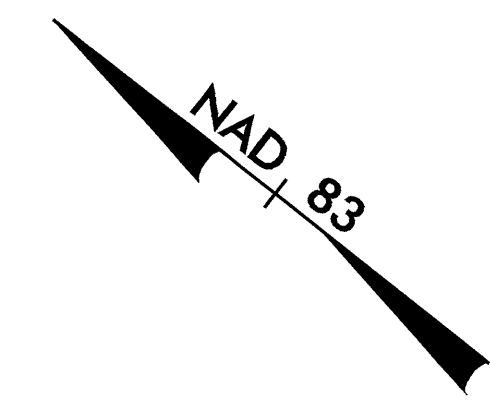
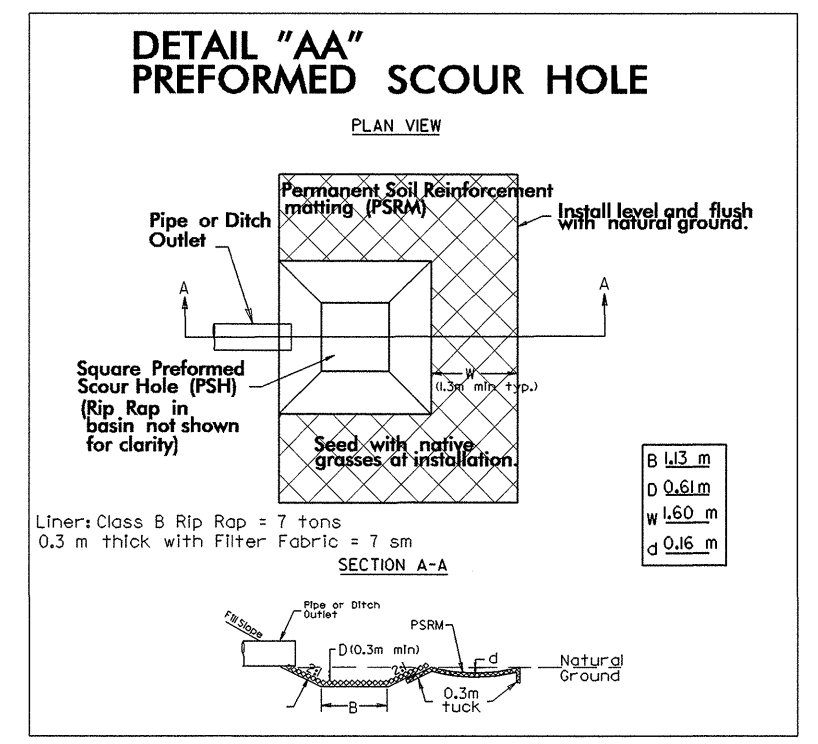
ROADWAY DESIGN ENGINEER

HYDRAULICS ENGINEER



9-27-04

**NOTES PER GEOTECH:**  
 1.) SETTLEMENT GAUGES WILL BE REQUIRED FOR THE EMBANKMENT CONSTRUCTION. PLACE THE SETTLEMENT GAUGES AT THE LOCATIONS SHOWN IN THE PLANS OR AS DIRECTED. SEE THE PLAN FOR DETAILS FOR EMBANKMENT CONSTRUCTION AND SPECIAL PROVISION - EMBANKMENT MONITORING.  
 2.) VERTICAL WICK DRAINS SPACED 1.524 METERS CENTER-TO-CENTER WILL BE REQUIRED UNDER THE EMBANKMENTS. FURNISH, PLACE AND INSTALL VERTICAL WICK DRAINS, INCLUDING AUGERING, AND SELECT MATERIAL, CLASS III IN ACCORDANCE WITH THE DETAILS IN THE PLANS AND AS SPECIFIED IN THE PROVISIONS, OR AS DIRECTED BY THE ENGINEER.  
 SEE THE PLAN FOR DETAILS FOR EMBANKMENT CONSTRUCTION AND SPECIAL PROVISION  
 - INSTALLATION OF VERTICAL WICK DRAINS AND DRAINAGE LAYER.  
 3.) CONSTRUCT THE EMBANKMENT TO A POINT ONE (1) METER ABOVE FINISHED ROADWAY GRADE AND OBSERVE A TWELVE MONTH WAITING PERIOD, PRIOR TO BEGINNING ANY PAVEMENT CONSTRUCTION, AT THE LOCATIONS AS SHOWN ON THE PLANS.



NOTE: FOR PROFILE OF -L-, SEE SHEET NO. 34  
 FOR STRUCTURE DESIGN, SEE STRUCTURE PLANS S-121 TO S-172

9/17/04

83-SEP-2004 15:24  
mduval, rj  
adbb666e7